

REVISIONS	DATE	DESCRIPTION	APPROVED	DATE	DESCRIPTION
1	8/07/2005	ISSUED FOR FINAL WORK PLAN			
2	10/31/2003	ISSUED FOR BID			
3	10/17/2003	AMENDMENT			

DESIGNED BY: DATE: 08/04/2003	PROJECT NO: 6503	DRAWING CODE:	REVIEWED BY: SOLICITATION NUMBER:
DRAWN BY:	CHECKED BY:		

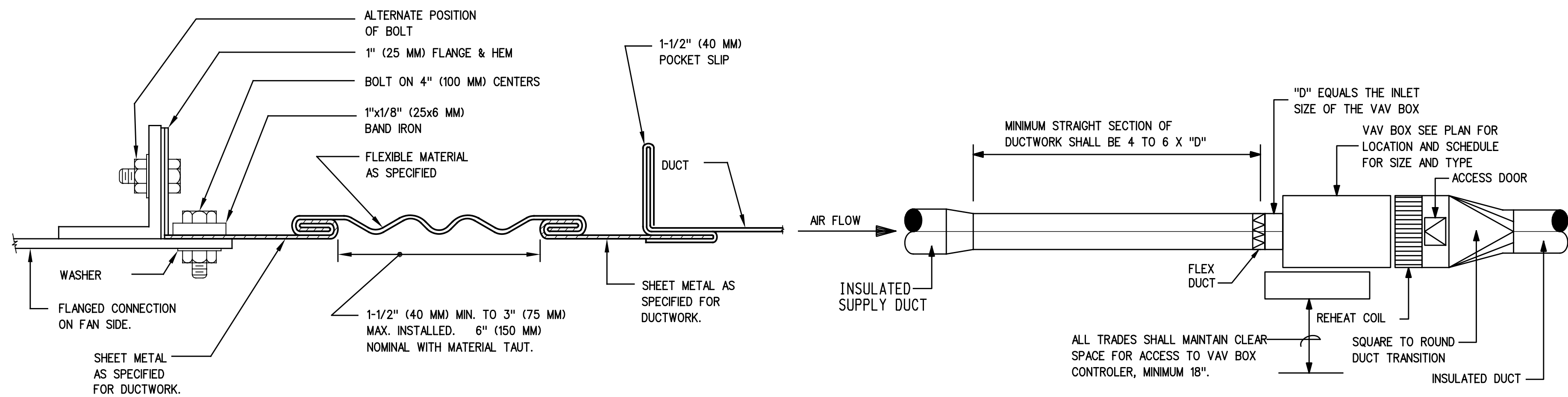
U.S. ARMY ENGINEERING AND SUPPORT CENTER
CORPS OF ENGINEERS
HUNTSVILLE, ALABAMA

EARTHTECH
2015 Huntsville, AL 35894-0001

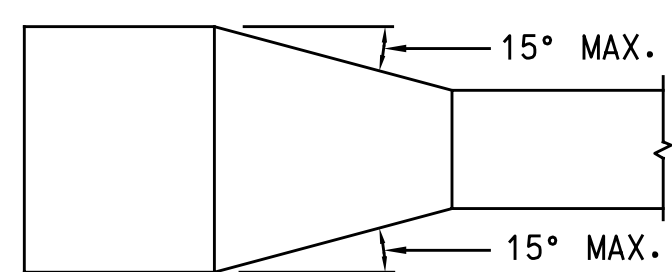
HLM
Huntsville, AL

RENOVATE CLINIC BUILDING 1090 LITTLE ROCK AFB, ARKANSAS	HVAC DETAILS AS-BUILT
---	--------------------------

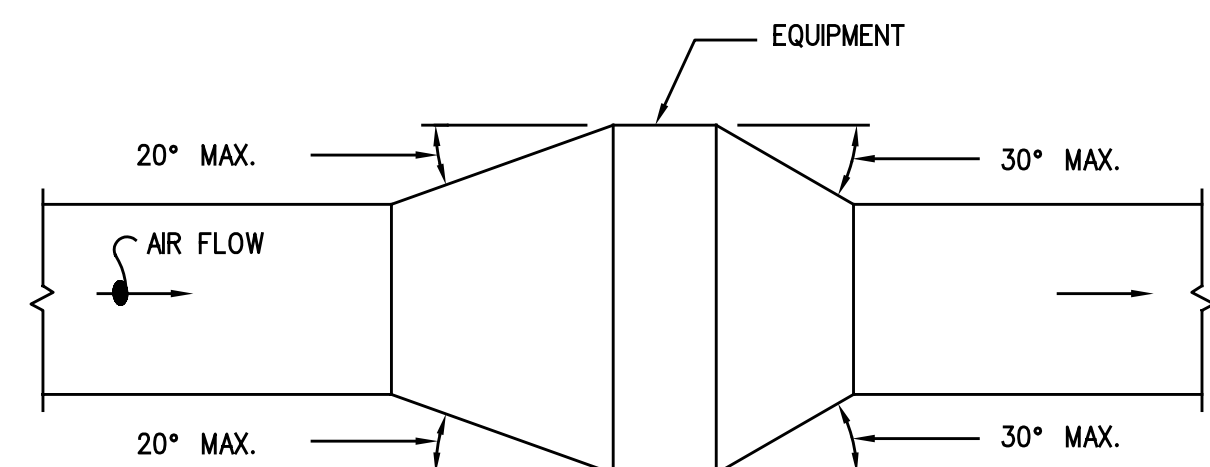
SHEET REFERENCE NUMBER: M4.12 SHEET X OF XX
--



8 RECTANGULAR FLEXIBLE CONNECTIONS
NOT TO SCALE

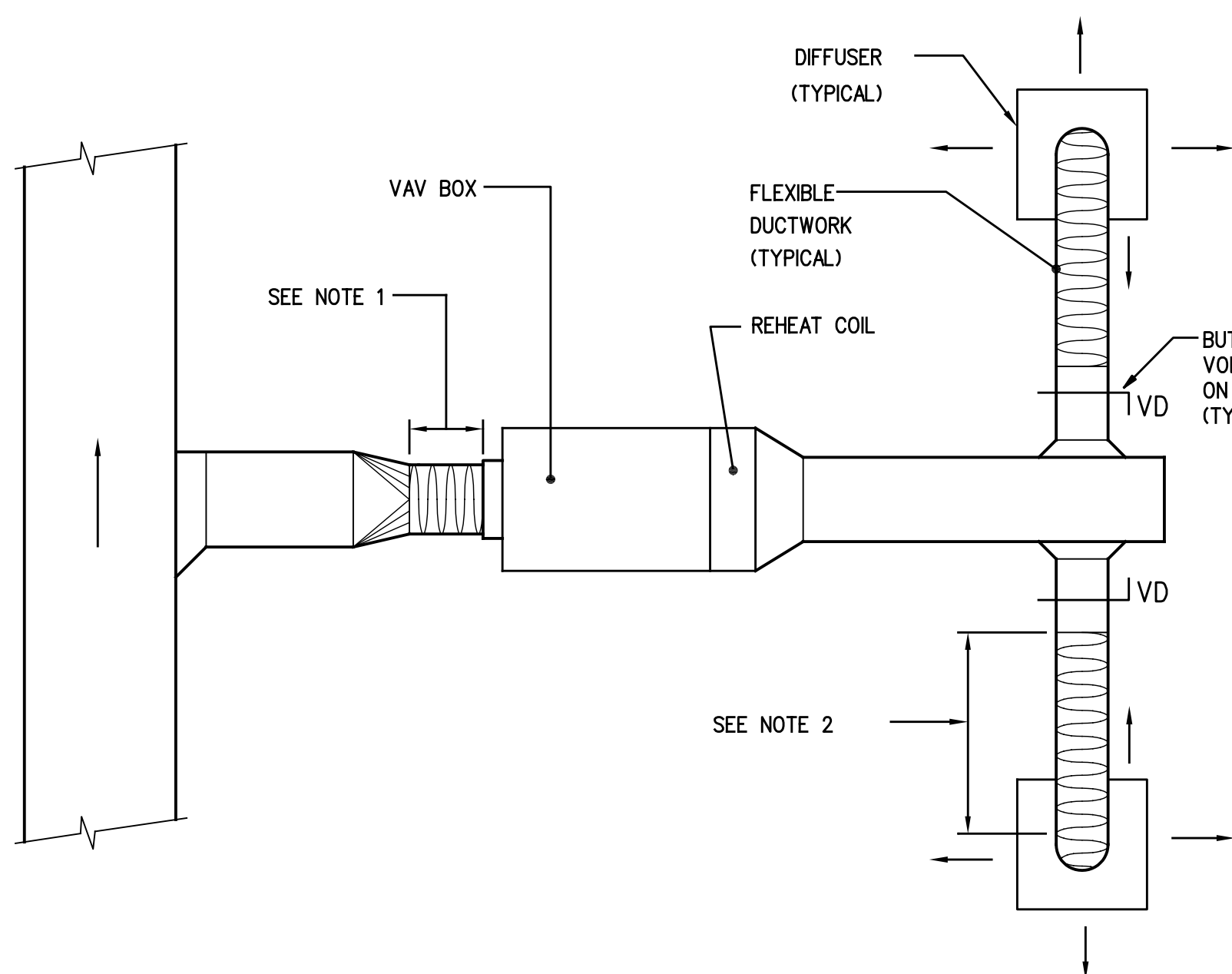


12 TYPICAL DUCTWORK TRANSITION



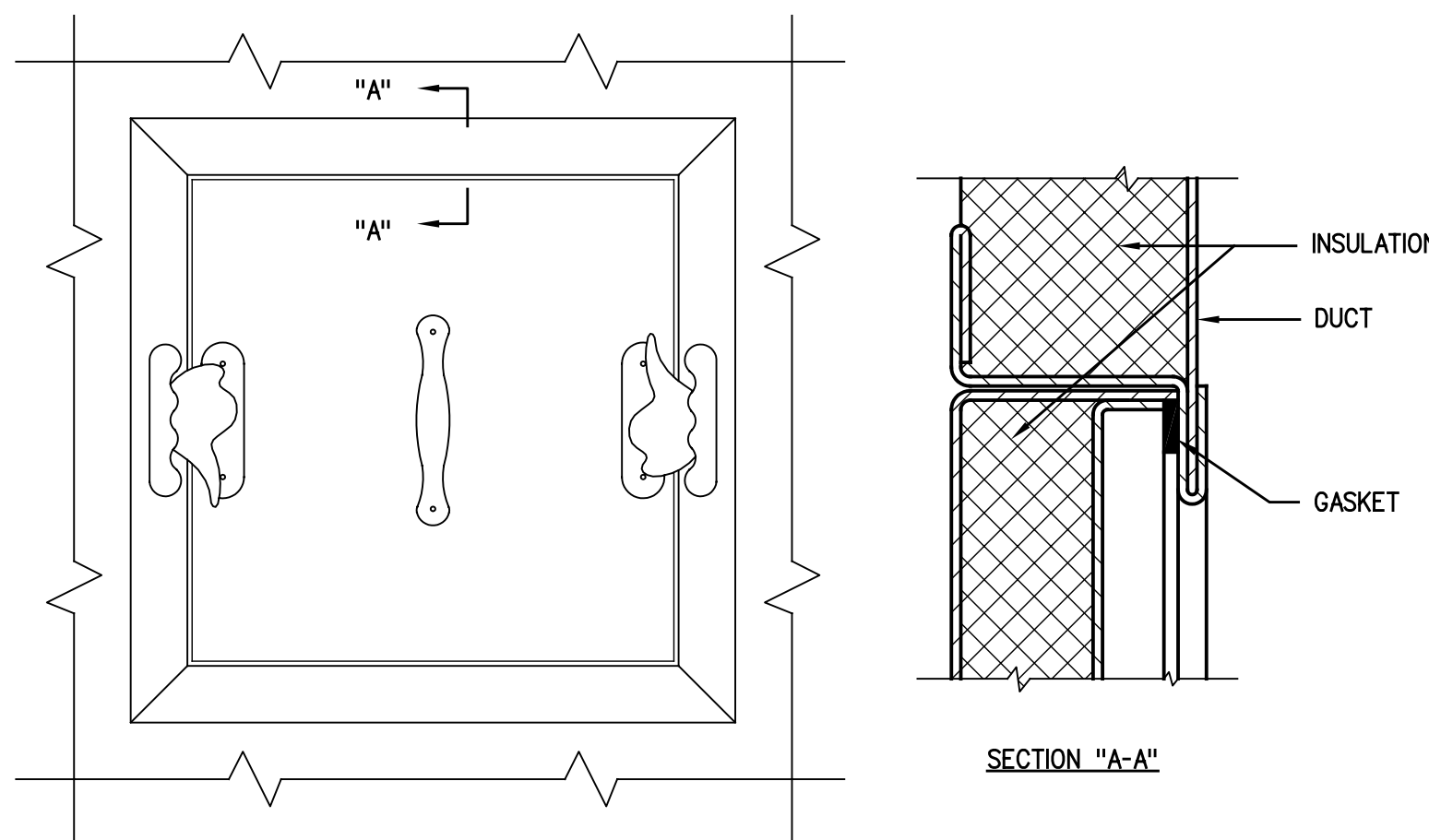
13 TYPICAL DUCTWORK TRANSITION WITH EQUIPMENT MOUNTED IN DUCT
NOT TO SCALE

9 TYPICAL VARIABLE VOLUME BOX WITH REHEAT COIL
NOT TO SCALE

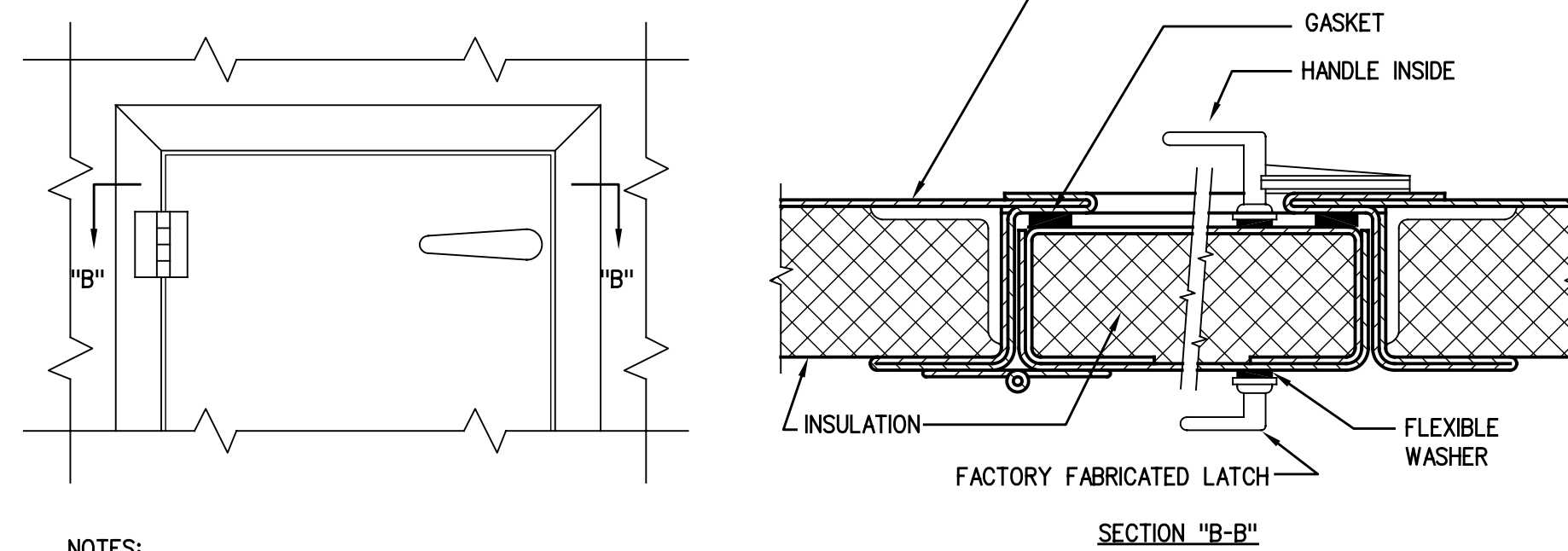


- NOTES:
1. FLEXIBLE DUCT CONNECTION OF 3'-0" (1.0 M) MAXIMUM LENGTH SHALL BE PROVIDED FOR AIR TERMINAL UNIT INLET DUCT CONNECTION.
 2. FLEXIBLE DUCT CONNECTION (WHEN USED) FROM TERMINAL UNIT SUPPLY AIR DUCT TO DIFFUSER SHALL NOT EXCEED 5'-0" (1.5 M)
 3. BENDS SHALL BE MADE WITH NOT LESS THAN ONE DUCT DIAMETER CENTER LINE RADIUS.

14 FLEXIBLE DUCT CONNECTION FOR VARIABLE VOLUME SYSTEMS
NOT TO SCALE

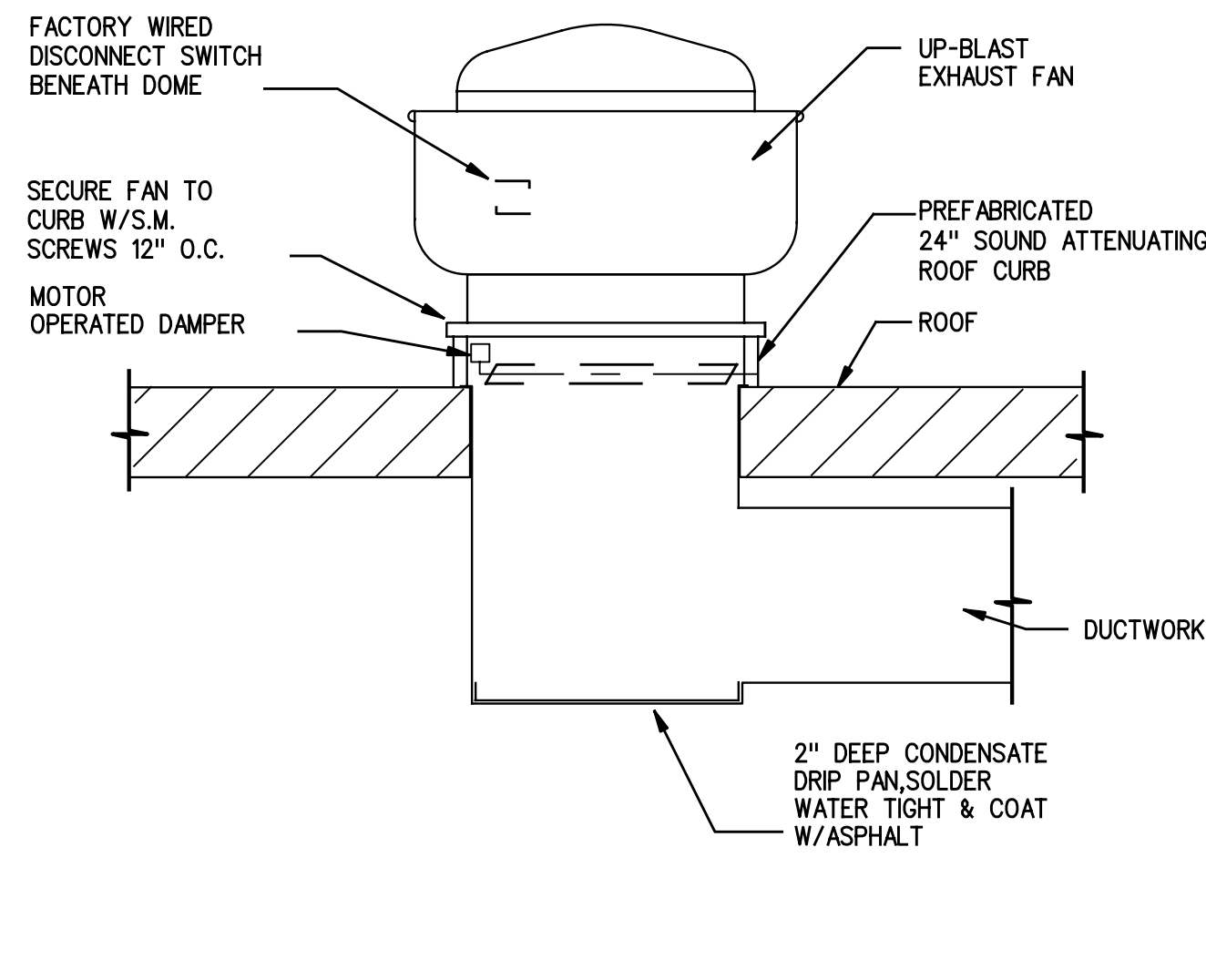


18 ACCESS PANEL
NOT TO SCALE

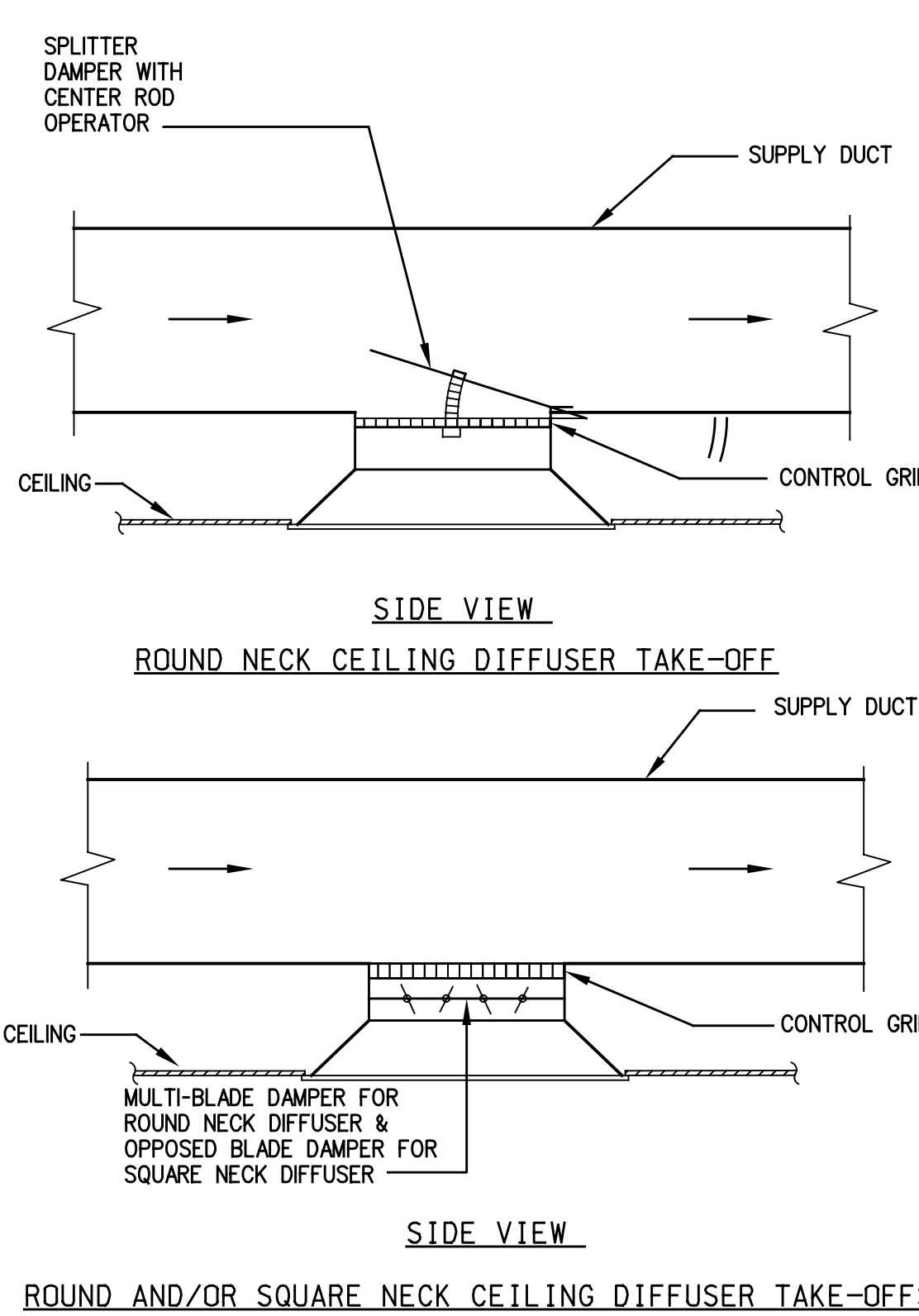


- NOTES:
1. LATCHES SHALL BE OF THE WEDGE TYPE TO CLOSE DOORS TIGHTLY.
 2. HINGES ON THE ACCESS DOORS SHALL HAVE NON-CORROSIVE PINS.

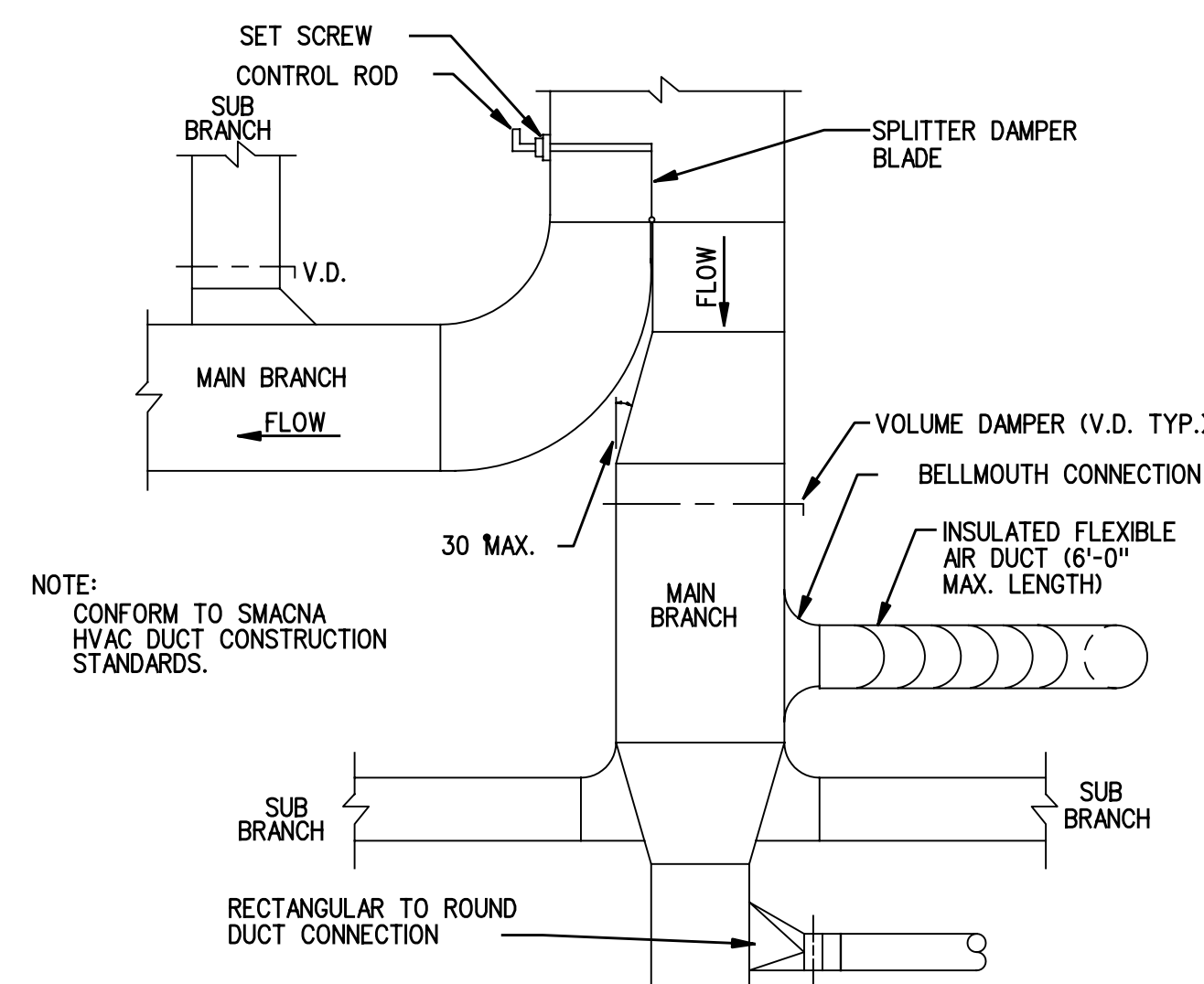
19 ACCESS DOOR
NOT TO SCALE



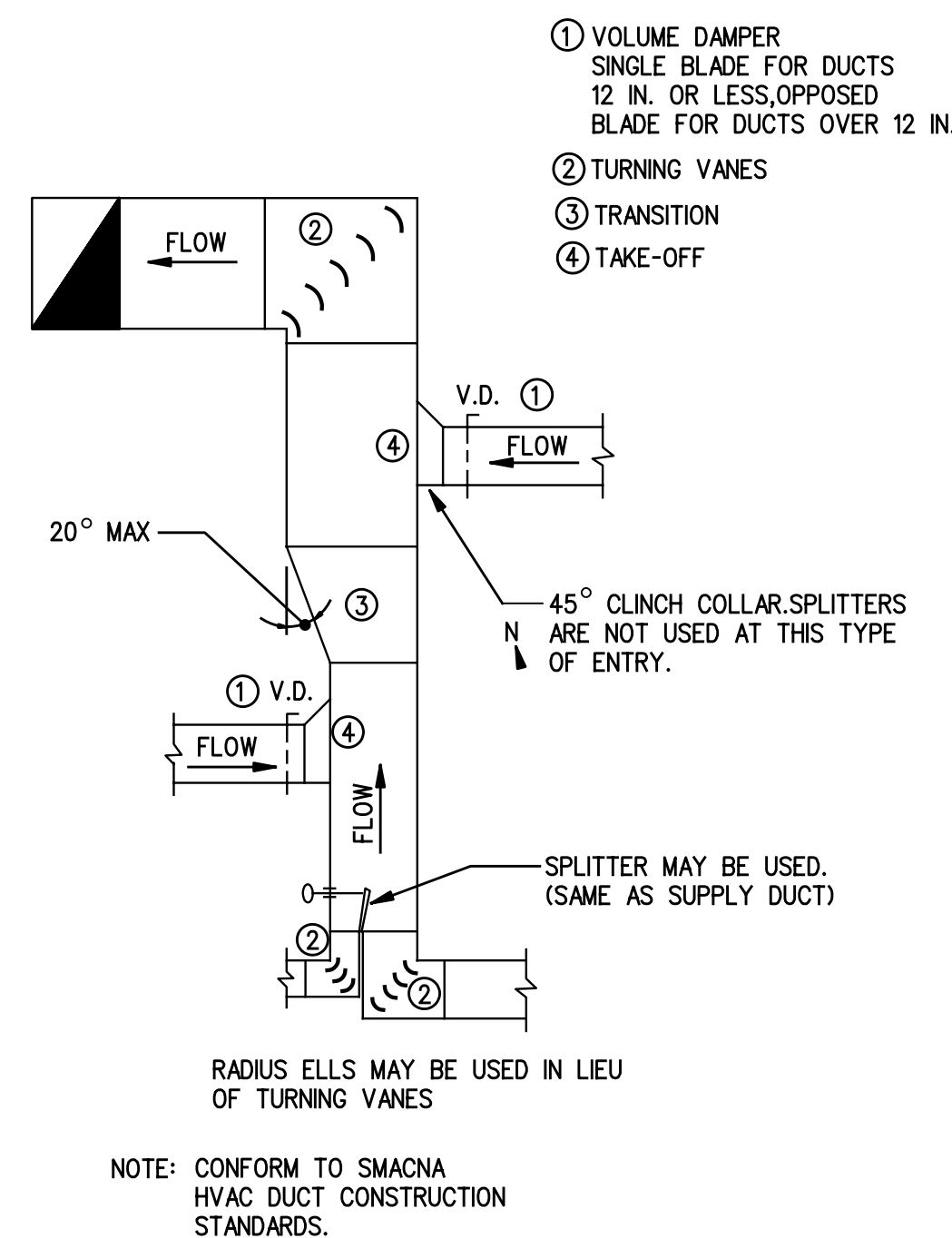
10 UPBLAST EXHAUST FAN WITH DUCTWORK
NOT TO SCALE



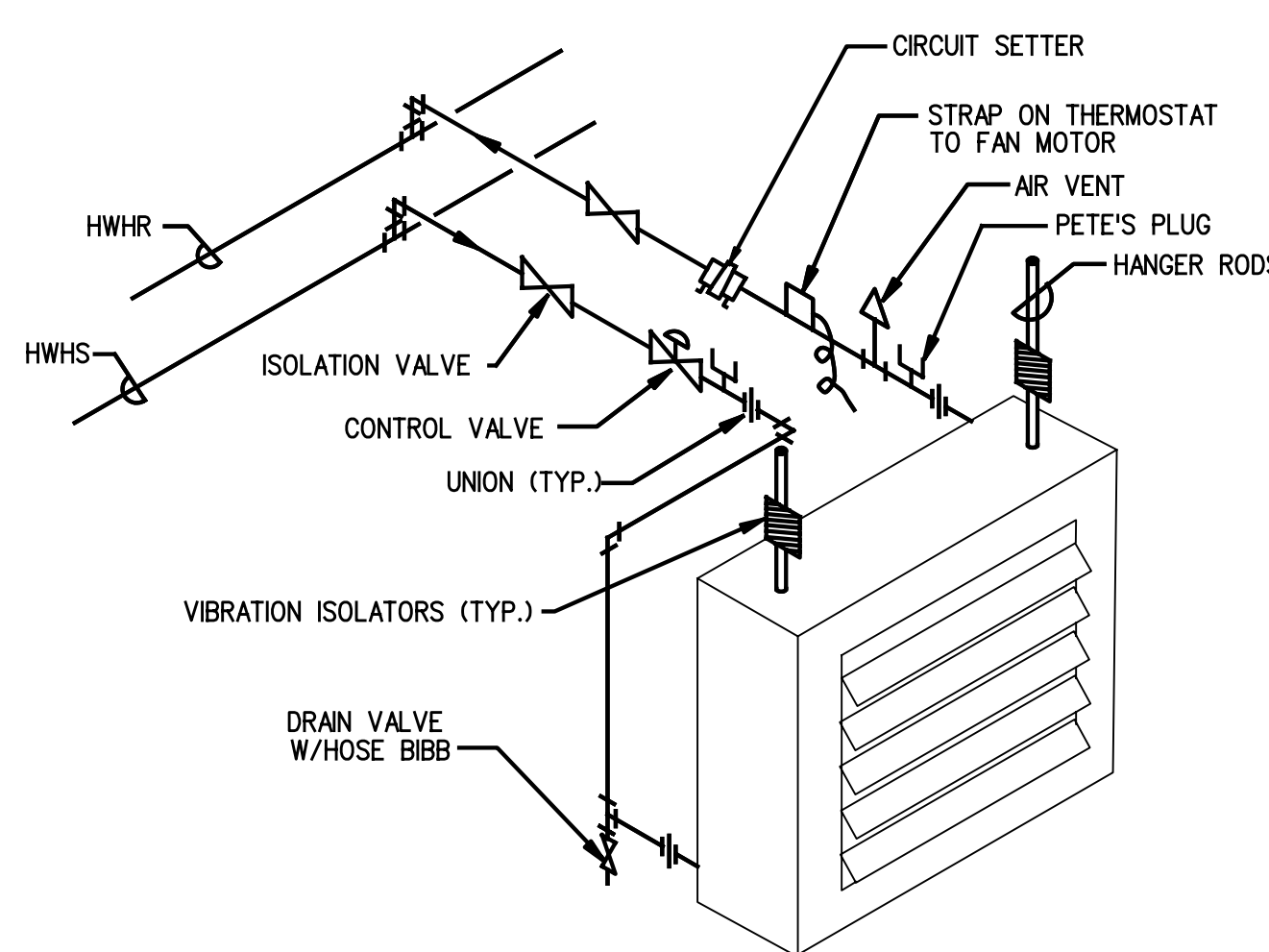
15 CEILING DIFFUSER TAKE-OFFS
NOT TO SCALE



11 SUPPLY DUCT CONNECTION DETAIL
NOT TO SCALE



16 EXHAUST OR RETURN DUCT CONNECTION
NOT TO SCALE



20 HW UNIT HEATER PIPING DETAIL (UH-2)
NOT TO SCALE