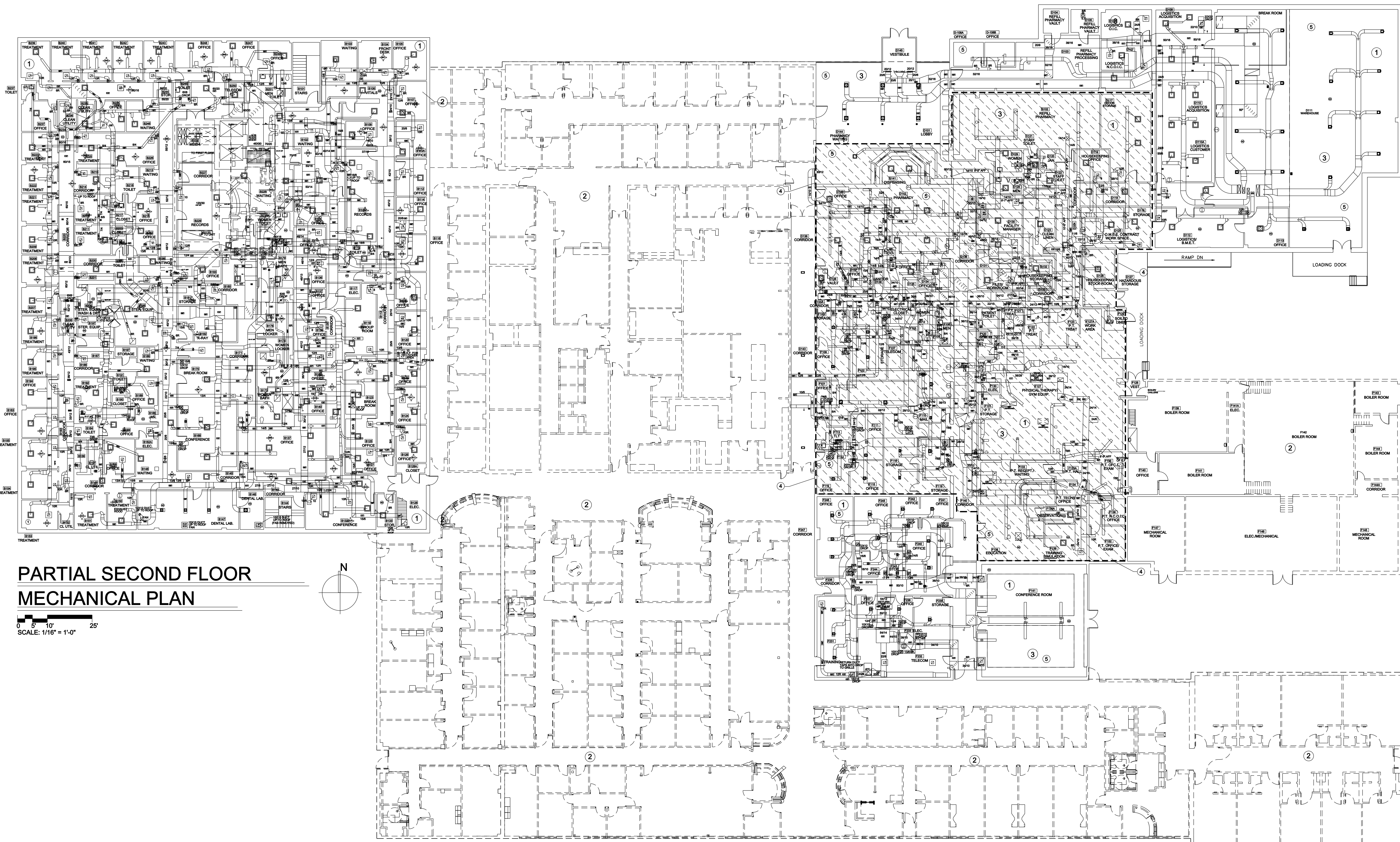


LITTLE ROCK A.F.B.
ARKANSAS

MIKE TRUSTY
ENGINEERING
PHONE: (501)224-9013
FAX: (501)421-0151
miketrusty@msn.com



PARTIAL SECOND FLOOR MECHANICAL PLAN

0 5' 10' 25'
SCALE: 1/16" = 1'-0"

PARTIAL FIRST FLOOR MECHANICAL PLAN

0 5' 10' 25'
SCALE: 1/16" = 1'-0"

KEYED NOTES:

- 1 THE PURPOSE OF THE DRAWING IS TO INDICATE THE AREAS THAT WERE EXAMINED AND THE EXISTING CONDITIONS DETERMINED. NOTE THAT THE WALLS AND DOOR OPENINGS AS WELL AS THE EXISTING MECHANICAL SYSTEMS ARE INDICATED TO SCALE AND REFLECT THE ACTUAL DIMENSIONAL CONDITIONS OF THE SPACES EXAMINED.
- 2 AREAS OUTSIDE THOSE SERVED BY THE FOUR UNITS EXAMINED WERE OBTAINED FROM EXISTING PLANS AND ARE PROVIDED FOR INFORMATION ONLY.
- 3 NOTE THAT DIMENSIONS AND HEIGHT OF DUCT INSTALLATION AS INDICATED ON THIS SHEET AND THE FOLLOWING PLANS IS ACTUAL INFORMATION OBTAINED BY DETAILED FIELD EXAMINATION. SEE FOLLOWING PLANS FOR LARGER SCALE DRAWINGS.
- 4 AREA INDICATED BY THIS HATCH PATTERN IS SERVED BY THE NEW AHU S-4 LOCATED IN THE EXISTING PENTHOUSE.
- 5 SEE FOLLOWING LARGE SCALE DRAWINGS FOR DETAIL OF EACH OF THE TYPES OF MECHANICAL DUCT SYSTEMS. NOTE THAT ALL DIMENSIONS, WALL LOCATIONS AND DUCT LOCATIONS IS ACTUAL FOR THE AREAS STUDIED.

AS-BUILT

PROJECT TITLE REPAIR & RENOVATE MEDICAL CLINIC PH V LITTLE ROCK AIR FORCE BASE JACKSONVILLE, ARKANSAS CHANGE ORDER TO PHASE V - 100% SUBMITTAL		SHEET TITLE MECHANICAL OVERALL FLOOR PLAN	
DRAWN BY GMT	LEAD DESIGNER GMT	PROJECT NUMBER NKAK#06-8006-5	SHEET M-102
DESIGNED BY GMT	DATE DEC. 3, 2010	SCALE AS SHOWN	04 of 21