

REVISIONS	DATE	DESCRIPTION	BY	APP'D
1	10/14/2003	ISSUED FOR FINAL WORK PLAN	AS-BUILT	
2	10/14/2003	ISSUED FOR FINAL WORK PLAN	AS-BUILT	
3	10/14/2003	ISSUED FOR FINAL WORK PLAN	AS-BUILT	
4	10/14/2003	ISSUED FOR FINAL WORK PLAN	AS-BUILT	
5	10/14/2003	ISSUED FOR FINAL WORK PLAN	AS-BUILT	
6	10/14/2003	ISSUED FOR FINAL WORK PLAN	AS-BUILT	
7	10/14/2003	ISSUED FOR FINAL WORK PLAN	AS-BUILT	
8	10/14/2003	ISSUED FOR FINAL WORK PLAN	AS-BUILT	
9	10/14/2003	ISSUED FOR FINAL WORK PLAN	AS-BUILT	
10	10/14/2003	ISSUED FOR FINAL WORK PLAN	AS-BUILT	
11	10/14/2003	ISSUED FOR FINAL WORK PLAN	AS-BUILT	
12	10/14/2003	ISSUED FOR FINAL WORK PLAN	AS-BUILT	
13	10/14/2003	ISSUED FOR FINAL WORK PLAN	AS-BUILT	
14	10/14/2003	ISSUED FOR FINAL WORK PLAN	AS-BUILT	
15	10/14/2003	ISSUED FOR FINAL WORK PLAN	AS-BUILT	
16	10/14/2003	ISSUED FOR FINAL WORK PLAN	AS-BUILT	
17	10/14/2003	ISSUED FOR FINAL WORK PLAN	AS-BUILT	
18	10/14/2003	ISSUED FOR FINAL WORK PLAN	AS-BUILT	
19	10/14/2003	ISSUED FOR FINAL WORK PLAN	AS-BUILT	
20	10/14/2003	ISSUED FOR FINAL WORK PLAN	AS-BUILT	
21	10/14/2003	ISSUED FOR FINAL WORK PLAN	AS-BUILT	
22	10/14/2003	ISSUED FOR FINAL WORK PLAN	AS-BUILT	
23	10/14/2003	ISSUED FOR FINAL WORK PLAN	AS-BUILT	
24	10/14/2003	ISSUED FOR FINAL WORK PLAN	AS-BUILT	
25	10/14/2003	ISSUED FOR FINAL WORK PLAN	AS-BUILT	
26	10/14/2003	ISSUED FOR FINAL WORK PLAN	AS-BUILT	
27	10/14/2003	ISSUED FOR FINAL WORK PLAN	AS-BUILT	
28	10/14/2003	ISSUED FOR FINAL WORK PLAN	AS-BUILT	
29	10/14/2003	ISSUED FOR FINAL WORK PLAN	AS-BUILT	
30	10/14/2003	ISSUED FOR FINAL WORK PLAN	AS-BUILT	
31	10/14/2003	ISSUED FOR FINAL WORK PLAN	AS-BUILT	
32	10/14/2003	ISSUED FOR FINAL WORK PLAN	AS-BUILT	
33	10/14/2003	ISSUED FOR FINAL WORK PLAN	AS-BUILT	
34	10/14/2003	ISSUED FOR FINAL WORK PLAN	AS-BUILT	
35	10/14/2003	ISSUED FOR FINAL WORK PLAN	AS-BUILT	
36	10/14/2003	ISSUED FOR FINAL WORK PLAN	AS-BUILT	
37	10/14/2003	ISSUED FOR FINAL WORK PLAN	AS-BUILT	
38	10/14/2003	ISSUED FOR FINAL WORK PLAN	AS-BUILT	
39	10/14/2003	ISSUED FOR FINAL WORK PLAN	AS-BUILT	
40	10/14/2003	ISSUED FOR FINAL WORK PLAN	AS-BUILT	
41	10/14/2003	ISSUED FOR FINAL WORK PLAN	AS-BUILT	
42	10/14/2003	ISSUED FOR FINAL WORK PLAN	AS-BUILT	
43	10/14/2003	ISSUED FOR FINAL WORK PLAN	AS-BUILT	
44	10/14/2003	ISSUED FOR FINAL WORK PLAN	AS-BUILT	
45	10/14/2003	ISSUED FOR FINAL WORK PLAN	AS-BUILT	
46	10/14/2003	ISSUED FOR FINAL WORK PLAN	AS-BUILT	
47	10/14/2003	ISSUED FOR FINAL WORK PLAN	AS-BUILT	
48	10/14/2003	ISSUED FOR FINAL WORK PLAN	AS-BUILT	
49	10/14/2003	ISSUED FOR FINAL WORK PLAN	AS-BUILT	
50	10/14/2003	ISSUED FOR FINAL WORK PLAN	AS-BUILT	
51	10/14/2003	ISSUED FOR FINAL WORK PLAN	AS-BUILT	
52	10/14/2003	ISSUED FOR FINAL WORK PLAN	AS-BUILT	
53	10/14/2003	ISSUED FOR FINAL WORK PLAN	AS-BUILT	
54	10/14/2003	ISSUED FOR FINAL WORK PLAN	AS-BUILT	
55	10/14/2003	ISSUED FOR FINAL WORK PLAN	AS-BUILT	
56	10/14/2003	ISSUED FOR FINAL WORK PLAN	AS-BUILT	
57	10/14/2003	ISSUED FOR FINAL WORK PLAN	AS-BUILT	
58	10/14/2003	ISSUED FOR FINAL WORK PLAN	AS-BUILT	
59	10/14/2003	ISSUED FOR FINAL WORK PLAN	AS-BUILT	
60	10/14/2003	ISSUED FOR FINAL WORK PLAN	AS-BUILT	
61	10/14/2003	ISSUED FOR FINAL WORK PLAN	AS-BUILT	
62	10/14/2003	ISSUED FOR FINAL WORK PLAN	AS-BUILT	
63	10/14/2003	ISSUED FOR FINAL WORK PLAN	AS-BUILT	
64	10/14/2003	ISSUED FOR FINAL WORK PLAN	AS-BUILT	
65	10/14/2003	ISSUED FOR FINAL WORK PLAN	AS-BUILT	
66	10/14/2003	ISSUED FOR FINAL WORK PLAN	AS-BUILT	
67	10/14/2003	ISSUED FOR FINAL WORK PLAN	AS-BUILT	
68	10/14/2003	ISSUED FOR FINAL WORK PLAN	AS-BUILT	
69	10/14/2003	ISSUED FOR FINAL WORK PLAN	AS-BUILT	
70	10/14/2003	ISSUED FOR FINAL WORK PLAN	AS-BUILT	
71	10/14/2003	ISSUED FOR FINAL WORK PLAN	AS-BUILT	
72	10/14/2003	ISSUED FOR FINAL WORK PLAN	AS-BUILT	
73	10/14/2003	ISSUED FOR FINAL WORK PLAN	AS-BUILT	
74	10/14/2003	ISSUED FOR FINAL WORK PLAN	AS-BUILT	
75	10/14/2003	ISSUED FOR FINAL WORK PLAN	AS-BUILT	
76	10/14/2003	ISSUED FOR FINAL WORK PLAN	AS-BUILT	
77	10/14/2003	ISSUED FOR FINAL WORK PLAN	AS-BUILT	
78	10/14/2003	ISSUED FOR FINAL WORK PLAN	AS-BUILT	
79	10/14/2003	ISSUED FOR FINAL WORK PLAN	AS-BUILT	
80	10/14/2003	ISSUED FOR FINAL WORK PLAN	AS-BUILT	
81	10/14/2003	ISSUED FOR FINAL WORK PLAN	AS-BUILT	
82	10/14/2003	ISSUED FOR FINAL WORK PLAN	AS-BUILT	
83	10/14/2003	ISSUED FOR FINAL WORK PLAN	AS-BUILT	
84	10/14/2003	ISSUED FOR FINAL WORK PLAN	AS-BUILT	
85	10/14/2003	ISSUED FOR FINAL WORK PLAN	AS-BUILT	
86	10/14/2003	ISSUED FOR FINAL WORK PLAN	AS-BUILT	
87	10/14/2003	ISSUED FOR FINAL WORK PLAN	AS-BUILT	
88	10/14/2003	ISSUED FOR FINAL WORK PLAN	AS-BUILT	
89	10/14/2003	ISSUED FOR FINAL WORK PLAN	AS-BUILT	
90	10/14/2003	ISSUED FOR FINAL WORK PLAN	AS-BUILT	
91	10/14/2003	ISSUED FOR FINAL WORK PLAN	AS-BUILT	
92	10/14/2003	ISSUED FOR FINAL WORK PLAN	AS-BUILT	
93	10/14/2003	ISSUED FOR FINAL WORK PLAN	AS-BUILT	
94	10/14/2003	ISSUED FOR FINAL WORK PLAN	AS-BUILT	
95	10/14/2003	ISSUED FOR FINAL WORK PLAN	AS-BUILT	
96	10/14/2003	ISSUED FOR FINAL WORK PLAN	AS-BUILT	
97	10/14/2003	ISSUED FOR FINAL WORK PLAN	AS-BUILT	
98	10/14/2003	ISSUED FOR FINAL WORK PLAN	AS-BUILT	
99	10/14/2003	ISSUED FOR FINAL WORK PLAN	AS-BUILT	
100	10/14/2003	ISSUED FOR FINAL WORK PLAN	AS-BUILT	

DESIGNED BY: DATE: 09/04/2003	PROJECT NO: 6503	CHECKED BY: DRAWING CODE:	REVIEWED BY: SOLIDATION NUMBER:
U.S. ARMY ENGINEERING AND SUPPORT CENTER CORPS OF ENGINEERS HUNTSVILLE, ALABAMA			
EARTHTECH			

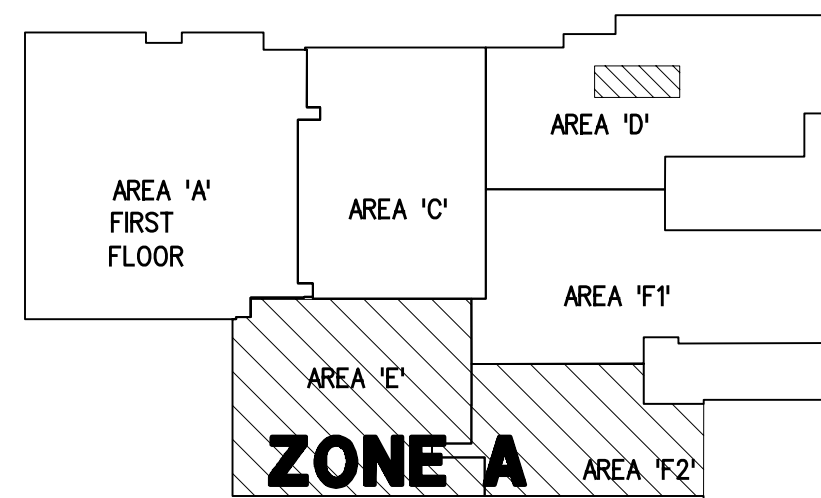
RENOVATE CLINIC
BUILDING 1090
LITTLE ROCK AFB, ARKANSAS

ZONE A

REHEAT COILS PIPING PLAN

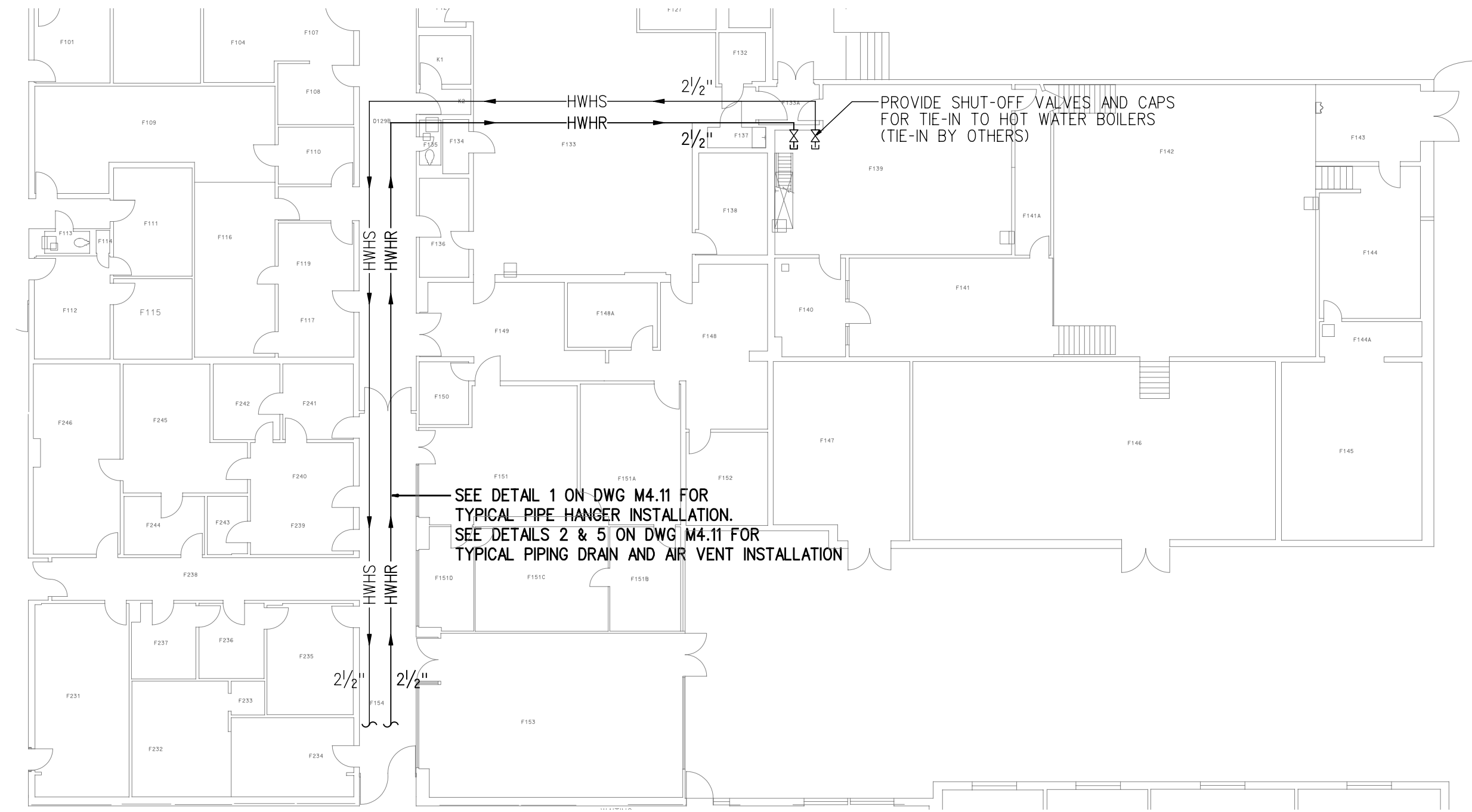
AS-BUILT

SHEET
REFERENCE
NUMBER:
M2.11
SHEET X OF XX



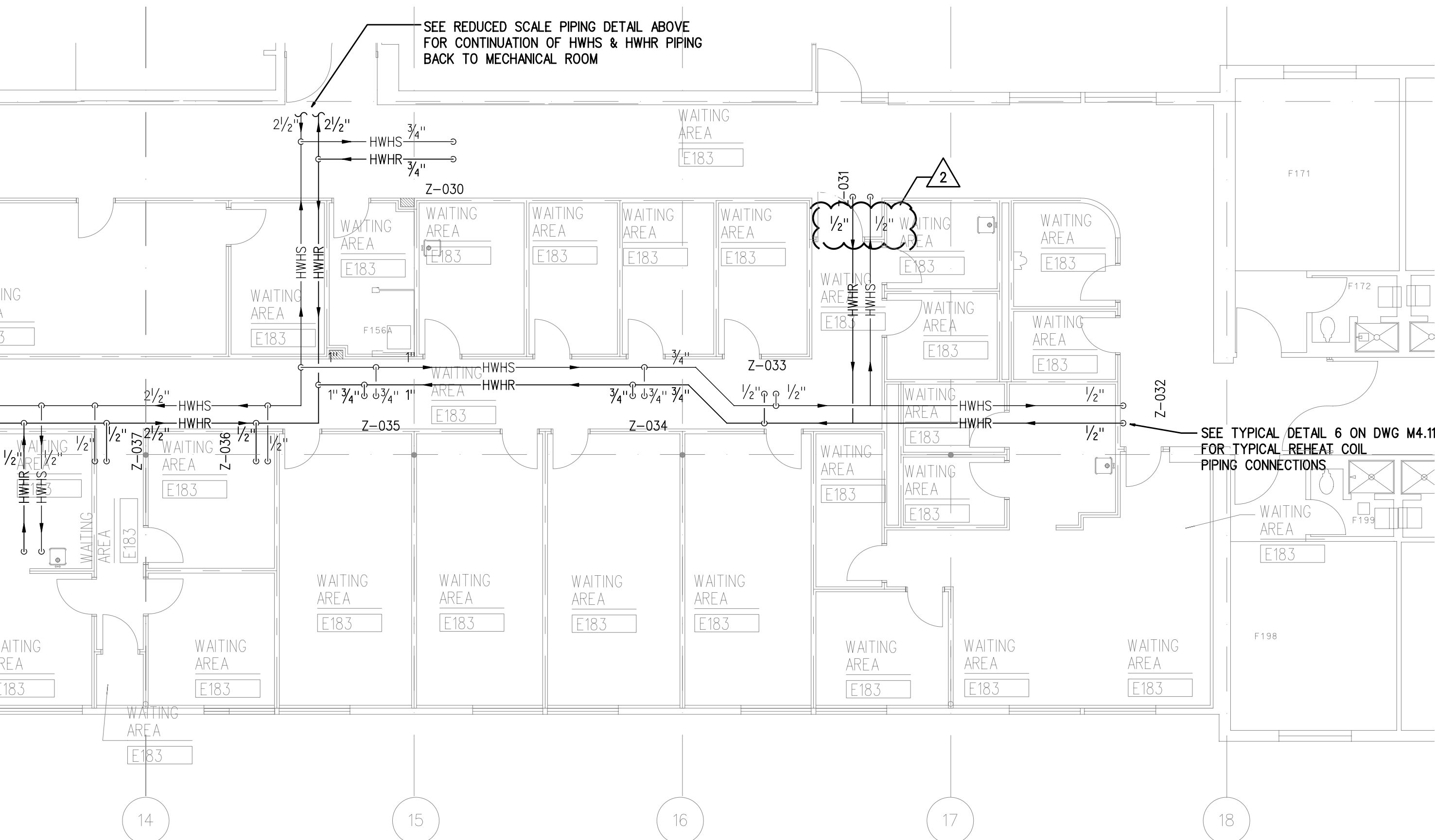
KEY PLAN
N.T.S.

SCALE

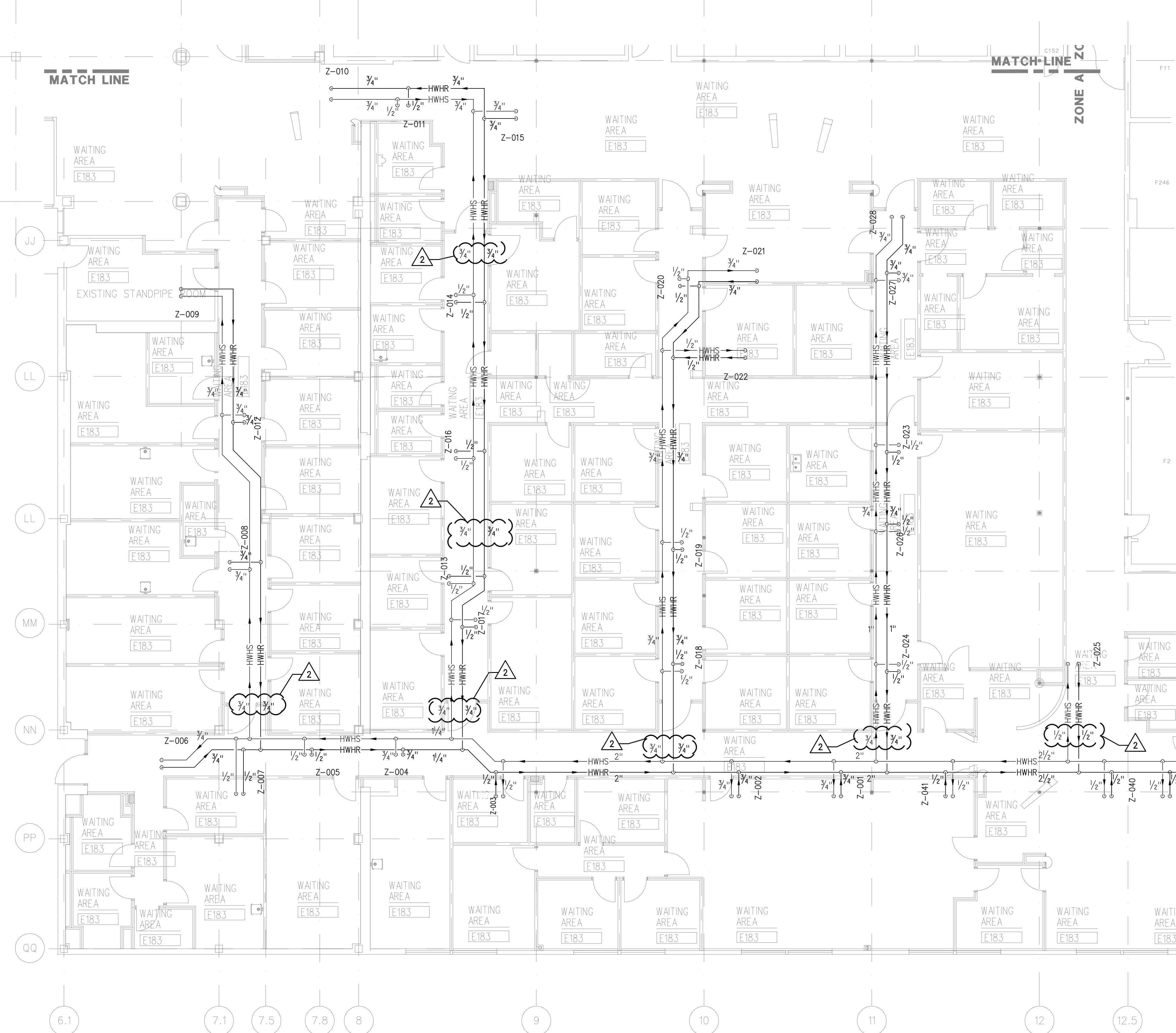


1 PARTIAL PLAN OF AREA 'F' IN ZONE A

SCALE 1/8" = 1'-0"



SEE TYPICAL DETAIL 6 ON DWG M4.11
FOR REPEAT COIL
PIPING CONNECTIONS.



MATCH LINE

ZONE A

MATCH LINE

2 ZONE A PLAN

SCALE 1/8" = 1'-0"

NOTES

1. SEE DWGS M4.11 AND M4.12 FOR TYPICAL INSTALLATION DETAILS