

KEYED NOTES:

- 1

INSTALL NEW PRIMARY SUMP PUMP. REFER TO DETAIL 7/M301.
- 2

INSTALL NEW SECONDARY SUMP PUMP. REFER TO DETAIL 7/M-301.
- 3

NOT USED.
- 4

NOT USED.
- 5

REPLACE EXISTING EMERGENCY SHOWER WITH NEW COMBINATION EYEWASH/SHOWER. GUARDIAN G1902. FURNISH FLOW SWITCH AND OPTIONAL AP275-100 ELECTRIC LIGHT AND HORN. ACTIVATION SHALL INITIATE THE ELECTRIC LIGHT AND HORN AND SHALL ALSO NOTIFY FACILITY MANAGER'S OFFICE (ROOM D125). REFER TO SHEET E-300 FOR WORK IN ROOM D125.
- 6

INSTALL 6" STRAINER WITH 20 MESH AND BLOW DOWN VALVE ON PUMP SUCTION PIPING. COORDINATE SHUTDOWN WITH OWNER.
- 7

INSTALL 4" STRAINER WITH 20 MESH AND BLOW DOWN VALVE ON PUMP SUCTION PIPING. COORDINATE SHUTDOWN WITH OWNER.
- 8

REPLACE EXISTING 8" 3-WAY DIVERTING VALVE AND PNEUMATIC ACTUATOR FOR CONDENSER WATER BYPASS WITH NEW DDC CONTROLLED ELECTRIC ACTUATOR. SERIES 2000 RESILIENT SEATED BUTTERFLY VALVES WITH SERIES 1000 ACTUATOR VSI OR EQUAL. DUCTILE IRON BODY, STAINLESS STEEL DISK AND SHAFT AND EPDM SEAT. ACTUATOR SHALL BE 120V, 1.8 AMP, MODULATING WITHOUT SPRING RETURN CAPABLE OF OPERATING VALVES AT 100 PSI SHUTOFF PRESSURE. CONNECT TO BASE'S EMCS.
- 9

NEW VERTICAL TURBINE PUMP.
- 10

INSTALL NEW CONCRETE CURB WITH CONTINUOUS WATER STOP.
- 11

REPLACE EXISTING 6" 3-WAY DIVERTING VALVE AND PNEUMATIC ACTUATOR FOR CONDENSER WATER BYPASS WITH NEW DDC CONTROLLED ELECTRIC ACTUATOR. SERIES 2000 RESILIENT SEATED BUTTERFLY VALVES WITH SERIES 1000 ACTUATOR VSI OR EQUAL. DUCTILE IRON BODY, STAINLESS STEEL DISK AND SHAFT AND EPDM SEAT. ACTUATOR SHALL BE 120V, 0.64 AMP, MODULATING WITHOUT SPRING RETURN CAPABLE OF OPERATING VALVES AT 100 PSI SHUTOFF PRESSURE. CONNECT TO BASE'S EMCS.
- 12

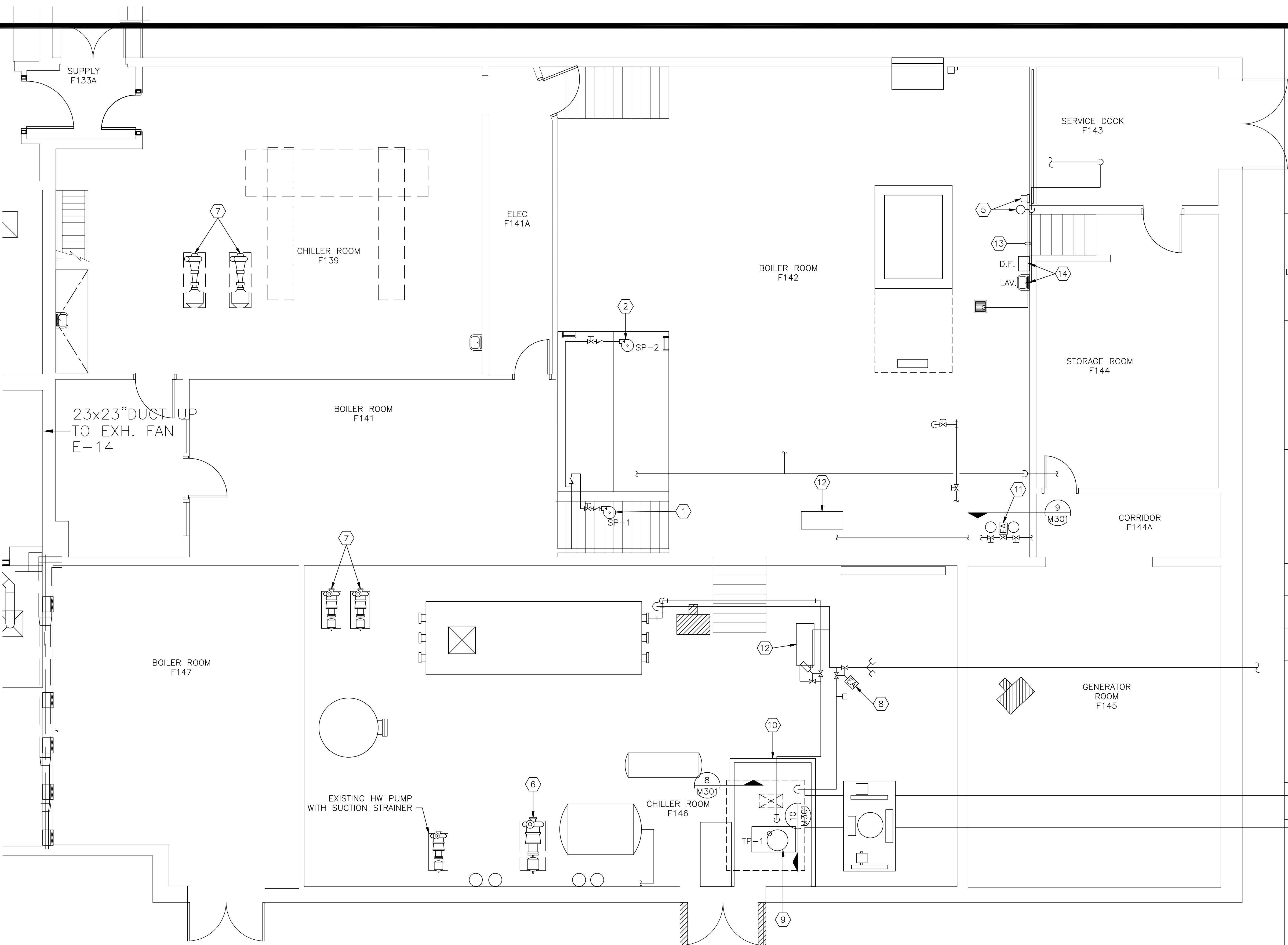
INSTALL NEW 6" STRAINER WITH 40 MESH AND BLOWDOWN ON INLET SIDES OF PLATE HEAT EXCHANGER'S 6" CHILLED WATER PIPE AND 6" CONDENSER WATER PIPE. COORDINATE SHUTDOWN WITH OWNER.
- 13

INSTALL NEW 1-1/2" HARD COPPER DRAIN PIPE FROM EYEWASH DRAIN TO EXISTING FLOOR DRAIN. INSTALL TIGHT IN CORNER AND SECURE TO SLAB/WALL WITH PIPE CLAMPS.
- 14

CONNECT DRAIN FOR EXISTING DRINKING FOUNTAIN AND HANDWASH LAVATORY TO NEW 1-1/2" COPPER DRAIN PIPE.

GENERAL NOTES:

1. PATCH AND PAINT HOLES IN WALLS AND SLABS WHERE PIPING OR CONDUITS ARE REMOVED. REFER TO ARCHITECTURAL SPECIFICATION FOR PATCHING AND PAINTING REQUIREMENTS.
2. SEAL ALL PENETRATIONS FOR 2-HOUR FIRE RATING.



1 MECHANICAL ROOM INSTALLATION PLAN  
M-203 SCALE: 1/4" = 1'-0"



LITTLE ROCK A.F.B.  
ARKANSAS

GARVER ENGINEERS

1010 BATTERY STREET  
LITTLE ROCK, ARKANSAS 72202  
www.garverengineers.com  
(501) 376-3633

CROMWELL  
ARCHITECTS ENGINEERS

101 SOUTH SPRING ST  
LITTLE ROCK AR 72201  
TELEPHONE 501-372-2900  
FACSIMILE 501-372-0482

No.	Revision/Issue	Date	BY	APP'D

PROJECT TITLE  
REPAIR & RENOVATE MEDICAL CLINIC PH IV  
LITTLE ROCK AIR FORCE BASE  
JACKSONVILLE, ARKANSAS  
100% SUBMITTAL

DRAWN BY  
JCF  
TECH REVIEWER  
JCF  
DESIGNED BY  
JCF  
DATE  
JULY 11, 2008  
SCALE  
AS NOTED

MECHANICAL ROOM  
INSTALLATION PLAN

PROJECT NUMBER  
NKAK#06-8006-4  
SHEET  
M-203  
32  
OF