



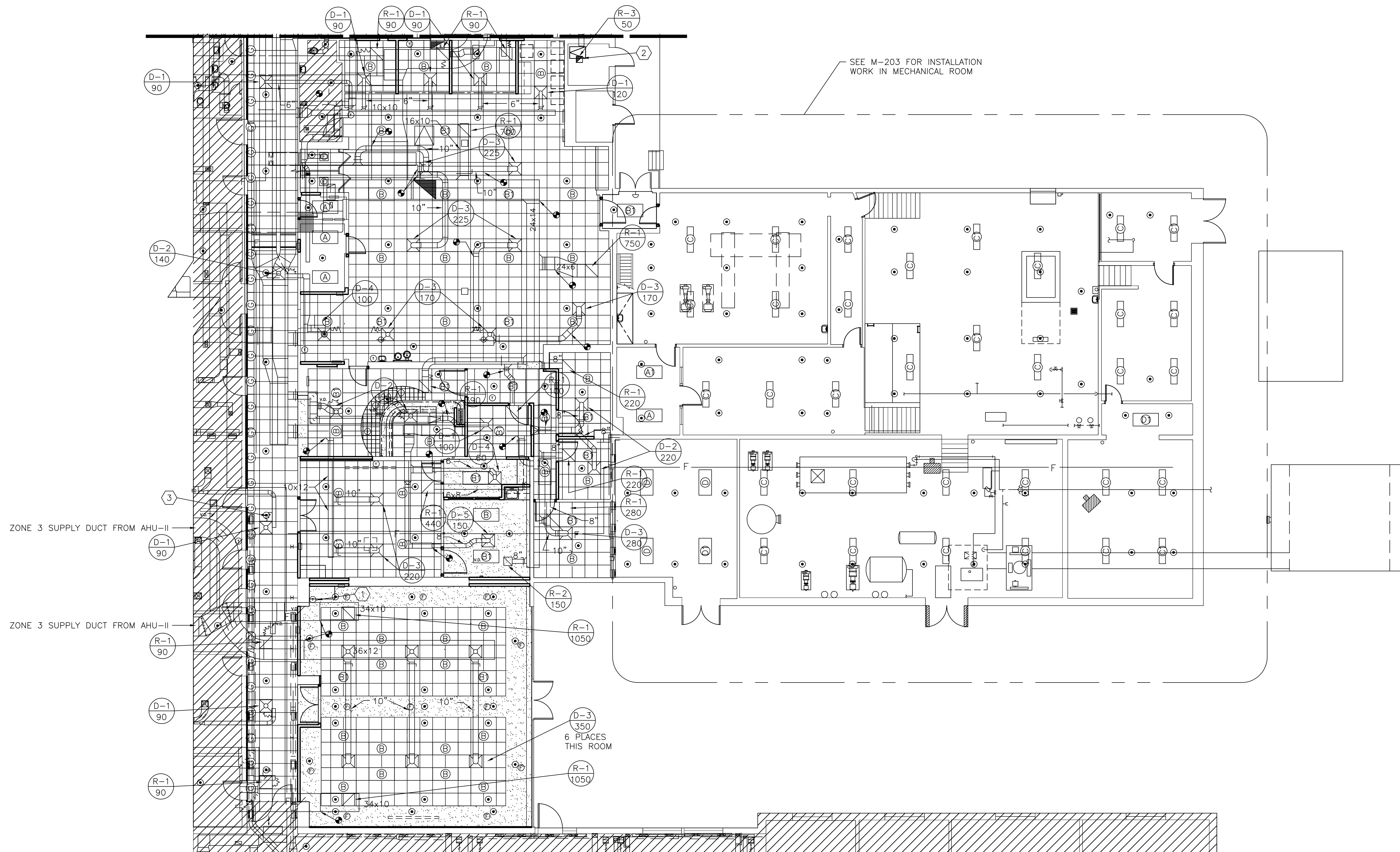
LITTLE ROCK A.F.B.  
ARKANSAS

**GARVER ENGINEERS**

1010 BATTERY STREET  
LITTLE ROCK, ARKANSAS 72202  
www.garverengineers.com  
(501) 376-3633

**CROMWELL**  
ARCHITECTS ENGINEERS

101 SOUTH SPRING ST  
LITTLE ROCK AR 72201  
TELEPHONE 501-372-2900  
FACSIMILE 501-372-0482



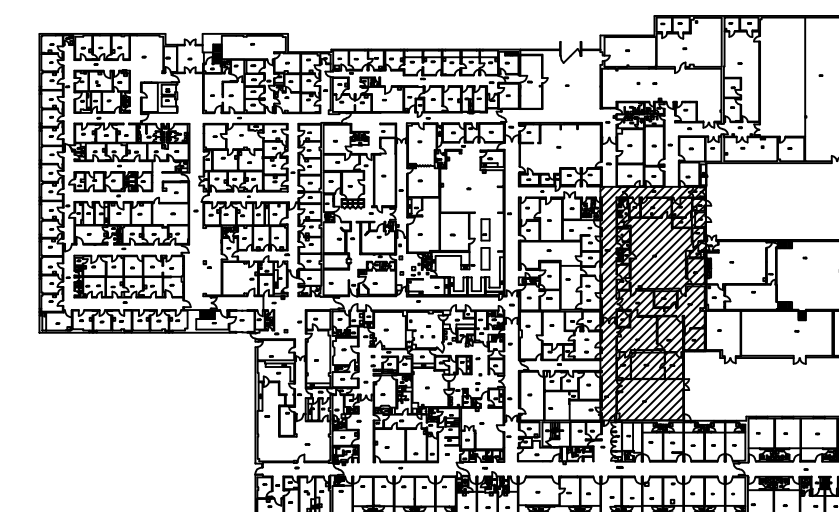
1 MECHANICAL INSTALLATION PLAN AREA "B"  
M-202 SCALE: 1/8" = 1'-0"

GENERAL NOTES:

- WHERE NOT SPECIFICALLY INDICATED ON DRAWINGS, ROUND RUNOUTS TO NEW DIFFUSERS SHALL MATCH THE DIFFUSER'S INLET SIZE.
- RUNOUTS FOR ALL NEW SUPPLY DIFFUSERS, RETURN GRILLES, AND EXHAUST GRILLES SHALL BE EQUIPPED WITH MANUAL BALANCING DAMPERS. INSTALL NEW IF NOT EXISTING.

KEYED NOTES:

- EXISTING THERMOSTAT FOR AHU-II ZONE 3. SEE KEYED NOTE 3, SHEET M-102.
- INSTALL NEW GRILLE FOR EXISTING EXHAUST DUCT. EXISTING OPENING THRU CEILING IS 12X12.
- TYPICAL INDICATION FOR CONNECTION FROM EXISTING DUCT TO NEW AIR DEVICE (DOES NOT INDICATE FLEX DUCT CONNECTION). FLEX DUCT CONNECTORS ARE LIMITED TO 3'-0" LENGTHS, VERTICAL STRAIGHT RUNS ONLY. CONNECTIONS TO AIR DEVICES SHALL BE BY DUCT THAT MATCHES THE DIFFUSER NECK SIZE OR THE RETURN/EXHAUST DUCT SIZE.



KEY PLAN

PROJECT TITLE  
REPAIR & RENOVATE MEDICAL CLINIC PH IV  
LITTLE ROCK AIR FORCE BASE  
JACKSONVILLE, ARKANSAS  
100% SUBMITTAL

DRAWN BY  
JCF  
TECH REVIEWER  
JCF  
DESIGNED BY  
JCF  
DATE  
JULY 14, 2008  
SCALE  
AS NOTED

SHEET TITLE  
JCF

LEAD DESIGNER

PROJECT NUMBER  
NKAK#06-8006-4  
SHEET  
M-202

31  
OF