

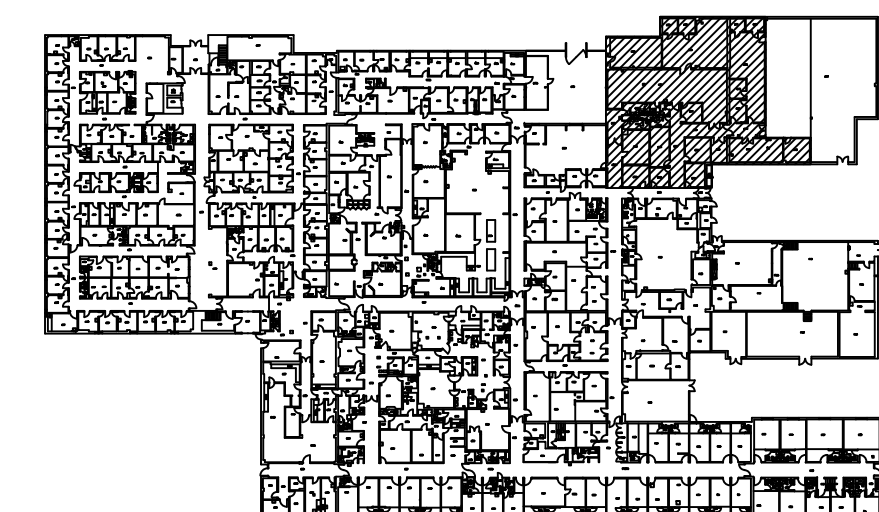
1 MECHANICAL INSTALLATION PLAN AREA "A"  
M-201 SCALE: 1/8" = 1'-0"

**KEYED NOTE:**

- 1 NEW LOCATION FOR RELOCATED ZONE 3 THERMOSTAT.
- 2 TYPICAL INDICATION FOR CONNECTION FROM EXISTING DUCT TO NEW AIR DEVICE (DOES NOT INDICATE FLEX DUCT CONNECTION). FLEX DUCT CONNECTORS ARE LIMITED TO 3'-0" LENGTHS. VERTICAL STRAIGHT RUNS ONLY. CONNECTIONS TO AIR DEVICES SHALL BE BY DUCT THAT MATCHES THE DIFFUSER NECK SIZE OR THE RETURN/EXHAUST DUCT SIZE.

**GENERAL NOTES:**

1. WHERE NOT SPECIFICALLY INDICATED ON DRAWINGS, ROUND RUNOUTS TO NEW DIFFUSERS SHALL MATCH THE DIFFUSER'S INLET SIZE.
2. RUNOUTS FOR ALL NEW SUPPLY DIFFUSERS, RETURN GRILLES, AND EXHAUST GRILLES SHALL BE EQUIPPED WITH MANUAL BALANCING DAMPERS. INSTALL NEW IF NOT EXISTING.



KEY PLAN



LITTLE ROCK A.F.B.  
ARKANSAS

**GARVER ENGINEERS**

1010 BATTERY STREET  
LITTLE ROCK, ARKANSAS 72202  
www.garverengineers.com  
(501) 376-3633

**CROMWELL**  
ARCHITECTS ENGINEERS

101 SOUTH SPRING ST  
LITTLE ROCK AR 72201  
TELEPHONE 501-372-2900  
FACSIMILE 501-372-0482

No.	Revision/Issue	Date	BY	APP'D

PROJECT TITLE  
REPAIR & RENOVATE MEDICAL CLINIC PH IV  
LITTLE ROCK AIR FORCE BASE  
JACKSONVILLE, ARKANSAS  
100% SUBMITTAL

DRAWN BY CAG	LEAD DESIGNER JCF
TECH REVIEWER JCF	PROJECT NUMBER NKAK#06-8006-4
DESIGNED BY JCF	SHEET M-201
DATE JULY 1, 2008	
SCALE AS NOTED	30 OF