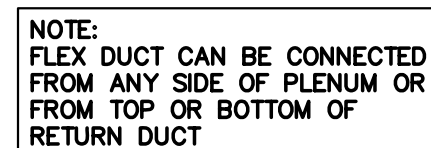




SCALE: N.T.S.



CEILING RETURN GRILLE DETAIL

SCALE: N.T.S.

NOTES:

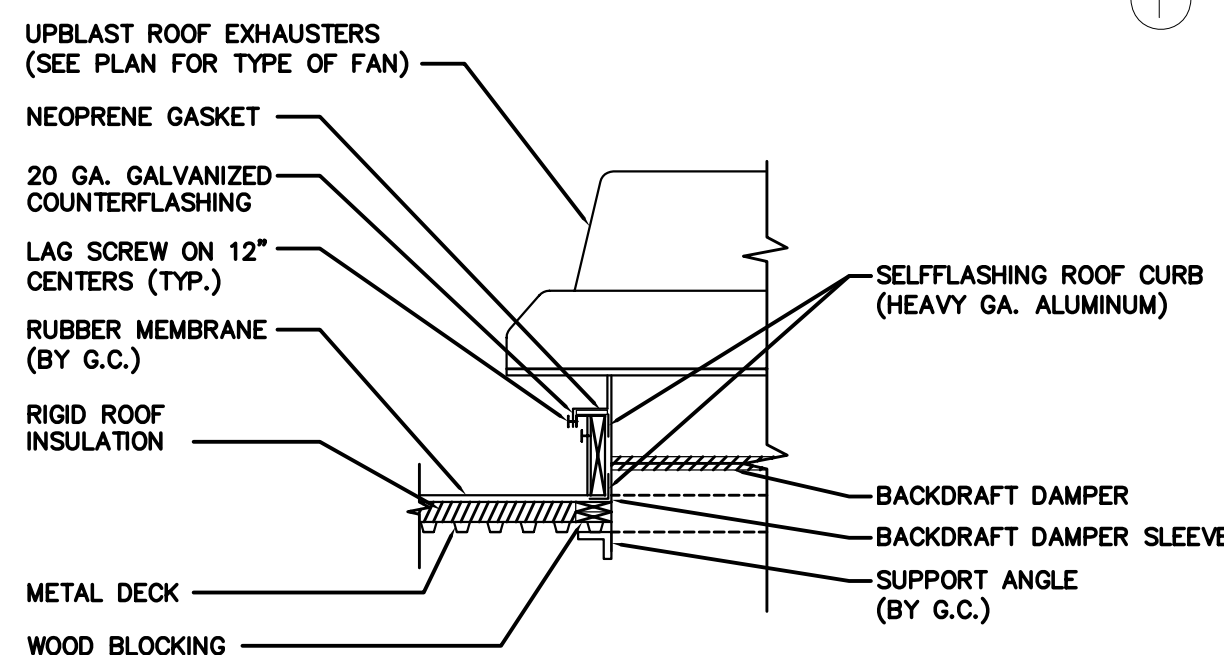
1. ALL EXISTING DIFFUSERS AND REGISTERS SHALL BE REPLACED WITH NEW.
REFER TO REFLECTED CEILING PLAN FOR THE EXACT LOCATION OF SUPPLY DIFFUSERS, EXHAUST AND RETURN REGISTERS.
 2. EXISTING DROPS (BRANCHES) TO DIFFUSERS AND REGISTERS SHALL BE THE SAME SIZE AS NECK SIZE OF DIFFUSER OR LISTED SIZE OF GRILLES. IF IT IS NOT POSSIBLE TO REUSE EXISTING DROPS TO DIFFUSERS AND REGISTERS, REMOVE EXISTING DROPS TO MAIN BRANCH DUCT AND TIGHTLY PATCH OPENING IN MAIN BRANCH. CONNECT NEW DIFFUSERS AND REGISTERS ACCORDING TO DETAILS SHOWN ON THIS DRAWING.
 3. ALL BRANCHES TO SUPPLY DIFFUSERS AND EXHAUST/RETURN REGISTERS SHALL HAVE VOLUME DAMPER FOR BALANCING OF AIR SYSTEM
 4. WHERE NECESSARY, PROVIDE SECTOR BAFFLES IN NECK OF SUPPLY DIFFUSERS FOR 1-WAY, 2-WAY OR 3-WAY DISCHARGE PATTERNS.
 5. ALL BRANCHES OF SUPPLY, RETURN AND EXHAUST DUCTWORK NOT SHOWN IN DEMOLITION DRAWINGS, WHICH WILL BECOME INACTIVE AFTER INSTALLATION OF NEW BRANCHES TO NEW DIFFUSERS AND REGISTERS, SHALL BE REMOVED BACK TO MAIN DUCT AND OPENING TIGHTLY PATCHED.
 6. PROVIDE NOMINAL 9,000 MBH COOLING CAPACITY, 340 CFM (ADJUSTABLE), DUCTLESS SPLIT AIR CONDITIONING SYSTEM FOR ROOM C117 (ENVIROMASTER INTERNATIONAL MODELS CH 09 AND C2C-09AT OR APPROVED EQUAL) AND WATH THERMOSTAT.
- THE CONDENSING UNIT SHALL BE LOCATED ON THE ROOF AND THE CASSETTE EVAPORATOR SHALL BE INSTALLED IN ROOM C117 IN ACCORDANCE WITH MANUFACTURER'S INSTRUCTIONS.
- REFRIGERANT PIPING BETWEEN THE OUTDOOR AND INDOOR SECTIONS SHALL BE COPPER TYPE "L" RUM IN ACCORDANCE WITH MANUFACTURER'S INSTALLATION INSTRUCTIONS. THE SUCTION PIPING SHALL BE COVERED WITH MINIMUM 3/4 IN. THICK CELLULAR ELASTOMER INSULATION OR APPROVED EQUAL.
- CONDENSATE DRAIN PIPING SHALL BE 3/4 IN. O.D. COPPER TYPE "L" RUM ABOVE THE SUSPENDED CEILING. CONDENSATE DRAINING SHALL BE THROUGH THE OUTSIDE WALL, THEN DROP INSIDE OF THE PARTITION ABOVE FLOOR AND THROUGH THE OUTSIDE WALL TO RUN ON GRASS.

DUCTLESS SPLIT SYSTEM DIMENSIONAL DATA (INCHES)					
UNIT		HEIGHT	WIDTH	DEPTH	WEIGHT
INDOOR CAH 09	CABINET	10-3/4	22-1/2	22-1/2	40 LBS.
	FASCIA	2-1/4	25	25	5 LBS.
OUTDOOR C2C-09AT		36	24	15	105 LBS.

DIFFUSER, REGISTER, AND GRILLE SCHEDULE									
TAG. NO.	MANUF.	MODEL NO.	DESCRIPTION	MODULE SIZE	CFM RANGE	NOMINAL DUCT SIZE	MAX N.C.	MAX. TOTAL PRESSURE (in w.c.)	REMARKS
A	TITUS	350ZFL	RETURN/EXHAUST GRILLE AND REGISTERS		0-135	6"x6"	13	0.067	SEE NOTES
B	TITUS	350ZFL	RETURN/EXHAUST GRILLE AND REGISTERS		135-260	8"x8"	16	0.067	SEE NOTES
C	TITUS	350ZFL	RETURN/EXHAUST GRILLE AND REGISTERS		260-415	10"x10"	18	0.067	SEE NOTES
D	TITUS	350ZFL	RETURN/EXHAUST GRILLE AND REGISTERS		415-615	12"x12"	20	0.067	SEE NOTES
E	TITUS	350ZFL	RETURN/EXHAUST GRILLE AND REGISTERS		615-855	14"x14"	21	0.067	SEE NOTES
F	TITUS	TMSA-AA	SQUARE CEILING DIFFUSER	12"x12"	0-75	4" DIA.	18	0.053	SEE NOTES
G	TITUS	TMSA-AA	SQUARE CEILING DIFFUSER	12"x12"	75-110	5" DIA.	18	0.086	SEE NOTES
H	TITUS	TMSA-AA	SQUARE CEILING DIFFUSER	12"x12"	110-140	6" DIA.	20	0.097	SEE NOTES
I	TITUS	TMSA-AA	SQUARE CEILING DIFFUSER	12"x12"	140-210	8" DIA.	22	0.129	SEE NOTES
J	TITUS	TMSA-AA	SQUARE CEILING DIFFUSER	24"x24"	95-155	6" DIA.	18	0.076	SEE NOTES
K	TITUS	TMSA-AA	SQUARE CEILING DIFFUSER	24"x24"	155-280	8" DIA.	21	0.088	SEE NOTES
L	TITUS	TMSA-AA	SQUARE CEILING DIFFUSER	24"x24"	280-380	10" DIA.	22	0.092	SEE NOTES
M	TITUS	TMSA-AA	SQUARE CEILING DIFFUSER	24"x24"	380-470	10" DIA.	23	0.090	SEE NOTES
N	TITUS	TMSA-AA	SQUARE CEILING DIFFUSER	24"x24"	470-640	12" DIA.	23	0.098	SEE NOTES

NOTES:

1. ALL DIFFUSERS MOUNTED IN HARD CEILINGS, OR IN ROOMS WHERE AIR FLOW IS LESS THAN 75 CFM, SHALL HAVE 12"x12" FACE SIZE.
2. MANUFACTURER RECOMMENDATION IS BASIS OF DESIGN OR USE APPROVED EQUAL.
3. SEE HVAC DUCTWORK PLAN DRAWINGS FOR DIFFUSER DESIGN AIR FLOW CFM.
4. WHITE FINISH UNLESS OTHERWISE NOTED.
5. ALUMINUM CONSTRUCTION UNLESS OTHERWISE NOTED.
6. ALL DIFFUSERS SHALL BE PROVIDED WITH ROUND DAMPER. DAMPER SHALL BE OPERABLE FROM THE FACE OF THE DIFFUSER.
7. ALL EXHAUST / RETURN GRILLES SHALL BE PROVIDED WITH OPPOSED BLADE VOLUME DAMPER. DAMPER SHALL BE OPERABLE FROM THE FACE OF THE REGISTER.
8. DIFFUSERS AND REGISTERS IN HARD CEILING SHALL BE FURNISHED WITH INTEGRAL DAMPERS.

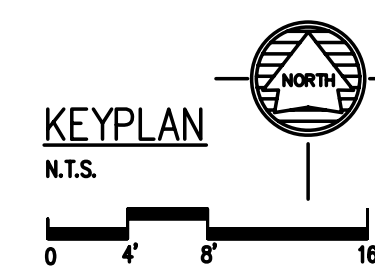


FLAT ROOF CURB DETAIL

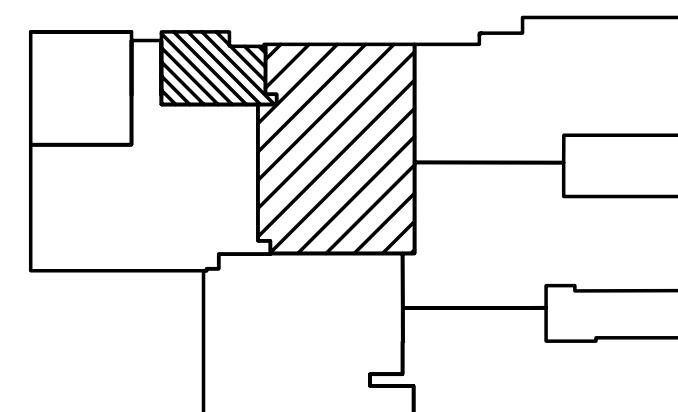
SCALE: N.T.S.

1 HVAC PLAN

SCALE: 1/8" = 1'-0"



SCALE



AS BUILT S

[illegible]

SUBJECT TITLE REPAIR MEDICAL CENTER PH 3
LITTLE ROCK AFB, ARKANSAS

HVAC PLAN, DETAILS AND SCHEDULES

PROJECT TITLE	REPA LITT	SHEET TITLE	D
DRAWN BY	MJG/RJR	LEAD DESIGNER	AM
TECH REVIEWER	AM	PROJECT NUMBER	NKAK 06-800
DESIGNED BY	OD	SHEET	MO.21
DATE	8-11-06		
SCALE	1/8"=1'-0"	22	OF 37