

MECHANICAL DEMOLITION LEGEND

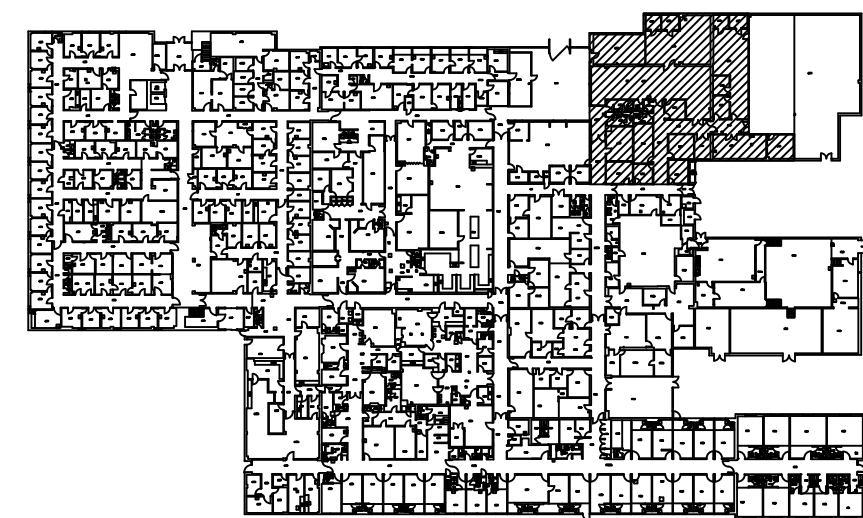
- EXISTING DUCTWORK TO REMAIN
- EXISTING DUCTWORK TO BE DEMOLISHED
- EXISTING SUPPLY DIFFUSER TO BE DEMOLISHED
- EXISTING RETURN GRILLE TO BE DEMOLISHED
- EXISTING EXHAUST GRILLE TO BE DEMOLISHED

KEYED NOTE:

- 1 RELOCATE EXISTING THERMOSTAT (SEE SHEET M-201 FOR NEW LOCATION).
- 2 REMOVE EXISTING PNEUMATIC THERMOSTAT FOR REPLACEMENT WITH NEW DDC THERMODTAT. REPAIR WALL TO MATCH EXISTING. SEE M-201 FOR NEW THERMOSTAT LOCATION.

GENERAL NOTES:

1. CONTRACTOR SHALL PERFORM AN OPERATIONAL TEST ON ALL HVAC CONTROLS AFFECTED BY THIS CONTRACT INCLUDING THERMOSTATS AND MIXING BOXES AND REPORT THE RESULTS IN WRITING. UNLESS PROVEN OTHERWISE PRIOR TO DEMOLITION, ALL EXISTING THERMOSTATS AND MIXING BOXES ARE ASSUMED TO OPERATE PROPERLY.
2. REMOVE EXISTING AIR DEVICES WITHIN THE PROJECT BOUNDARY. LEAVE EXISTING DUCT IN PLACE UNLESS OTHERWISE NOTED.
3. REMOVE ALL DEMOLISHED ITEMS; DO NOT ABANDON IN PLACE.
4. REMOVAL OF PIPING: ALSO REMOVE ALL ASSOCIATED PIPE HANGERS.
5. DUCT RUNOUTS THAT ARE REMOVED SHALL BE CAPPED WITH GALVANIZED SHEET METAL, SEALED AIR TIGHT, AND INSULATED.
6. AIR HANDLERS S-4 AND SPU-3 HAVE BEEN CONVERTED TO DDC CONTROLS AND ARE CONNECTED TO THE BASE'S EMCS. ANY PNEUMATIC CONTROL DEVICES THAT ARE DISCOVERED DURING CONSTRUCTION SHALL BE REMOVED AND REPLACED WITH DDC CONTROLS AND CONNECTED TO THE BASE'S EMCS. UTILIZE UNIT PRICING IN EFFECT WITH TRANE ARKANSAS.



KEY PLAN



LITTLE ROCK A.F.B.
ARKANSAS

GARVER ENGINEERS

1010 BATTERY STREET
LITTLE ROCK, ARKANSAS 72202
www.garverengineers.com
(501) 376-3633

CROMWELL

ARCHITECTS ENGINEERS

101 SOUTH SPRING ST
LITTLE ROCK AR 72201
TELEPHONE 501-372-2900
FACSIMILE 501-372-0482

No.	Revision/Issue	Date	BY	APP'D

PROJECT TITLE
REPAIR & RENOVATE MEDICAL CLINIC PH IV
LITTLE ROCK AIR FORCE BASE
JACKSONVILLE, ARKANSAS
100% SUBMITTAL

MECHANICAL DEMOLITION PLAN AREA "A"

DRAWN BY CAG	LEAD DESIGNER JCF
TECH. REVIEWER JCF	PROJECT NUMBER NKAK#06-8006-4
DESIGNED BY JCF	SHEET M-101
DATE JULY 1, 2008	
SCALE AS NOTED	27 OF