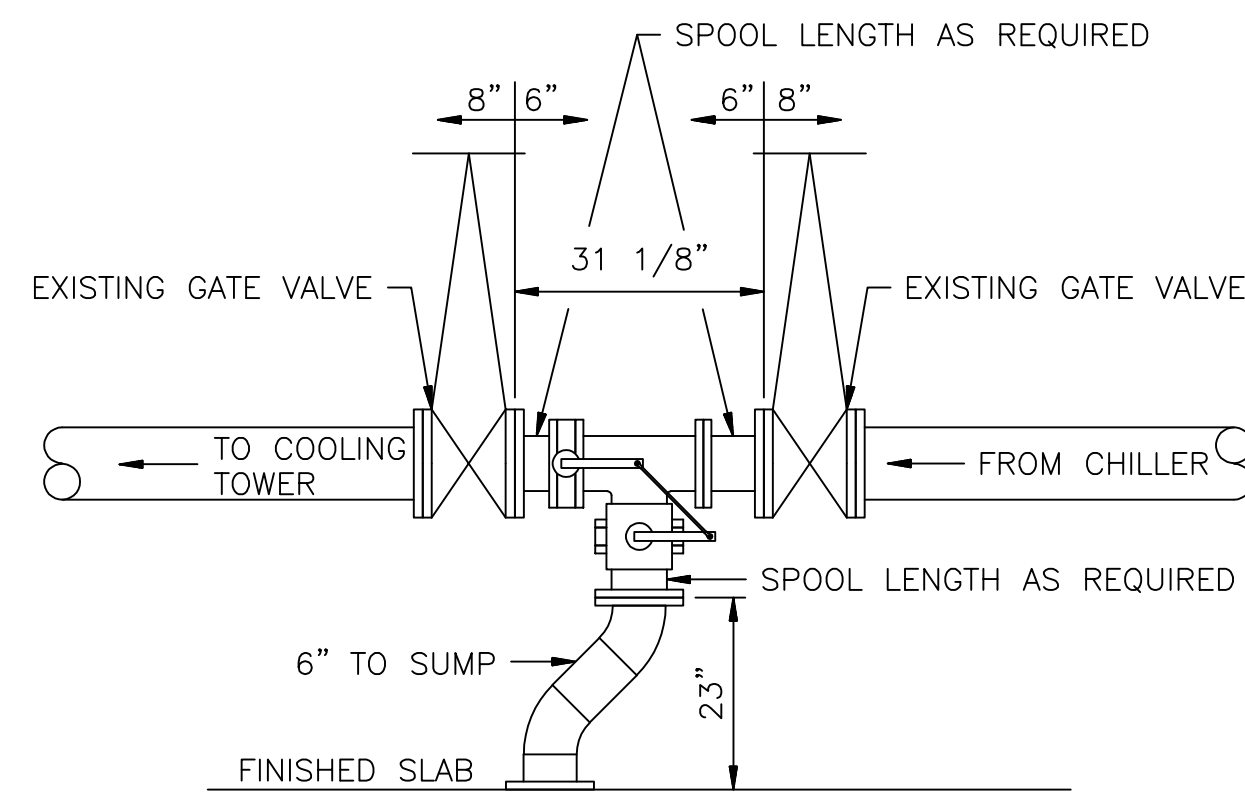
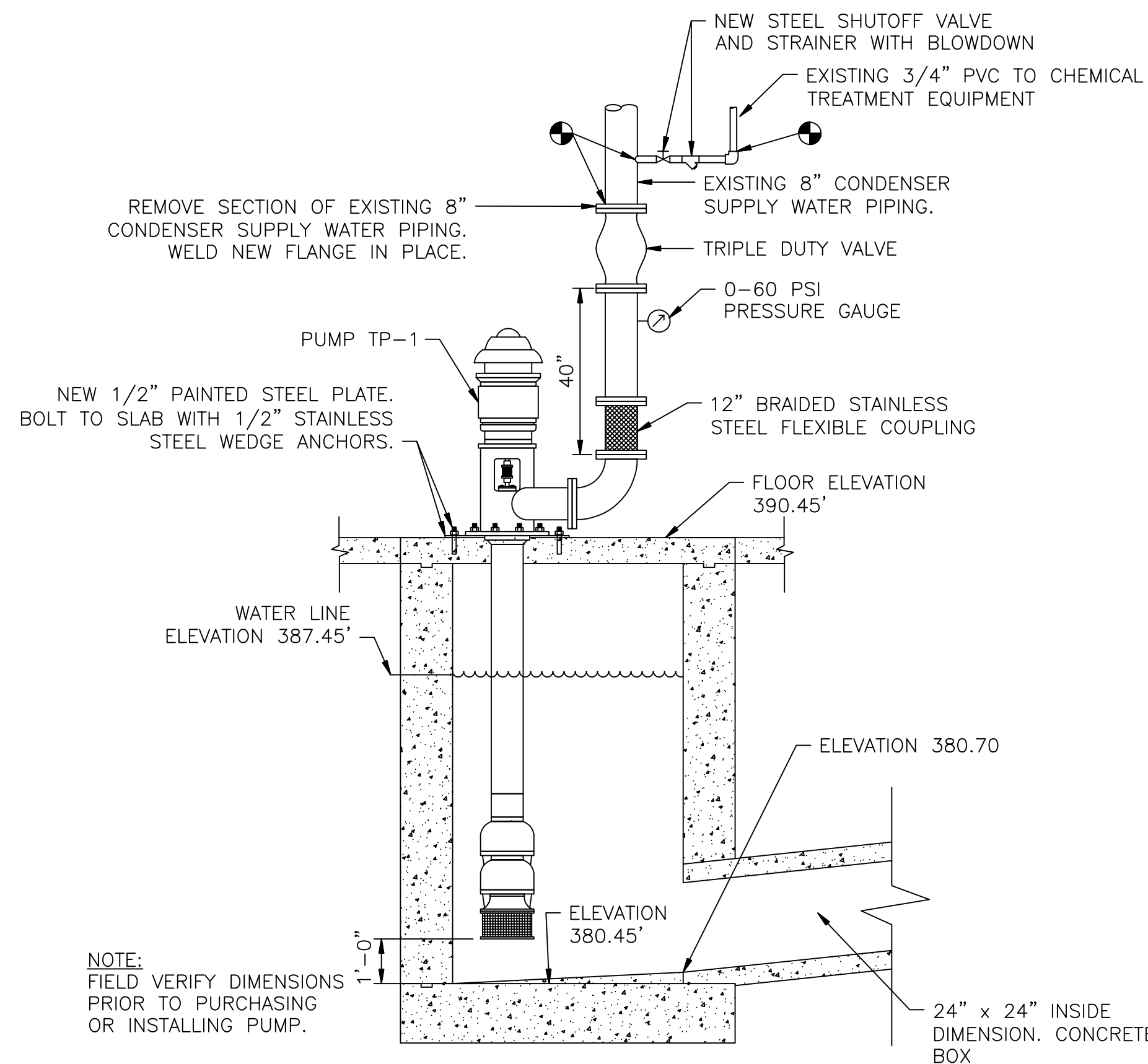


8 CONCRETE CURB CROSS SECTION  
M-301 SCALE: NONE

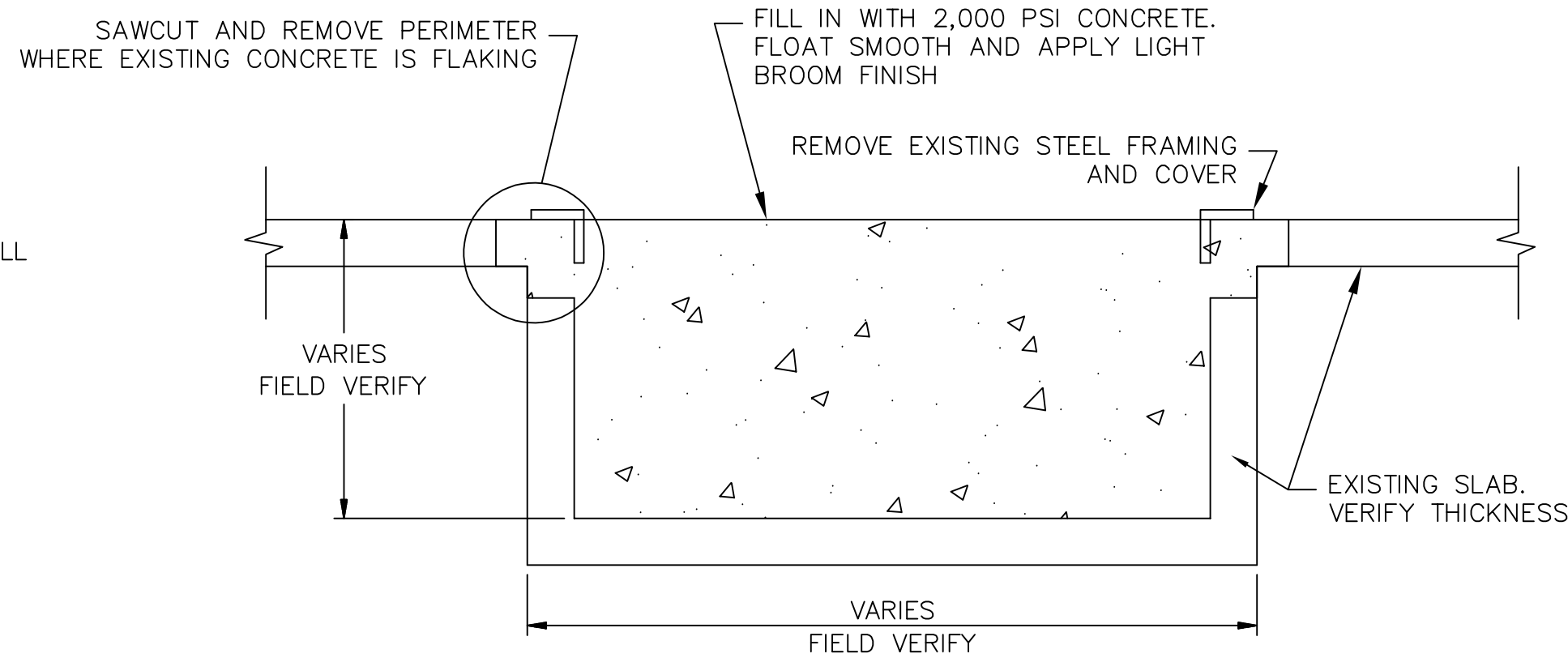


NOTE: DIMENSIONS ARE APPROXIMATE AND SHALL BE FIELD VERIFIED PRIOR TO FABRICATION.

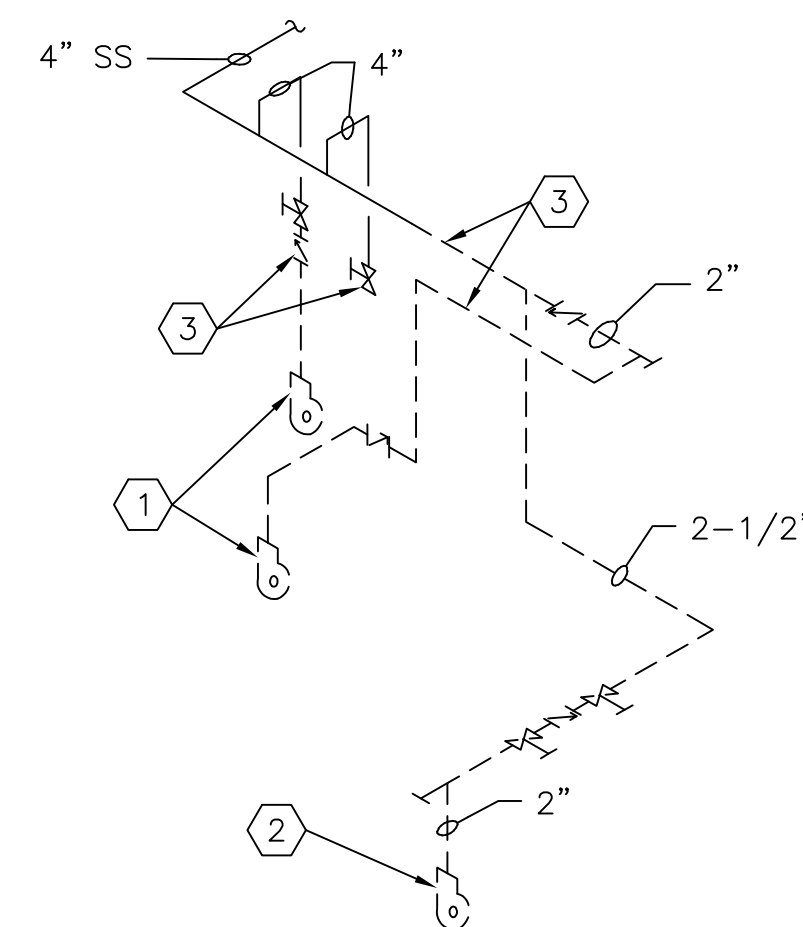
9 NEW DIVERTING VALVE W/ ELECTRONIC ACTUATOR  
M-301 SCALE: 1/2" = 1'-0"



10 CONDENSER PUMP PIPING DETAIL  
M-301 SCALE: NONE

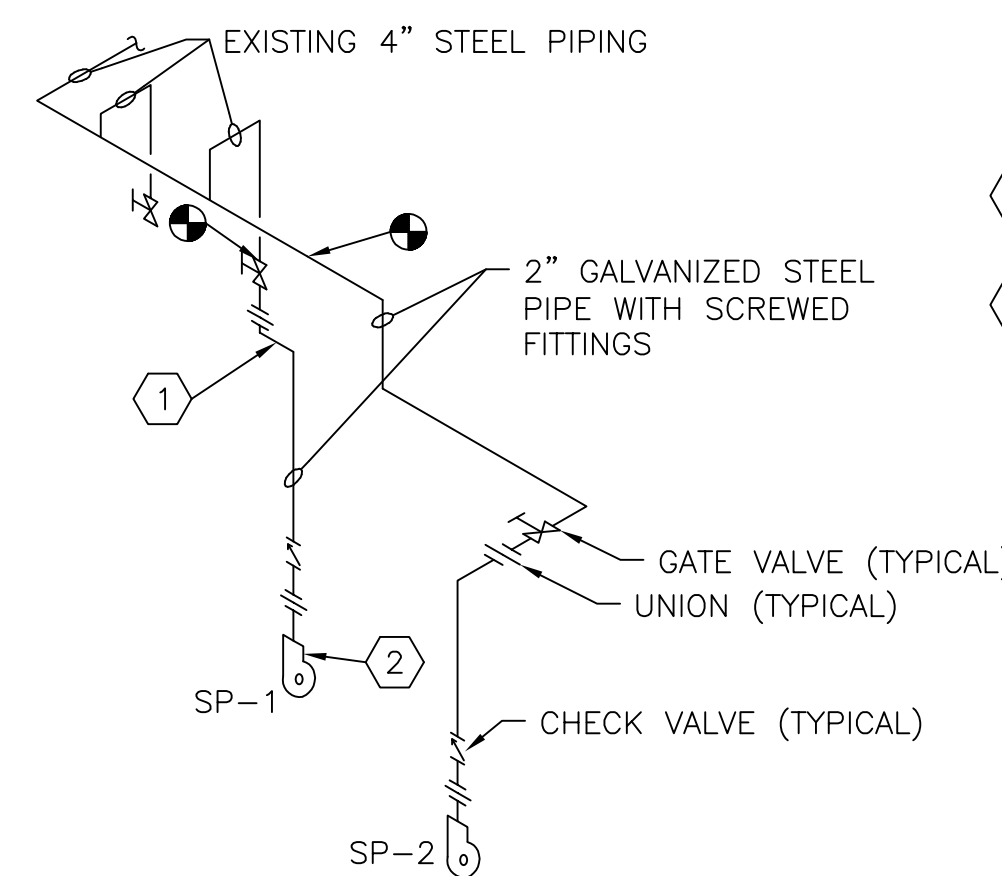


5 TYPICAL UTILITY TRENCH IN FILL  
M-301 SCALE: NONE



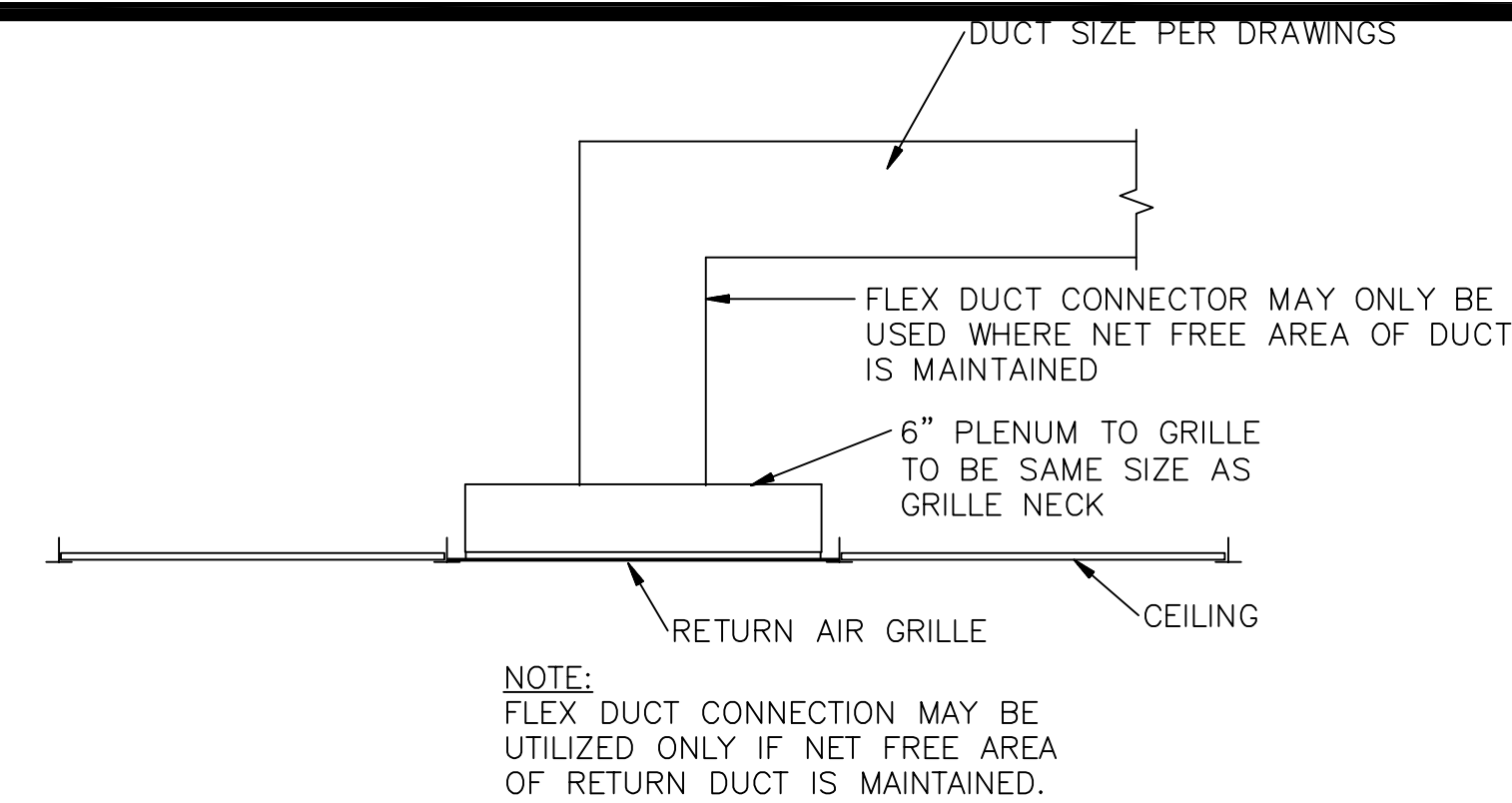
- KEYED NOTES
- 1 REMOVE ABANDONED SUBMERSIBLE SUMP PUMP
  - 2 REMOVE EXISTING SUBMERSIBLE SUMP PUMP FOR REPLACEMENT. PROVIDE TEMPORARY PUMP DURING DEMOLITION WORK
  - 3 REMOVE STEEL PIPING, VALVES, AND FITTINGS

6 DEMOLITION RISER DIAGRAM FOR 3 SUMP PUMPS AND PIPING  
M-301 SCALE: NONE

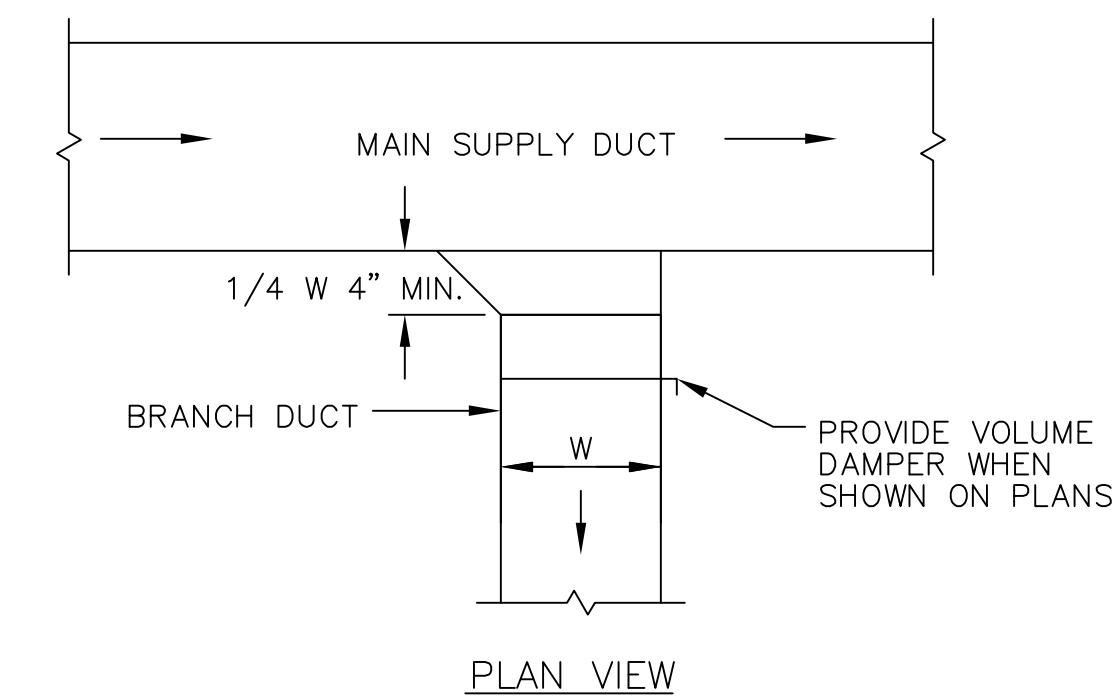


- KEYED NOTES:
- 1 OFFSET PIPING TO ALLOW FOR PUMP REMOVAL.
  - 2 THE ELEVATION OF SUBMERSIBLE SUMP PUMP SP-1 SHALL BE A MINIMUM OF 12" LOWER THAN THE ELEVATION OF SUBMERSIBLE SUMP PUMP SP-2

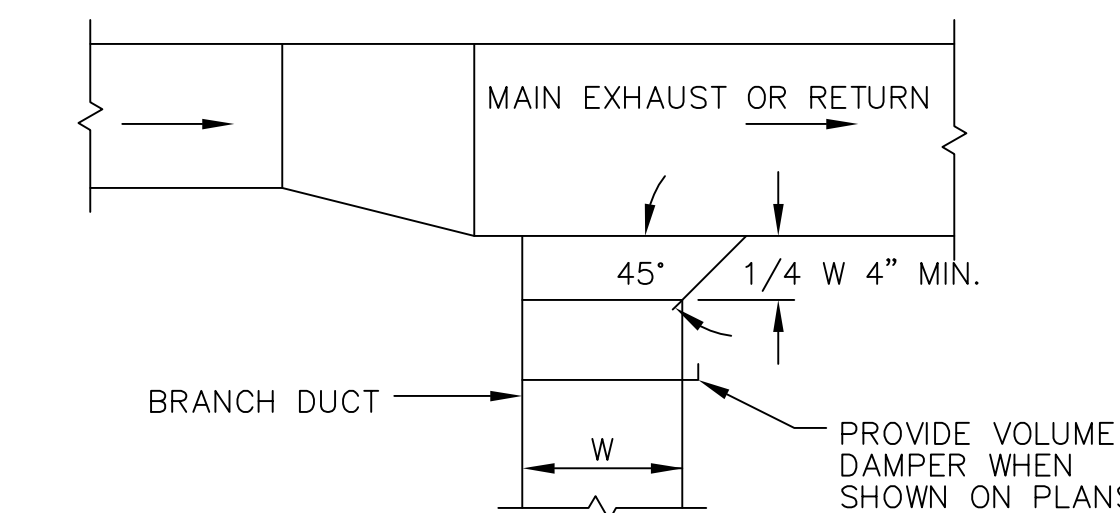
7 INSTALLATION RISER DIAGRAM FOR 2 NEW SUMP PUMPS  
M-301 SCALE: NONE



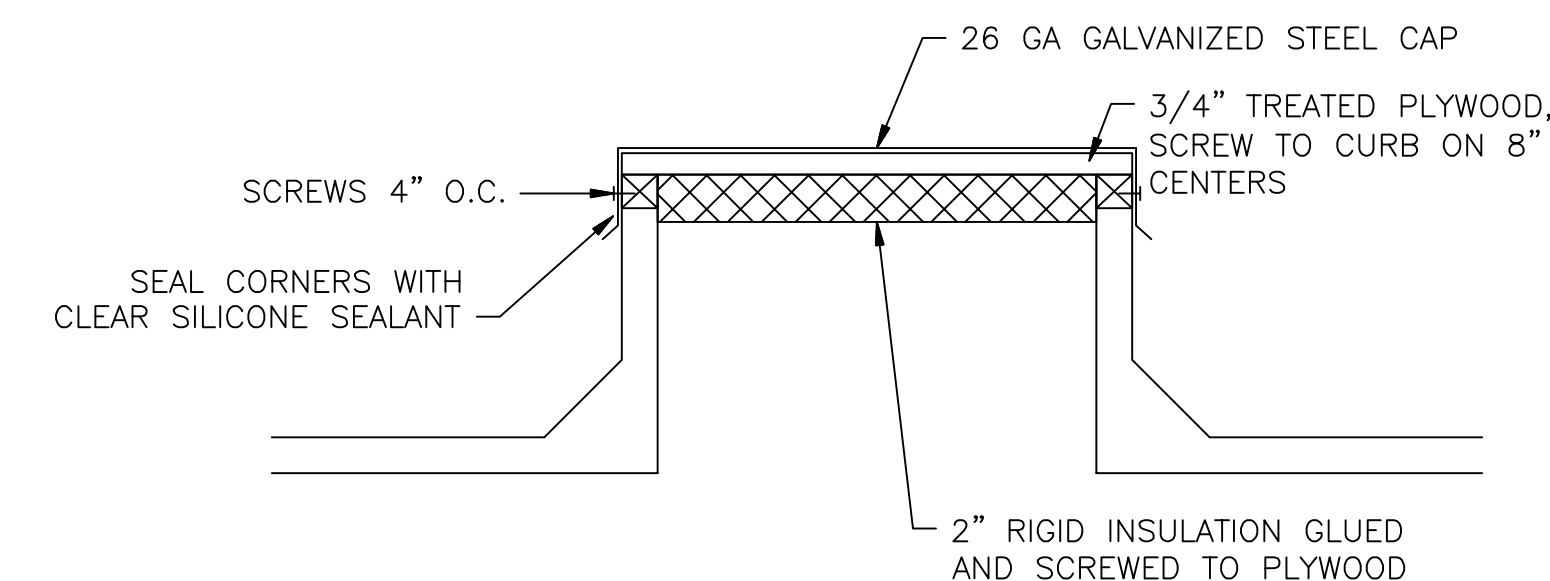
1 TYPICAL RETURN GRILLE CONNECTION  
M-301 SCALE: NONE



2 BRANCH DUCT TAKE-OFF  
M-301 SCALE: NONE



3 EXHAUST AND / OR RETURN BRANCH DUCT  
M-301 SCALE: NONE



NOTE: FIELD VERIFY DIMENSIONS.

4 CAPPED ROOF CURB DETAIL  
M-301 SCALE: NONE



LITTLE ROCK A.F.B.  
ARKANSAS

**GARVER ENGINEERS**

1010 BATTERY STREET  
LITTLE ROCK, ARKANSAS 72202  
www.garverengineers.com  
(501) 376-3633

**CROMWELL**  
ARCHITECTS ENGINEERS

101 SOUTH SPRING ST  
LITTLE ROCK AR 72201  
TELEPHONE 501-372-2900  
FACSIMILE 501-372-0482

No.	Revision/Issue	Date	BY	APP'D

PROJECT TITLE REPAIR & RENOVATE MEDICAL CLINIC PH IV LITTLE ROCK AIR FORCE BASE JACKSONVILLE, ARKANSAS 100% SUBMITTAL	MECHANICAL DETAILS	
	SHEET TITLE JCF	LEAD DESIGNER
	TECH REVIEWER JCF	PROJECT NUMBER NKAK#06-8006-4
	DESIGNED BY JCF	SHEET <b>M-301</b>
DATE JULY 11, 2008	33	
SCALE AS NOTED	OF	