

REVISIONS	DATE	DESCRIPTION	BY	APP'D
1	8/07/2005	ISSUED FOR FINAL WORK PLAN		
2	10/31/2003	ISSUED FOR FINAL WORK PLAN		
3	10/31/2003	ISSUED FOR FINAL WORK PLAN		
4	10/31/2003	ISSUED FOR FINAL WORK PLAN		
5	10/31/2003	ISSUED FOR FINAL WORK PLAN		
6	10/31/2003	ISSUED FOR FINAL WORK PLAN		
7	10/31/2003	ISSUED FOR FINAL WORK PLAN		
8	10/31/2003	ISSUED FOR FINAL WORK PLAN		
9	10/31/2003	ISSUED FOR FINAL WORK PLAN		
10	10/31/2003	ISSUED FOR FINAL WORK PLAN		
11	10/31/2003	ISSUED FOR FINAL WORK PLAN		
12	10/31/2003	ISSUED FOR FINAL WORK PLAN		
13	10/31/2003	ISSUED FOR FINAL WORK PLAN		
14	10/31/2003	ISSUED FOR FINAL WORK PLAN		
15	10/31/2003	ISSUED FOR FINAL WORK PLAN		
16	10/31/2003	ISSUED FOR FINAL WORK PLAN		
17	10/31/2003	ISSUED FOR FINAL WORK PLAN		
18	10/31/2003	ISSUED FOR FINAL WORK PLAN		
19	10/31/2003	ISSUED FOR FINAL WORK PLAN		
20	10/31/2003	ISSUED FOR FINAL WORK PLAN		
21	10/31/2003	ISSUED FOR FINAL WORK PLAN		
22	10/31/2003	ISSUED FOR FINAL WORK PLAN		
23	10/31/2003	ISSUED FOR FINAL WORK PLAN		
24	10/31/2003	ISSUED FOR FINAL WORK PLAN		
25	10/31/2003	ISSUED FOR FINAL WORK PLAN		
26	10/31/2003	ISSUED FOR FINAL WORK PLAN		
27	10/31/2003	ISSUED FOR FINAL WORK PLAN		
28	10/31/2003	ISSUED FOR FINAL WORK PLAN		
29	10/31/2003	ISSUED FOR FINAL WORK PLAN		
30	10/31/2003	ISSUED FOR FINAL WORK PLAN		
31	10/31/2003	ISSUED FOR FINAL WORK PLAN		
32	10/31/2003	ISSUED FOR FINAL WORK PLAN		
33	10/31/2003	ISSUED FOR FINAL WORK PLAN		
34	10/31/2003	ISSUED FOR FINAL WORK PLAN		
35	10/31/2003	ISSUED FOR FINAL WORK PLAN		
36	10/31/2003	ISSUED FOR FINAL WORK PLAN		
37	10/31/2003	ISSUED FOR FINAL WORK PLAN		
38	10/31/2003	ISSUED FOR FINAL WORK PLAN		
39	10/31/2003	ISSUED FOR FINAL WORK PLAN		
40	10/31/2003	ISSUED FOR FINAL WORK PLAN		
41	10/31/2003	ISSUED FOR FINAL WORK PLAN		
42	10/31/2003	ISSUED FOR FINAL WORK PLAN		
43	10/31/2003	ISSUED FOR FINAL WORK PLAN		
44	10/31/2003	ISSUED FOR FINAL WORK PLAN		
45	10/31/2003	ISSUED FOR FINAL WORK PLAN		
46	10/31/2003	ISSUED FOR FINAL WORK PLAN		
47	10/31/2003	ISSUED FOR FINAL WORK PLAN		
48	10/31/2003	ISSUED FOR FINAL WORK PLAN		
49	10/31/2003	ISSUED FOR FINAL WORK PLAN		
50	10/31/2003	ISSUED FOR FINAL WORK PLAN		
51	10/31/2003	ISSUED FOR FINAL WORK PLAN		
52	10/31/2003	ISSUED FOR FINAL WORK PLAN		
53	10/31/2003	ISSUED FOR FINAL WORK PLAN		
54	10/31/2003	ISSUED FOR FINAL WORK PLAN		
55	10/31/2003	ISSUED FOR FINAL WORK PLAN		
56	10/31/2003	ISSUED FOR FINAL WORK PLAN		
57	10/31/2003	ISSUED FOR FINAL WORK PLAN		
58	10/31/2003	ISSUED FOR FINAL WORK PLAN		
59	10/31/2003	ISSUED FOR FINAL WORK PLAN		
60	10/31/2003	ISSUED FOR FINAL WORK PLAN		
61	10/31/2003	ISSUED FOR FINAL WORK PLAN		
62	10/31/2003	ISSUED FOR FINAL WORK PLAN		
63	10/31/2003	ISSUED FOR FINAL WORK PLAN		
64	10/31/2003	ISSUED FOR FINAL WORK PLAN		
65	10/31/2003	ISSUED FOR FINAL WORK PLAN		
66	10/31/2003	ISSUED FOR FINAL WORK PLAN		
67	10/31/2003	ISSUED FOR FINAL WORK PLAN		
68	10/31/2003	ISSUED FOR FINAL WORK PLAN		
69	10/31/2003	ISSUED FOR FINAL WORK PLAN		
70	10/31/2003	ISSUED FOR FINAL WORK PLAN		
71	10/31/2003	ISSUED FOR FINAL WORK PLAN		
72	10/31/2003	ISSUED FOR FINAL WORK PLAN		
73	10/31/2003	ISSUED FOR FINAL WORK PLAN		
74	10/31/2003	ISSUED FOR FINAL WORK PLAN		
75	10/31/2003	ISSUED FOR FINAL WORK PLAN		
76	10/31/2003	ISSUED FOR FINAL WORK PLAN		
77	10/31/2003	ISSUED FOR FINAL WORK PLAN		
78	10/31/2003	ISSUED FOR FINAL WORK PLAN		
79	10/31/2003	ISSUED FOR FINAL WORK PLAN		
80	10/31/2003	ISSUED FOR FINAL WORK PLAN		
81	10/31/2003	ISSUED FOR FINAL WORK PLAN		
82	10/31/2003	ISSUED FOR FINAL WORK PLAN		
83	10/31/2003	ISSUED FOR FINAL WORK PLAN		
84	10/31/2003	ISSUED FOR FINAL WORK PLAN		
85	10/31/2003	ISSUED FOR FINAL WORK PLAN		
86	10/31/2003	ISSUED FOR FINAL WORK PLAN		
87	10/31/2003	ISSUED FOR FINAL WORK PLAN		
88	10/31/2003	ISSUED FOR FINAL WORK PLAN		
89	10/31/2003	ISSUED FOR FINAL WORK PLAN		
90	10/31/2003	ISSUED FOR FINAL WORK PLAN		
91	10/31/2003	ISSUED FOR FINAL WORK PLAN		
92	10/31/2003	ISSUED FOR FINAL WORK PLAN		
93	10/31/2003	ISSUED FOR FINAL WORK PLAN		
94	10/31/2003	ISSUED FOR FINAL WORK PLAN		
95	10/31/2003	ISSUED FOR FINAL WORK PLAN		
96	10/31/2003	ISSUED FOR FINAL WORK PLAN		
97	10/31/2003	ISSUED FOR FINAL WORK PLAN		
98	10/31/2003	ISSUED FOR FINAL WORK PLAN		
99	10/31/2003	ISSUED FOR FINAL WORK PLAN		
100	10/31/2003	ISSUED FOR FINAL WORK PLAN		

DESIGNED BY: DATE: 08/04/2003	PROJECT NO: 6503
DRAWN BY: C.S.	CHECKED BY: DRAWING CODE:
REVIEWED BY: SOLICITATION NUMBER:	

U.S. ARMY ENGINEERING AND SUPPORT CENTER
CORPS OF ENGINEERS
HUNTSVILLE, ALABAMA

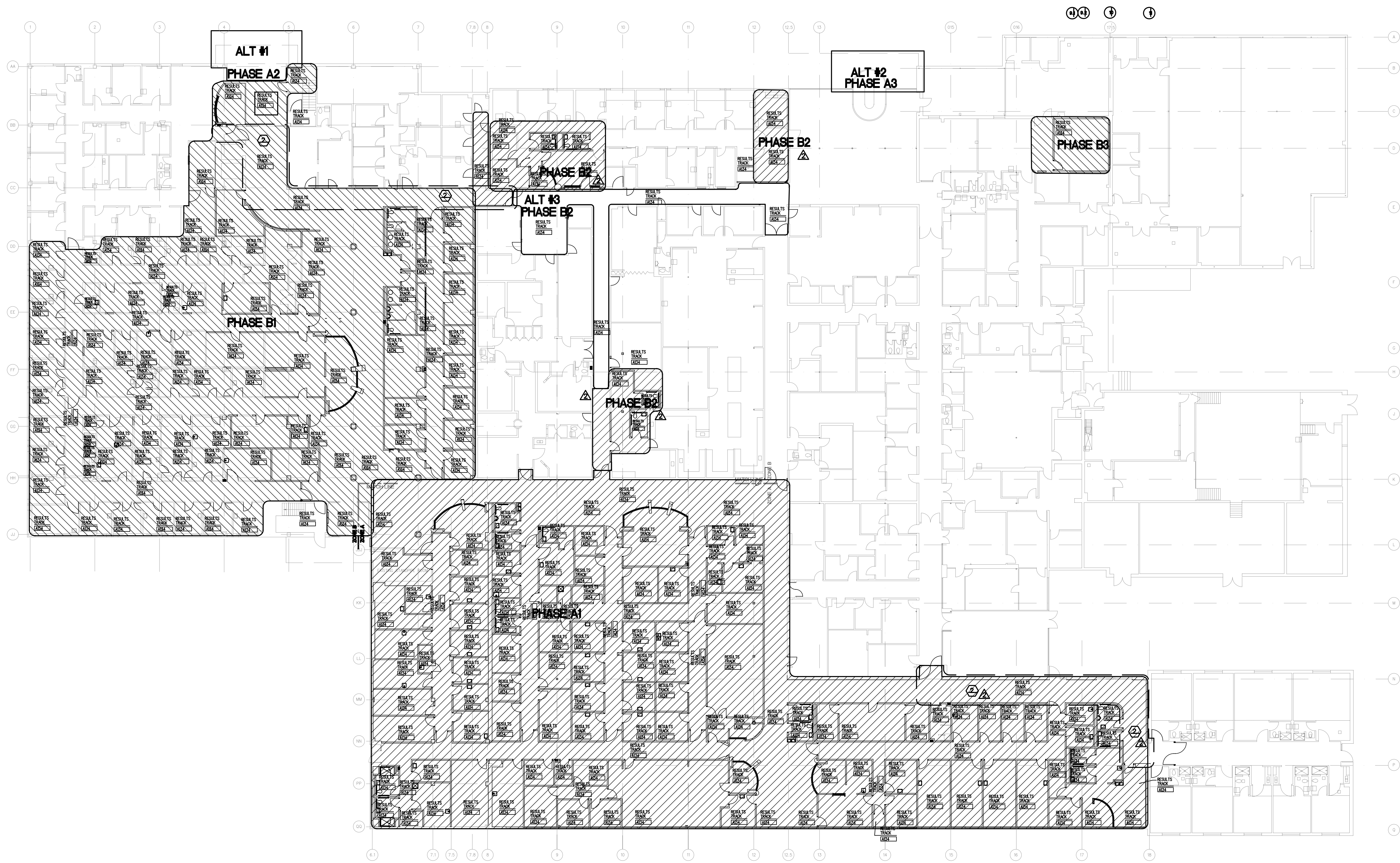
EARTHTECH
2002 Huntsville, AL 35894-0001

FLM
FLM Design

RENOVATE CLINIC
BUILDING 1090
LITTLE ROCK AFB, ARKANSAS

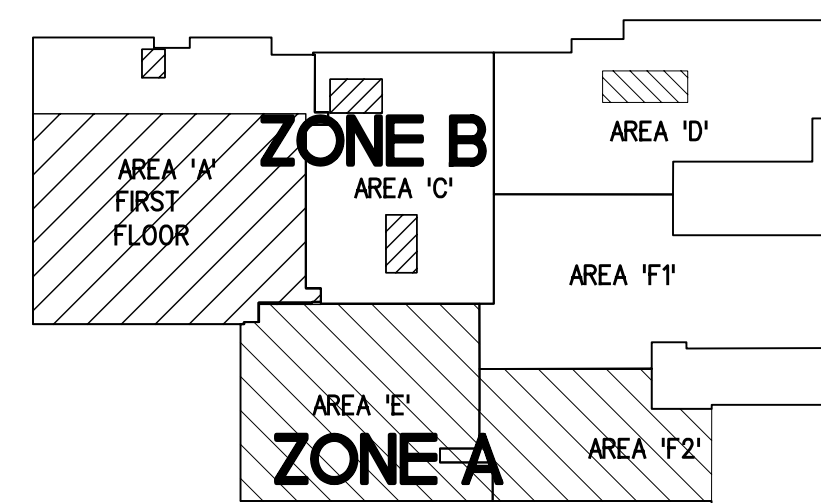
MECHANICAL PHASING PLAN
AS-BUILT

SHEET
REFERENCE
NUMBER:
M1.10
SHEET X OF XX



2 ZONE A AND B PLAN

SCALE 1/8" = 1'-0"



KEY PLAN
N.T.S.

SCALE