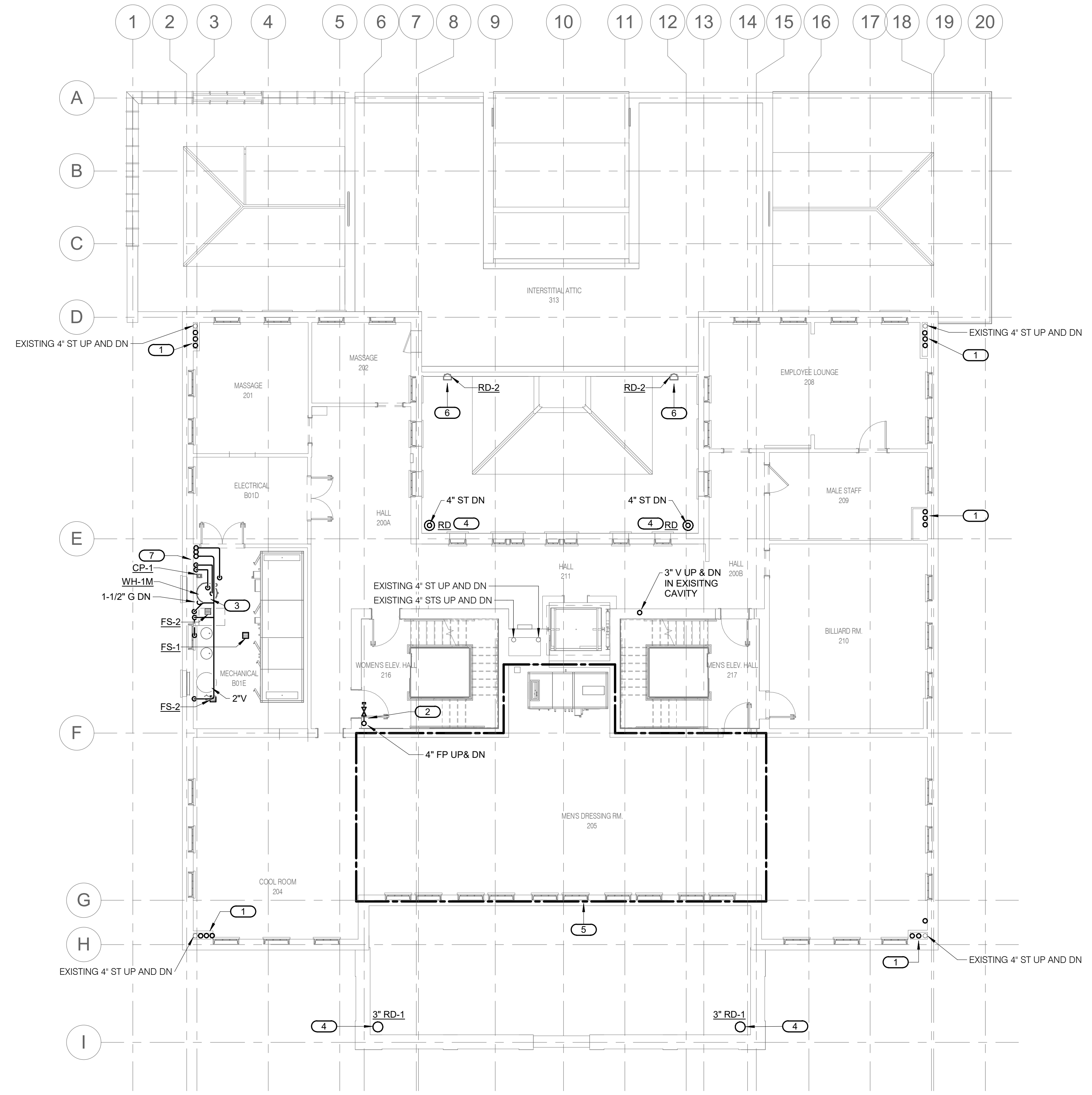


SHEET NOTES:

- ROUTING OF PLUMBING EQUIPMENT AND PIPING SHALL BE VERY CAREFULLY COORDINATED WITH EXISTING CONDITIONS, PRESERVATION ZONES, AND HISTORIC NATURE OF BUILDING TO CONFORM WITH THE SECRETARY OF THE INTERIOR'S REHABILITATION REQUIREMENTS AND PRESERVATION BRIEFS RELATED TO MEP DESIGN AND INSTALLATION.

KEYNOTES: #

- 4" SAN & 2" VENT UP & DN. 2" CW DN & 1-1/2" UP.
- FIRE PROTECTION RISER UP & DN. PROVIDE ISOLATION VALVE WITH TAMPER SWITCH & CAP FOR FUTURE SPRINKLER ZONE AND PIPING ON THIS FLOOR.
- HIGH EFFICIENCY GAS FIRED CONDENSING WATER HEATER AND CIRCULATING PUMP. SET ON 4" MIN. HIGH HOUSEKEEPING PAD.
- INSTALL NEW ROOF DRAINS AND CONNECT NEW STORM WATER PIPING ROUTED IN SAME LOCATION AS EXISTING. INSTALL NEW ROOF DRAIN IN EXISTING DRAIN LOCATION.
- NO PIPING MAY PENETRATE THE SECOND FLOOR IN THIS AREA.
- NEW SCUPPER OVERFLOW DRAIN.
- 4" SAN & 2" VENT UP & DN. 2" CW DN AND 1-1/2" CW UP. 1" HW & 3/4" HWC DN.



1
P1.2 SECOND FLOOR PLUMBING PLAN
1/8" = 1'-0"
0 2 4 6 8 16 32
SCALE OF FEET



A/E FIRMS PRIME/ARCH: STRATA ARCHITECTURE 1703 OAK STREET, SUITE 100 KANSAS CITY, MO T: 816.474.0900 MEP/ENG: IMEG CORP. 1400 BALTIMORE STREET, SUITE 300 KANSAS CITY, MO T: 816.842.8437	DESIGNED: SGB	SUB SHEET NO. 01 P1.2	TITLE OF SHEET MAURICE BATHHOUSE SECOND FLOOR PLUMBING PLAN REHABILITATE BATHHOUSES HOT SPRINGS NATIONAL PARK	DRAWING NO. 626 180065
	CADD: WMM			PMIS/PKG NO. 318674
	TECH. REVIEW: SGB			SHEET 129 OF 286
	DATE: 10.27.2023			

10/27/2023 1:10:09 PM