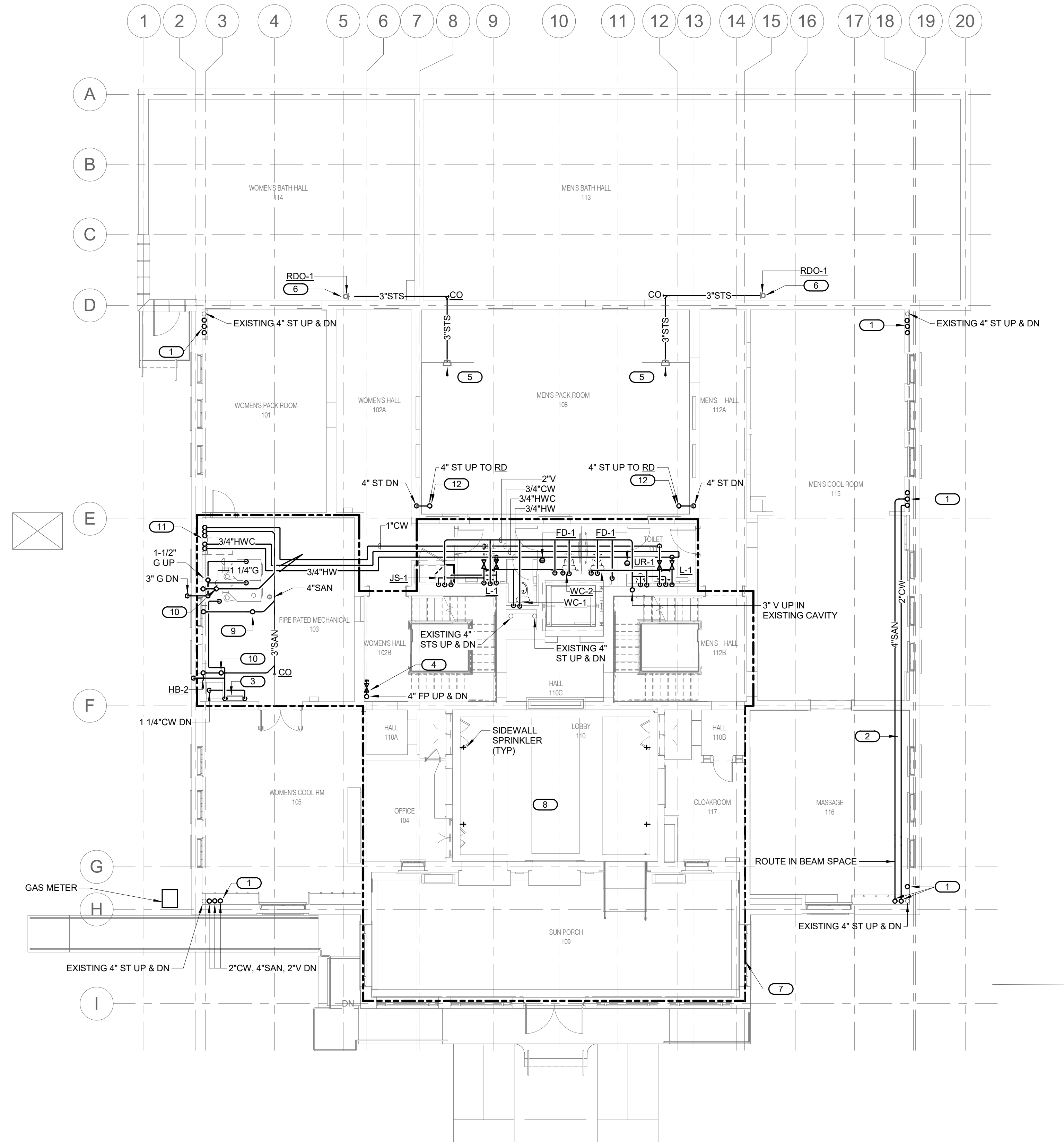


SHEET NOTES:

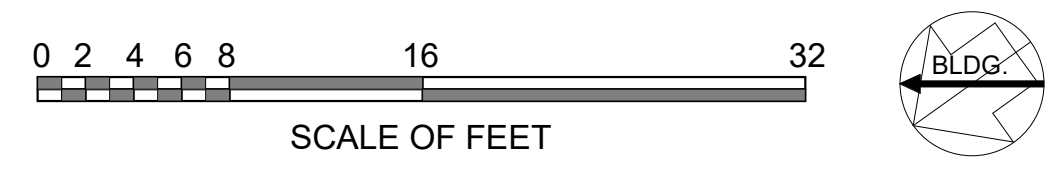
- ROUTING OF PLUMBING EQUIPMENT AND PIPING SHALL BE VERY CAREFULLY COORDINATED WITH EXISTING CONDITIONS, PRESERVATION ZONES, AND HISTORIC NATURE OF BUILDING TO CONFORM WITH THE SECRETARY OF THE INTERIOR'S REHABILITATION REQUIREMENTS AND PRESERVATION BRIEFS RELATED TO MEP DESIGN AND INSTALLATION.

KEYNOTES: #

- 4" SAN, 2" VENT & 2" CW RISERS UP & DN.
- ROUTE PIPING AS HIGH AS POSSIBLE.
- 1 1/4" BACKFLOW PREVENTER FOR BOILER MAKE-UP. CONNECT TO COLD WATER MAIN & HEATING WATER QUICK AND AUTO FILL SYSTEM.
- PROVIDE CAPPED ISOLATION VALVE WITH TAMPER SWITCH FOR FUTURE CONNECTION TO THE SPRINKLER SYSTEM THIS FLOOR.
- CONNECT TO SCUPPER OVERFLOW DRAIN IN ROOF ABOVE. ROUTE THROUGH SIDE WALL.
- TERMINATE STS PIPING WITH LAMB'S TONGUE TO DISCHARGE TO LOWER ROOF.
- INSTALL FIRE SUPPRESSION SPRINKLER SYSTEM IN THIS AREA. CAP AND FILL WITH NITROGEN. PROVIDE CAPPED BRANCH MAIN(S) TO SERVE REMAINDER OF FLOOR.
- SUPPLY LOBBY WITH SIDEWALL SPRINKLERS. TWO SPRINKLERS EACH WILL BE LOCATED ON PLAN WEST AND PLAN EAST SIDES OF LOBBY, BEING LOCATED 4.5 FEET AWAY FROM PLAN NORTH AND PLAN SOUTH WALLS AS SHOWN. COORDINATE WITH EXISTING BEAMS & EXACT LOCATION WITH C.O.
- 4" SAN DN FROM FIXTURE ABOVE.
- 3" SAN DN FROM FIXTURE ABOVE.
- 4" SAN, 2" VENT & 2" CW RISERS UP & DN. 1" HW & 3/4" HWC UP.
- ROUTE NEW PIPING AND RISERS IN SAME LOCATION AS THE EXISTING.



1
P1.1 FIRST FLOOR PLUMBING PLAN
1/8" = 1'-0"



A/E FIRMS PRIME/ARCH: STRATA ARCHITECTURE 1703 OAK STREET, SUITE 100 KANSAS CITY, MO T: 816.474.0900 MEP/ENG: IMEG CORP. 1400 BALTIMORE STREET, SUITE 300 KANSAS CITY, MO T: 816.842.8437	DESIGNED: SGB	SUB SHEET NO. 01 P1.1	TITLE OF SHEET MAURICE BATHHOUSE FIRST FLOOR PLUMBING PLAN REHABILITATE BATHHOUSES HOT SPRINGS NATIONAL PARK	DRAWING NO. 626 180065
	CADD: WMM	SHEET 128 OF 286		
	TECH. REVIEW: SGB			PMIS/PKG NO. 318674
	DATE: 10.27.2023			DATE 10.27.2023

10/27/2023 1:10:07 PM