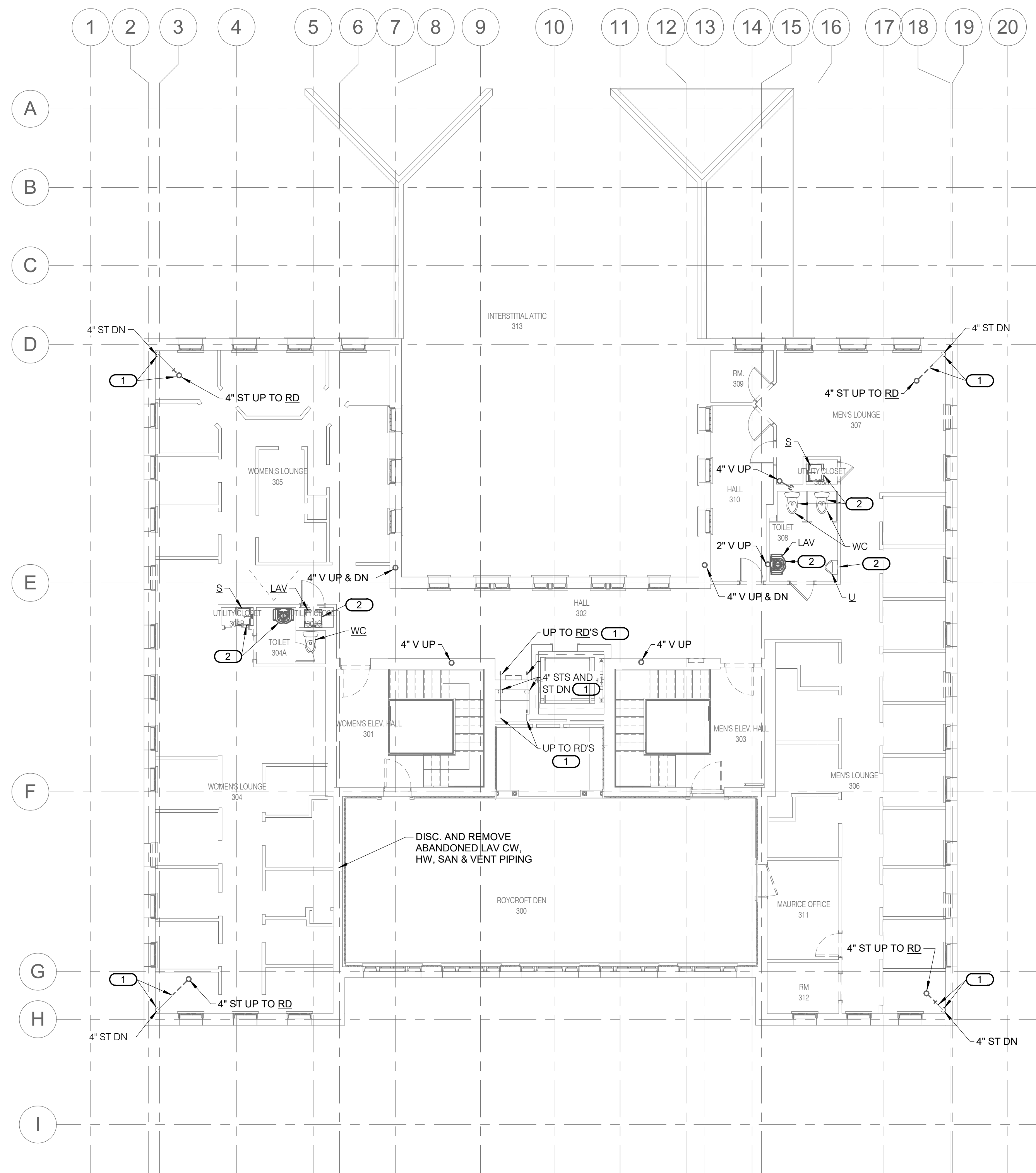
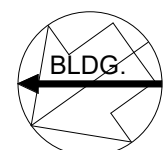
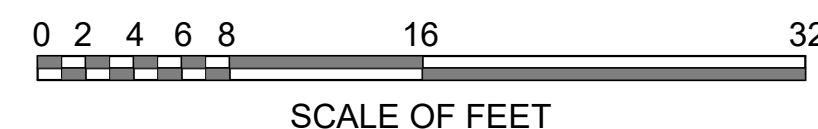


- SHEET NOTES:**
1. ALL DARK AND DASHED FIXTURES, EQUIPMENT, PIPING AND ASSOCIATED SUPPORTS ARE TO BE REMOVED IN ITS ENTIRETY AND EXISTING PENETRATIONS PATCHED. PIPING SHOWN LIGHTLY IS TO REMAIN.
 2. DISCONNECT AND REMOVE ALL EXISTING PIPING AND EQUIPMENT UNLESS NOTED OTHERWISE.

- KEYNOTES: #**
1. EXISTING TO REMAIN.
 2. DISCONNECT AND REMOVE EXISTING PLUMBING FIXTURE AND ASSOCIATED REMAINING PIPING AND SUPPORTS. CO RESERVES FIRST RIGHT OF REFUSAL.



1
PX1.3 THIRD FLOOR PLUMBING DEMOLITION PLAN
1/8" = 1'-0"



A/E FIRMS PRIME/ARCH: STRATA ARCHITECTURE 1703 OAK STREET, SUITE 100 KANSAS CITY, MO T: 816.474.0900 MEP/ENG: IMEG CORP. 1400 BALTIMORE STREET, SUITE 300 KANSAS CITY, MO T: 816.842.8437	DESIGNED: SGB	SUB SHEET NO. 01 PX1.3	TITLE OF SHEET MAURICE BATHHOUSE THIRD FLOOR PLUMBING DEMOLITION PLAN REHABILITATE BATHHOUSES HOT SPRINGS NATIONAL PARK	DRAWING NO. 626 180065
	CADD: WMM	DATE: 10.27.2023		PMIS/PKG NO. 318674
	TECH. REVIEW: SGB			SHEET 125 OF 286

10/27/2023 11:53 AM