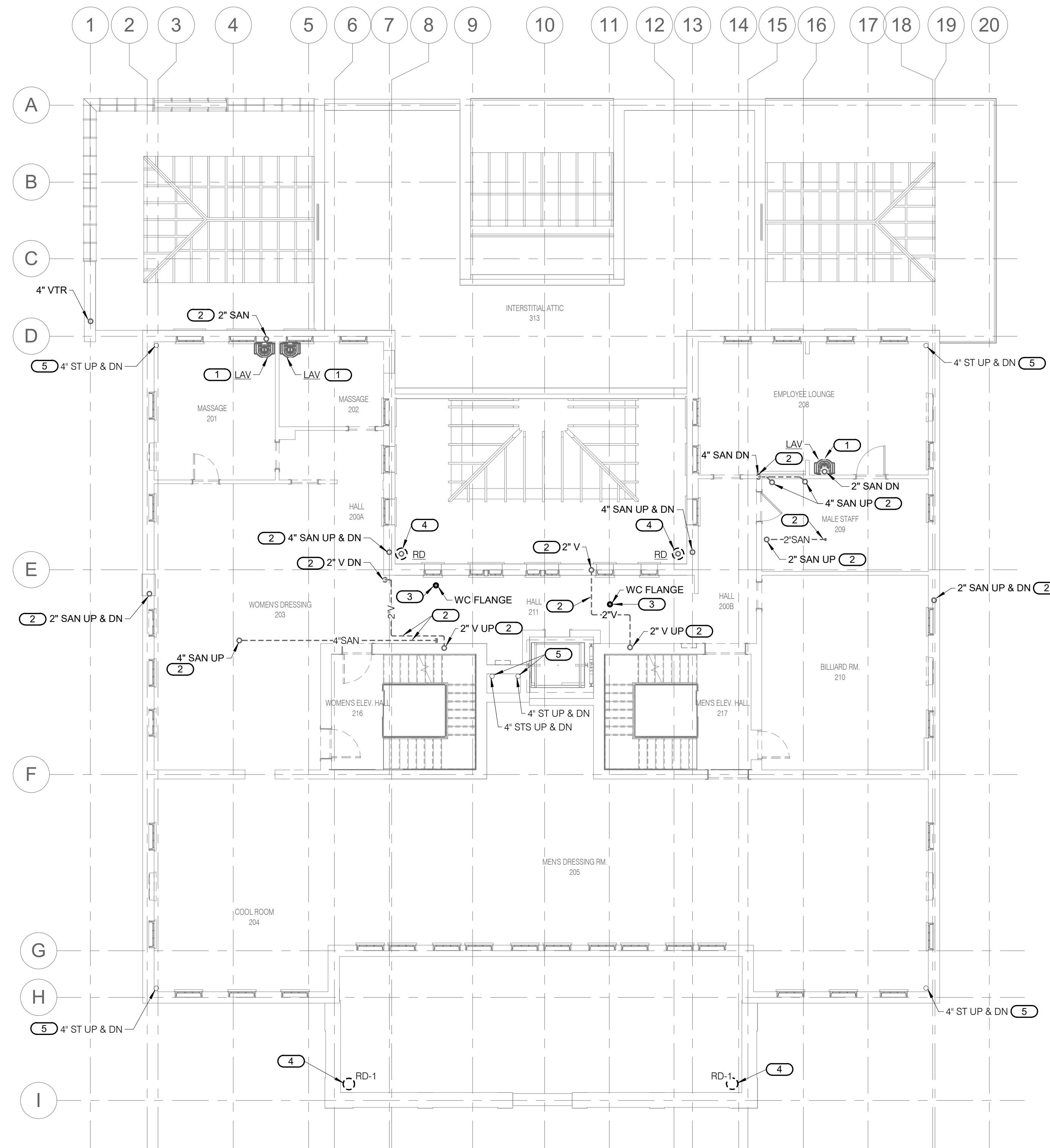


- SHEET NOTES:**
1. ALL DARK AND DASHED FIXTURES, EQUIPMENT, PIPING AND ASSOCIATED SUPPORTS ARE TO BE REMOVED IN ITS ENTIRETY AND EXISTING PENETRATIONS PATCHED. PIPING SHOWN LIGHTLY IS TO REMAIN.
 2. DISCONNECT AND REMOVE ALL EXISTING PIPING AND EQUIPMENT UNLESS NOTED OTHERWISE.

- KEYNOTES: #**
1. DISCONNECT AND REMOVE EXISTING PLUMBING FIXTURE AND ASSOCIATED REMAINING PIPING AND SUPPORTS. CO RESERVES FIRST RIGHT OF REFUSAL.
 2. DISCONNECT AND REMOVE EXISTING PIPING AND ASSOCIATED SUPPORTS.
 3. REMOVE EXISTING WATER CLOSET FLANGE AND PATCH FLOOR TO MATCH EXISTING.
 4. DISCONNECT AND REMOVE EXISTING ROOF DRAIN AS REQUIRED FOR ROOF REPLACEMENT.
 5. EXISTING TO REMAIN.



1 SECOND FLOOR PLUMBING DEMOLITION PLAN
 PX1.2 1/8" = 1'-0"
 0 2 4 6 8 16 32
 SCALE OF FEET



A/E FIRMS PRIME/ARCH: STRATA ARCHITECTURE 1703 OAK STREET, SUITE 100 KANSAS CITY, MO T: 816.474.0900 MEP/ENG: IMEG CORP. 1400 BALTIMORE STREET, SUITE 300 KANSAS CITY, MO T: 816.842.8437	DESIGNED: SGB	SUB SHEET NO. 01 PX1.2	TITLE OF SHEET MAURICE BATHHOUSE SECOND FLOOR PLUMBING DEMOLITION PLAN REHABILITATE BATHHOUSES HOT SPRINGS NATIONAL PARK	DRAWING NO. 626 180065
	CADD: WMM			PMIS/PKG NO. 318674
	TECH. REVIEW: SGB			SHEET 124 OF 286
	DATE: 10.27.2023			

10/27/2023 11:52 AM