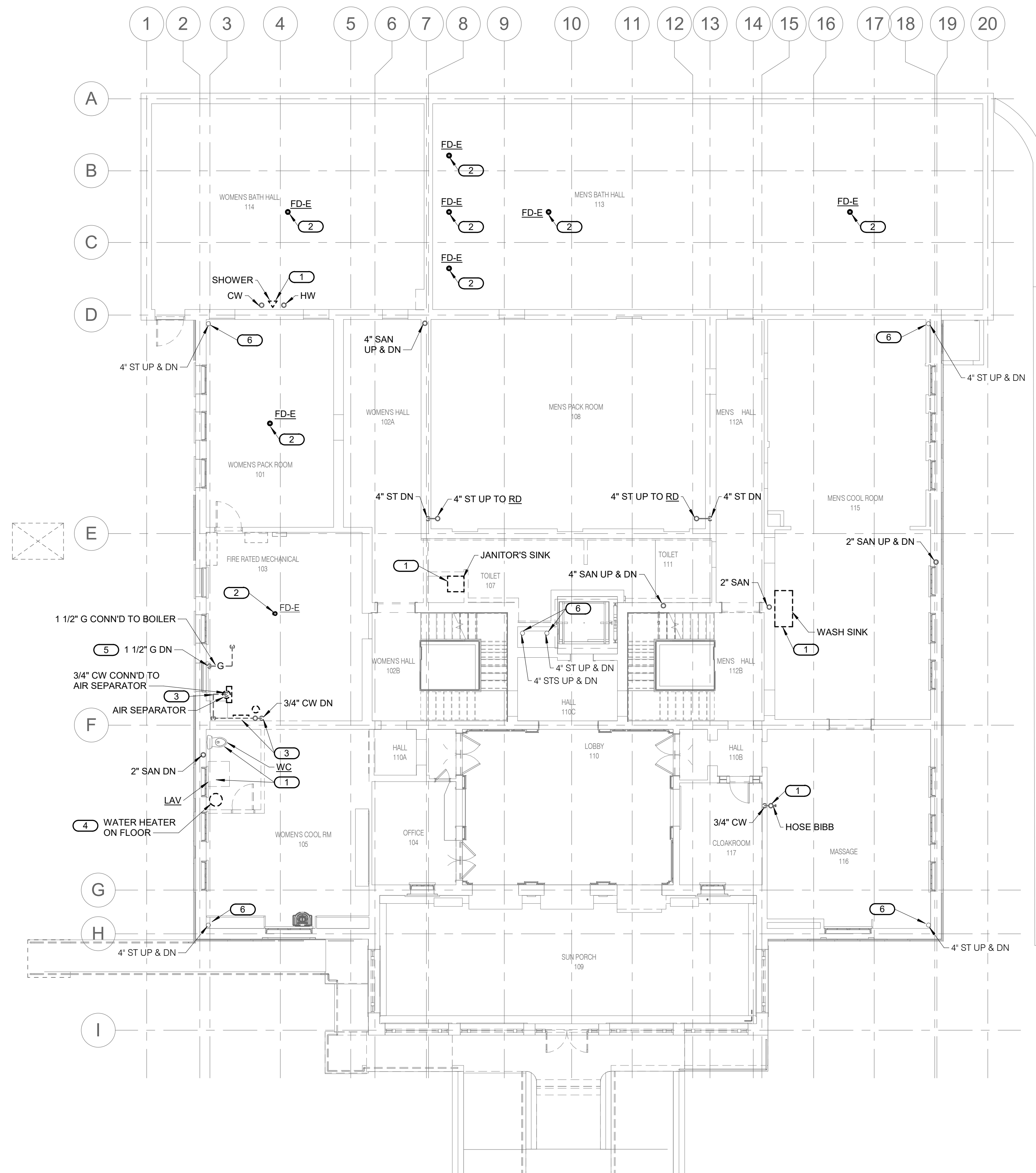


- SHEET NOTES:**
1. ALL DARK AND DASHED FIXTURES, EQUIPMENT, PIPING AND ASSOCIATED SUPPORTS ARE TO BE REMOVED IN ITS ENTIRETY AND EXISTING PENETRATIONS PATCHED. PIPING SHOWN LIGHTLY IS TO REMAIN.
 2. DISCONNECT AND REMOVE ALL EXISTING PIPING AND EQUIPMENT UNLESS NOTED OTHERWISE.

- KEYNOTES: #**
1. DISCONNECT AND REMOVE EXISTING PLUMBING FIXTURE AND ASSOCIATED REMAINING PIPING TO SOURCE AND SUPPORTS. COR RESERVES FIRST RIGHT OF REFUSAL.
 2. DISCONNECT AND REMOVE EXISTING FLOOR DRAIN BODY AND PATCH FLOOR TO MATCH EXISTING.
 3. DISCONNECT AND REMOVE EXISTING 3/4" BACKFLOW PREVENTER, HEATING WATER SYSTEM MAKEUP WATER ASSEMBLY AND ASSOCIATED PIPING.
 4. DISCONNECT AND REMOVE EXISTING WATER HEATER AND ASSOCIATED PIPING.
 5. DISCONNECT AND REMOVE EXISTING GAS SERVICE TO BOILER.
 6. EXISTING TO REMAIN.



1 FIRST FLOOR PLUMBING DEMOLITION PLAN
PX1.1 1/8" = 1'-0"
 0 2 4 6 8 16 32
 SCALE OF FEET



A/E FIRMS PRIME/ARCH: STRATA ARCHITECTURE 1703 OAK STREET, SUITE 100 KANSAS CITY, MO T: 816.449.0900 ME/ENGS: IMEG CORP. 1400 BALTIMORE STREET, SUITE 300 KANSAS CITY, MO T: 816.842.8437	DESIGNED: SGB	SUB SHEET NO. 01 PX1.1	TITLE OF SHEET MAURICE BATHHOUSE FIRST FLOOR PLUMBING DEMOLITION PLAN REHABILITATE BATHHOUSES HOT SPRINGS NATIONAL PARK	DRAWING NO. 626 180065
	CADD: WMM			PMIS/PKG NO. 318674
	TECH. REVIEW: SGB			SHEET 123 OF 286
	DATE: 10.27.2023			

10/27/2023 11:52:01 AM