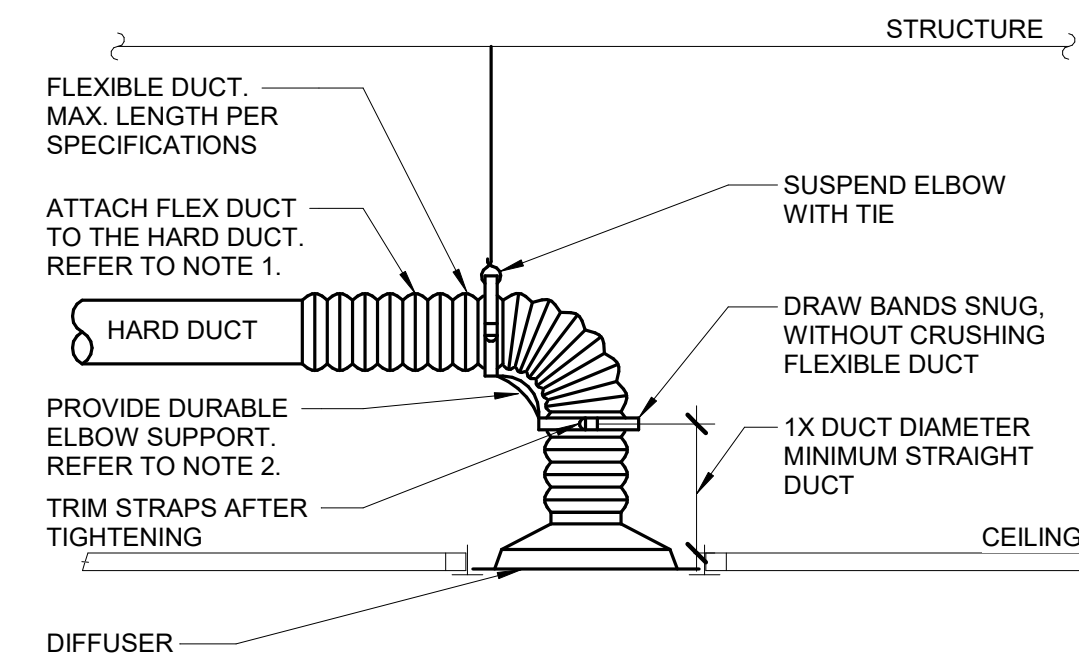


NOTES:

1. THIS DETAIL APPLIES TO ALL RETURN GRILLES WHERE BOOTS ARE SHOWN

1 AIR TERMINAL - CEILING RETURN SOUND BOOT

NO SCALE

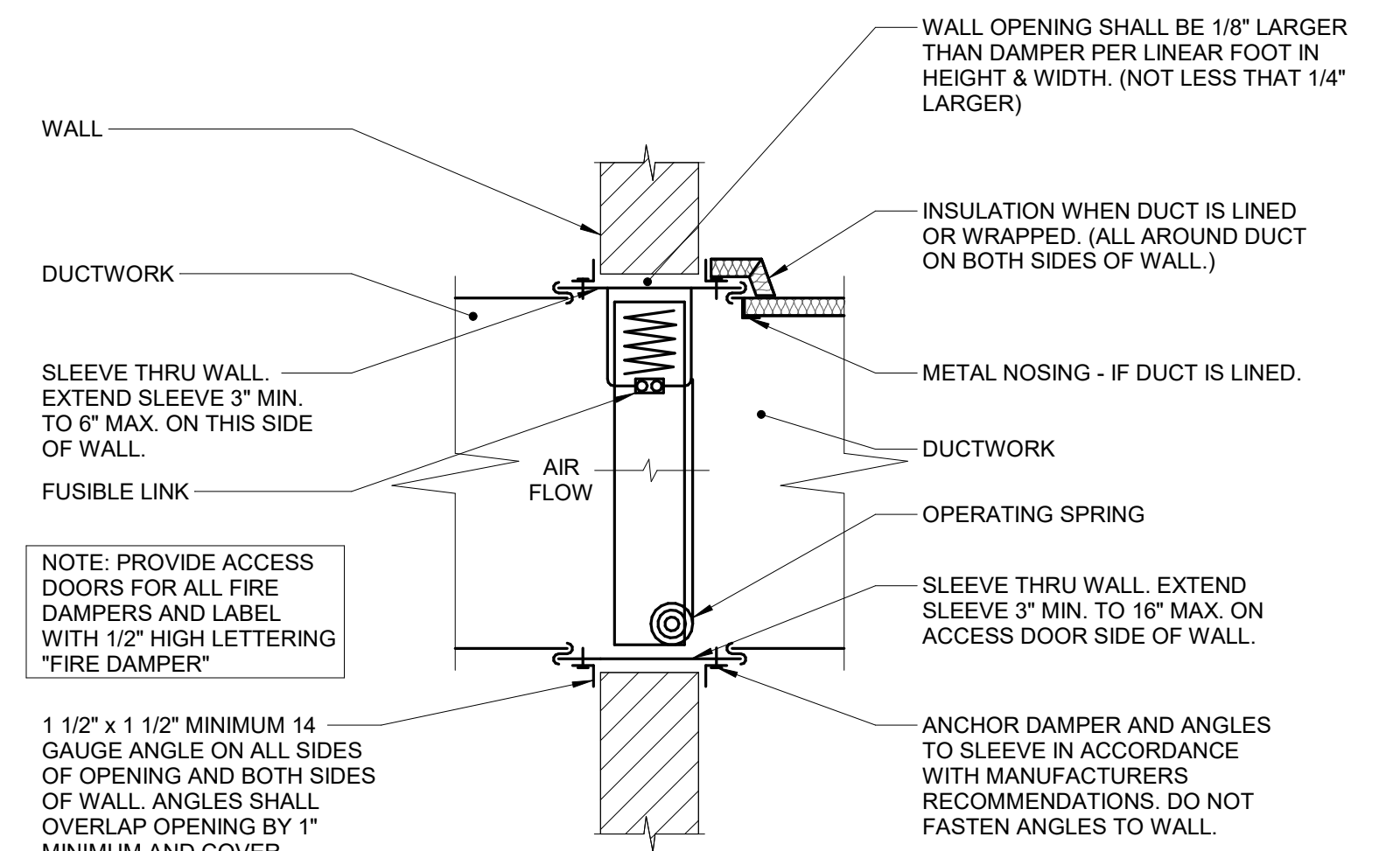


NOTES:

1. TO ATTACH FLEX DUCT TO THE HARD DUCT, TAPE THE INNER LINER TO THE HARD DUCT THEN ATTACH WITH TWO NYLON TIE WRAPS, ONE FOR THE INNER LINER AND ONE FOR THE OUTER SHELL. FOLD THE OUTER SHELL INSIDE ITSELF SO IT HAS NEAT EDGES PRIOR TO TIE WRAPPING.
2. DURABLE ELBOW SUPPORT ACCEPTABLE MANUFACTURER AND MODEL: HART AND COOLEY - SMARTFLOW, THERMAFLEX - FLEXFLOW, TITUS - FLEXRIGHT, OR APPROVED EQUAL.

2 DIFFUSER CONNECTION DETAIL (W/ RADIUS FORMING ELBOW)

NO SCALE



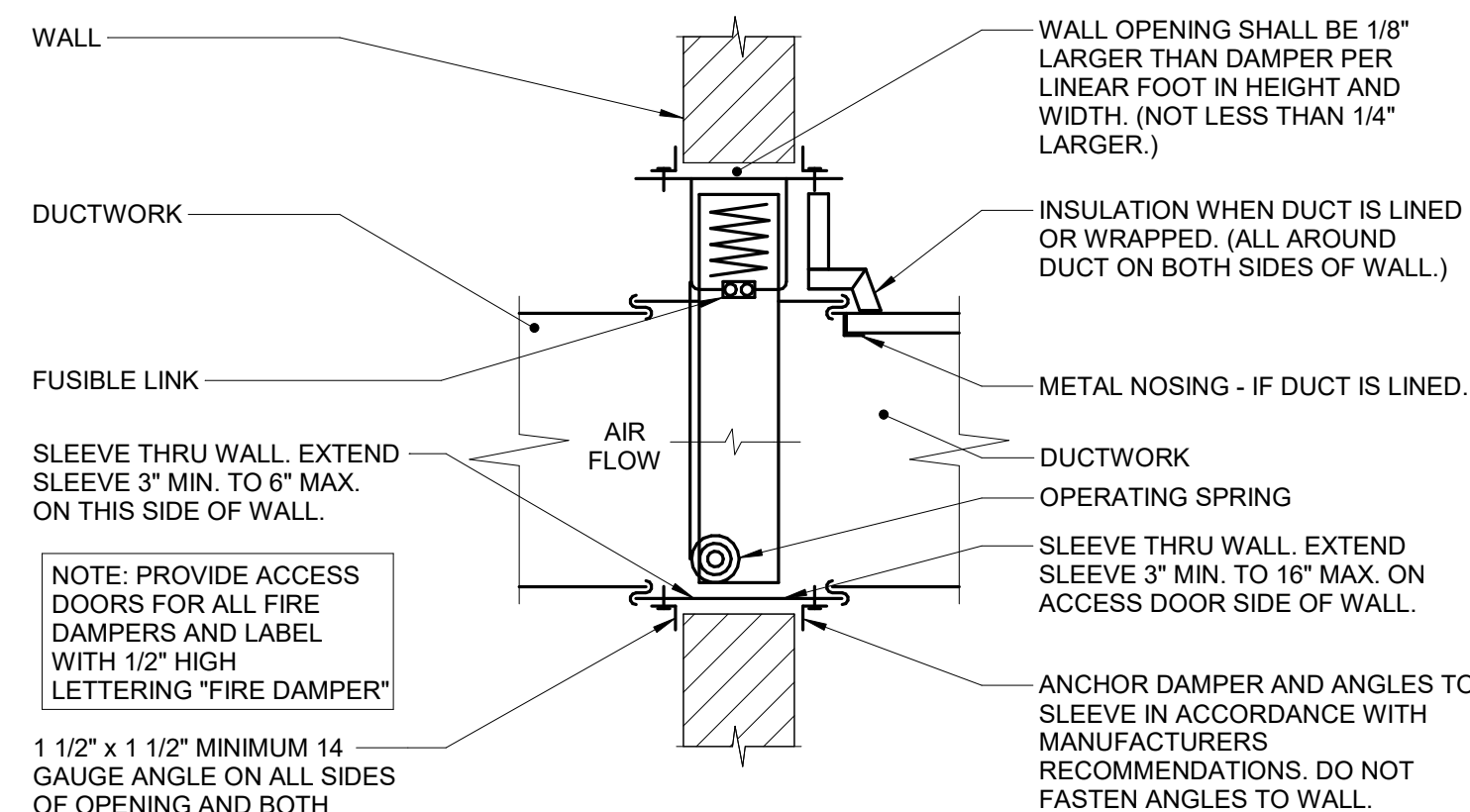
NOTE: PROVIDE ACCESS DOORS FOR ALL FIRE DAMPERS AND LABEL WITH 1/2\"/>

1 1/2" x 1 1/2" MINIMUM 14 GAUGE ANGLE ON ALL SIDES OF OPENING AND BOTH SIDES OF WALL. ANGLES SHALL OVERLAP OPENING BY 1" MINIMUM AND COVER CORNERS OF OPENING.

TYPE "A"

3 FIRE DAMPER - DYNAMIC WALL CURTAIN TYPE A

NO SCALE



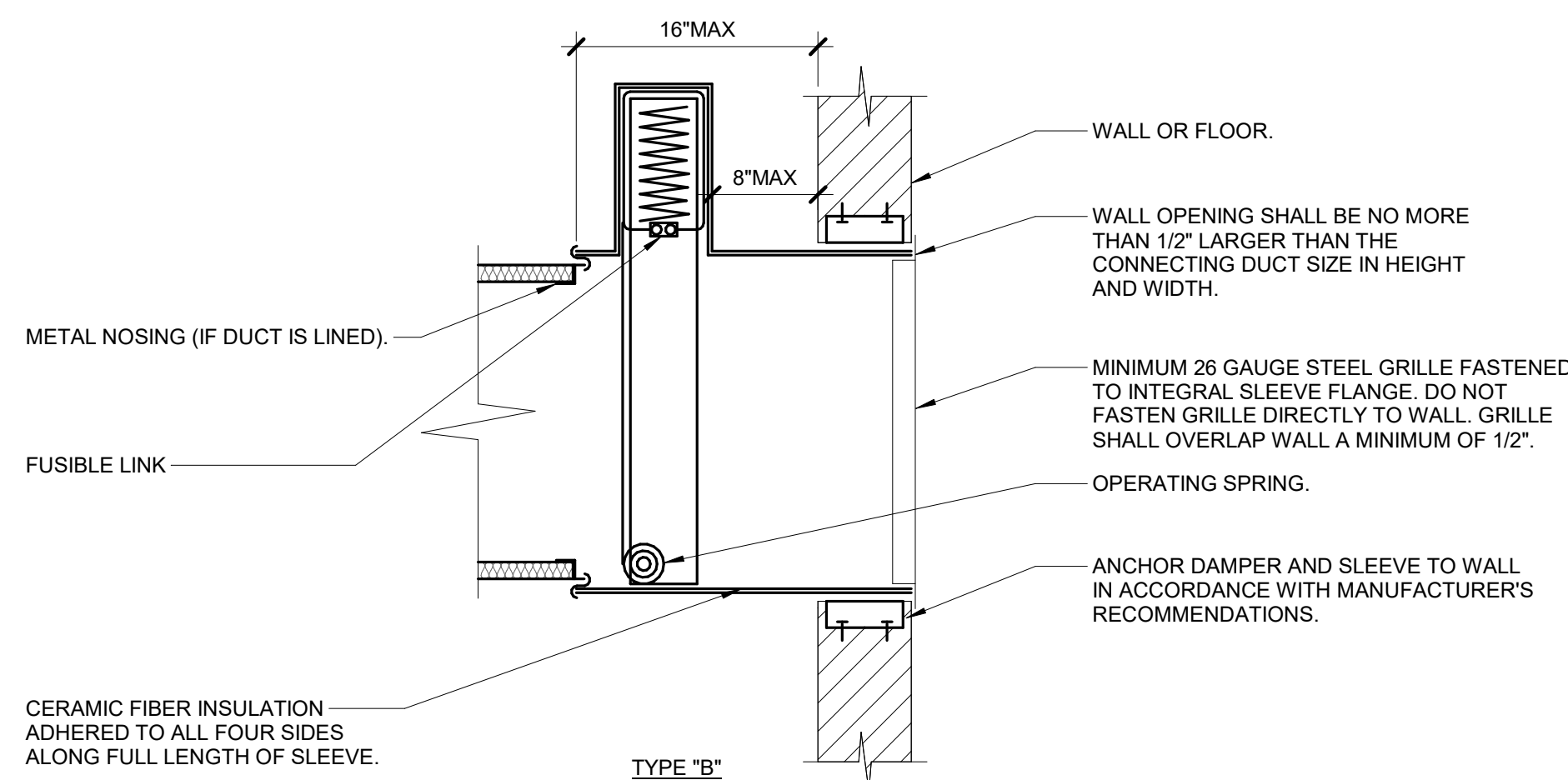
NOTE: PROVIDE ACCESS DOORS FOR ALL FIRE DAMPERS AND LABEL WITH 1/2\"/>

1 1/2" x 1 1/2" MINIMUM 14 GAUGE ANGLE ON ALL SIDES OF OPENING AND BOTH SIDES OF WALL. ANGLES SHALL OVERLAP OPENING BY 1" MINIMUM AND COVER CORNERS OF OPENING.

TYPE "B"

4 FIRE DAMPER - DYNAMIC WALL CURTAIN TYPE B

NO SCALE

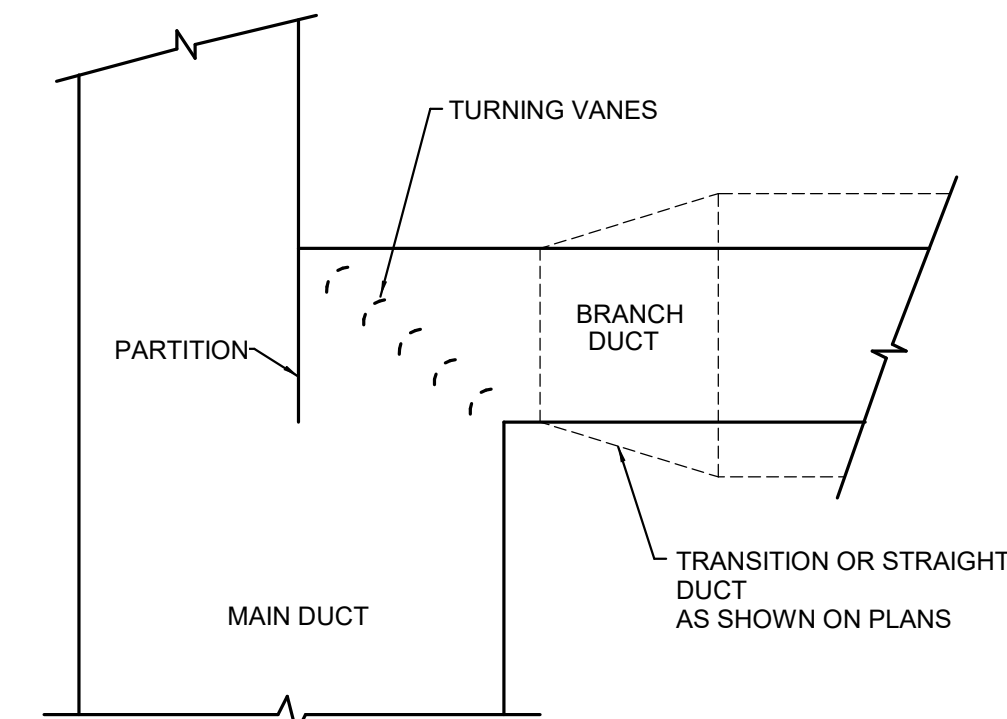


CERAMIC FIBER INSULATION ADHERED TO ALL FOUR SIDES ALONG FULL LENGTH OF SLEEVE.

TYPE "B"

5 FIRE DAMPER - DYNAMIC CURTAIN - WALL GRILLE

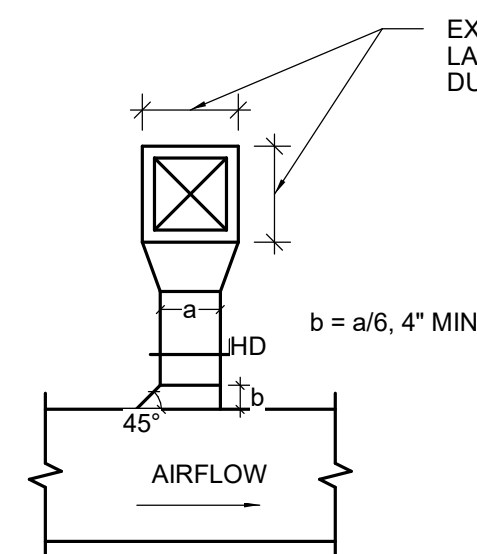
NO SCALE



TYPICAL DETAIL OF BRANCH CONNECTION FROM MAIN SUPPLY DUCT

6

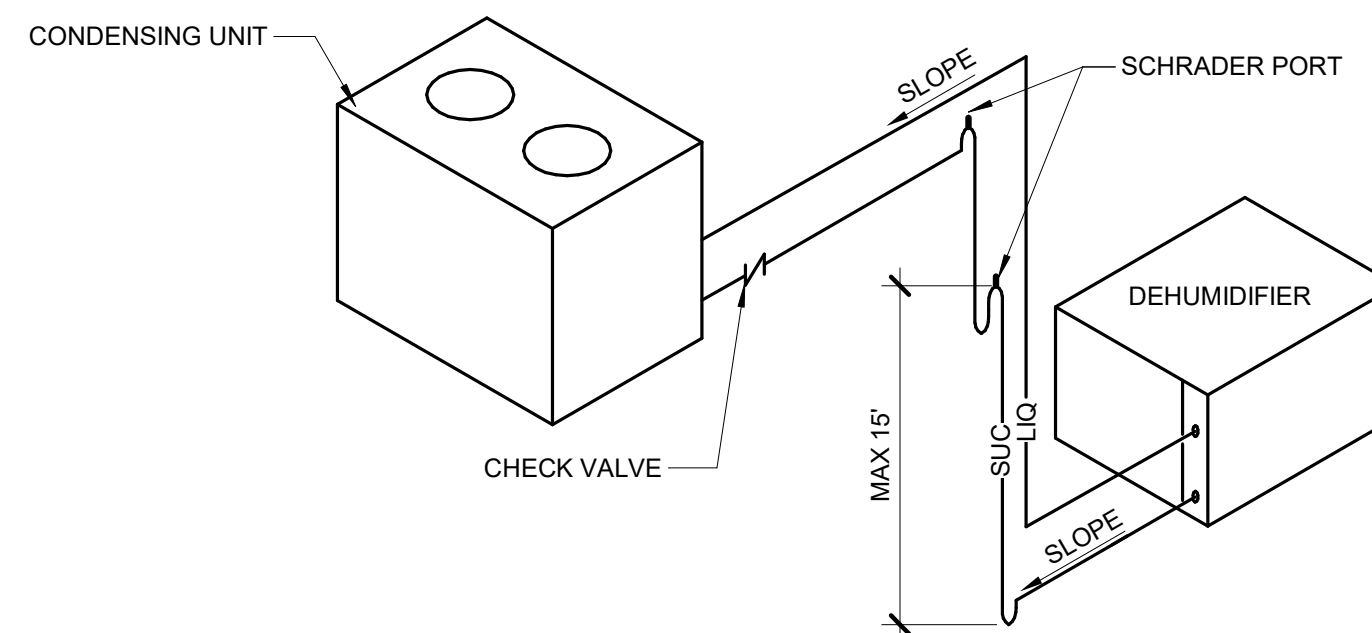
NO SCALE



TYPICAL DETAIL OF BRANCH TAKE OFF AND RECT. NECK DIFFUSER CONN.

7

NO SCALE



DEHUMIDIFIER WITH REMOTE CONDENSING UNIT SKETCH OF CONNECTIONS

8

NO SCALE



10.27.2023

A/E FIRMS PRIME/ARCH: STRATA ARCHITECTURE 1703 OAK STREET, SUITE 100 KANSAS CITY, MO T: 816.474.0900	DESIGNED: SGB	SUB SHEET NO. 01 M5.1	TITLE OF SHEET MAURICE BATHHOUSE MECHANICAL DETAILS	DRAWING NO. 626 180065
	CADD: WMM			PMIS/PKG NO. 318674
MEP/ENG: IMEG CORP. 1400 BALTIMORE STREET, SUITE 300 KANSAS CITY, MO T: 816.842.8437	TECH. REVIEW: SGB	DATE: 10.27.2023	REHABILITATE BATHHOUSES HOT SPRINGS NATIONAL PARK	SHEET 118 OF 286