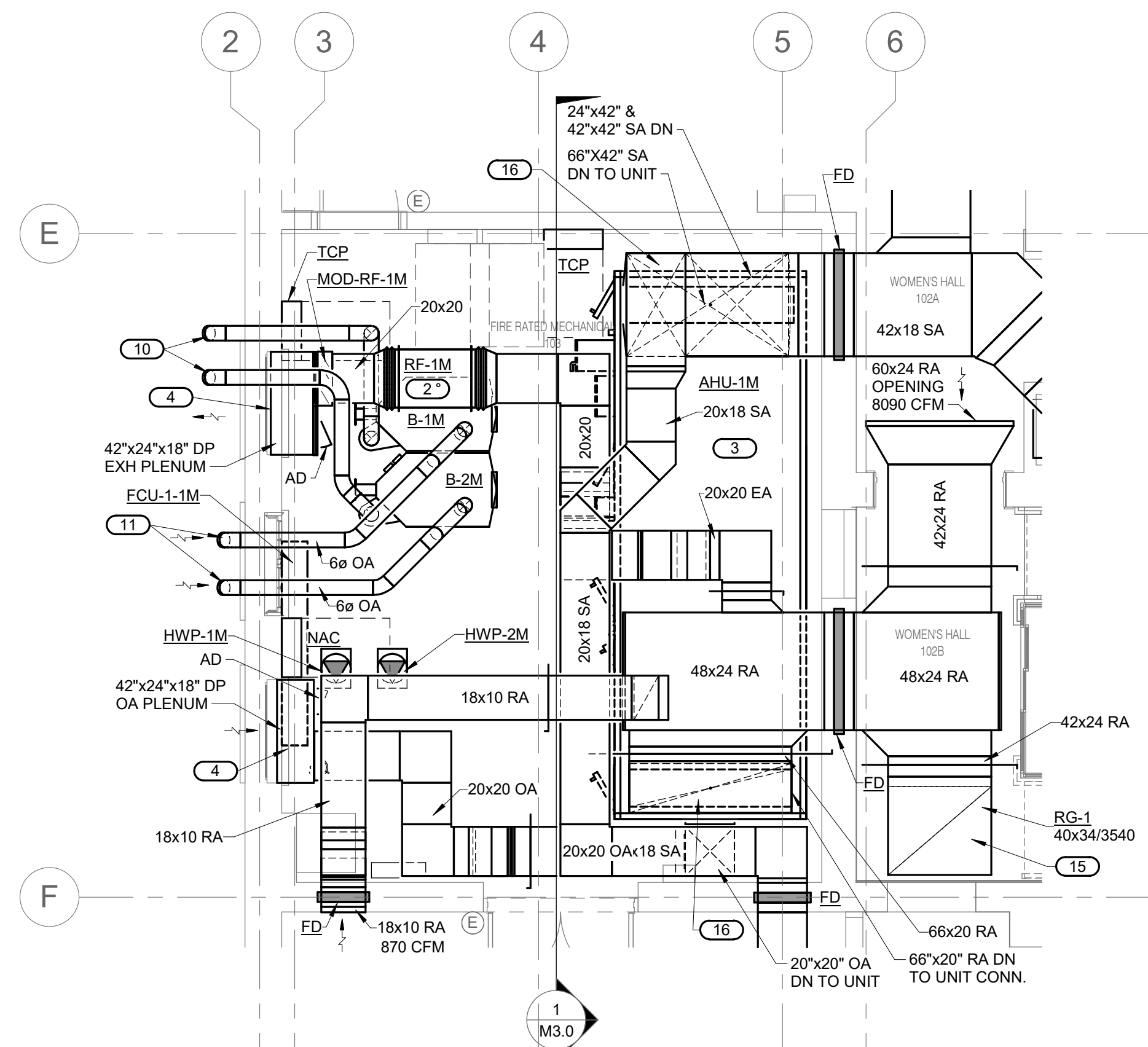


**SHEET NOTES:**

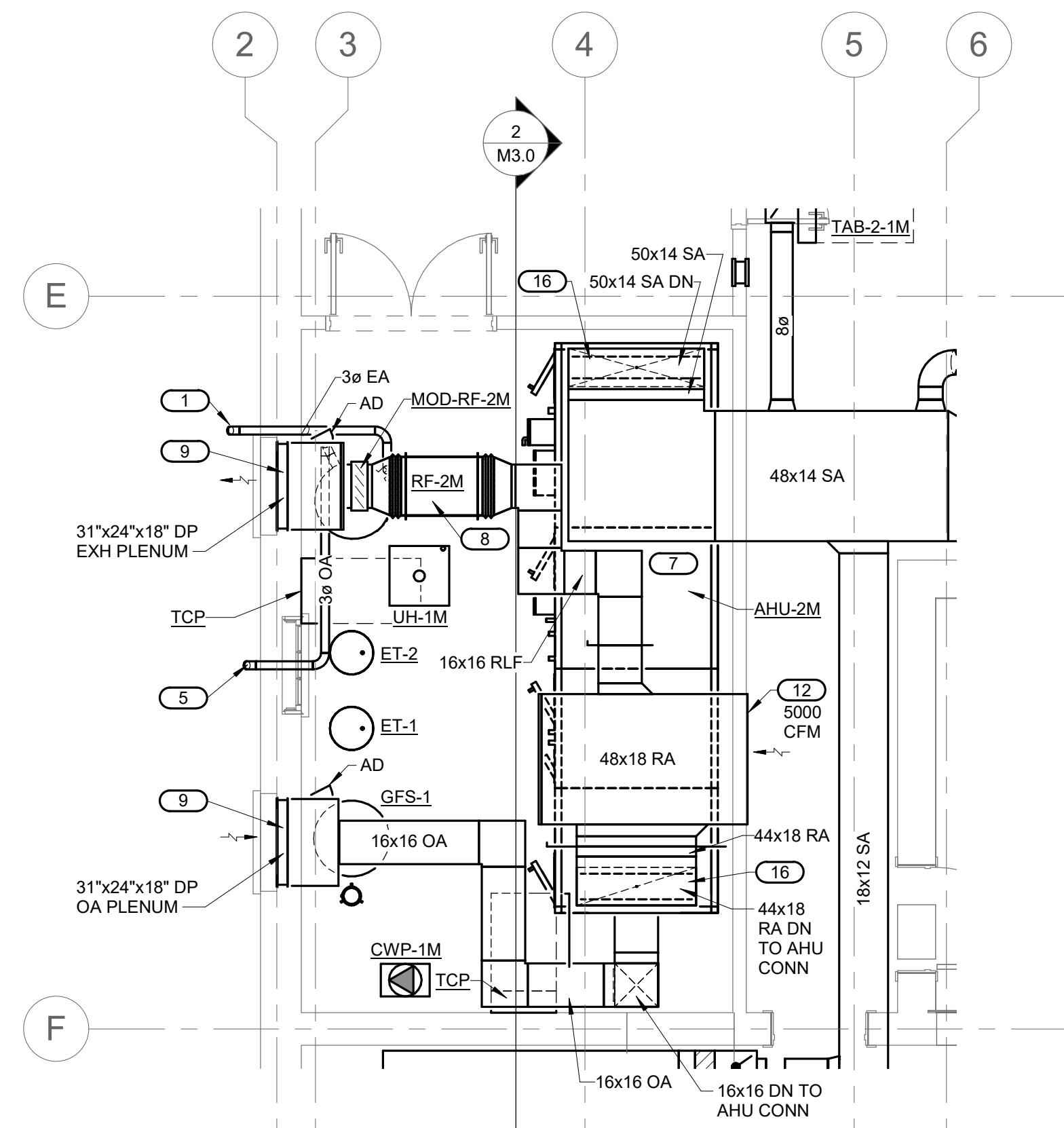
- ROUTING OF TERMINAL EQUIPMENT AND DUCTWORK SHALL BE VERY CAREFULLY COORDINATED WITH EXISTING CONDITIONS, PRESERVATION ZONES AND HISTORIC NATURE OF BUILDING TO CONFORM WITH THE SECRETARY OF THE INTERIOR'S REHABILITATION REQUIREMENTS AND PRESERVATION BRIEFS RELATED TO MEP DESIGN AND INSTALLATION.

**KEYNOTES: #**

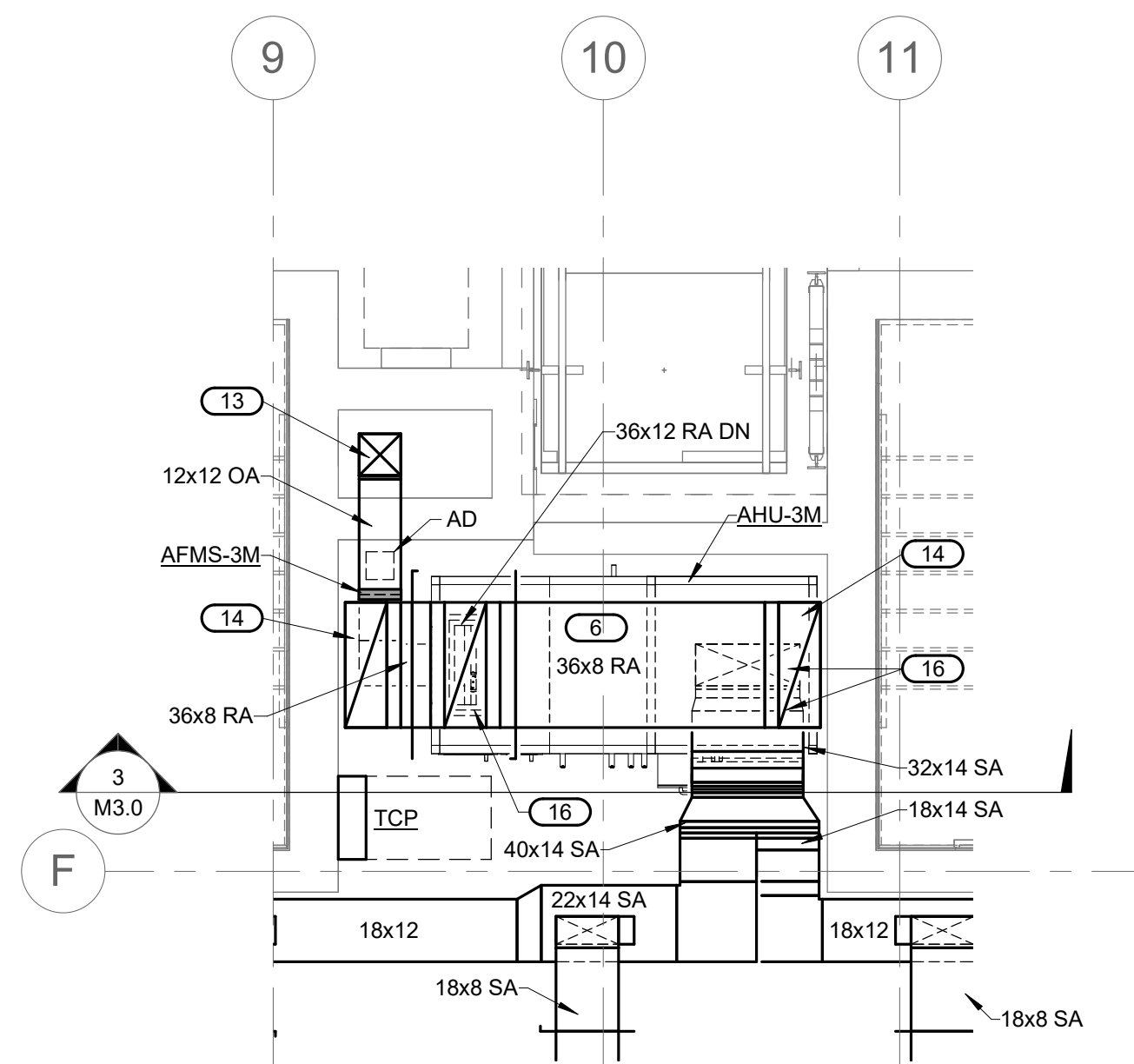
- 3" DIA. DUAL WALL AL29-4C WATER HEATER FLUE 5'-3"+/- AFF. TERMINATE W/ 45 DEG DOWNWARD ELBOW W/ STAINLESS STEEL WIRE MESH SCREEN ON INLET. FLASH WALL PENETRATION & PAINT FLUE.
- DIRECT DRIVE RELIEF FAN RF-1M SUSPENDED FROM STRUCTURE WITH SUITABLE STEEL RODS AND SPRING ISOLATORS. PROVIDE FLEXIBLE CONNECTION ON INLET & OUTLET.
- COOLING ONLY VAV UNIT WITH AIR BLENDERS, MERV 11 FILTRATION, PREHEAT COIL, FAN ARRAY, COOLING COIL AND UV LIGHTS. MOUNT ON 6" MIN. HIGH HOUSEKEEPING PAD.
- EXISTING LOUVERS TO REMAIN. CONNECT NEW PLENUMS TO LOUVERS. BLANK OFF UNUSED PORTIONS OF LOUVERS W/ INSULATED SHEET METAL SANDWICH PANELS.
- 3" DIA. G.I. COMBUSTION AIR DUCT 5'-3"+/- AFF. TERMINATE W/ 45 DEG DOWNWARD ELBOW W/ STAINLESS STEEL WIRE MESH SCREEN ON INLET. FLASH WALL PENETRATION & PAINT DUCT.
- SINGLE ZONE AHU WITH MERV 11 FILTRATION, COOLING COIL, REHEAT COIL AND PLENUM FAN.
- COOLING ONLY VAV UNIT WITH AIR BLENDERS, MERV 11 FILTRATION, PREHEAT COIL, FAN ARRAY, COOLING COIL AND UV LIGHTS. MOUNT ON 4" MIN. HIGH HOUSEKEEPING PAD.
- DIRECT DRIVE RELIEF FAN RF-2M SUSPENDED FROM STRUCTURE WITH SUITABLE STEEL RODS AND SPRING ISOLATORS. PROVIDE FLEXIBLE CONNECTIONS ON INLET & OUTLET.
- NEW 31"x39" LOUVERS IN EXISTING WINDOW OPENING WITH NEW PLENUMS. FIELD VERIFY DIMENSIONS BEFORE ORDERING. BLANK OFF UNUSED PORTIONS OF LOUVERS W/ INSULATED SHEET METAL SANDWICH PANELS.
- 6" ID DUAL WALL AL29-4C BOILER FLUES ABOVE LOUVER. TERMINATE WITH 45 DEG TURNED DOWN FACTORY ELBOW AT LEAST 12" FROM EXTERIOR WALL. FLASH WALL PENETRATION.
- 6" DIA. G.I. COMBUSTION AIR DUCTS ABOVE WINDOW. TERMINATE W/ 45 DEG DOWNWARD ELBOW W/ STAINLESS STEEL WIRE MESH SCREEN ON INLET. FLASH WALL PENETRATION & PAINT DUCT.
- 48"x18" OPENING ABOVE FUTURE CEILING.
- 12"x12" OA UP TO INTAKE PENTHOUSE ON SHAFT ROOF.
- 36"x12" RA UP TO BELOW BENCHES ABOVE.
- HEAVY GAUGE LATTICE STYLE RETURN GRILLE. ADD REINFORCEMENT TO SUPPORT AS REQUIRED TO KEEP FROM SAGGING BUT NOT BLOCK AIRFLOW.
- TRANSITION & CONNECT TO UNIT.



**1**  
M4.0  
MECHANICAL 103 PLAN - ENLARGED  
1/4" = 1'-0"



**2**  
M4.0  
MECHANICAL PLAN - ENLARGED  
1/4" = 1'-0"



**3**  
M4.0  
MECHANICAL PLAN - ENLARGED  
1/4" = 1'-0"



<b>A/E FIRMS</b> PRIME/ARCH: STRATA ARCHITECTURE 1703 OAK STREET, SUITE 100 KANSAS CITY, MO T: 816.474.0900 MEP/ENG: IMEG CORP. 1400 BALTIMORE STREET, SUITE 300 KANSAS CITY, MO T: 816.842.8437	<b>DESIGNED:</b> SGB	SUB SHEET NO.  <b>01</b> <b>M4.0</b>	TITLE OF SHEET MAURICE BATHHOUSE <b>MECHANICAL PLANS - ENLARGED</b>  REHABILITATE BATHHOUSES HOT SPRINGS NATIONAL PARK	DRAWING NO. <b>626</b> <b>180065</b>
	<b>CADD:</b> WMM			PMIS/PKG NO. 318674
	<b>TECH. REVIEW:</b> SGB			SHEET 150 OF 286
	<b>DATE:</b> 10.27.2023			

10/27/2023 1:14:10 PM