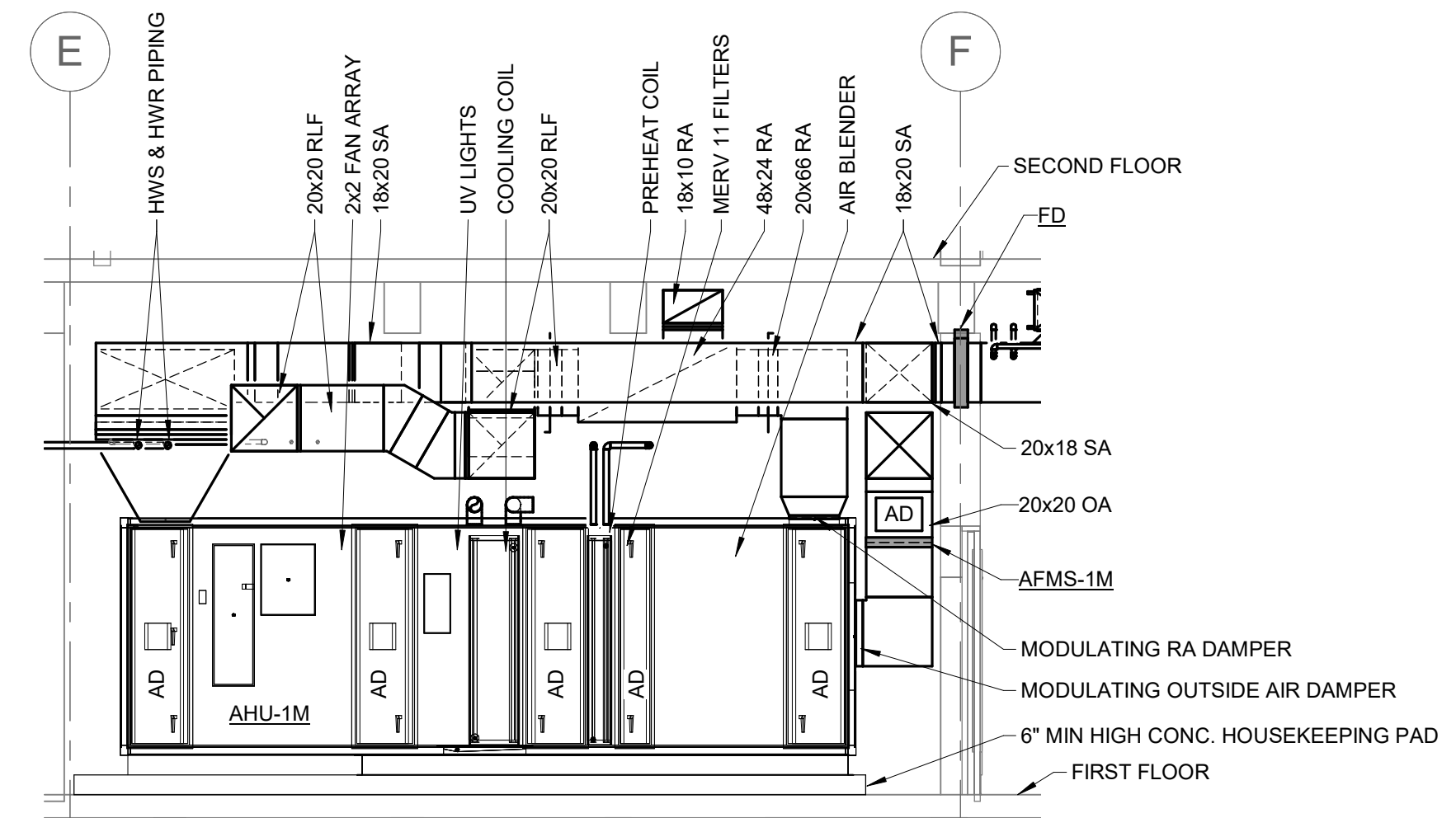
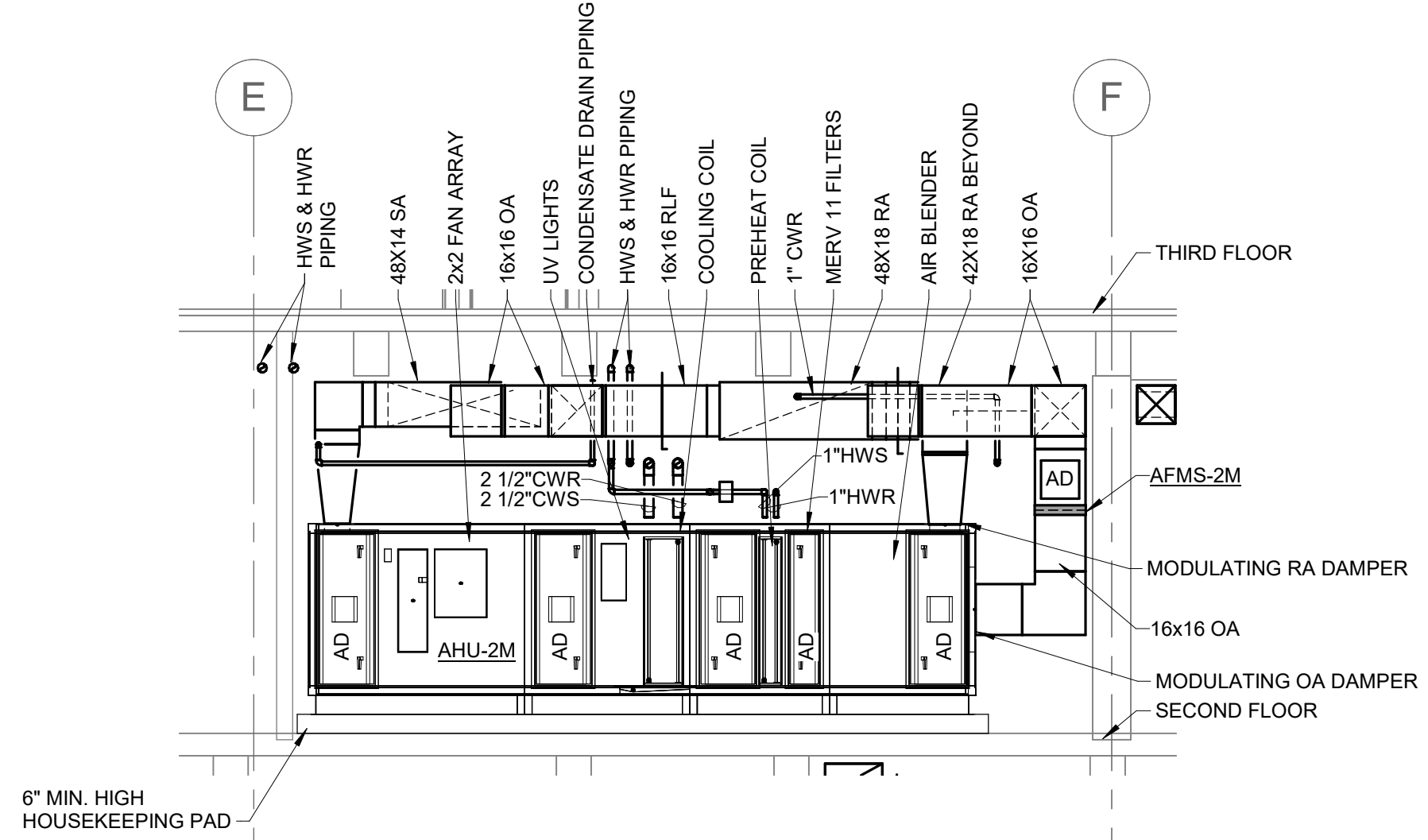


SHEET NOTES:

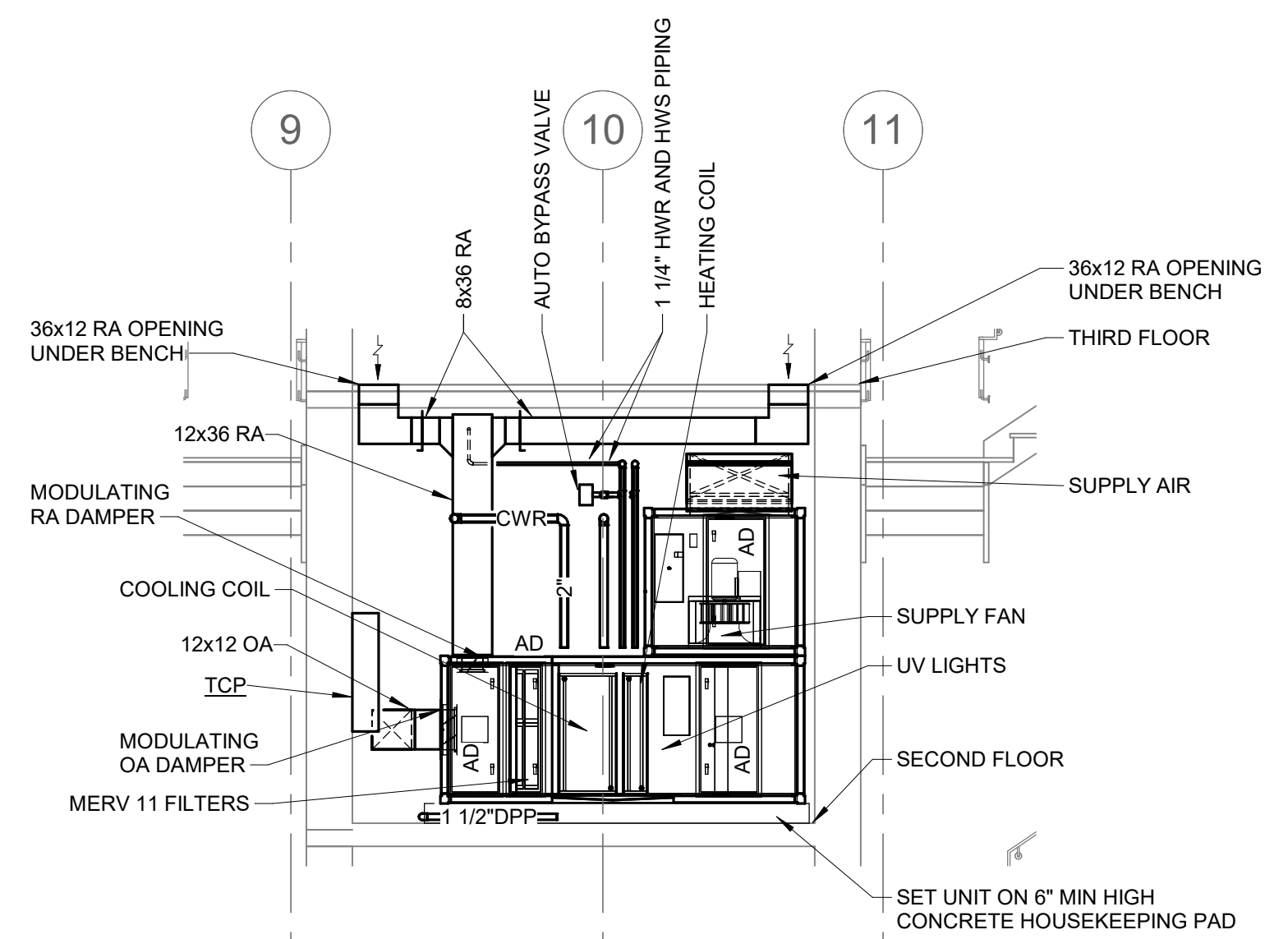
- ROUTING OF TERMINAL EQUIPMENT, DUCTWORK AND PIPING SHALL BE VERY CAREFULLY COORDINATED WITH EXISTING CONDITIONS, PRESERVATION ZONES AND HISTORIC NATURE OF BUILDING TO CONFORM WITH THE SECTARY OF THE INTERIOR'S REHABILITATION REQUIREMENTS AND PRESERVATION BRIEFS RELATED TO MEP DESIGN AND INSTALLATION.



1 AHU-1M SECTION LOOKING SOUTH
1/4" = 1'-0"



2 AHU-2M SECTION LOOKING SOUTH
1/4" = 1'-0"



3 AHU-3M SECTION LOOKING EAST
1/4" = 1'-0"



A/E FIRMS PRIME/ARCH: STRATA ARCHITECTURE 1703 OAK STREET, SUITE 100 KANSAS CITY, MO T: 816.474.0900 MEP/ENG: IMEG CORP. 1400 BALTIMORE STREET, SUITE 300 KANSAS CITY, MO T: 816.842.8437	DESIGNED: SGB	SUB SHEET NO. 01 M3.0	TITLE OF SHEET MAURICE BATHHOUSE MECHANICAL PLANS - SECTIONS REHABILITATE BATHHOUSES HOT SPRINGS NATIONAL PARK	DRAWING NO. 626 180065
	CADD: WMM			PMIS/PKG NO. 318674
	TECH. REVIEW: SGB			SHEET 119 OF 286
	DATE: 10.27.2023			