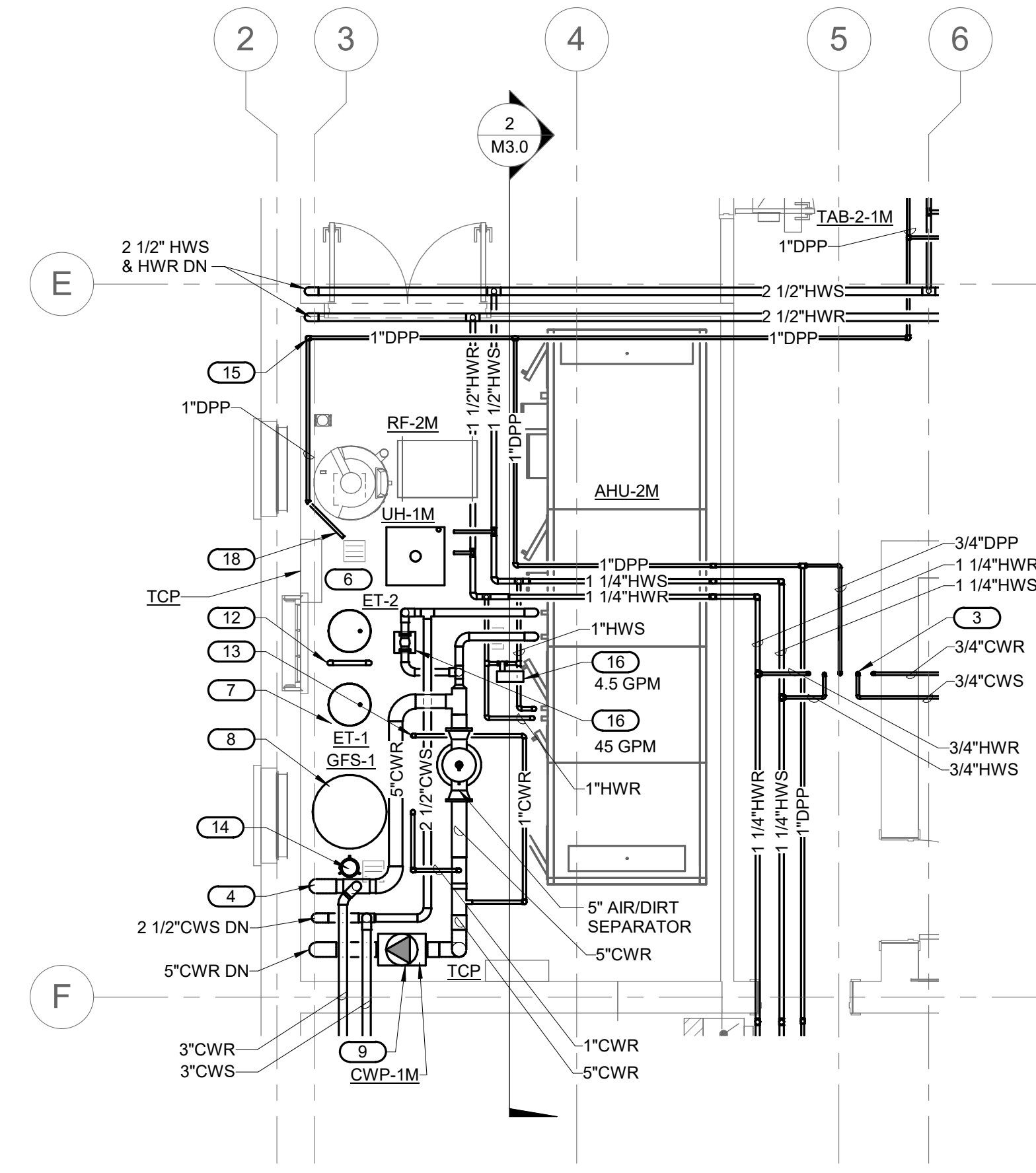
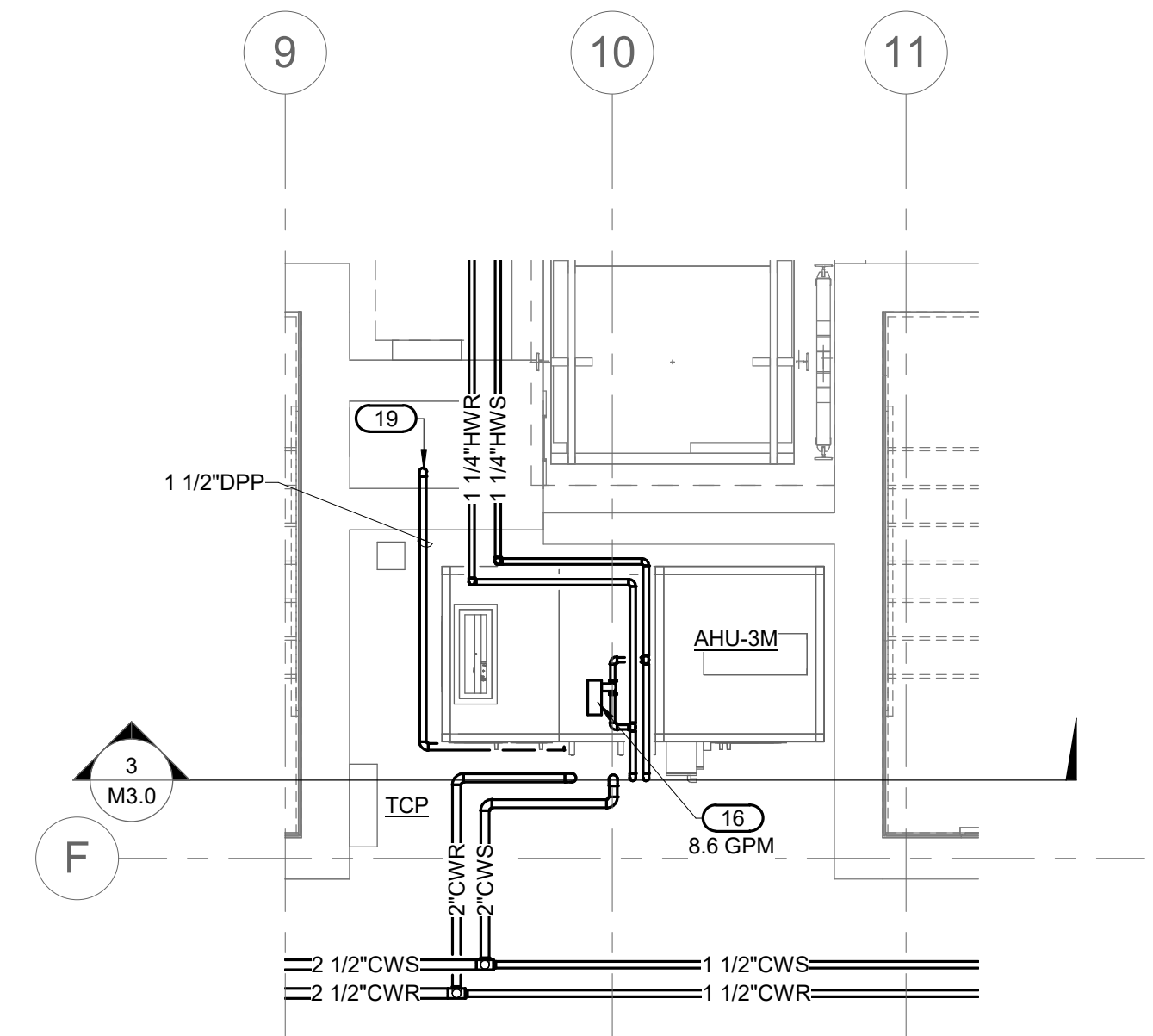


1
MP4.0
MECHANICAL PIPING 103 PLAN - ENLARGED
1/4" = 1'-0"



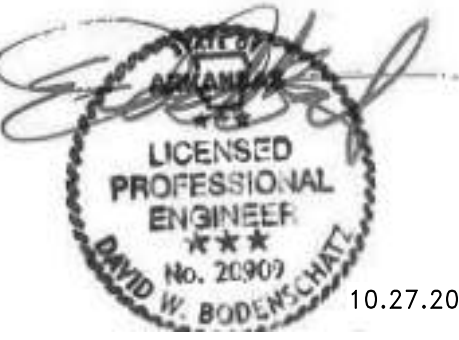
2
MP4.0
MECHANICAL PIPING PLAN - ENLARGED
1/4" = 1'-0"



3
MP4.0
MECHANICAL PLAN - ENLARGED
1/4" = 1'-0"

- SHEET NOTES:**
- ROUTING OF TERMINAL EQUIPMENT AND PIPING SHALL BE VERY CAREFULLY COORDINATED WITH EXISTING CONDITIONS, PRESERVATION ZONES AND HISTORIC NATURE OF BUILDING TO CONFORM WITH THE SECRETARY OF THE INTERIOR'S REHABILITATION REQUIREMENTS AND PRESERVATION BRIEFS RELATED TO MEP DESIGN AND INSTALLATION.

- KEYNOTES:**
- HIGH EFFICIENCY HOT WATER CONDENSING BOILER, MOUNT ON 4" MIN. HIGH HOUSEKEEPING PAD, EXTEND COMBUSTION AIR AND BOILER FLUE DUCTS THROUGH EXTERIOR WALL.
 - BOILER EMERGENCY SHUTDOWN PUSH BUTTON.
 - 3/4" HWS, HWR AND 1" CWS, CWR UP TO FCU ABOVE.
 - CHILLED WATER RETURN DOWN TO AHU-1M AND FAN COIL UNITS.
 - SPLIT COUPLED IN-LINE PUMP.
 - HEATING WATER EXPANSION TANK MOUNTED ON 4" HIGH CONCRETE HOUSEKEEPING PAD.
 - CHILLED WATER EXPANSION TANK MOUNTED ON 4" HIGH CONCRETE HOUSEKEEPING PAD.
 - CHILLED WATER GLYCOL FILL SYSTEM MOUNTED ON 4" HIGH CONCRETE HOUSEKEEPING PAD.
 - FLOOR MOUNTED SPLIT COUPLED IN-LINE CHILLED WATER PUMP.
 - HEATING WATER POT CHEMICAL FEEDER.
 - 1-1/4" HWS UP TO EXPANSION TANK.
 - 1-1/4" HWS DN & UP TO CONNECT TO ET-2.
 - 1" CWR DN TO ET-1.
 - CHILLED WATER POT CHEMICAL FEEDER.
 - DROP DPP DN AND ROUTE TO FLOOR SINK.
 - MINIMUM FLOW AUTO BYPASS VALVE. SEE PLANS FOR GPM.
 - BOILER BYPASS CONTROL VALVE.
 - ROUTE DPP ALONG FLOOR TO FLOOR SINK.
 - ROUTE DPP DN IN CHASE TO BASEMENT.



10.27.2023

A/E FIRMS PRIME/ARCH: STRATA ARCHITECTURE 1703 OAK STREET, SUITE 100 KANSAS CITY, MO T: 816.474.0900 MEP/ENG: IMEG CORP. 1400 BALTIMORE STREET, SUITE 300 KANSAS CITY, MO T: 816.842.8437	DESIGNED:	SUB SHEET NO. 01 MP4.0	TITLE OF SHEET MAURICE BATHHOUSE MECHANICAL PIPING - ENLARGED PLANS REHABILITATE BATHHOUSES HOT SPRINGS NATIONAL PARK	DRAWING NO. 626 180065
	CADD:			PMIS/PKG NO. 318674
	TECH. REVIEW:			SHEET 149 OF 286
	DATE: 10.27.2023			

10/27/2023, 1:14:52 PM