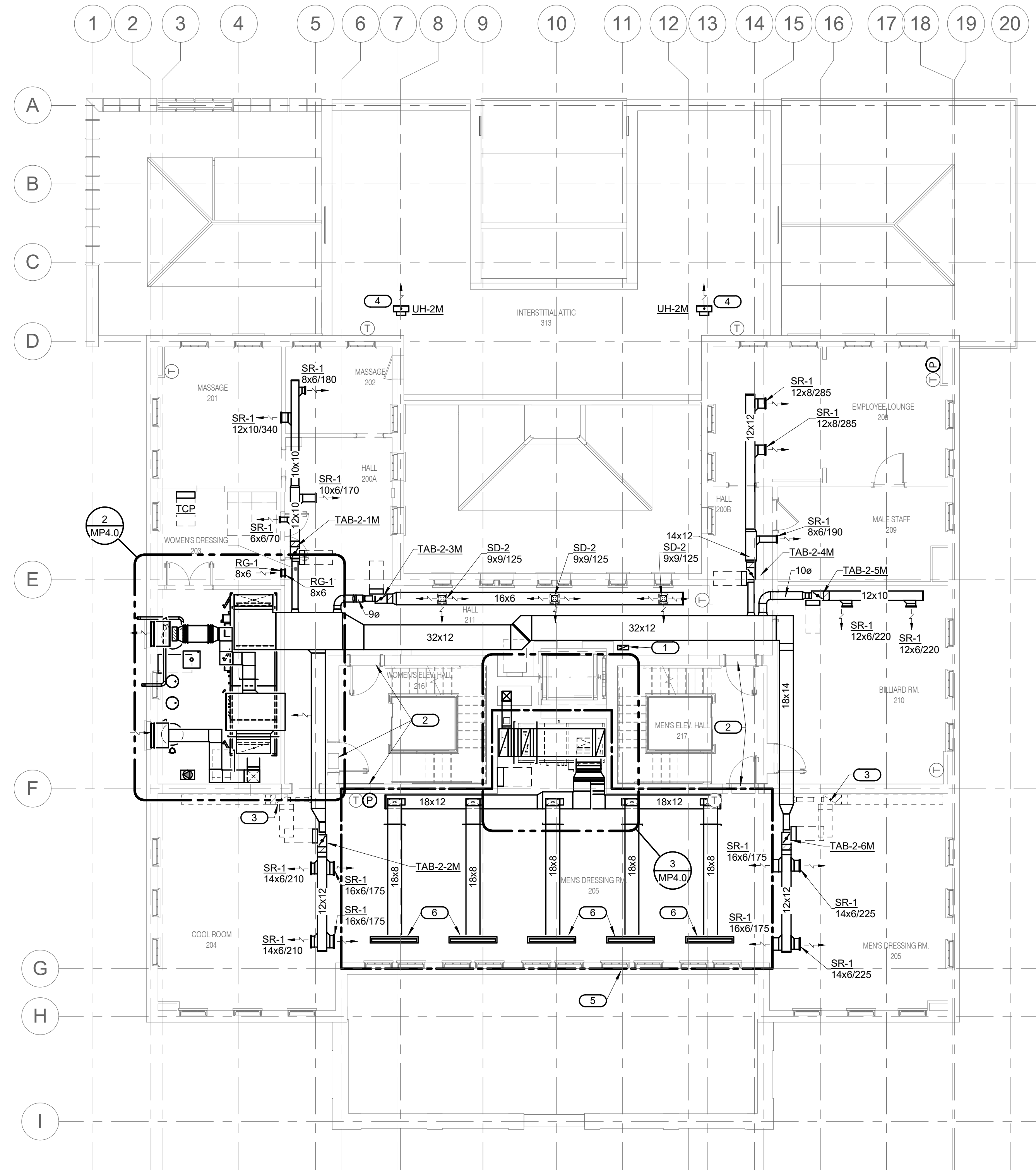


**SHEET NOTES:**

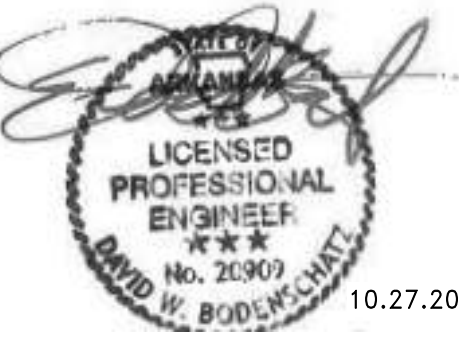
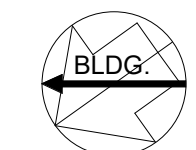
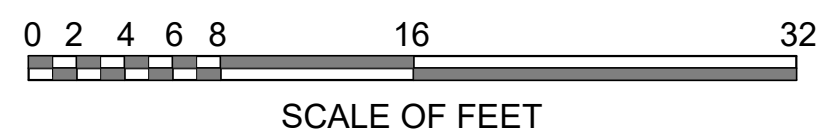
- ROUTING OF TERMINAL EQUIPMENT, DUCTWORK AND PIPING SHALL BE VERY CAREFULLY COORDINATED WITH EXISTING CONDITIONS, PRESERVATION ZONES AND HISTORIC NATURE OF BUILDING TO CONFORM WITH THE SECRETARY OF THE INTERIOR'S REHABILITATION REQUIREMENTS AND PRESERVATION BRIEFS RELATED TO MEP DESIGN AND INSTALLATION.

**KEYNOTES:** #

- 14"x6" EXHAUST DOWN AND UP TO ROOFTOP EXHAUST FAN.
- INSTALL SHEET METAL RETURN AIR PLENUM WITH BOTTOM OF PLENUM JUST AT BOTTOM OF LOWEST EXISTING OPENING THROUGH EXISTING STAIR. SEAL JOINTS SMOKE TIGHT.
- FUTURE VAV BOX.
- HORIZONTAL HOT WATER UNIT HEATER.
- NO PIPING OR DUCTWORK SHALL PENETRATE THE SECOND FLOOR IN THIS AREA.
- LINED SUPPLY AIR PLENUMS FOR LINEAR SUPPLY AIR GRILLS ABOVE.



**1**  
M1.2 SECOND FLOOR MECHANICAL PLAN  
1/8" = 1'-0"



10.27.2023

A/E FIRMS  
PRIME/ARCH:  
STRATA ARCHITECTURE  
1703 OAK STREET,  
SUITE 100  
KANSAS CITY, MO  
T: 816.474.0900

MEP/ENG:  
IMEG CORP.  
1400 BALTIMORE STREET,  
SUITE 300  
KANSAS CITY, MO  
T: 816.842.8437

DESIGNED: SGB  
CADD: WMM  
TECH. REVIEW: SGB  
DATE: 10.27.2023

SUB SHEET NO.  
**01**  
**M1.2**

TITLE OF SHEET  
MAURICE BATHHOUSE  
**SECOND FLOOR  
VENTILATION PLAN**  
REHABILITATE BATHHOUSES  
HOT SPRINGS NATIONAL PARK

DRAWING NO.  
**626**  
**180065**  
PMIS/PKG NO.  
318674  
SHEET  
143 OF 286

10/27/2023 1:14:59 PM