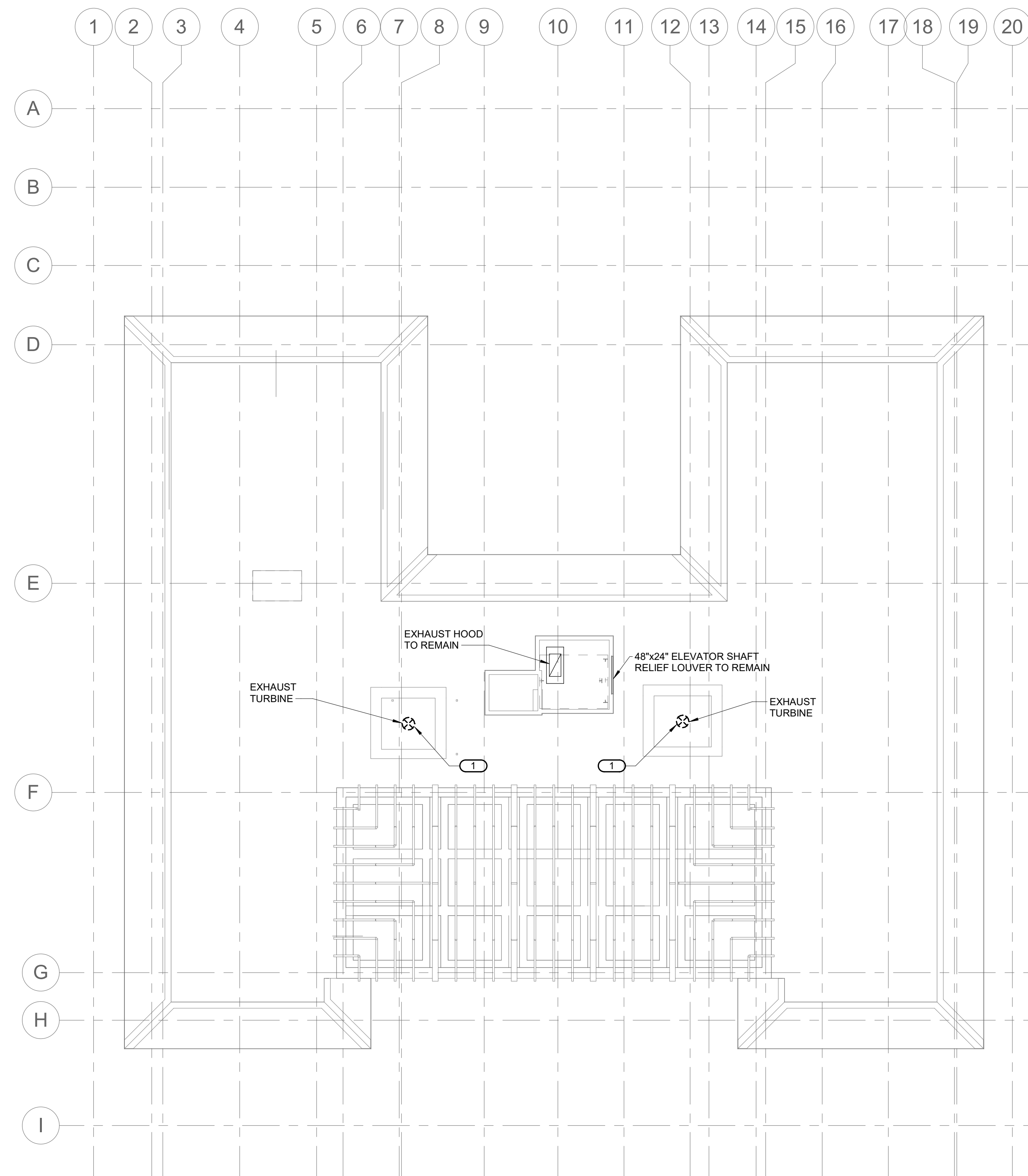


**SHEET NOTES:**

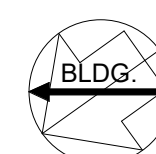
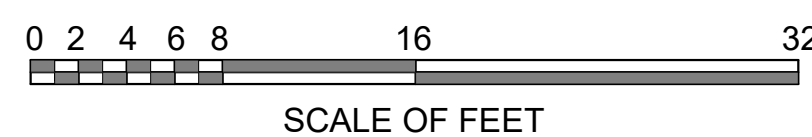
1. ALL DARK AND DASHED EQUIPMENT, DUCTWORK, PIPING AND ASSOCIATED SUPPORTS ARE TO BE REMOVED IN ITS ENTIRETY AND EXISTING PENETRATIONS PATCHED.
2. DISCONNECT AND REMOVE ALL EXISTING DUCTWORK, PIPING AND EQUIPMENT UNLESS NOTED OTHERWISE.

**KEYNOTES: #**

1. DISCONNECT AND REMOVE EXISTING ROOF TURBINE AND PATCH ROOF.



**1**  
**MX1.4**  
**ROOF MECHANICAL DEMOLITION PLAN**  
 1/8" = 1'-0"



10.27.2023

A/E FIRMS PRIME/ARCH: <b>STRATA ARCHITECTURE</b> 1703 OAK STREET, SUITE 100 KANSAS CITY, MO T: 816.474.0900 MEP/ENG: <b>IMEG CORP.</b> 1400 BALTIMORE STREET, SUITE 300 KANSAS CITY, MO T: 816.842.8437	DESIGNED: SGB	SUB SHEET NO.  <b>01</b> <b>MX1.4</b>	TITLE OF SHEET <b>MAURICE BATHHOUSE</b> <b>ROOF MECHANICAL</b> <b>DEMOLITION PLAN</b>  REHABILITATE BATHHOUSES HOT SPRINGS NATIONAL PARK	DRAWING NO. <b>626</b> <b>180065</b>
	CADD: WMM			PMIS/PKG NO. 318674
	TECH. REVIEW: SGB			SHEET 140 OF 286
	DATE: 10.27.2023			