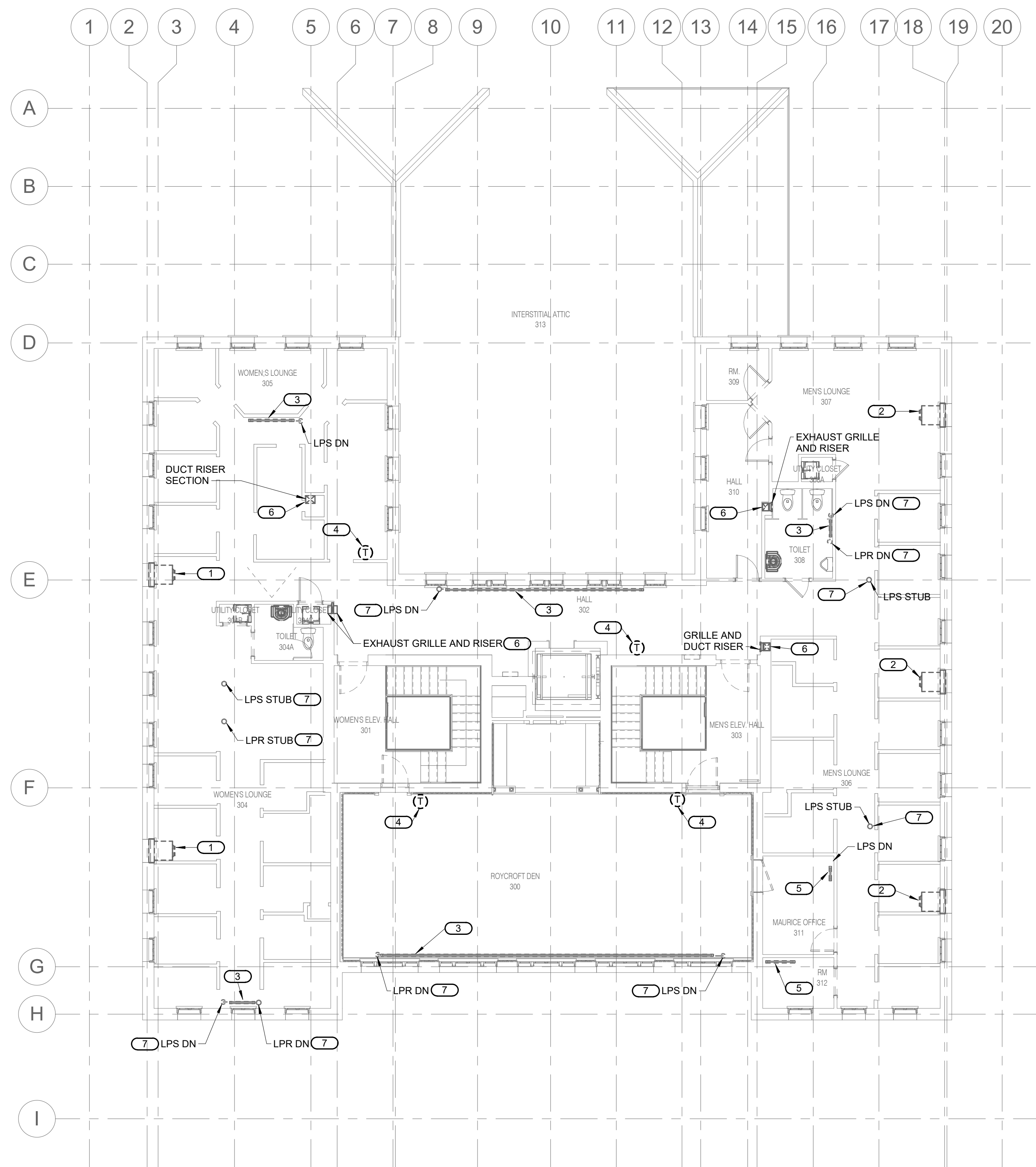


- SHEET NOTES:**
1. ALL DARK AND DASHED EQUIPMENT, DUCTWORK, PIPING AND ASSOCIATED SUPPORTS ARE TO BE REMOVED IN ITS ENTIRETY AND EXISTING PENETRATIONS PATCHED.
 2. DISCONNECT AND REMOVE ALL EXISTING DUCTWORK, PIPING AND EQUIPMENT UNLESS NOTED OTHERWISE.

- KEYNOTES: #**
1. DISCONNECT AND REMOVE EXISTING PROPELLER EXHAUST FAN AND ASSOCIATED HOUSING, LOUVER, CONTROLS, AND SUPPORTS.
 2. DISCONNECT AND REMOVE EXISTING INTAKE LOUVER, DAMPER AND ASSOCIATED HOUSING, CONTROLS AND SUPPORTS.
 3. DISCONNECT AND REMOVE EXISTING RADIATOR AND ASSOCIATED PIPING. OWNER RESERVES FIRST RIGHT OF REFUSAL.
 4. DISCONNECT AND REMOVE EXISTING HISTORIC THERMOSTAT. OWNER RESERVES FIRST RIGHT OF REFUSAL.
 5. DISCONNECT AND REMOVE EXISTING RADIATOR AND EXISTING PIPING. CLEAN RADIATOR AND REINSTALL SECURELY IN SAME LOCATION MINUS PIPING.
 6. DISCONNECT AND REMOVE EXISTING DUCTWORK AND ASSOCIATED SUPPORTS.
 7. DISCONNECT AND REMOVE EXISTING PIPING AND ASSOCIATED SUPPORTS.



1 THIRD FLOOR MECHANICAL DEMOLITION PLAN
 MX1.3 1/8" = 1'-0"



A/E FIRMS PRIME/ARCH: STRATA ARCHITECTURE 1703 OAK STREET, SUITE 100 KANSAS CITY, MO T: 816.474.0900 MEP/ENG: IMEG CORP. 1400 BALTIMORE STREET, SUITE 300 KANSAS CITY, MO T: 816.842.8437	DESIGNED: SGB	SUB SHEET NO. 01 MX1.3	TITLE OF SHEET MAURICE BATHHOUSE THIRD FLOOR MECHANICAL DEMOLITION PLAN REHABILITATE BATHHOUSES HOT SPRINGS NATIONAL PARK	DRAWING NO. 626 180065
	CADD: WMM			PMIS/PKG NO. 318674
	TECH. REVIEW: SGB			SHEET 139 OF 286
	DATE: 10.27.2023			

10/27/2023 1:14:58 PM