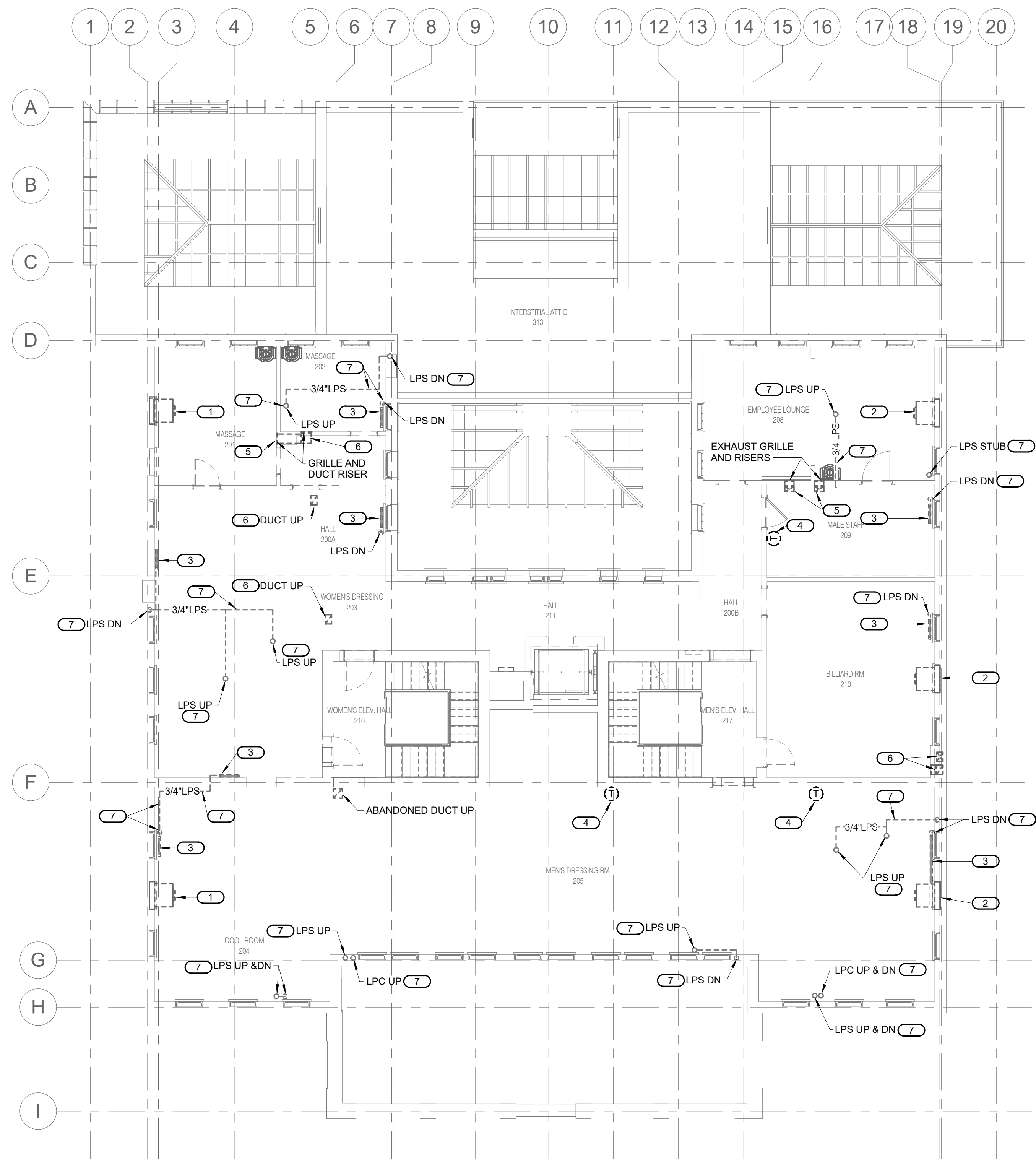


- SHEET NOTES:**
1. ALL DARK AND DASHED EQUIPMENT, DUCTWORK, PIPING AND ASSOCIATED SUPPORTS ARE TO BE REMOVED IN ITS ENTIRETY AND EXISTING PENETRATIONS PATCHED.
  2. DISCONNECT AND REMOVE ALL EXISTING DUCTWORK, PIPING AND EQUIPMENT UNLESS NOTED OTHERWISE.

- KEYNOTES: #**
1. DISCONNECT AND REMOVE EXISTING PROPELLER EXHAUST FAN AND ASSOCIATED HOUSING, LOUVER, CONTROLS, AND SUPPORTS.
  2. DISCONNECT AND REMOVE EXISTING INTAKE LOUVER, DAMPER AND ASSOCIATED HOUSING, CONTROLS AND SUPPORTS.
  3. DISCONNECT AND REMOVE EXISTING RADIATOR AND ASSOCIATED PIPING. CO RESERVES FIRST RIGHT OF REFUSAL.
  4. DISCONNECT AND REMOVE EXISTING HISTORIC THERMOSTAT. OWNER RESERVES FIRST RIGHT OF REFUSAL.
  5. REMOVE EXISTING DUCT AND GRILLE. SALVAGE AND CLEAN GRILLE FOR REINSTALLATION.
  6. DISCONNECT AND REMOVE EXISTING DUCTWORK AND ASSOCIATED SUPPORTS.
  7. DISCONNECT AND REMOVE EXISTING PIPING AND ASSOCIATED SUPPORTS.



**1** SECOND FLOOR MECHANICAL DEMOLITION PLAN  
 MX1.2 1/8" = 1'-0"  
 0 2 4 6 8 16 32  
 SCALE OF FEET



A/E FIRMS PRIME/ARCH: <b>STRATA ARCHITECTURE</b> 1703 OAK STREET, SUITE 100 KANSAS CITY, MO T: 816.474.0900 MEP/ENG: <b>IMEG CORP.</b> 1400 BALTIMORE STREET, SUITE 300 KANSAS CITY, MO T: 816.842.8437	DESIGNED: SGB	SUB SHEET NO. <b>01</b> <b>MX1.2</b>	TITLE OF SHEET <b>MAURICE BATHHOUSE</b> <b>SECOND FLOOR</b> <b>MECHANICAL DEMOLITION</b> <b>PLAN</b> REHABILITATE BATHHOUSES HOT SPRINGS NATIONAL PARK	DRAWING NO. <b>626</b> <b>180065</b>
	CADD: WMM			PMIS/PKG NO. 318674
	TECH. REVIEW: SGB			SHEET 138 OF 286
	DATE: 10.27.2023			

10/27/2023 1:14:58 PM