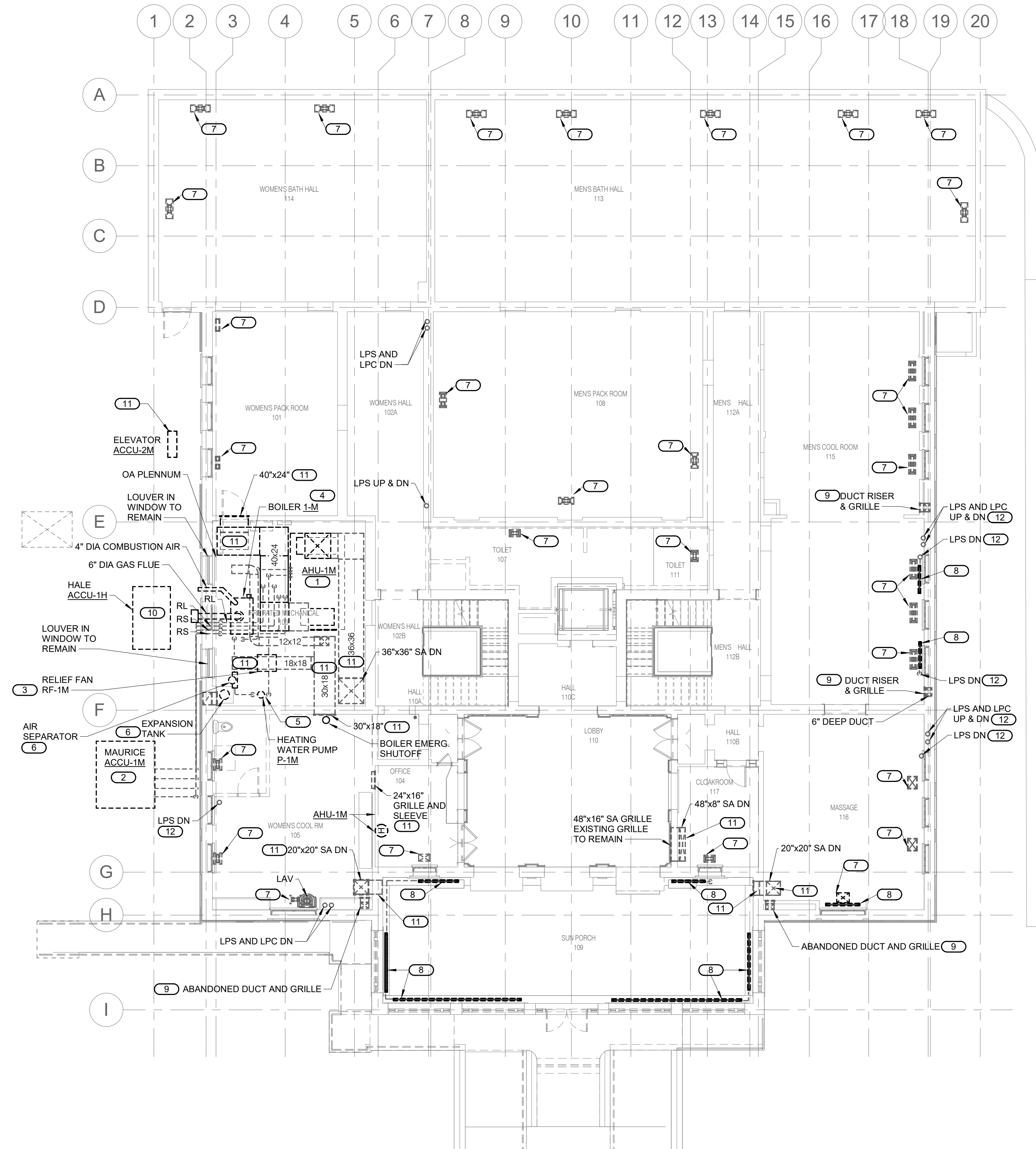
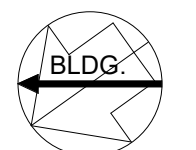
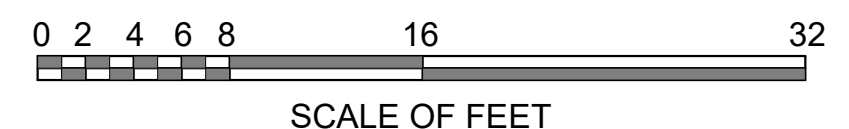


- SHEET NOTES:**
1. ALL DARK AND DASHED EQUIPMENT, DUCTWORK, PIPING AND ASSOCIATED SUPPORTS ARE TO BE REMOVED IN ITS ENTIRETY AND EXISTING PENETRATIONS PATCHED.
 2. DISCONNECT AND REMOVE ALL EXISTING DUCTWORK, PIPING AND EQUIPMENT UNLESS NOTED OTHERWISE.

- KEYNOTES: #**
1. DISCONNECT AND REMOVE EXISTING AIR HANDLING UNIT AND ALL ASSOCIATED DUCTWORK, PIPING, CONTROLS, AND SUPPORTS.
 2. DISCONNECT AND REMOVE EXISTING AIR COOLED CONDENSING UNIT AND ALL ASSOCIATED PIPING, CONTROLS, AND SUPPORTS.
 3. DISCONNECT AND REMOVE EXISTING RELIEF FAN AND ALL ASSOCIATED DUCTWORK, CONTROLS, AND SUPPORTS.
 4. DISCONNECT AND REMOVE EXISTING BOILER AND ASSOCIATED PIPING, BOILER FLUE AND COMBUSTION AIR DUCTWORK, CONTROLS, AND SUPPORTS.
 5. DISCONNECT AND REMOVE EXISTING HEATING WATER PUMP AND ASSOCIATED PIPING, CONTROLS, AND SUPPORTS.
 6. DISCONNECT AND REMOVE EXISTING AIR SEPARATOR, EXPANSION TANK AND ALL ASSOCIATED PIPING AND SUPPORTS.
 7. DISCONNECT AND REMOVE EXISTING SUPPLY FLOOR GRILLE.
 8. DISCONNECT AND REMOVE EXISTING RADIATOR AND ASSOCIATED PIPING. SALVAGE RADIATOR.
 9. REMOVE EXISTING DUCT AND GRILLE. SALVAGE AND CLEAN GRILLE FOR REINSTALLATION.
 10. DISCONNECT, REMOVE, AND RELOCATE EXISTING AIR COOLED CONDENSING UNIT FOR THE HALE BUILDING TO ALLOW FOR SITE WORK. SET UNIT ON A NEW CONCRETE HOUSEKEEPING PAD ON THE HALE SITE. EVACUATE THE EXISTING REFRIGERANT PIPING. INTERCEPT AND CONNECT TO EXISTING REFRIGERANT PIPING AND CONTROLS ON THE HALE SITE AND PUT IN WORKING ORDER. RECHARGE THE SYSTEM AND PUT UNIT IN OPERATING ORDER. DISCONNECT AND REMOVE FROM TEMPORARY LOCATION AND PREP FOR RELOCATION TO ORIGINAL LOCATION WHEN SITE WORK IS COMPLETE.
 11. TEMPORARILY DISCONNECT AND REMOVE EXISTING ELEVATOR CONDENSING UNIT TO ALLOW FOR SITE WORK.
 12. DISCONNECT AND REMOVE EXISTING DUCTWORK AND ASSOCIATED SUPPORTS.
 13. DISCONNECT AND REMOVE EXISTING PIPING AND ASSOCIATED SUPPORTS.



1 FIRST FLOOR MECHANICAL DEMOLITION PLAN
 MX1.1 1/8" = 1'-0"



10.27.2023

A/E FIRMS PRIME/ARCH: STRATA ARCHITECTURE 1703 OAK STREET, SUITE 100 KANSAS CITY, MO T: 816.474.0900 ME/ENGS: IMEG CORP. 1400 BALTIMORE STREET, SUITE 300 KANSAS CITY, MO T: 816.842.8437	DESIGNED: SGB	SUB SHEET NO. 01 MX1.1	TITLE OF SHEET FIRST FLOOR MECHANICAL DEMOLITION PLAN REHABILITATE BATHHOUSES HOT SPRINGS NATIONAL PARK	DRAWING NO. 626 180065
	CADD: WMM			PMIS/PKG NO. 318674
	TECH. REVIEW: SGB			SHEET 137 OF 286
	DATE: 10.27.2023			

11/20/2023 8:28:16 AM