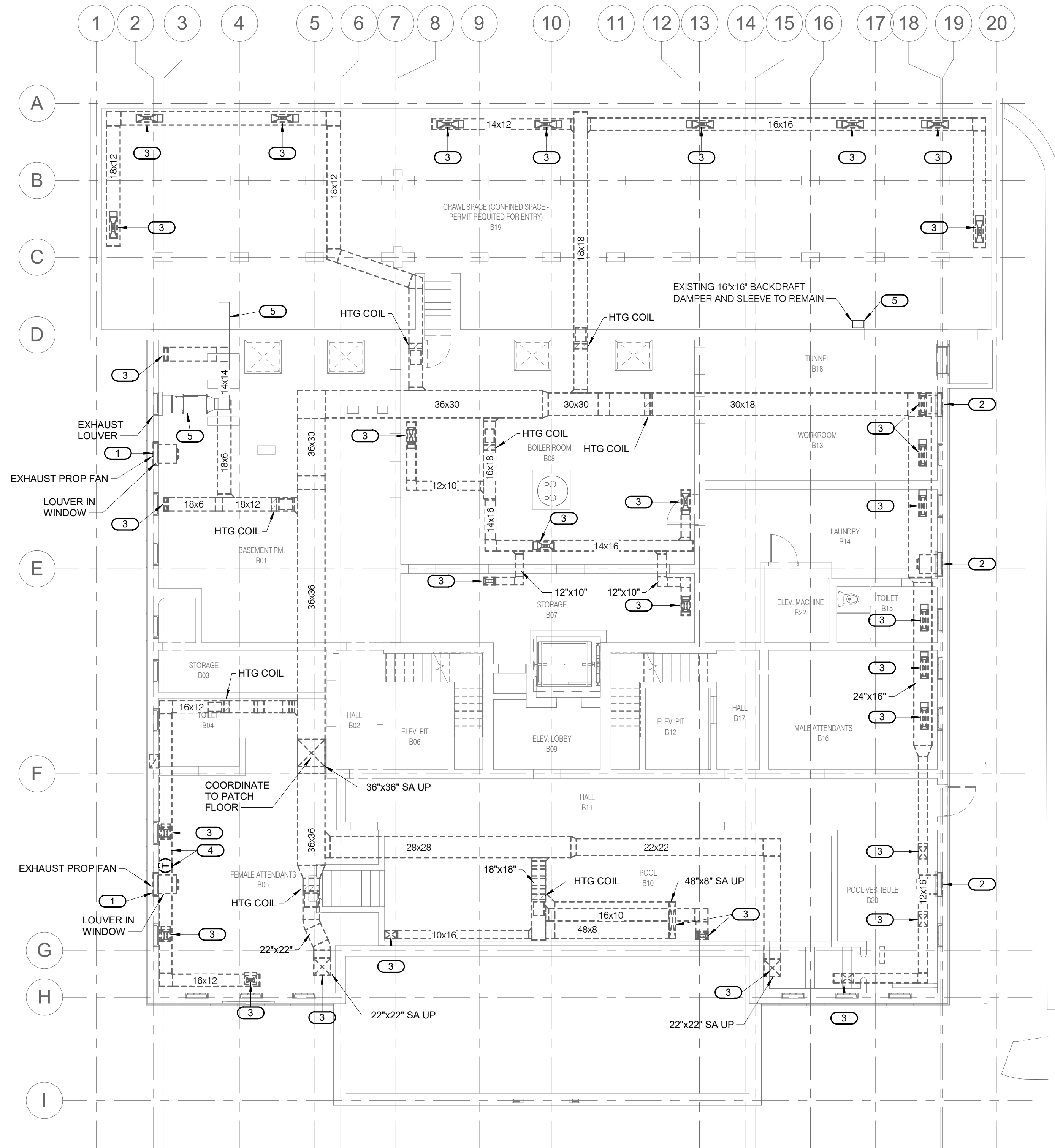


- SHEET NOTES:**
1. ALL DARK AND DASHED EQUIPMENT, DUCTWORK, PIPING AND ASSOCIATED SUPPORTS ARE TO BE REMOVED IN ITS ENTIRETY AND EXISTING PENETRATIONS PATCHED. DUCTWORK AND PIPING SHOWN LIGHTLY IS TO REMAIN.
 2. DISCONNECT AND REMOVE ALL EXISTING DUCTWORK, PIPING AND EQUIPMENT UNLESS NOTED OTHERWISE.

- KEYNOTES: #**
1. DISCONNECT AND REMOVE EXISTING PROPELLER EXHAUST FAN AND ASSOCIATED HOUSING, CONTROLS, AND SUPPORTS. EXISTING LOUVER IS TO REMAIN.
 2. DISCONNECT INTAKE DAMPER AND ASSOCIATED HOUSING, CONTROLS AND SUPPORTS. EXISTING LOUVER IS TO REMAIN.
 3. DEMO EXISTING SUPPLY DUCT UP TO SUPPLY GRILLE. COORDINATE TO PATCH ABANDONED OPENING TO MATCH EXISTING.
 4. DEMO EXISTING THERMOSTAT AND HUMIDISTAT AND ASSOCIATED WIRING.
 5. EXISTING EXHAUST FAN AND ASSOCIATED LOUVER, DUCTWORK AND CONTROLS TO REMAIN.



1 BASEMENT MECHANICAL DEMOLITION PLAN
 MX1.0 1/8" = 1'-0"
 0 2 4 6 8 16 32
 SCALE OF FEET



A/E FIRMS PRIME/ARCH: STRATA ARCHITECTURE 1703 OAK STREET, SUITE 100 KANSAS CITY, MO T: 816.449.0900 MEP/ENG: IMEG CORP. 1400 BALTIMORE STREET, SUITE 300 KANSAS CITY, MO T: 816.842.8437	DESIGNED: SGB	SUB SHEET NO. 01 MX1.0	TITLE OF SHEET MAURICE BATHHOUSE BASEMENT MECHANICAL DEMOLITION PLAN REHABILITATE BATHHOUSES HOT SPRINGS NATIONAL PARK	DRAWING NO. 626 180065
	CADD: WMM			PMIS/PKG NO. 318674
	TECH. REVIEW: SGB			SHEET 136 OF 286
	DATE: 10.27.2023			

10/27/2023 1:14:53 PM