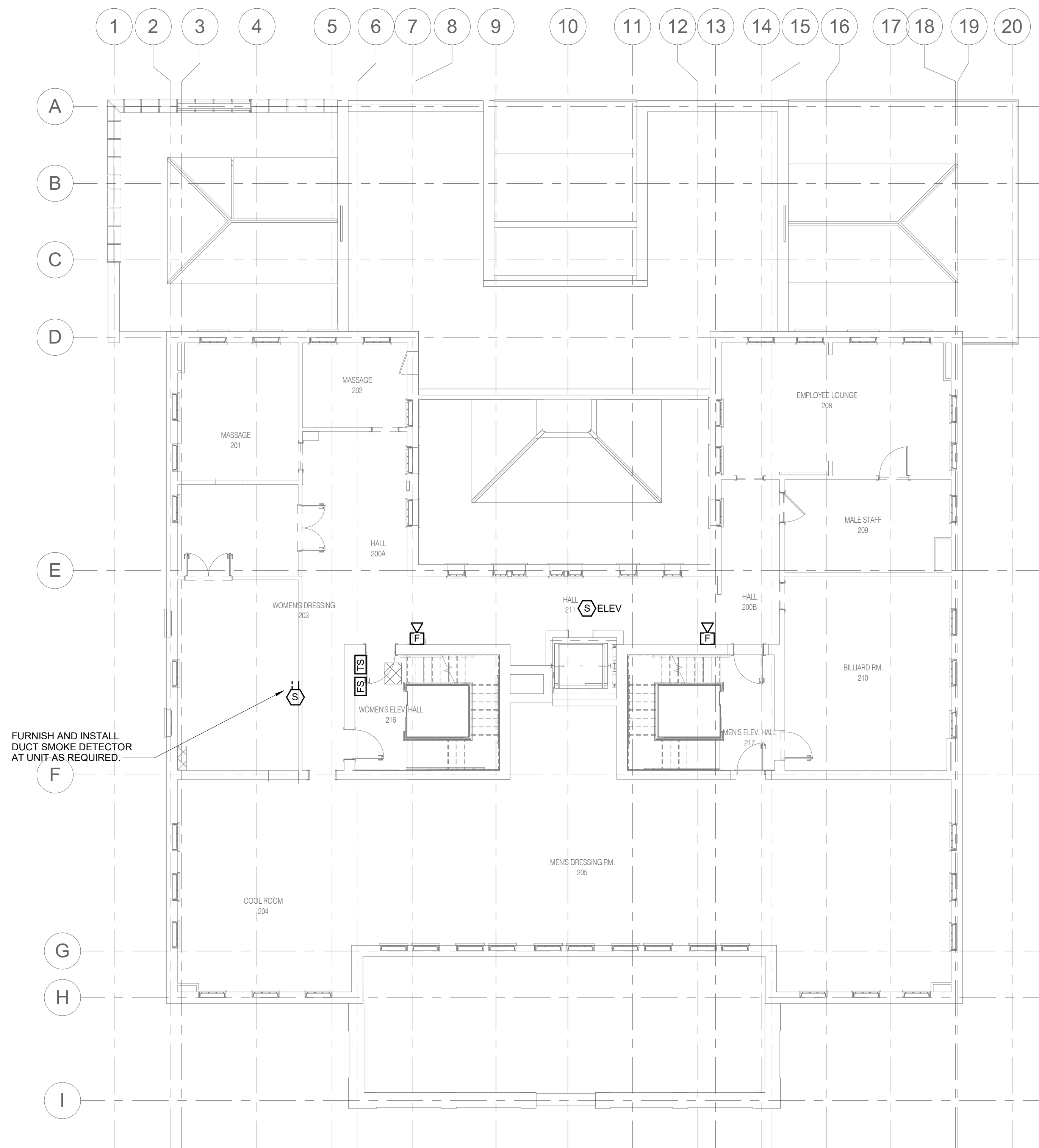
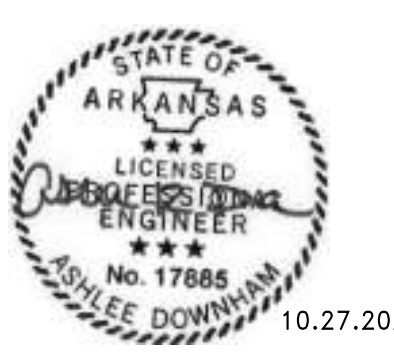
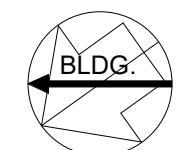
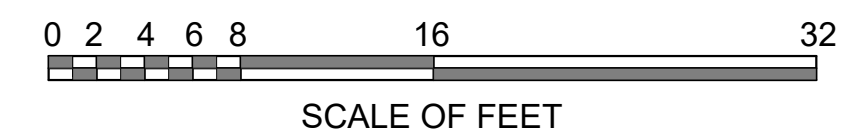


- SHEET NOTES:**
1. REFER TO SHEET E0.0 AND E0.1 FOR GENERAL NOTES AND SYMBOLS.
  2. ALL FIRE ALARM WIRING SHALL BE INSTALLED IN CONDUIT.
  3. REFER TO FIRE PROTECTION RISER FOR COORDINATION OF INSTALLATION OF TAMPER SWITCH MONITOR AND FLOW SWITCH MONITOR.



FURNISH AND INSTALL DUCT SMOKE DETECTOR AT UNIT AS REQUIRED.

**1**  
**EF1.2** SECOND FLOOR FIRE ALARM PLAN  
1/8" = 1'-0"



10.27.2023

A/E FIRMS STRATA ARCHITECTURE 1703 OAK STREET, SUITE 100 KANSAS CITY, MO T: 816.474.0900 WEBSITE: IMEG CORP. 1400 BALTIMORE STREET, SUITE 300 KANSAS CITY, MO T: 816.842.8437	DESIGNED: PIP	SUB SHEET NO. <b>01</b> <b>EF1.2</b>	TITLE OF SHEET <b>MAURICE BATHHOUSE</b> <b>SECOND FLOOR FIRE</b> <b>ALARM PLAN</b> REHABILITATE BATHHOUSES HOT SPRINGS NATIONAL PARK	DRAWING NO. <b>626</b> <b>180065</b>
	CADD: WMM			PMIS/PKG NO. 318674
	TECH. REVIEW: PIP			SHEET 183 OF 286
	DATE: 10.27.2023			

10/27/2023 1:13:40 PM