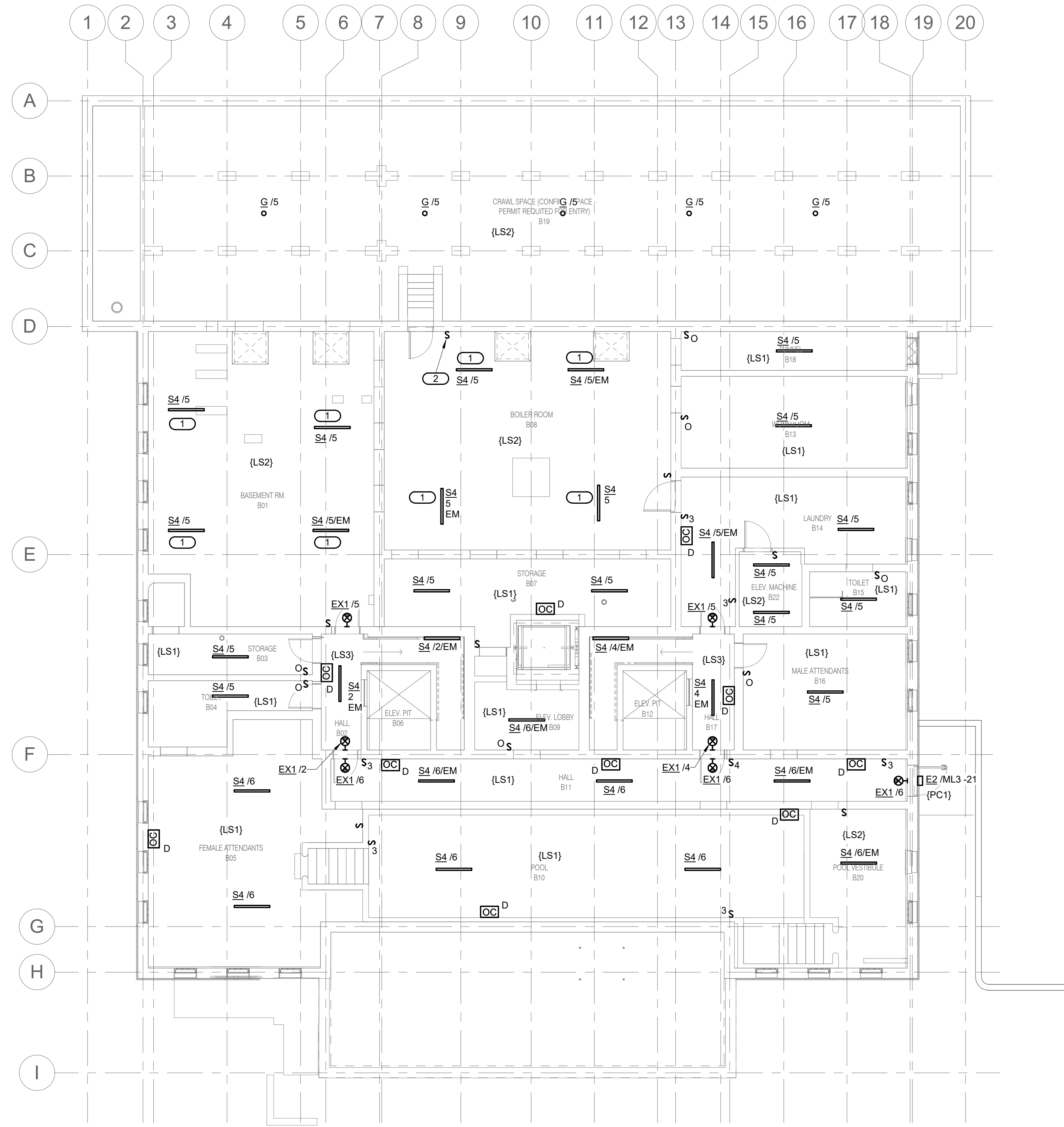
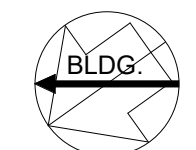
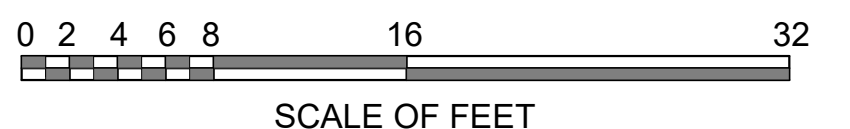


- SHEET NOTES:**
- REFER TO SHEET E0.0 AND E0.1 FOR GENERAL NOTES AND SYMBOLS.
 - ALL LIGHTING CIRCUITS ON THIS SHEET SHALL BE CONNECTED TO PANEL MLB, UNLESS NOTED OTHERWISE.
 - MOUNT LINEAR SUSPENDED TYPE LIGHTING FIXTURE AT 7' 6" AFF, UNLESS NOTED OTHERWISE. COORDINATE WITH STRUCTURAL BEAM, MECHANICAL PIPES AND DUCTWORK.

- KEYNOTES:** #
- SUSPENDED LINEAR FIXTURE SHALL BE MOUNTED AT 7' 0" AFF OR EVEN WITH BOTTOM OF BEAMS.
 - LIGHT SWITCH CONTROLS LIGHT FIXTURES 'G' IN CRAWL SPACE.



1
EL1.0 BASEMENT LIGHTING PLAN
1/8" = 1'-0"



10.27.2023

A/E FIRMS PRIME/ARCH: STRATA ARCHITECTURE 1703 OAK STREET, SUITE 100 KANSAS CITY, MO T: 816.474.0900 MEP/ENG: IMEG CORP. 1400 BALTIMORE STREET, SUITE 300 KANSAS CITY, MO T: 816.842.8437	DESIGNED: PIP	SUB SHEET NO. 01 EL1.0	TITLE OF SHEET MAURICE BATHHOUSE BASEMENT LIGHTING PLAN REHABILITATE BATHHOUSES HOT SPRINGS NATIONAL PARK	DRAWING NO. 626 180065
	CADD: WMM			PMIS/PKG NO. 318674
	TECH. REVIEW: PIP			SHEET 171 OF 286
	DATE: 10.27.2023			

10/27/2023 1:13:42 PM