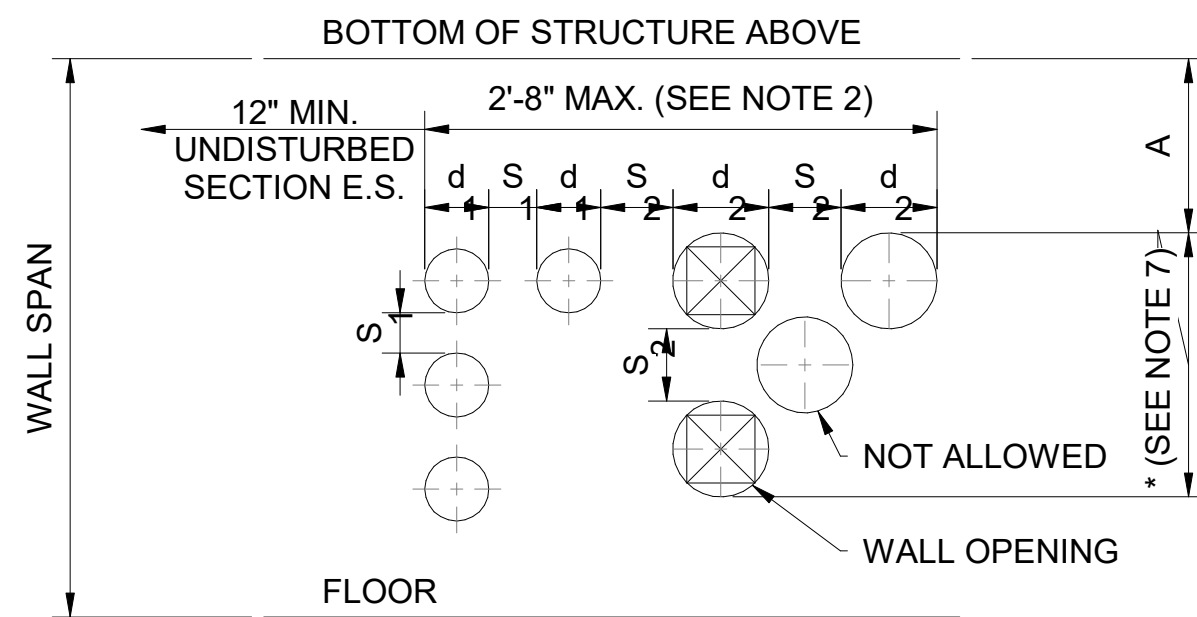
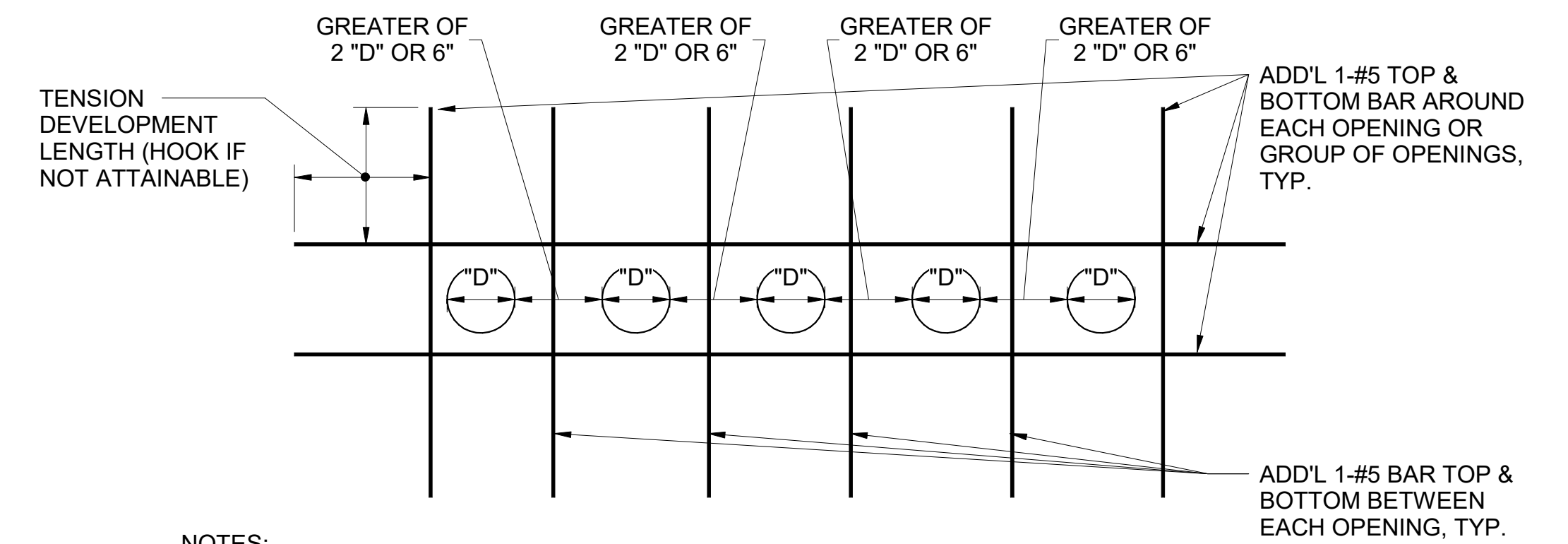


1 TYPICAL FOOTING AT EXTERIOR STAIR
S5.7 NO SCALE



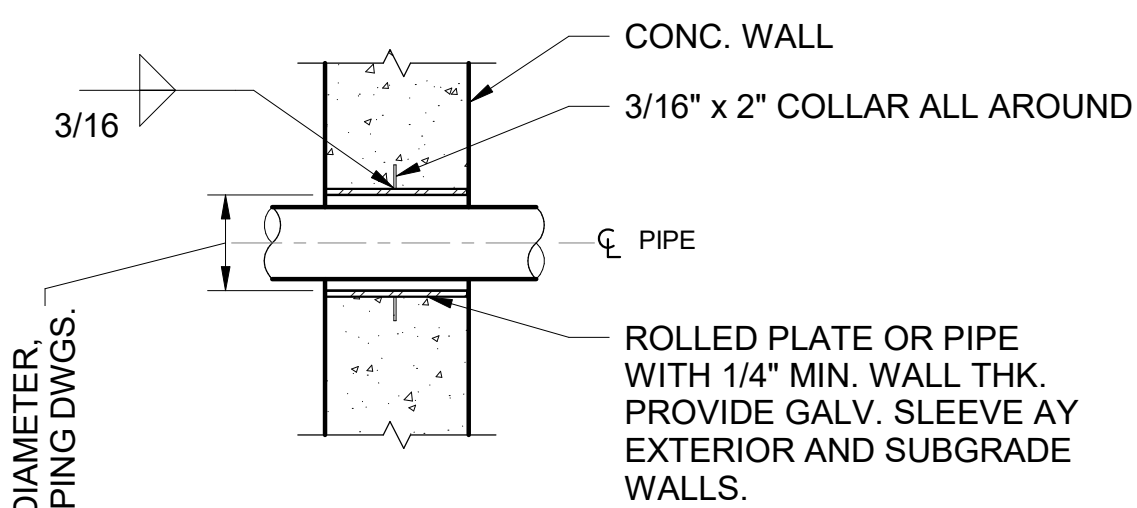
- NOTES:**
- S=1.5d MIN., LARGER d GOVERNS.
 - NO BEAM BEARING ABOVE OPENINGS UNLESS DIMENSION A IS 4'-0" OR LARGER. DIMENSION A IS NOT RESTRICTED FOR CONTINUOUS CONCRETE SLAB BEARING. A=0'-8" MIN. BELOW UNTOPPED DECK.
 - VERTICAL ALIGNMENTS OF STACKED OPENINGS IS REQUIRED. STACKING OPENINGS VERTICAL IN LIEU OF WIDE HORIZONTAL ROWS IS PREFERRED.
 - STEEL LINTELS MUST BE INSTALLED IF ABOVE LAYOUT CANNOT BE ACHIEVED, NOTIFY CONTRACTING OFFICER.
 - MAX. CORE SIZE = 12"
 - * DENOTES NO RESTRICTIONS IN NUMBER IF VERTICALLY ALIGNED
 - LOCATE AND COORDIANTE WALL PENETRATIONS WITH EXISTING WALL REBAR USING GPR OR OTHER NON-DESTRUCTIVE TECHNIQUES

2 TYPICAL CORING RESTRICTIONS IN EXISTING WALL
S5.7 NO SCALE



- NOTES:**
- LIMIT 5 PENETRATIONS IN A ROW IN ANY DIRECTION.
 - COORDINATE WITH TYPICAL DETAIL FOR FORMED CONCRETE SLAB PIPE SLEEVE.
 - SHOULD PENETRATIONS BE CUT AFTER CONCRETE IS POURED, CONTRACTOR TO SUBMIT PLAN SHOWING ALL PROPOSED CORE DRILLING LOCATIONS TO CONTRACTING OFFICER FOR APPROVAL. CONTRACTOR TO USE NDE METHODS TO LOCATE REBAR PRIOR TO CUTTING SLAB.
 - FOR ANY GROUPS OF PENETRATIONS THAT EXCEED THE SPACING OR QUANTITY LIMITS IN THIS DETAIL, GROUP OF PENETRATIONS SHALL BE TREATED AS A SLAB OPENING. SEE "TYPICAL ADDITIONAL REINFORCEMENT AT OPENING IN FRAMED SLAB DETAIL" IN S-500 SERIES.
 - GENERAL CONTRACTOR SHALL PROVIDE COORDINATED MEPS TRADE SUBMITTALS FOR CONTRACTING OFFICER REVIEW OF PENETRATIONS. ALL TRADES SHALL BE OVERLAYED INTO ONE SUBMITTAL TO CAPTURE AND EVALUATE ALL PENETRATIONS THROUGH SLABS TOGETHER.

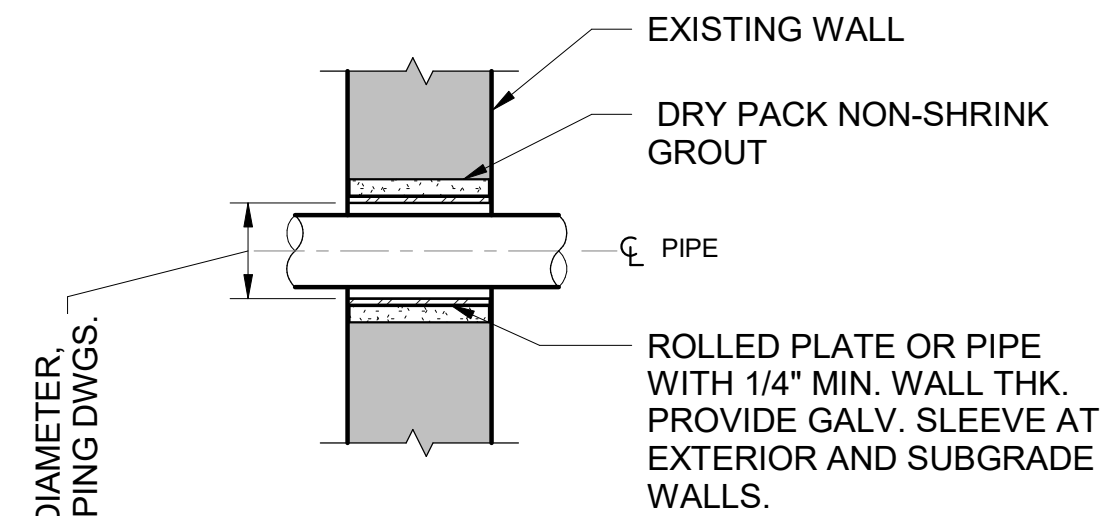
3 TYPICAL SLAB PENETRATION WITH SLEEVE DIAMETER LESS THAN 6"
S5.7 NO SCALE



NOTE: SPACE ADJACENT PIPE SLEEVES AS FOLLOWS:

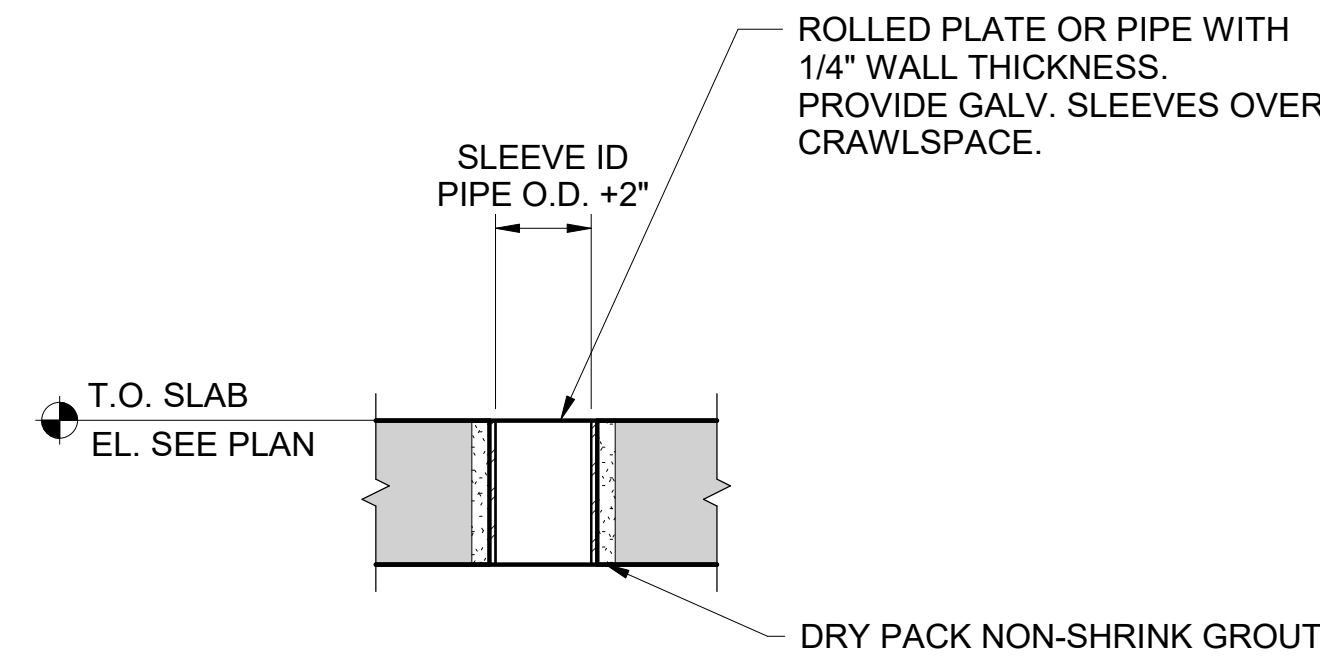
PIPE DIAMETER (OUTSIDE DIA.)	CLEAR DISTANCE BETWEEN EDGES OF PIPE OPENINGS
DIA. ≤ 6"	CLEAR DIST. = PIPE DIA.
6" < DIA. ≤ 12"	CLEAR DIST. = 6"
12" < DIA. ≤ 24"	CLEAR DIST. = WALL THICKNESS

NEW WALL CONDITION



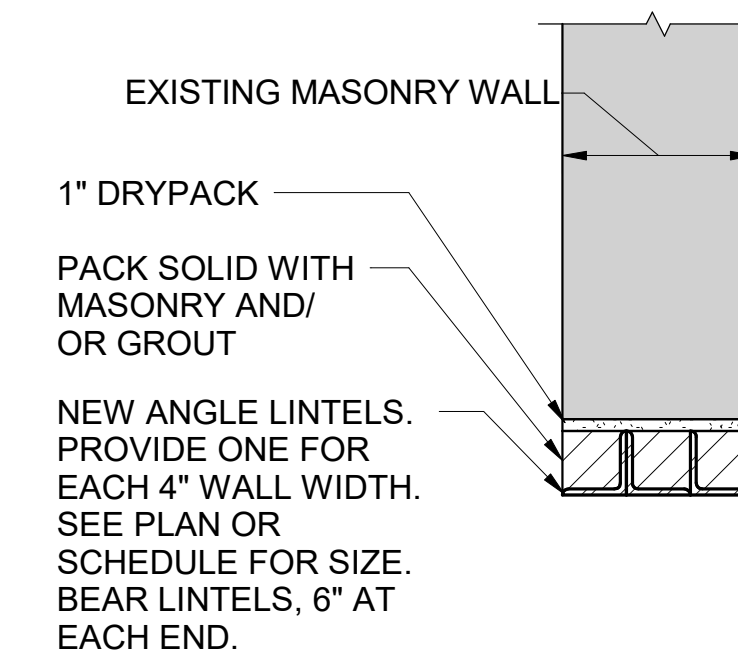
NOTE: SEE DETAIL 2/S5.7 FOR CORING RESTRICTIONS.

EXISTING WALL CONDITION



NOTE: PROVIDE CLEAR SPACE BETWEEN PIPE AND/OR OPENINGS A MINIMUM 6" OR PIPE SLEEVE DIAMETER APART (WHICHEVER IS GREATER.) SEE DETAIL 3/S5.7 FOR ADDITIONAL DIMENSIONAL RESTRICTIONS.

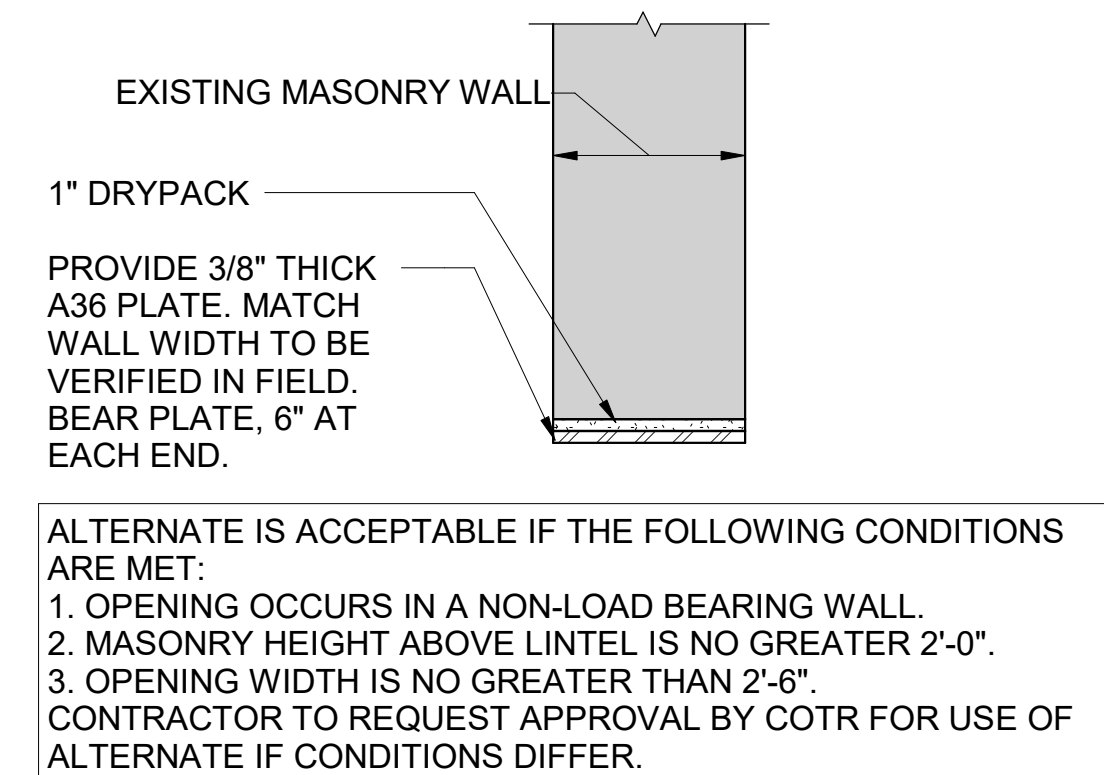
5 TYPICAL PIPE SLEEVE IN CONCRETE SLAB
S5.7 NO SCALE



NOTES:

- CONTRACTOR TO PROVIDE NEEDLE SHORING AS NEEDED FOR NEW LINTEL INSTALLATION.
- CONTRACTOR TO INCLUDE MASONRY IN KIND WHERE DETERIORATED, MISSING, OR REQUIRED FOR REBUILD.
- ALL MASONRY INFILL TO BE PROPERLY TOOTHED IN WITH LIKE MATERIAL.

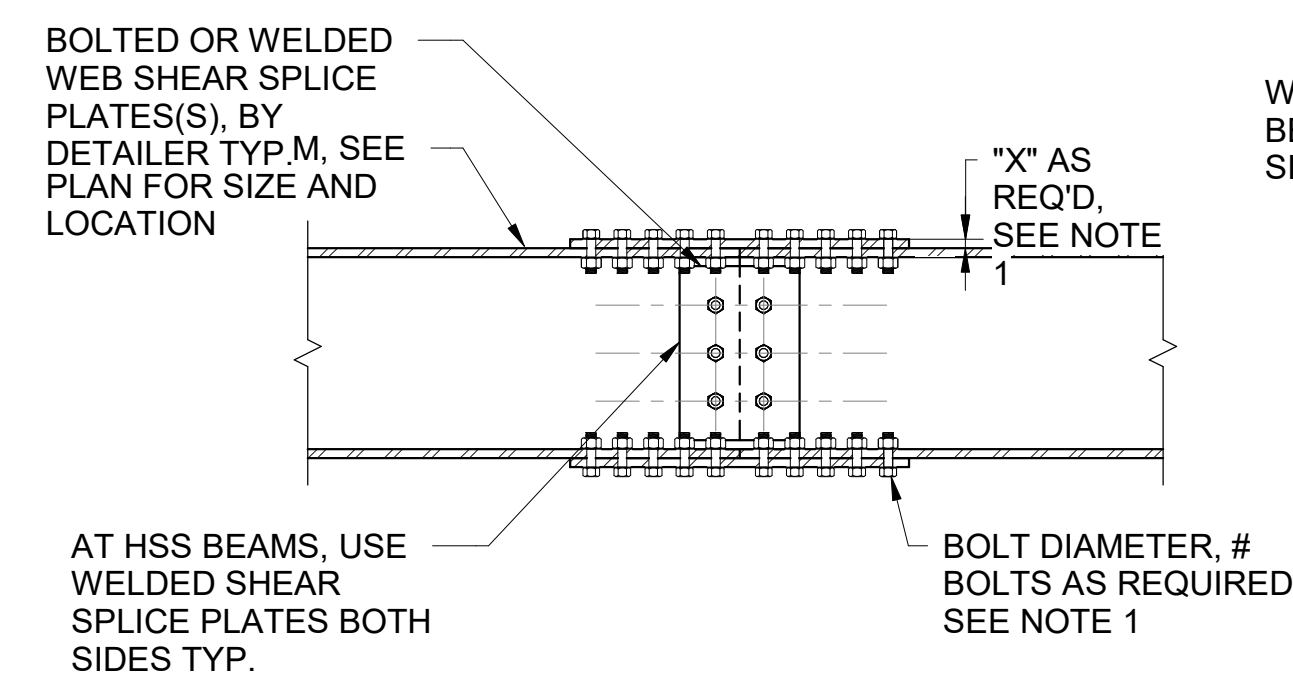
6 TYPICAL ANGLE LINTEL IN EXISTING MASONRY WALL
S5.7 1" = 1'-0"



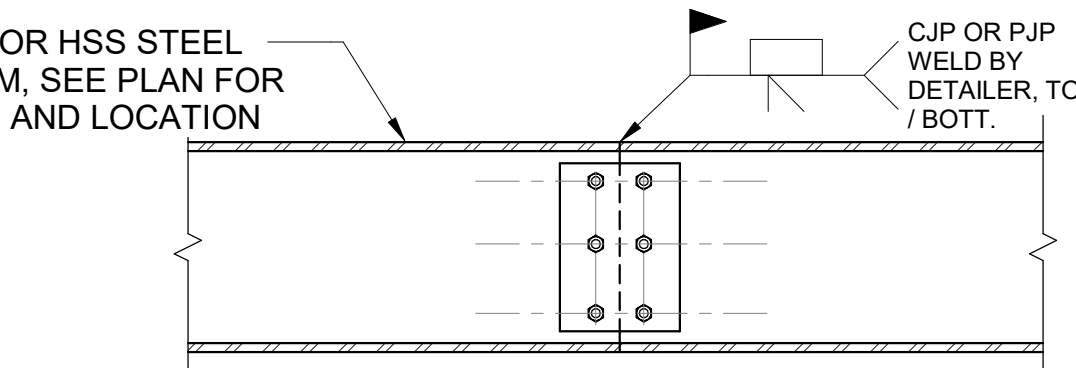
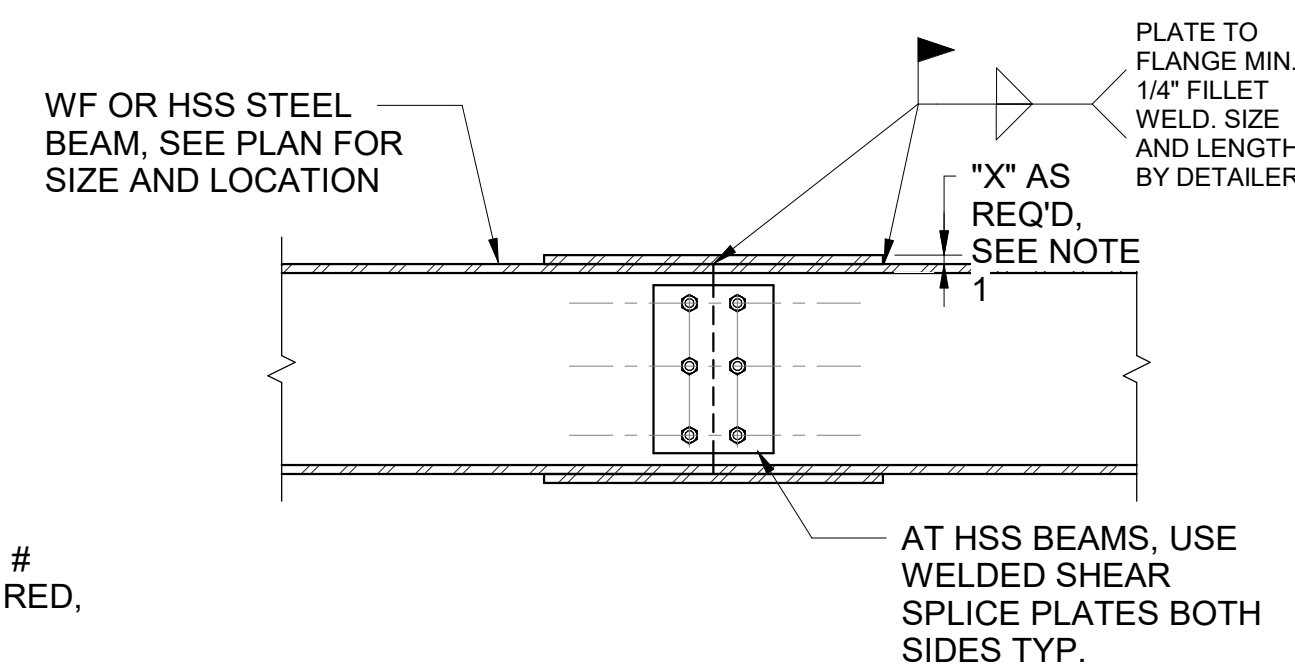
ALTERNATE IS ACCEPTABLE IF THE FOLLOWING CONDITIONS ARE MET:

- OPENING OCCURS IN A NON-LOAD BEARING WALL.
- MASONRY HEIGHT ABOVE LINTEL IS NO GREATER 2'-0".
- OPENING WIDTH IS NO GREATER THAN 2'-6".

CONTRACTOR TO REQUEST APPROVAL BY COTR FOR USE OF ALTERNATE IF CONDITIONS DIFFER.



7 TYPICAL STEEL BEAM SPLICE
S5.7 3/4" = 1'-0"



- NOTES:**
- FLANGE AND WEB SPLICE CONNECTIONS TO BE SELECTED OR ENGINEERED BY DETAILER TO DEVELOP THE FULL CAPACITY OF THOSE BEAM ELEMENTS SIDE OF JOINT.
 - COORDINATE AND SUBMIT SPLICE LOCATIONS TO THE CONTRACTING OFFICER FOR REVIEW AND APPROVAL PRIOR TO FABRICATION.
 - ALL STEEL CONNECTIONS ARE SUBJECT TO SPECIAL INSPECTION INCLUDING ULTRASONIC TESTING OF PJP OR CJP GROOVE WELDS.

A/E FIRMS PRIME/ARCH: STRATA ARCHITECTURE 1703 OAK STREET, SUITE 100 KANSAS CITY, MO T: 816.474.0900	DESIGNED: KH CADD: CM TECH. REVIEW: NH DATE: 10.27.2023	SUB SHEET NO. 01 S5.7	TITLE OF SHEET MAURICE BATHHOUSE TYPICAL DETAILS REHABILITATE BATHHOUSES HOT SPRINGS NATIONAL PARK	DRAWING NO. 128 182951 PMIS/PKG NO. 318915 114 OF 286
--	--	---	---	--

