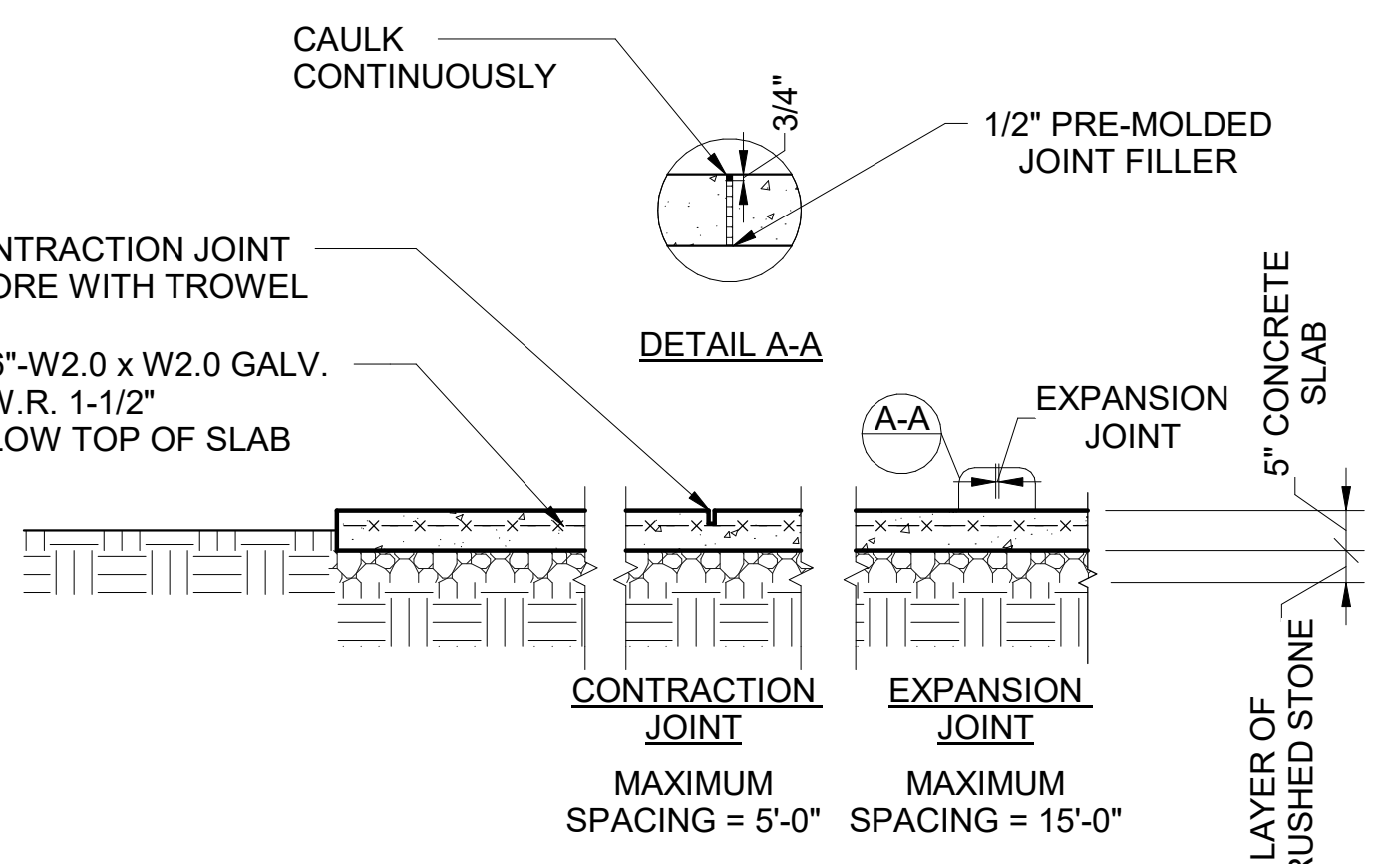
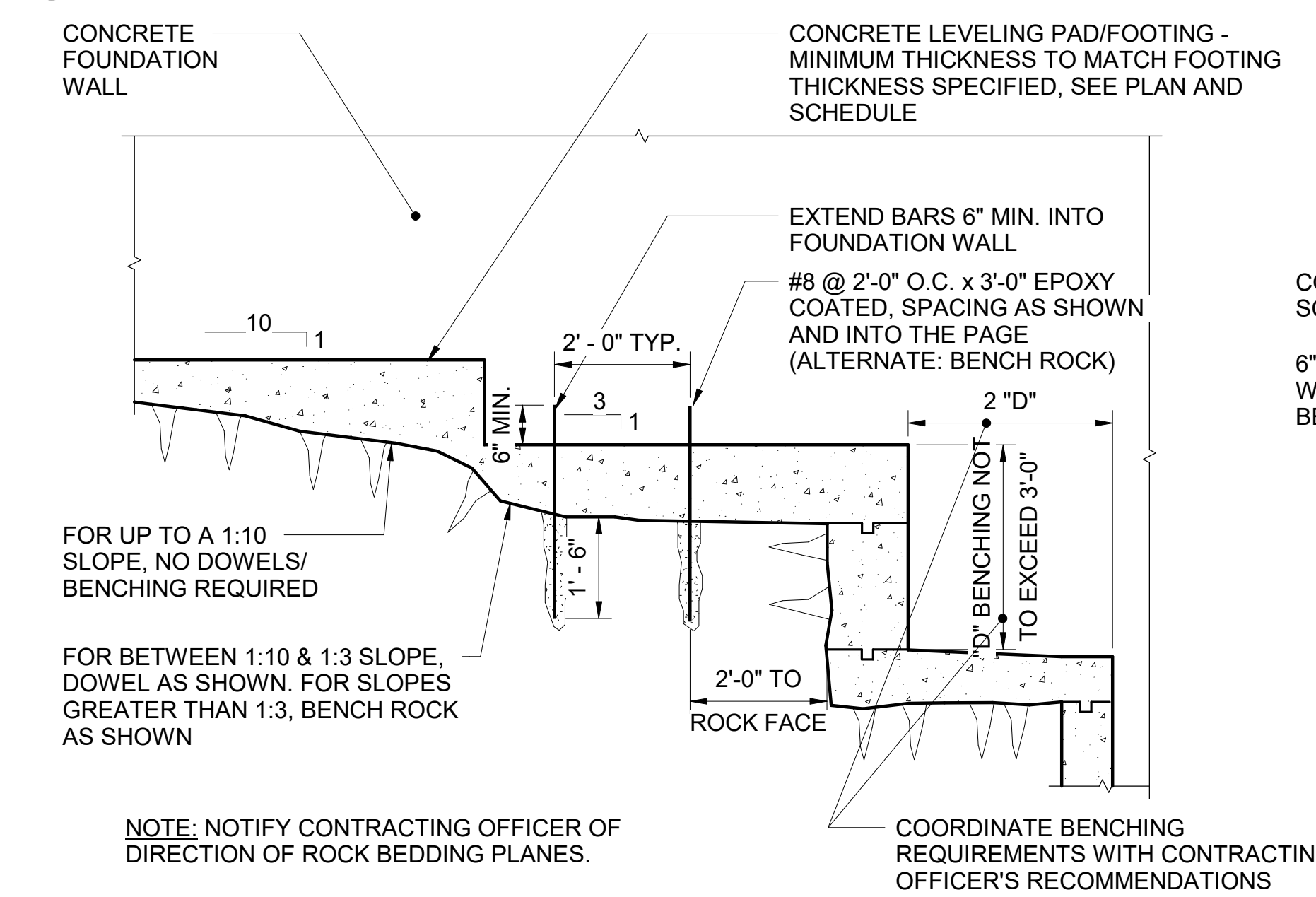
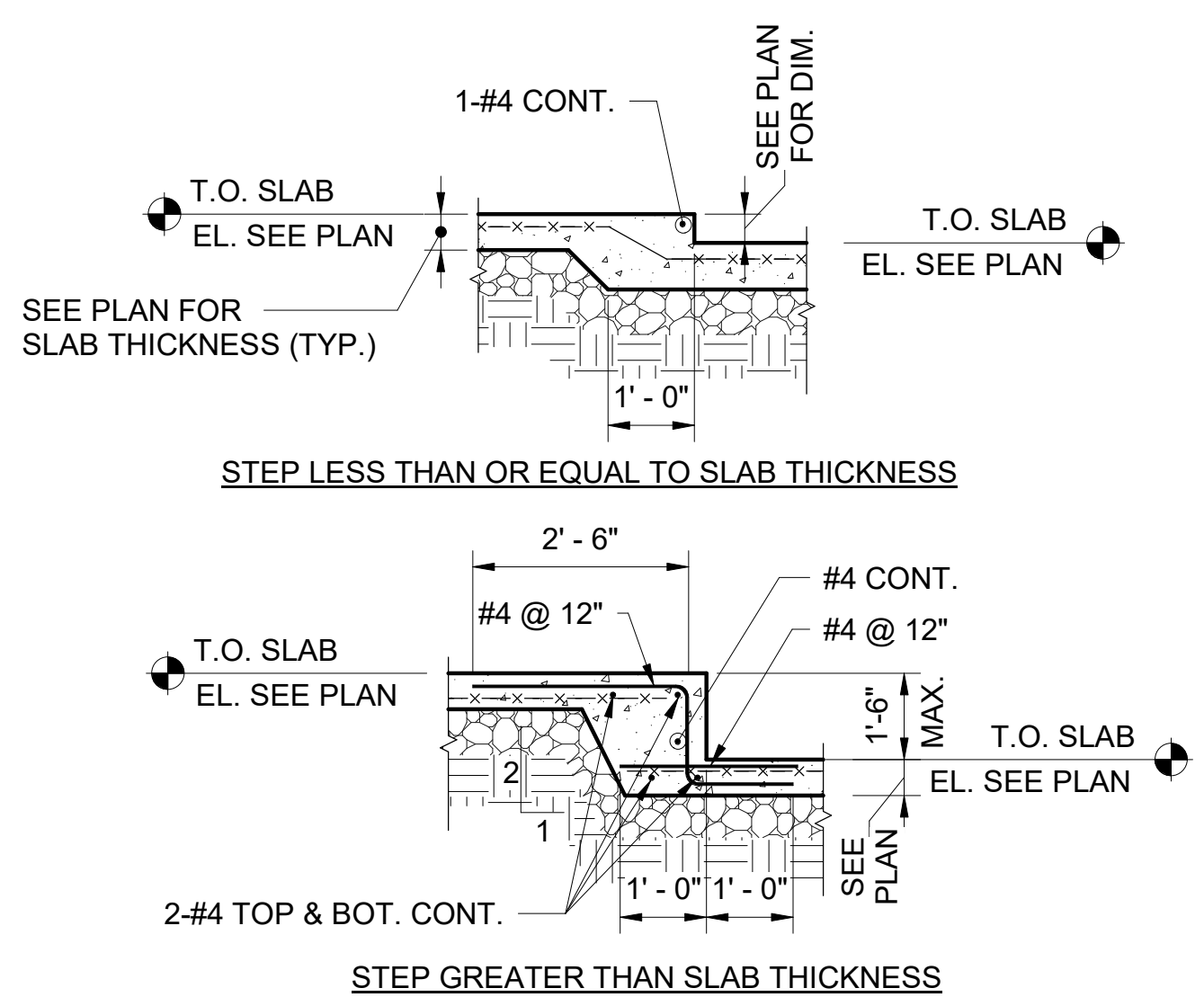


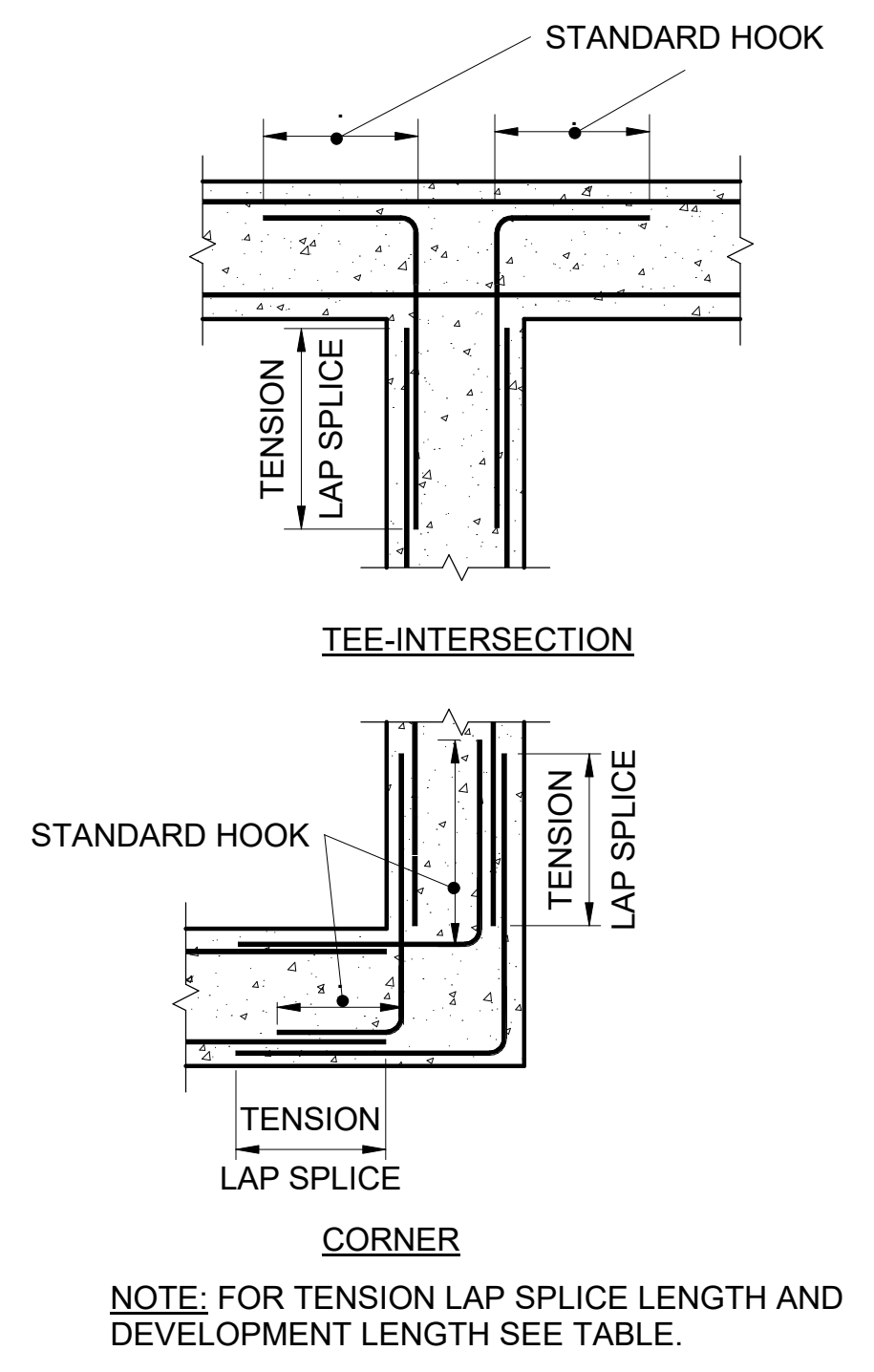
**NOTES:**

1. SLAB ON GRADE SHALL BE PLACED IN ALTERNATING STRIPS WHERE EACH SINGLE STRIP DOES NOT EXCEED 36 TIMES SLAB THICKNESS WIDTH IN INCHES. ALTERNATIVELY, LARGE BLOCK PLACEMENTS WITH INTERIOR CONTRACTION JOINTS ARE ACCEPTABLE IF THE CONTRACTION JOINTS ARE MADE IN BOTH DIRECTIONS AT SPECIFIED INTERVALS IN A TIMELY MANNER.
2. SAWED CONTRACTION JOINTS SHALL BE LOCATED AT A MAXIMUM SPACING IN INCHES OF 36 TIMES THE SLAB THICKNESS. JOINTS SHALL BE MADE NO LATER THAN 24 HOURS AFTER CONCRETE IS PLACED.
3. GRAVEL OR CRUSHED STONE BASE SHALL BE COMPACTED TO 95% OF MAXIMUM DENSITY AT OPTIMUM MOISTURE CONTENT.



**NOTES:**

1. UNDISTURBED SOIL OR FILL COMPACTED TO 95% OF MAXIMUM DENSITY AT OPTIMUM MOISTURE CONTENT REMOVE ORGANIC MATERIAL.
2. BROOM FINISH UNLESS NOTED OTHERWISE.

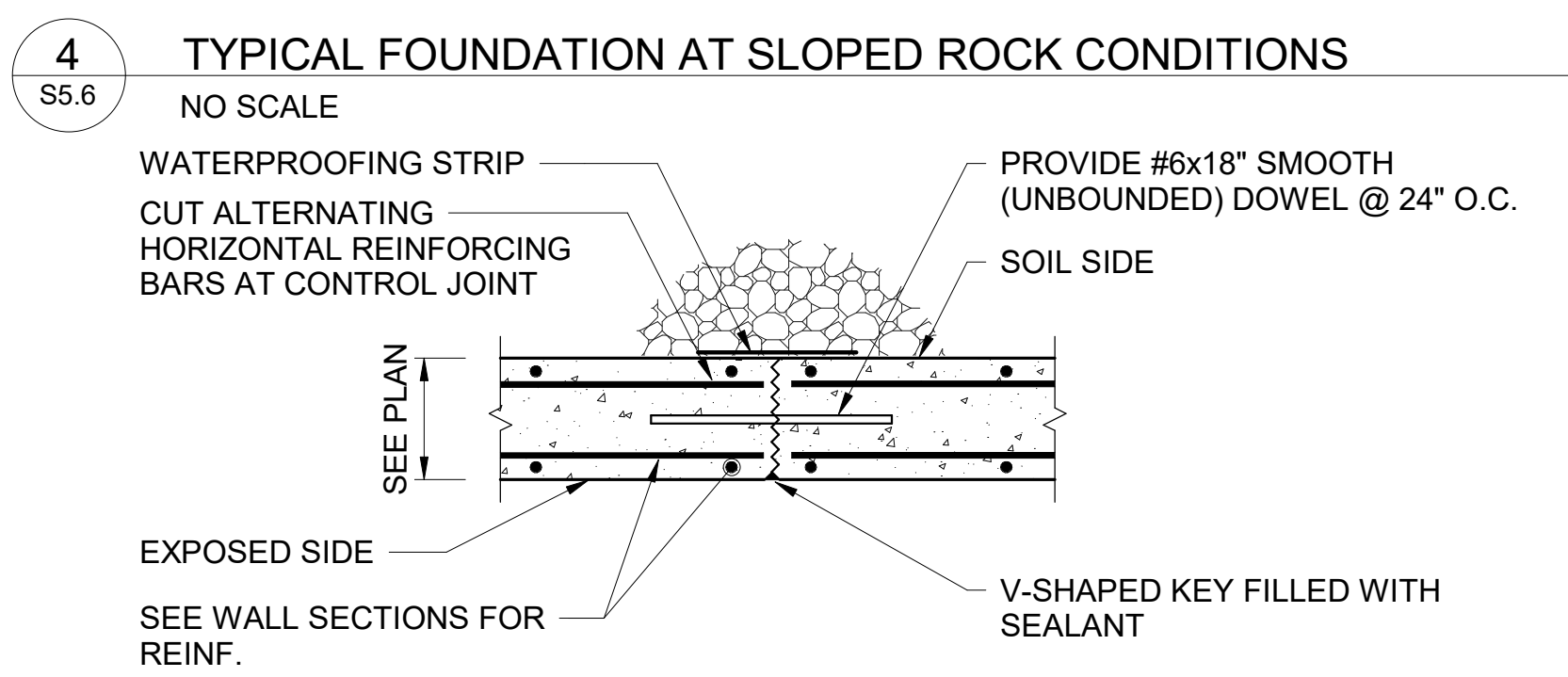
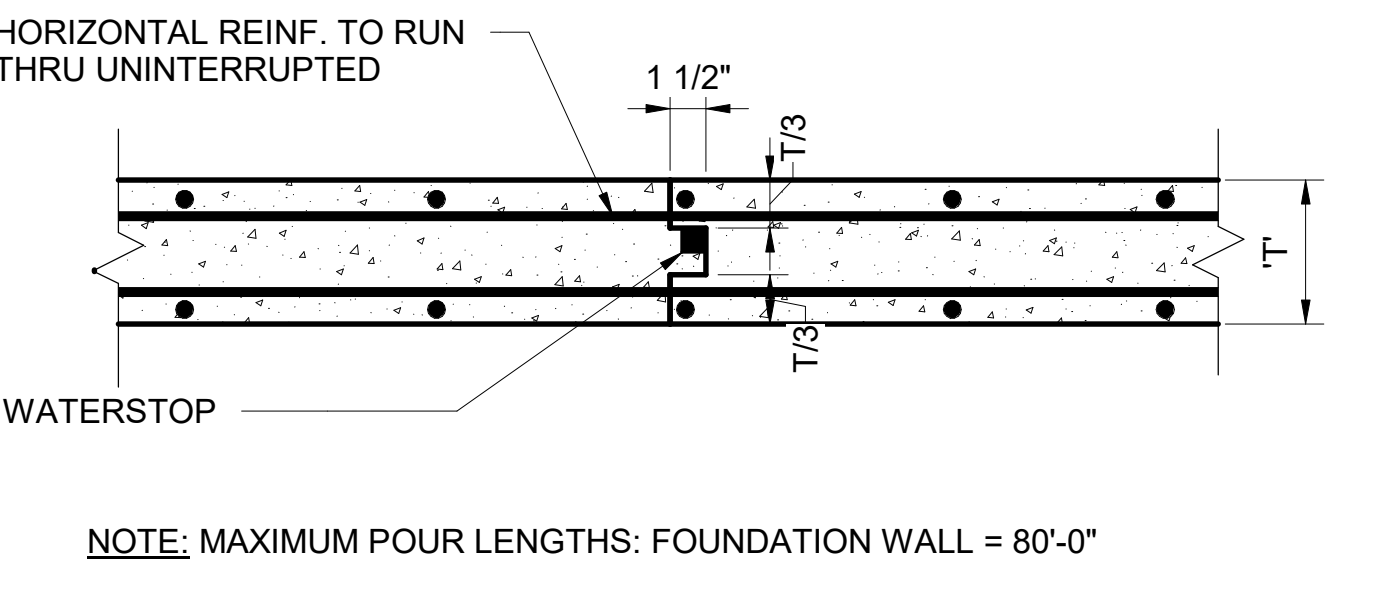


**9 TYPICAL HORIZONTAL REINFORCEMENT AT CORNERS & JUNCTIONS OF WALLS AND BEAMS**  
NO SCALE

**NOTES:**

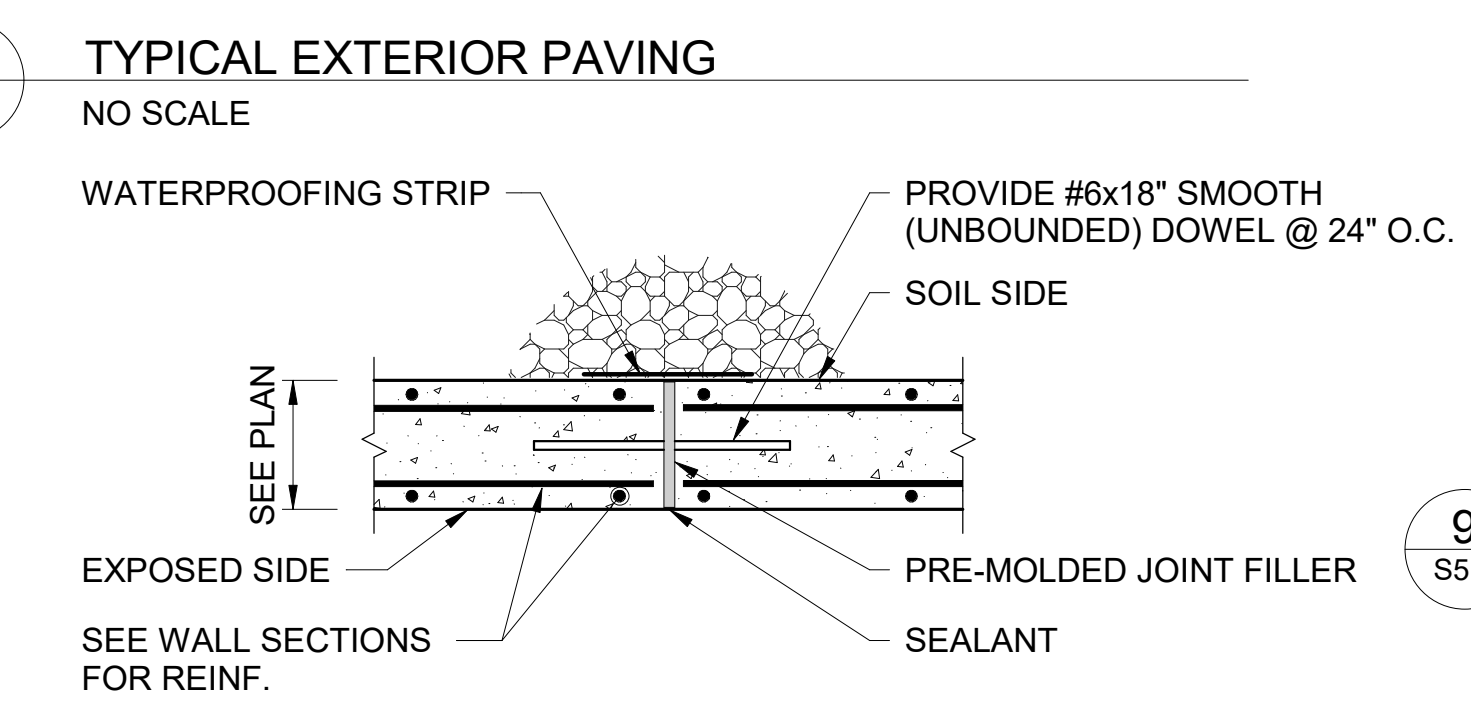
1. FOR SIZE AND LOCATION SEE ARCHITECTURAL AND MECHANICAL DRAWINGS.
2. CONCRETE FOR PADS SHALL BE NORMAL WEIGHT WITH  $f_c = 4000$  PSI
3. THREADED RODS TO BE 3/8" Ø A-36 STEEL IN EXPANSION INSERTS @ 18" O.C. HY-200 ADHESIVE OR APPROVED EQUAL.

**6 TYPICAL EQUIPMENT PAD ON GRADE (EXTERIOR)**  
NO SCALE



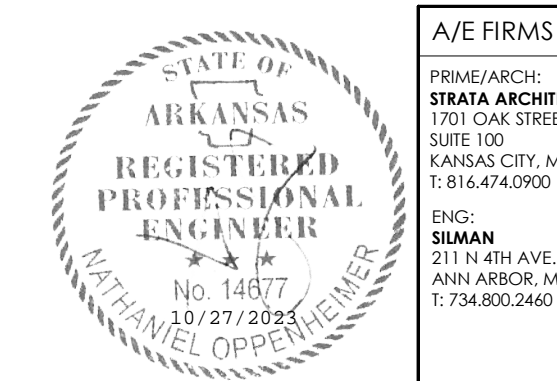
**NOTES:**

1. PROVIDE CONTROL JOINTS AT A MAXIMUM OF 20 FEET O.C. AND AT ALL CORNERS.
2. SEE TYPICAL WALL DETAIL AND ARCH. FOR WATERPROOFING AND DRAINAGE REQUIREMENTS



**NOTES:**

1. PROVIDE EXPANSION JOINTS AT EVERY FOURTH CONTROL JOINT OR A MAXIMUM OF 80 FEET O.C.
2. SEE TYPICAL WALL DETAIL AND ARCH. FOR WATERPROOFING AND DRAINAGE REQUIREMENTS



|  |                     |
|--|---------------------|
| A/E FIRMS<br>PRIME/ARCH:<br>STRATA ARCHITECTURE<br>1703 OAK STREET,<br>SUITE 100<br>KANSAS CITY, MO<br>T: 816.474.0900 | DESIGNED:<br>KH     |
| ENG:<br>SILMAN<br>211 N 48TH AVE.<br>ANN ARBOR, MI<br>T: 734.800.2440  | CADD:<br>CM         |
|  | TECH. REVIEW:<br>NH |
|  | DATE:<br>10.27.2023 |

SUB SHEET NO.  
**01**  
**S5.6**

|  |  |
|--|--|
| TITLE OF SHEET<br><b>MAURICE BATHHOUSE</b><br><b>TYPICAL DETAILS</b> | DRAWING NO.<br><b>128</b><br><b>182951</b> |
| REHABILITATE BATHHOUSES<br>HOT SPRINGS NATIONAL PARK                 | PMIS/PKG NO.<br>318915                     |
|  | 113 OF 286                                 |