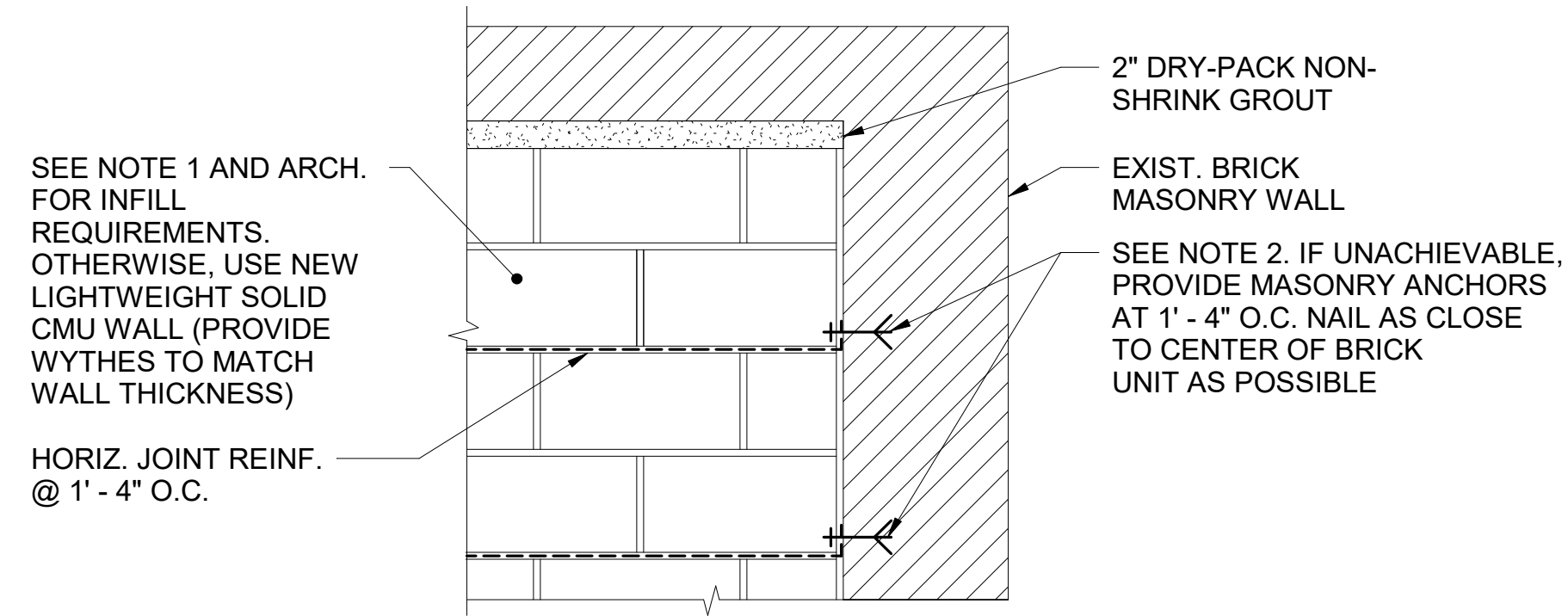


NOTES:

1. [Hatched symbol] DENOTES BRICK TO BE REPLACED. WHERE CRACK IS THRU WALL REPLACE ALL WYTHES OF BRICK ON EACH SIDE OF CRACK TO 1ST MORTAR JOINT. REPLACE EXISTING HEADERS WITH NEW HEADERS. REPLACE LOOSE AND CRACKED BRICKS. WHERE CRACK IS ONLY IN OUTER WYTHE, REPLACE ONLY OUTER WYTHE.
2. WHERE CRACK IS OPEN AND 1/4" OR LESS AND IS PRESENT ONLY IN OUTER WYTHE AND ONLY IN JOINTS, RAKE AND REPOINT JOINTS ONLY.
3. CONTRACTOR TO INCLUDE MASONRY IN KIND WHERE DETERIORATED, MISSING, OR REQUIRED FOR REBUILD.
4. ALL MASONRY INFILL TO BE PROPERLY TOOTHED IN WITH LIKE MATERIAL.

TYPICAL REPAIR IN BRICK MASONRY (KEYNOTE M-1)

1
S5.5
NO SCALE

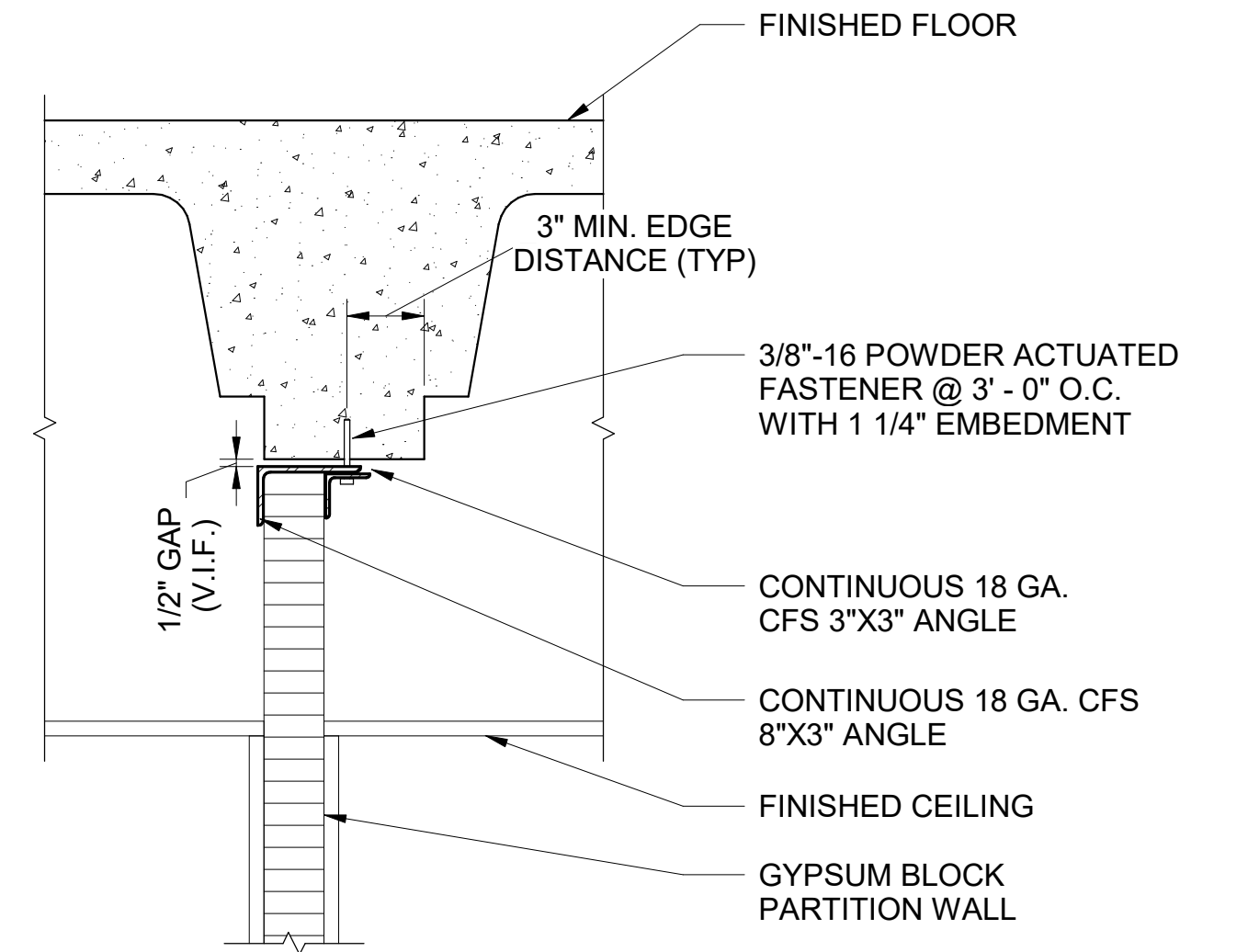


NOTES:

1. CONTRACTOR TO INCLUDE MASONRY IN KIND WHERE DETERIORATED, MISSING, OR REQUIRED FOR REBUILD.
2. ALL MASONRY INFILL TO BE PROPERLY TOOTHED IN WITH LIKE MATERIAL.

TYPICAL WALL INFILL DETAIL (KEYNOTE M-2)

2
S5.5
NO SCALE

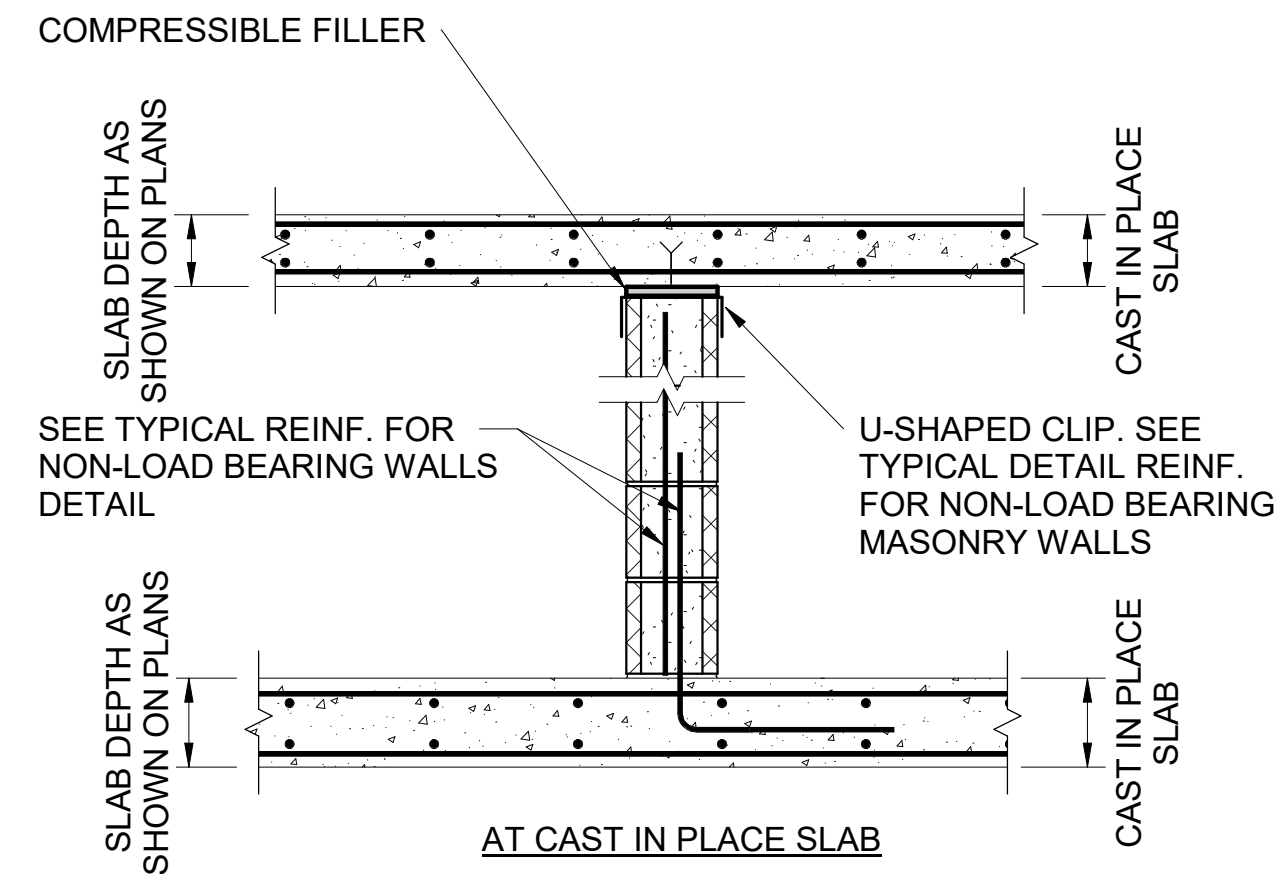


NOTES:

1. GAP ASSUMED AT TOP OF WALL BASED ON SITE OBSERVATIONS. IF GAP DOES NOT EXIST, INSTALL A CONT. 18 GA. 6" CFS PLATE AGAINST THE SURFACE OF THE GYPSUM BLOCK WALL AND CONCRETE BEAM. ANCHOR PLATE INTO CONCRETE USING 3/8"-16 POWDER ACTUATED FASTENERS @ 3'-0" O.C. WITH 1 1/4" EMBEDMENT.
2. CONTRACTOR TO INCLUDE MASONRY IN KIND WHERE DETERIORATED, MISSING, OR REQUIRED FOR REBUILD.
3. ALL MASONRY INFILL TO BE PROPERLY TOOTHED IN WITH LIKE MATERIAL.

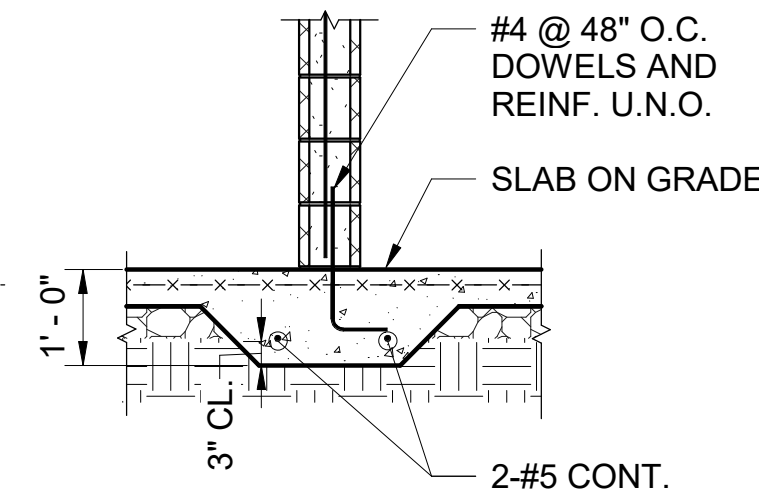
LATERAL BRACING AT TOP OF INTERIOR MASONRY PARTITION WALL AT CONCRETE BEAM TYPICAL DETAIL

3
S5.5
NO SCALE



TYPICAL SUPPORT FOR MASONRY PARTITIONS AT CONCRETE SLAB

4
S5.5
NO SCALE



NOTE: SEE TYPICAL SLAB ON GRADE DETAIL FOR ADDITIONAL INFORMATION.

TYPICAL SUPPORT FOR MASONRY PARTITIONS AT SLAB ON GRADE

5
S5.5
NO SCALE



A/E FIRMS PRIME/ARCH: STRATA ARCHITECTURE 1703 OAK STREET, SUITE 100 KANSAS CITY, MO T: 816.474.0900 ENG: SILMAN 211 N 4TH AVE. ANN ARBOR, MI T: 734.800.2460	DESIGNED: KH	SUB SHEET NO. 01 S5.5	TITLE OF SHEET MAURICE BATHHOUSE TYPICAL MASONRY REPAIR DETAILS REHABILITATE BATHHOUSES HOT SPRINGS NATIONAL PARK	DRAWING NO. 128 182951
	CADD: CM			PMIS/PKG NO. 318915
	TECH. REVIEW: NH			112 OF 286
	DATE: 10.27.2023			