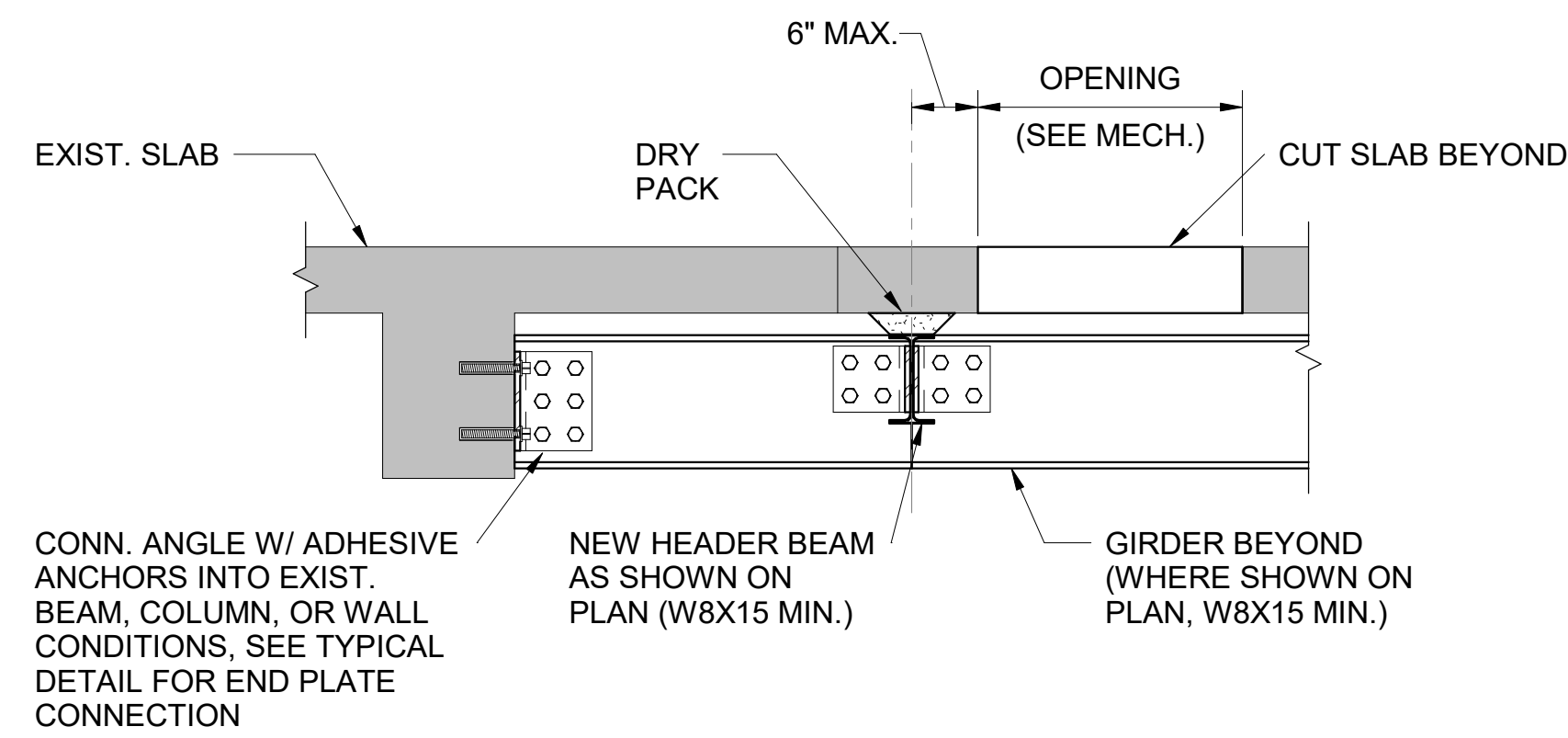


STEEL COATINGS NOTES - KEYNOTE S-1

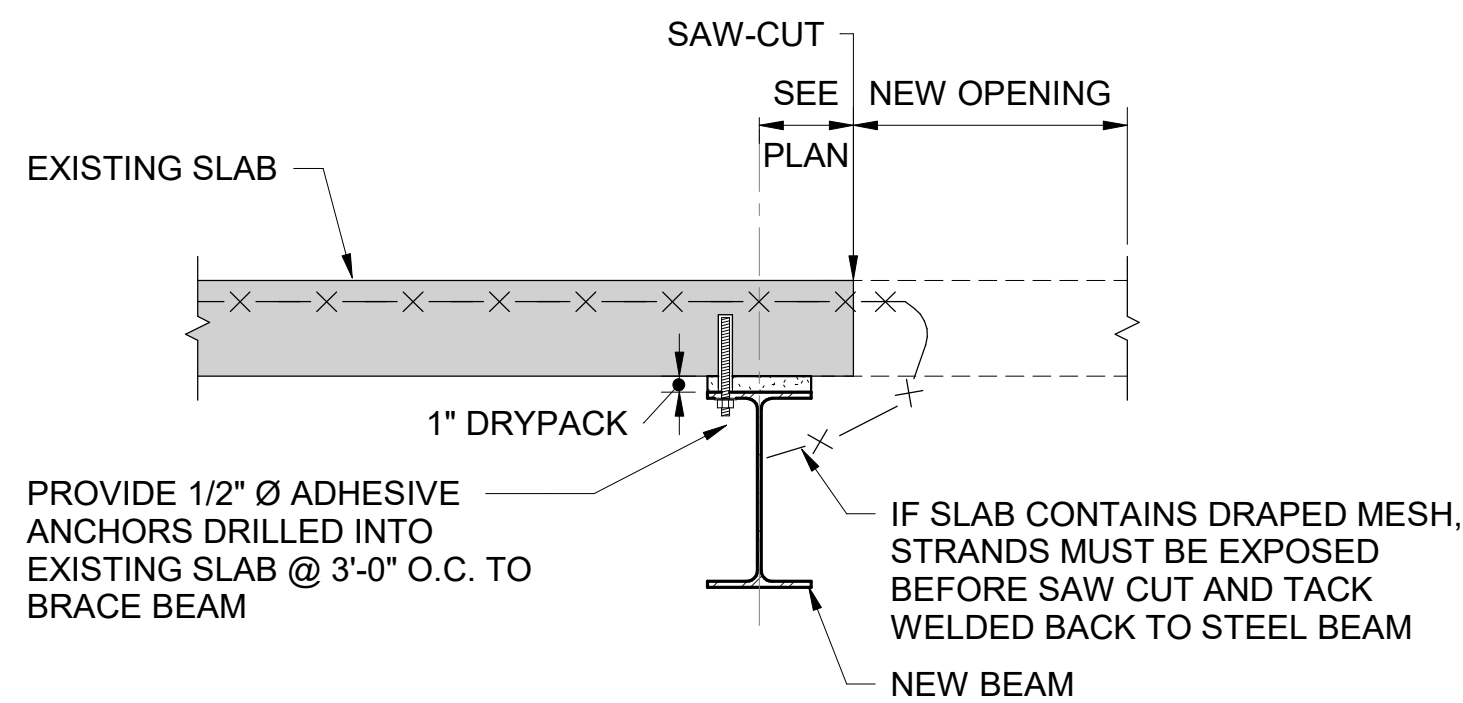
1. **STEEL PREPARATION**
 - A. PREPARE STEEL SURFACES. REFER TO ARCHITECTURAL SPECIFICATION FOR PREPARATION AND COATING REQUIREMENTS.
2. **COATINGS**
 - A. PROVIDE COATINGS ON PREPARED STEEL SURFACES AS INDICATED. REFER TO ARCHITECTURAL SPECIFICATION FOR PREPARATION AND COATING REQUIREMENTS. ALL EXPOSED STEEL SHALL BE PAINTED.
 - a. PROVIDE ALL COATS OF PAINTING SYSTEMS, INCLUDING PRIMERS AND FINISH COATS AS A COATING SYSTEM PRODUCED BY THE SAME MANUFACTURER TO ENSURE COMPATIBILITY AND OPTIMUM PERFORMANCE.
3. **COATINGS SUBMITTALS**
 - A. BEFORE PAINT MATERIALS ARE DELIVERED TO SITE, SUBMIT MANUFACTURER'S PUBLISHED TECHNICAL DATA FOR EACH PRODUCT PROPOSED FOR USE IN WORK OF THIS SECTION INCLUDING MATERIAL DESCRIPTION, CHEMICAL COMPOSITION (INGREDIENTS AND PROPORTIONS), PHYSICAL PROPERTIES, RECOMMENDATIONS FOR APPLICATION AND USE, TEST REPORTS AND CERTIFICATES VERIFYING THAT PRODUCT COMPLIES WITH SPECIFIED REQUIREMENTS, AND MATERIAL SAFETY DATA SHEETS (MSDS).
4. **APPLICATION**
 - A. COATINGS ARE TO BE APPLIED USING BRUSHES BY ONLY SKILLED JOURNEYMAN PAINTERS. DO NOT USE ROLLER, SPRAY, OR OTHER APPLICATORS UNLESS SPECIFICALLY APPROVED BY CONTRACTING OFFICER IN WRITING.
 - B. DO NOT APPLY PAINT, OR OTHER STEEL COATINGS OVER DIRT, RUST, SCALE, GREASE, MOISTURE, SCUFFED SURFACES, OR CONDITIONS DETRIMENTAL TO FORMATION OF A DURABLE PAINT FILM.
 - C. COMPLY WITH SPECIFIED REQUIREMENTS AND MANUFACTURER'S RECOMMENDATIONS CONCERNING AMBIENT TEMPERATURES PRIOR TO, DURING, AND FOLLOWING APPLICATION OF COATINGS INDICATED.
 - D. DO NOT APPLY SUCCEEDING COATS UNTIL PREVIOUS COAT HAS CURED AS RECOMMENDED BY MANUFACTURER. SAND BETWEEN COATS WHERE SANDING IS REQUIRED TO PRODUCE A SMOOTH EVEN SURFACE ACCORDING TO MANUFACTURER'S DIRECTIONS.
 - E. APPLY MATERIALS NO THINNER THAN MANUFACTURER'S RECOMMENDED SPREADING RATE. PROVIDE TOTAL DRY FILM THICKNESS OF ENTIRE SYSTEM AS RECOMMENDED BY MANUFACTURER.
 - F. PAINT PATCHES AT LOCATIONS FROM WHICH ANCHORS ARE REMOVED FROM LOCATIONS WITH PAINTED SURFACES AS SCAFFOLDING IS DISMANTLED WITH FULL COATING SYSTEM (PRIME COAT AND FINISH COATS) TO MATCH ADJACENT SURFACE.
 - G. PROTECT ALL MATERIALS AND FINISHES AGAINST DAMAGE CAUSED BY PAINTING AND FINISHING WORK. CORRECT DAMAGE BY CLEANING, REPAIRING OR REPLACING, AND REPAINTING, AS ACCEPTABLE TO CONTRACTING OFFICER.

STEEL REPAIR NOTES - KEYNOTE S-1

1. THE CONTRACTOR MUST VERIFY FIELD CONDITIONS DURING STEEL SURFACE PREPARATION WORK. EXACT LOCATIONS AND DETAILS FOR STEEL REPAIRS WILL BE DETERMINED IN THE FIELD DURING CONSTRUCTION. SEE PROCEDURE BELOW FOR RECOMMENDED SEQUENCE FOR CONTRACTOR TO PROVIDE INFORMATION TO CONTRACTING OFFICER NECESSARY TO EVALUATE AND SPECIFY TYPE AND EXTENT OF CONSTRUCTION DETAIL REPAIRS.
2. **PROCEDURE**
 - A. THE FOLLOWING SEQUENCE DESCRIBES THE EXPECTED PROCEDURE AT EXPOSED STEEL MEMBERS:
 - a. REMOVE ALL SCALING AND PACK RUST FROM EXPOSED MEMBERS PER SPECIFICATIONS. AT MINIMUM, RUST SCALE SHALL BE REMOVED PER SSPC SP-3 "POWER TOOL CLEAN" AND GREASE OR OIL SHALL BE REMOVED PER SSPC SP-1 "SOLVENT CLEAN." SEE "NOTES - STEEL COATINGS" AND DETAILS FOR ADDITIONAL REQUIREMENTS.
 - b. EXPOSED STEEL SHALL BE REVIEWED FOR STRUCTURAL ADEQUACY BY THE CONTRACTING OFFICER IF A STEEL MEMBER IS FOUND TO HAVE SECTION LOSS GREATER THAN 5%.
 - c. REINFORCE MEMBER IF REQUIRED AS DIRECTED BY THE CONTRACTING OFFICER. AT AREAS OF THROUGH-MEMBER CORROSION, CUT DETERIORATED MATERIAL BACK TO SOUND MATERIAL TO PERMIT WELDING OF REINFORCEMENT.
 - d. AFTER COMPLETION OF ALL REMEDIAL WORK, PREPARE AND PAINT EXPOSED STEEL SURFACES PER "NOTES - STEEL COATINGS". SURFACES TO BE ENCASED IN CONCRETE REQUIRE CLEANING BUT NEED NOT BE PAINTED.

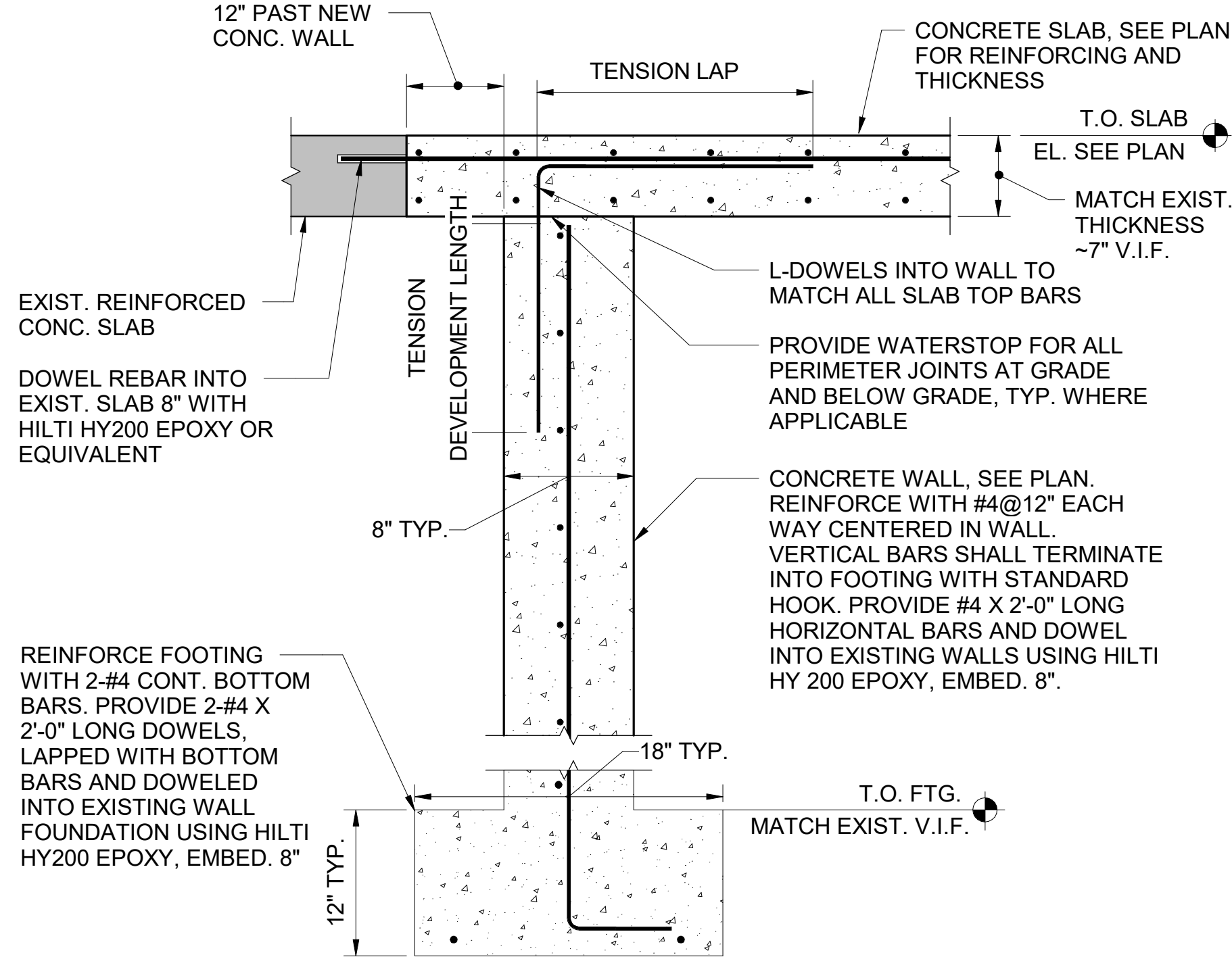


1 TYPICAL STEEL REINFORCING AT MECH. FLOOR PENETRATIONS
S5.4 NO SCALE

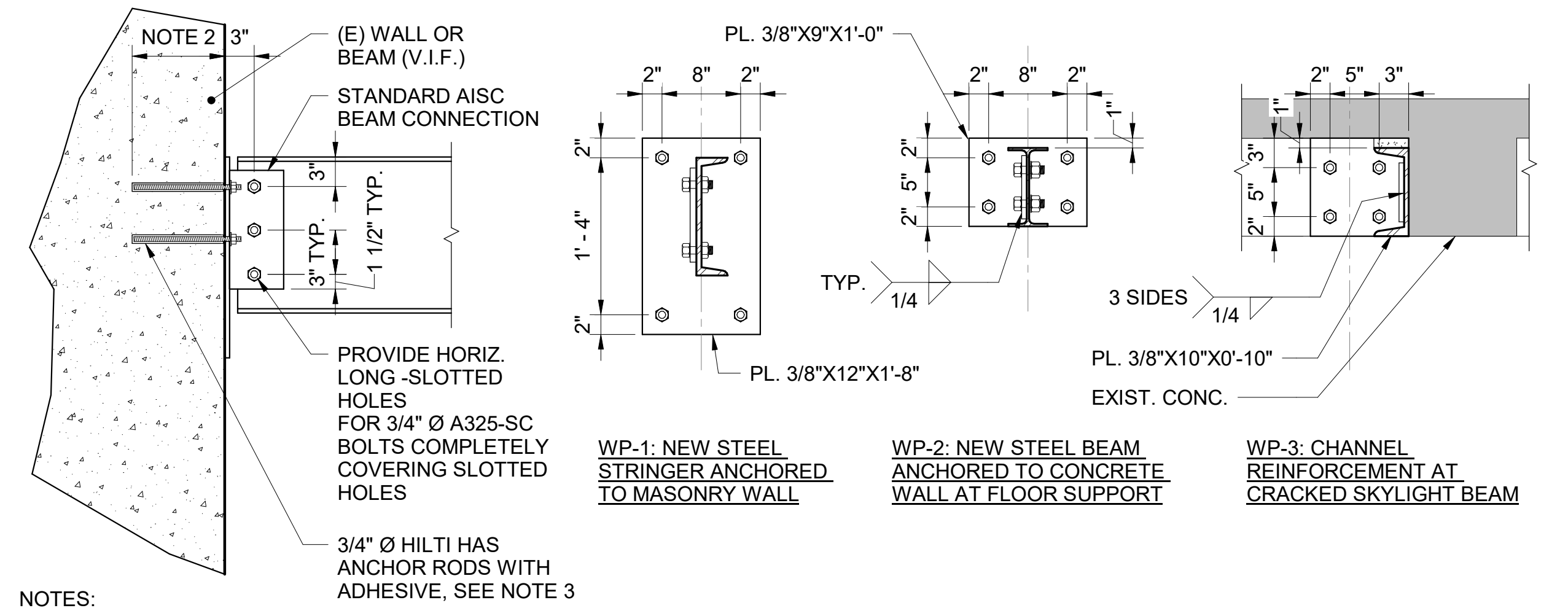


- CONSTRUCTION SEQUENCE NOTE:**
1. ERECT BEAM AND DRYPACK. DRYPACK SHALL BE (1) PART CEMENT + (2) PART SAND AND HAVE ZERO SLUMP.
 2. AFTER DRYPACKING HAS CURED, SAW-CUT PERIPHERY OF OPENING AND REMOVE CONCRETE WITHIN SO AS NOT TO DAMAGE REMAINING FINISHES AND STRUCTURE.

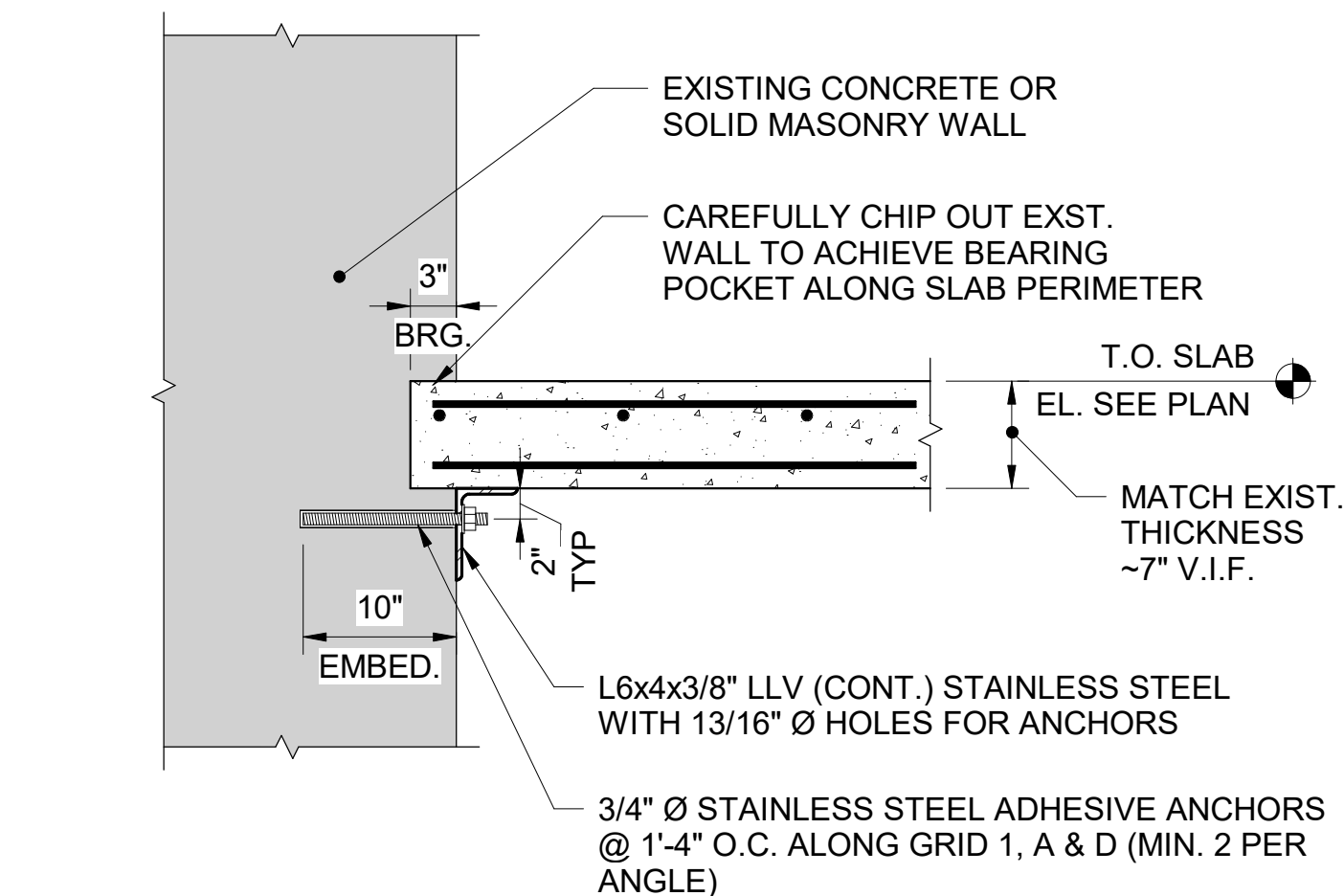
3 TYPICAL BEAM DRYPACKED BELOW EXISTING SLAB AT NEW OPENING
S5.4 NO SCALE



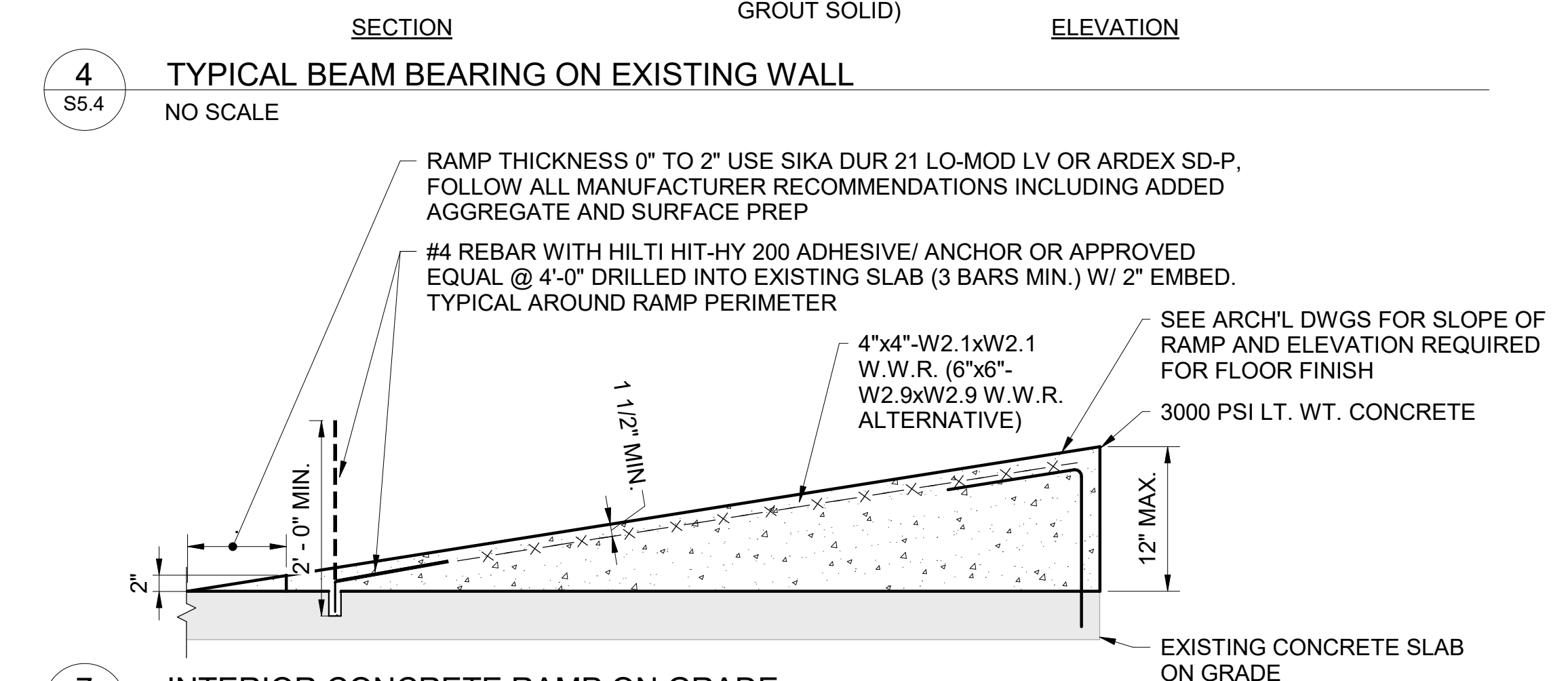
4 TYPICAL BEAM BEARING ON EXISTING WALL
S5.4 NO SCALE



5 INTERIOR CONCRETE RAMP ON GRADE
S5.4 NO SCALE



6 TYPICAL SHELF ANGLE AT EXISTING LOAD BEARING WALL
S5.4 NO SCALE



7 TYPICAL SHELF ANGLE AT EXISTING LOAD BEARING WALL
S5.4 NO SCALE

	A/E FIRMS PRIME/ARCH: STRATA ARCHITECTURE 1703 OAK STREET, SUITE 100 KANSAS CITY, MO T: 816.474.0900	DESIGNED: KH	SUB SHEET NO. <h1>01</h1> <h1>S5.4</h1>	TITLE OF SHEET MAURICE BATHHOUSE TYPICAL STEEL REPAIR DETAILS REHABILITATE BATHHOUSES HOT SPRINGS NATIONAL PARK	DRAWING NO. 128 182951
	ENG: SILMAN 211 N 48TH AVE. ANN ARBOR, MI T: 734.800.2440	CADD: CM			PMIS/PKG NO. 318915
	TECH. REVIEW: NH	DATE: 10.27.2023			111 OF 286