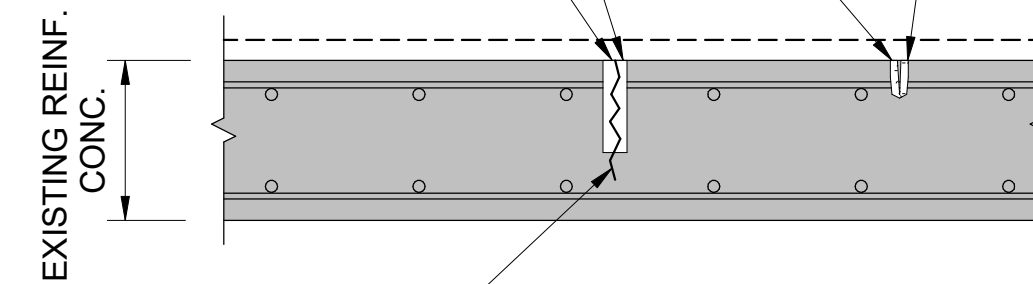


3/8" DIA. PLASTIC THREADED PORTS AT 2'-0" O.C. FOR INJECTION OF EPOXY GEL (ALT: USE FUNNELS OR BRUSHES FOR APPLYING EPOXY FILLER PER MANUFACTURERS' RECOMMENDATIONS.)

SOUND SURFACE CRACKS (CONCRETE DOES NOT SPALL OFF WITH MODERATE HAMMERING): ROUTE CRACK TO A MIN WIDTH OF 1/2" AND MIN. DEPTH OF 3/4", CLEAN AND INJECT WITH EPOXY GEL*

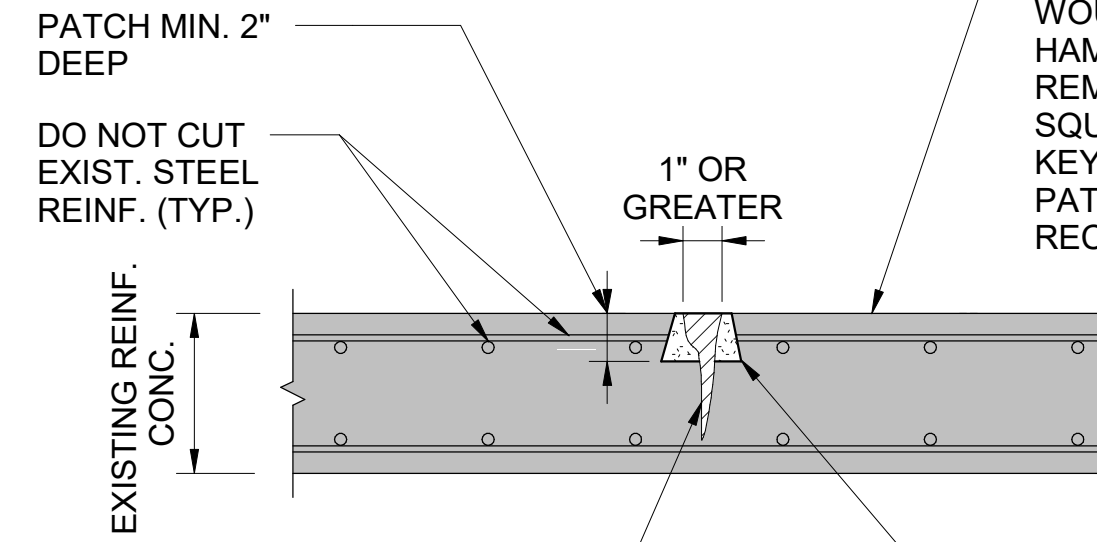


EXISTING SURFACE CRACK, SEE ELEVATION FOR APPROXIMATE LOCATIONS V.I.F. ACTUAL SIZE AND EXTENT

NOTE: FOR CRACKS SMALLER THAN 1/8" IN WIDTH/THICKNESS, NO REPAIR NECESSARY. FOR CRACKS LARGER THAN 1" IN WIDTH/THICKNESS, SEE DETAIL 2/S5.3

*EPOXY GEL SHALL BE SIKADUR 35 HI-MOD LV OR APPROVED EQUAL. CONTRACTOR SHALL SUBMIT SPECIFICATIONS OF ALL PRODUCTS TO THE CONTRACTING OFFICER PRIOR TO STAGING THE WORK.

SOUND SURFACE CRACKS (CONCRETE SPALLS OFF WITH MODERATE HAMMERING): REMOVE UNSOUND CONCRETE, ROUTE CRACK TO A MIN WIDTH OF 1/2" AND MIN. DEPTH OF 3/4", CLEAN AND INJECT WITH EPOXY GEL*

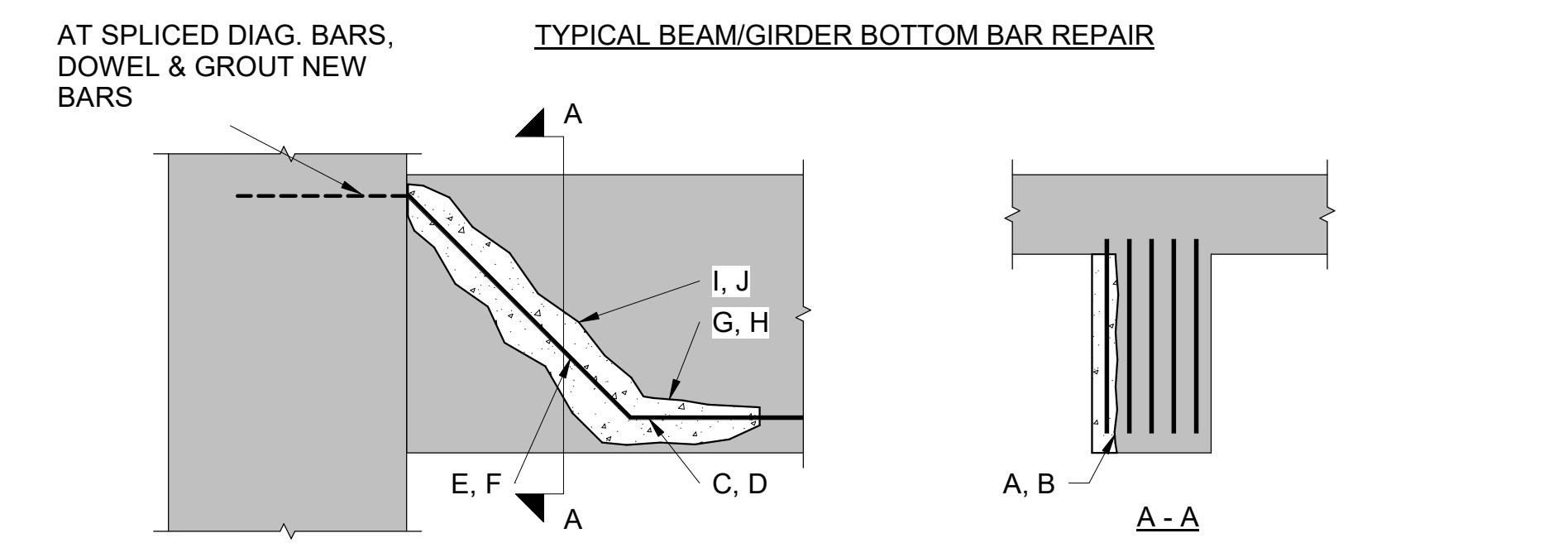
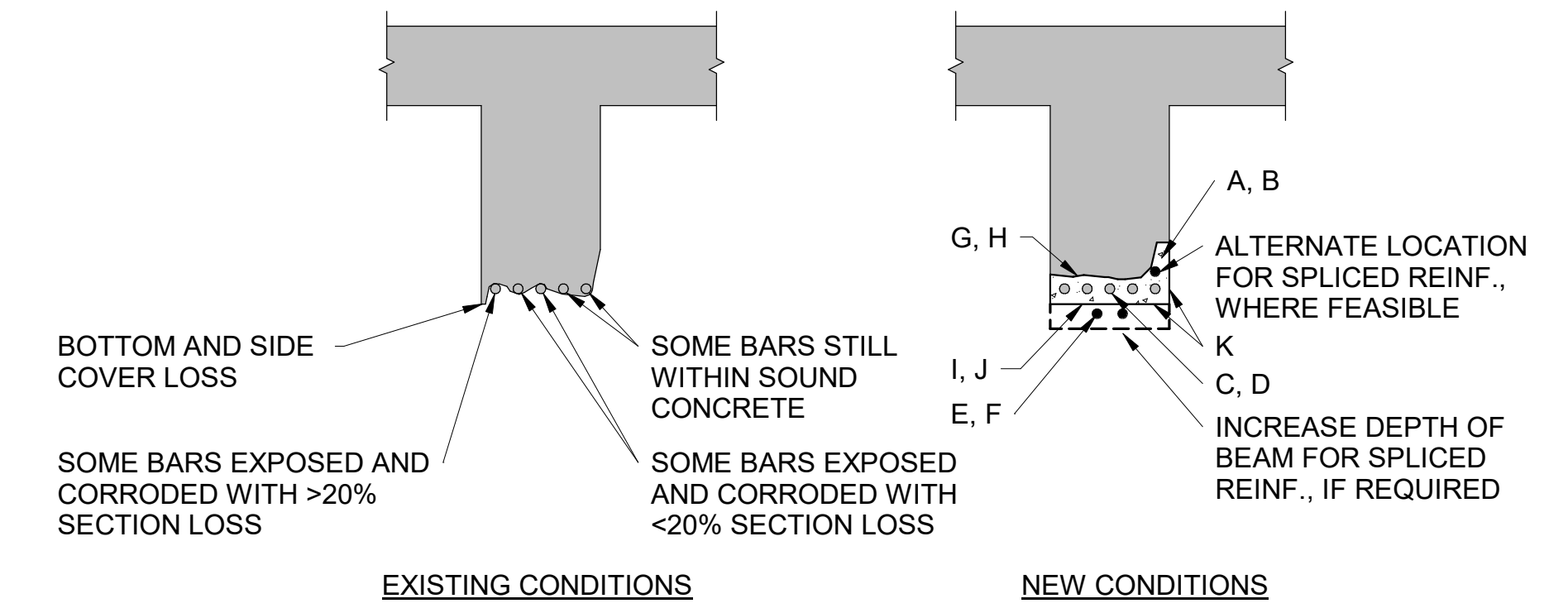


INJECT EPOXY INTO REMAINING AREA OF CRACK (IF ANY) BEYOND AREA OF REMOVALS PER DETAIL 1/S5.3

SOUND SURFACE CRACKS (TO A DEGREE WHERE CONCRETE SPALLS WOULD FALL OFF WITH MODERATE HAMMERING). ONCE COMPLETE, REMOVE UNSOUND CONCRETE, SQUARE OFF EDGES AND CREATE KEY AT PERIMETER FOR NEW PATCHING MATERIAL PER MANUF'S RECOMMENDATION (TYP.)

AFTER LOOSE CONCRETE IS REMOVED DOWN TO SOUND MATERIAL PREP SURFACE, COAT AND PATCH VOID FOLLOWING DETAILS 5, 6, & 7/S5.2 AS APPLICABLE

*EPOXY GEL SHALL BE SIKADUR 35 HI-MOD LV OR APPROVED EQUAL. CONTRACTOR SHALL SUBMIT SPECIFICATIONS OF ALL PRODUCTS TO THE CONTRACTING OFFICER PRIOR TO STAGING THE WORK.

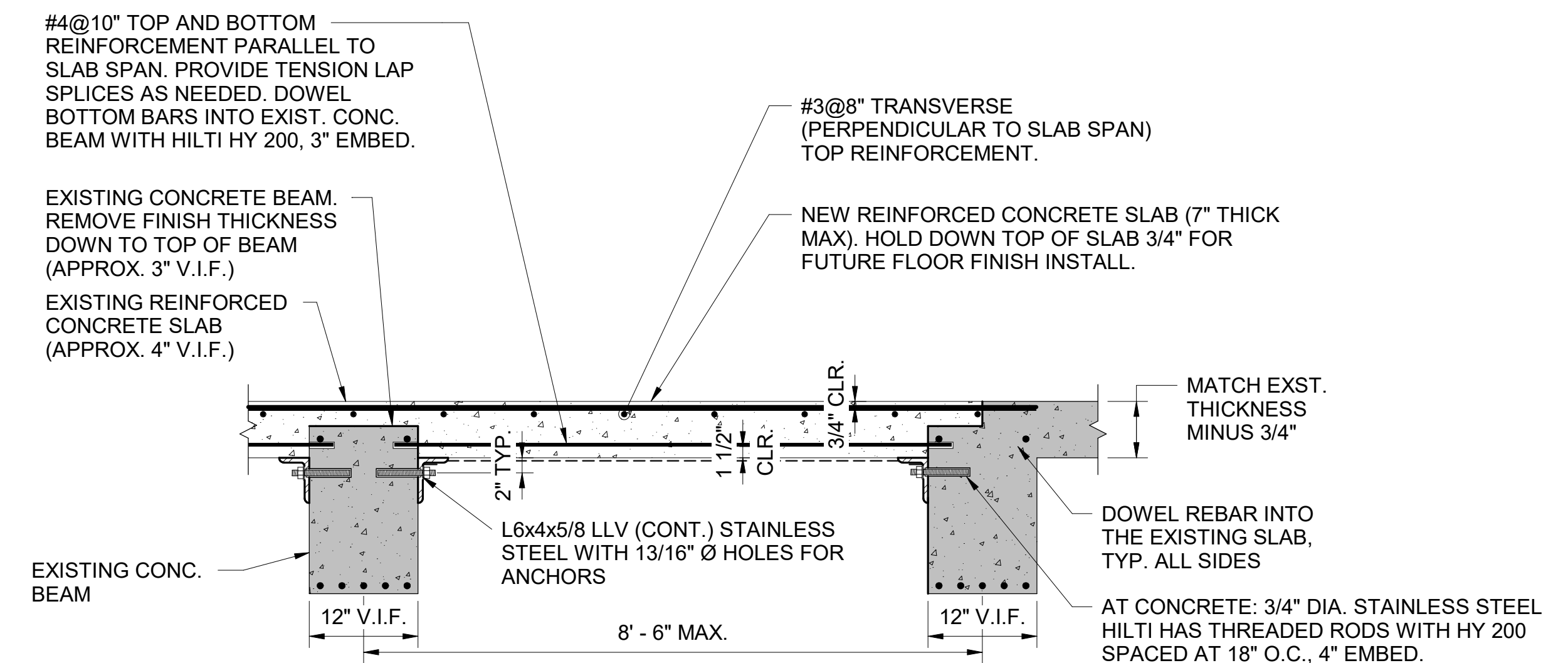


NOTES:
 1. ALPHABETICAL KEYNOTES IN REPAIR DETAIL CORRESPOND TO "NOTES - CONCRETE REPAIRS: NOTE #4 ENTITLED CONCRETE REPAIR SEQUENCE & CONSTRUCTION NOTES" ON S5.1.
 2. WHERE ADDED SPLICED REINFORCEMENT IS REQUIRED, ASSUME (2) NEW SPLICED BARS.
 3. REFER TO DETAILS 5 & 6 ON S5.2. FOR ADDITIONAL INFORMATION ON CONCRETE REPAIR SCOPE, PROVIDE STAINLESS STEEL HOOKED DOWELS SET IN REPAIR MATERIAL AT ALL C-6 APPLICATIONS

1 TYPICAL DETAIL CONCRETE CRACK REPAIR, SMALL (KEYNOTE C-5)
 S5.3 NO SCALE

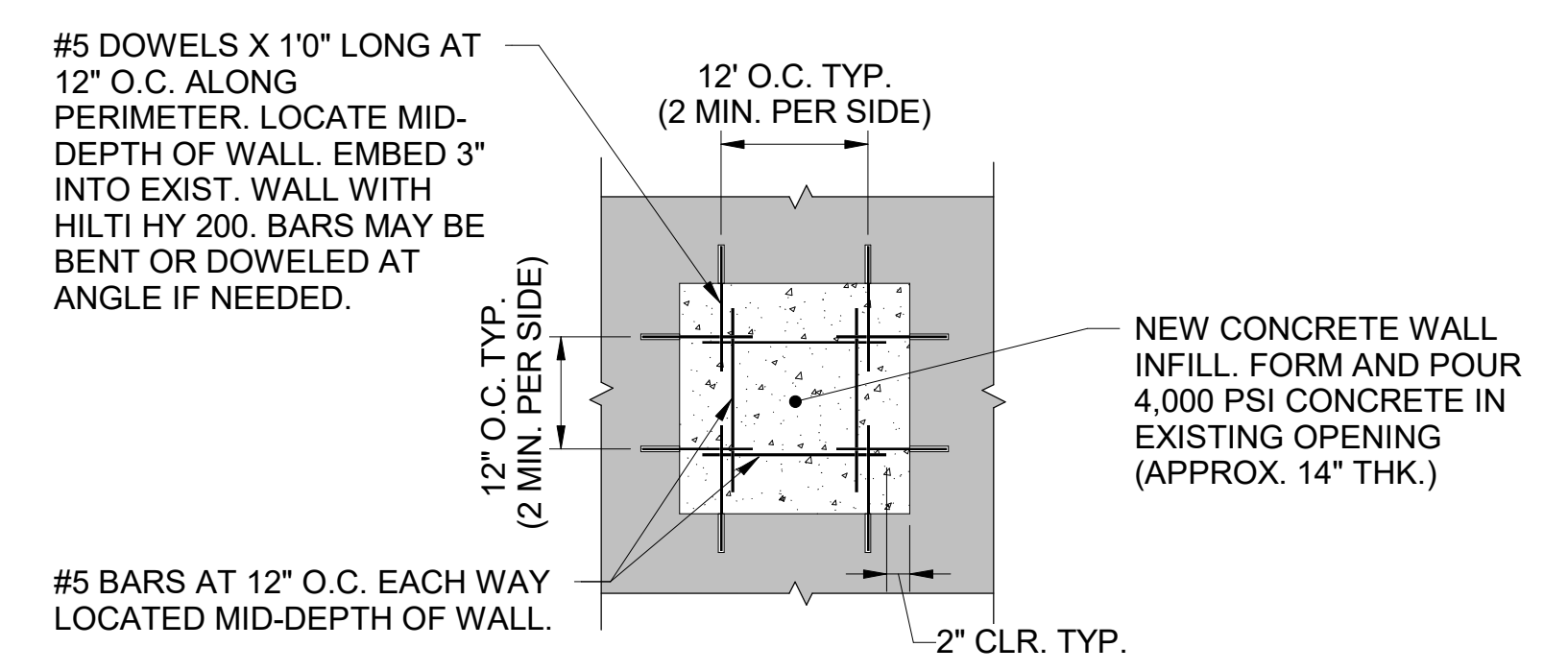
2 TYPICAL DETAIL CONCRETE CRACK REPAIR, LARGE (KEYNOTE C-5)
 S5.3 NO SCALE

3 TYPICAL DETAIL - CONCRETE BEAM/GIRDER REPAIR (KEYNOTE C-6)
 S5.3 NO SCALE



NOTES:
 1. CONTRACTOR TO PERFORM NON-DESTRUCTIVE EVALUATION TO LOCATE WALL/BEAM REBAR PRIOR TO STEEL INSTALLATION. DO NOT DAMAGE EXISTING REINFORCING STEEL.

4 TYPICAL DETAIL - FULL BAY REPLACEMENT WITH FORMED CONCRETE (KEYNOTE C-7)
 S5.3 NO SCALE



5 TYPICAL DETAIL - FORMED CONCRETE WALL INFILL (KEYNOTE C-8)
 S5.3 3/4" = 1'-0"



A/E FIRMS PRIME/ARCH: STRATA ARCHITECTURE 1703 OAK STREET, SUITE 100 KANSAS CITY, MO T: 816.474.0900 ENG: SILMAN 211 N 4TH AVE. ANN ARBOR, MI T: 734.800.2440	DESIGNED: KH CADD: CM TECH. REVIEW: NH DATE: 10.27.2023	SUB SHEET NO. 01 S5.3	TITLE OF SHEET MAURICE BATHHOUSE TYPICAL CONCRETE REPAIR DETAILS REHABILITATE BATHHOUSES HOT SPRINGS NATIONAL PARK	DRAWING NO. 128 182951 PMIS/PKG NO. 318915 110 OF 286
--	--	---	---	--