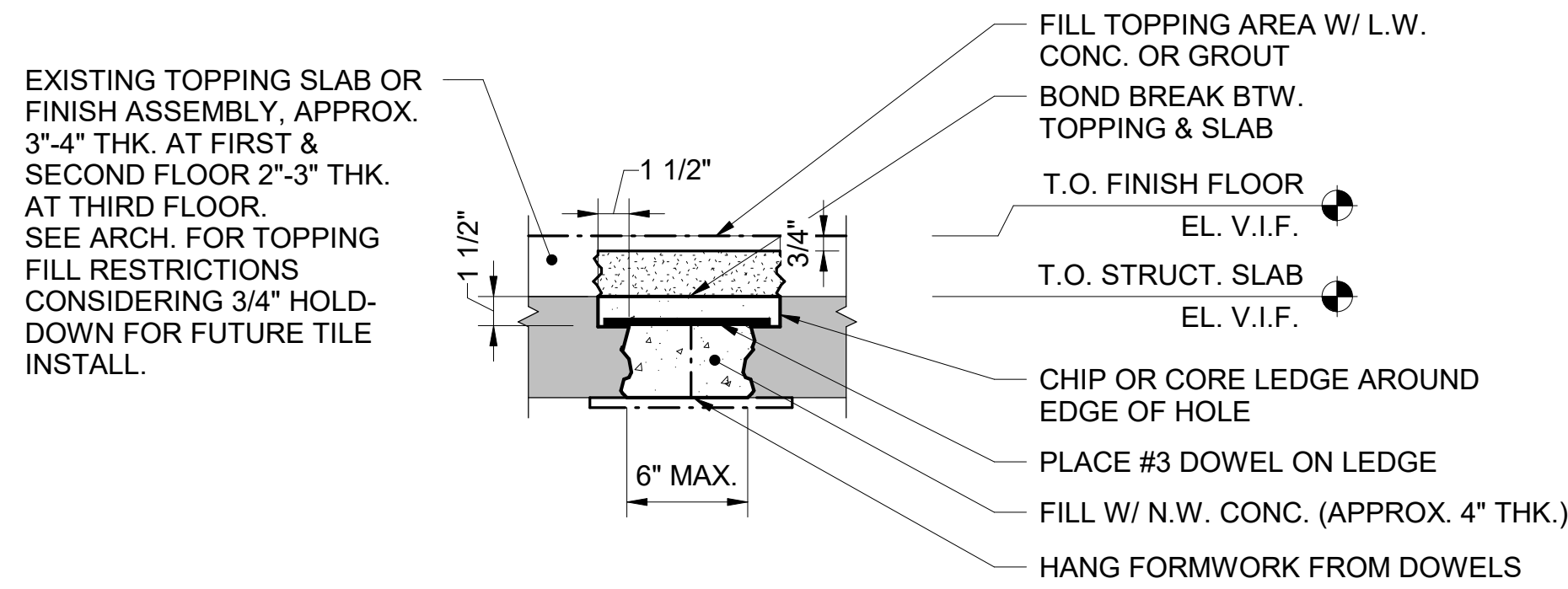


NOTE: DO NOT UNDERMINE EXIST. SLAB.

1 TYPICAL ATTACHMENTS OF NEW SLAB ON GRADE TO EXISTING (KEYNOTE C-1)

1 S5.2

NO SCALE



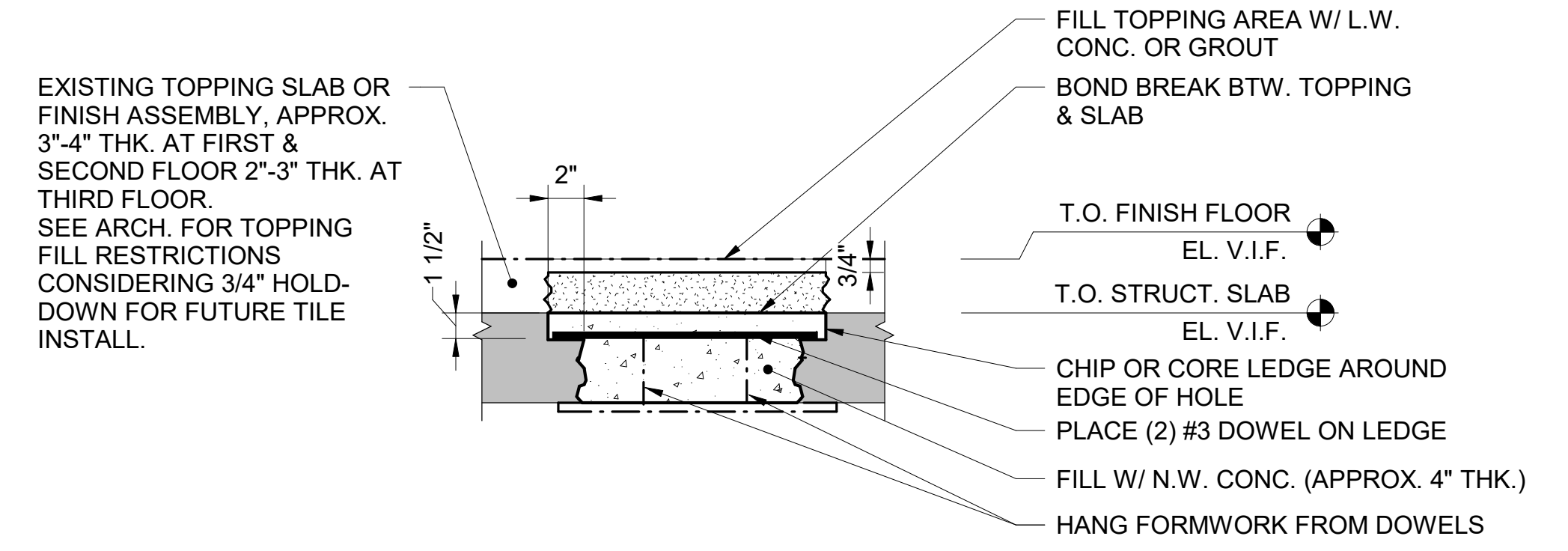
NOTES:

- AS AN ALTERNATIVE TO LEDGE & DOWELS, CONTRACTOR MAY ROUGHEN VERT. SURFACES, AND USE PATCHING MORTAR FOR INFILL.
- CONTRACTOR TO REMOVE ANY CONDUIT, LIGHT BOXES, OR OTHER EMBED. MATERIALS PRIOR TO REPAIR.

2 TYPICAL SLAB PATCH AT EXIST. OPENING LESS THAN 6" (KEYNOTE C-2)

2 S5.2

NO SCALE



NOTE: CONTRACTOR TO REMOVE ANY CONDUIT, LIGHT BOXES, OR OTHER EMBED. MATERIALS PRIOR TO REPAIR.

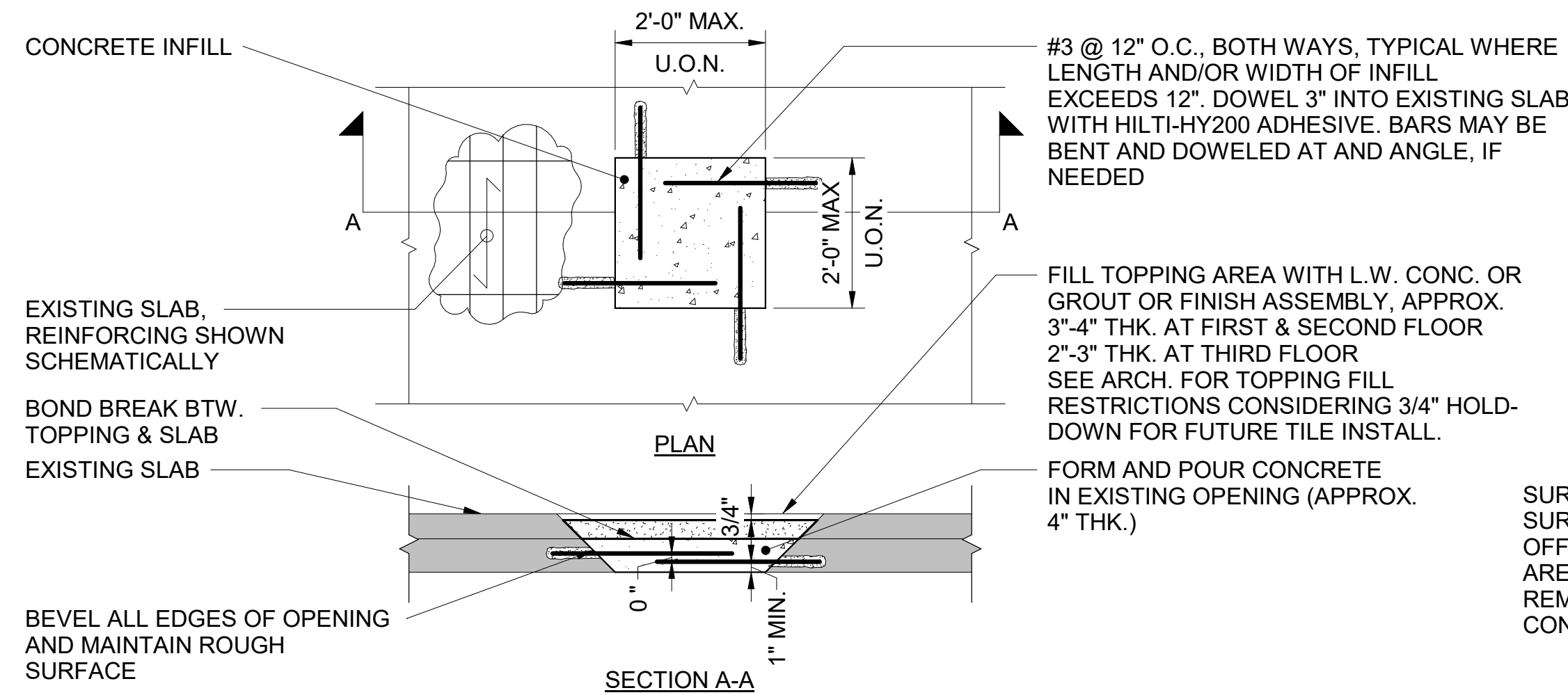
3 TYPICAL SLAB PATCH AT EXISTING OPENING 6" TO 12" (KEYNOTE C-3)

3 S5.2

NO SCALE

REPAIR PROCEDURE:

- REMOVE LOOSE CONCRETE AND FOREIGN MATERIALS, ROUGHEN EXISTING CONCRETE SURFACES THAT ARE TO RECEIVE PATCH CONCRETE.
- REMOVE RUST, SCALE, OIL AND ANY OTHER FOREIGN MATERIALS FROM STEEL REINFORCING BARS.
- COAT EXISTING CONCRETE AND STEEL WITH ANTI-CORROSION AGENTS AS SPECIFIED BY MANUFACTURER.
- PREPARE AND APPLY PATCH CONCRETE PER MANUFACTURER'S SPECIFICATION. FOLLOW INSTRUCTIONS FOR LIFT LAYERS, ENVIRONMENT CONDITIONS, TOOLS, AND ALL OTHER PROCEDURES.



NOTES:

- CONTRACTOR TO REMOVE ANY CONDUIT, LIGHT BOXES, OR OTHER EMBED. MATERIALS PRIOR TO REPAIR.
- WHEN BEVELING EDGES OF EXISTING OPENINGS, CONTRACTOR SHALL TAKE CARE TO AVOID EXCESSIVE SLAB REMOVAL OR DAMAGE TO SURROUNDING EXISTING SLAB.
- CONTRACTOR SHALL USE HAND TOOLS FOR SLAB PREPARATION.
- WHEN EXISTING REINFORCEMENT IS PRESENT, PROVIDE MINIMUM 1" COVER ALL AROUND BAR TO ALLOW NEW CONCRETE TO ENGAGE EXISTING BAR. REMOVE ANY CORROSION FROM EXISTING REINFORCING.

4 TYPICAL SLAB PATCH AT EXISTING OPENING 12" TO 24" (KEYNOTE C-3)

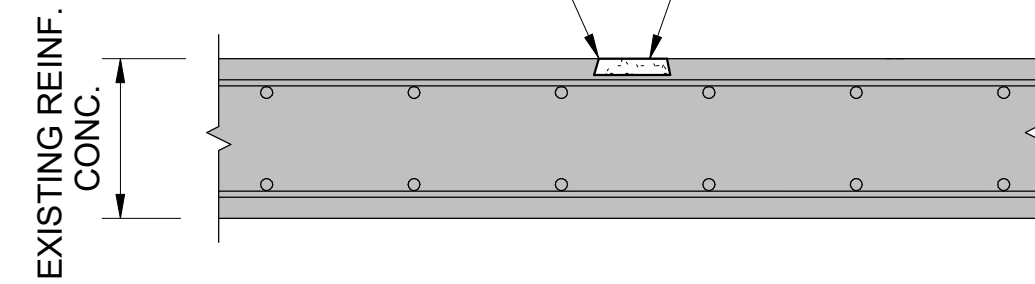
4 S5.2

NO SCALE

REPAIR PROCEDURE:

- REMOVE LOOSE CONCRETE AND FOREIGN MATERIALS, ROUGHEN EXISTING CONCRETE SURFACES THAT ARE TO RECEIVE PATCH CONCRETE.
- PREPARE AND APPLY PATCH CONCRETE PER MANUFACTURER'S SPECIFICATION. FOLLOW INSTRUCTIONS FOR LIFT LAYERS, ENVIRONMENT CONDITIONS, TOOLS, AND ALL OTHER PROCEDURES.

SURFACE SPALL: REMOVE UNSOUND SURROUNDING CONCRETE, SQUARE OFF EDGES AND BASE OF SPALLED AREAS AND UNDERCUT AREA OF REMOVAL, CLEAN AND APPLY PATCH CONCRETE*

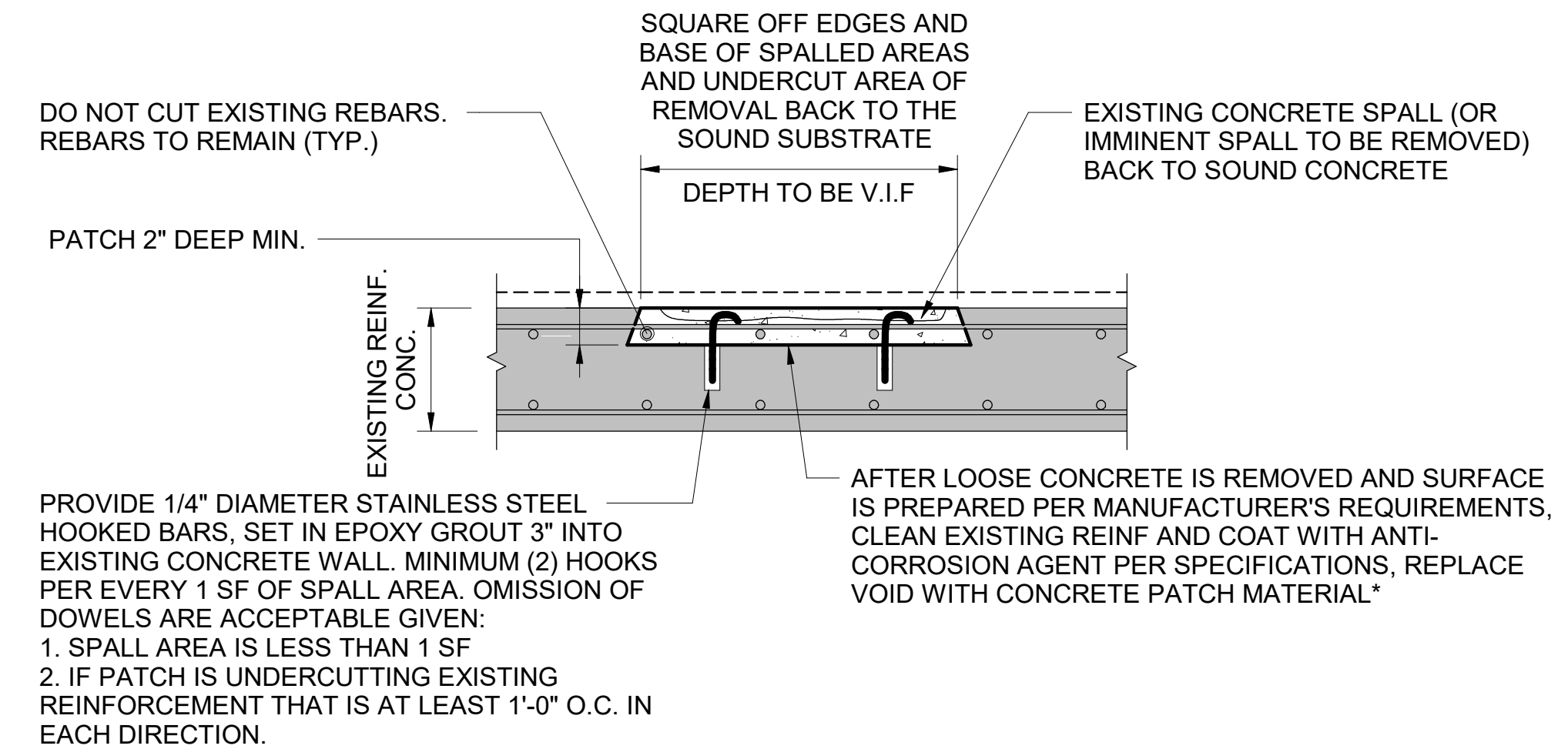


*SEE SPECIFICATION SECTION 03 01 30 FOR REQUIRED CONCRETE PATCH/REPAIR MORTAR MATERIAL. CONTRACTOR SHALL SUBMIT SPECIFICATIONS OF ALL PRODUCTS TO THE CONTRACTING OFFICER PRIOR TO STAGING THE WORK.

5 TYPICAL DETAIL CONCRETE SPALL PATCH REBAR NOT EXPOSED (KEYNOTE C-4 & C-6)

5 S5.2

NO SCALE

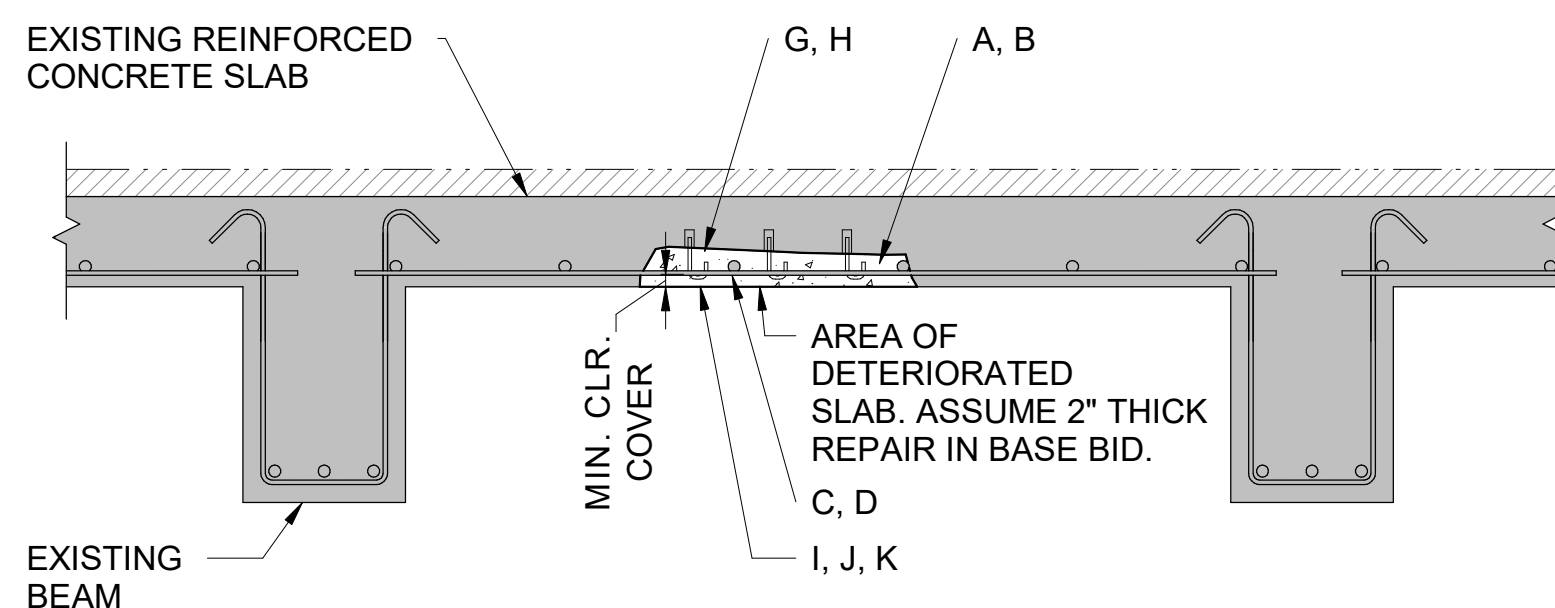


*SEE SPECIFICATION SECTION 03 01 30 FOR REQUIRED CONCRETE PATCH/REPAIR MORTAR MATERIAL. CONTRACTOR SHALL SUBMIT SPECIFICATIONS OF ALL PRODUCTS TO THE CONTRACTING OFFICER PRIOR TO STAGING THE WORK.

6 TYPICAL DETAIL CONCRETE SPALL PATCH REBAR EXPOSED BUT INTACT (KEYNOTE C-4 & C-6)

6 S5.2

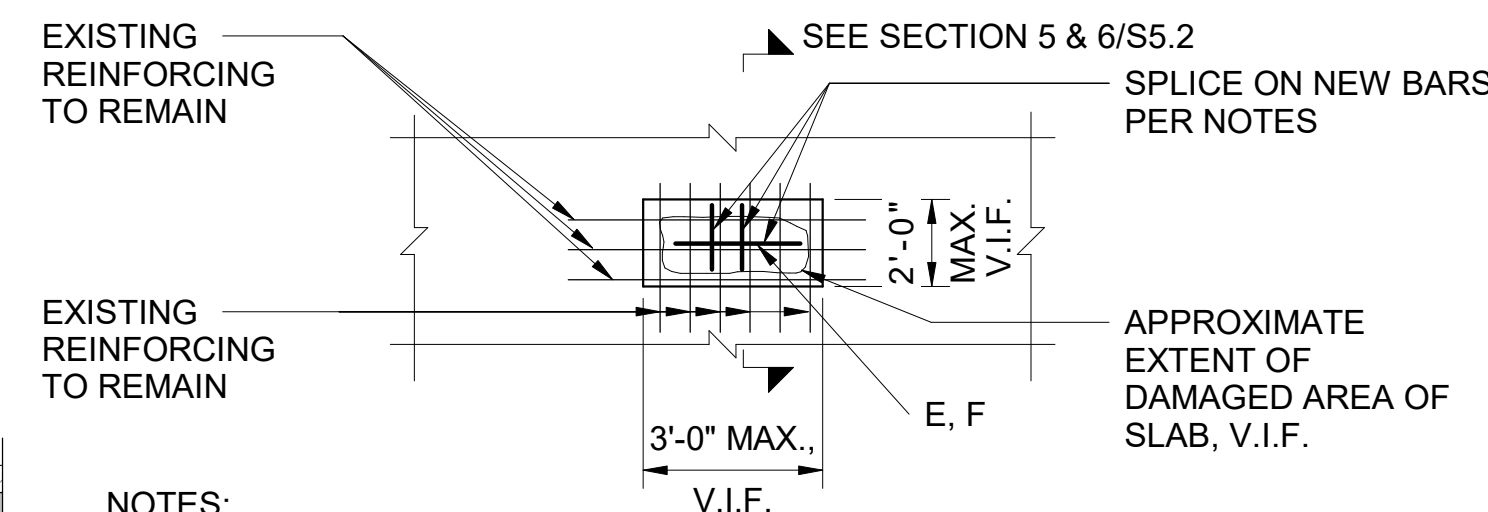
NO SCALE



7 TYPICAL DETAIL - BAR REINFORCED SLAB & WALL REPAIR (KEYNOTE C-4)

7 S5.2

NO SCALE



NOTES:

- ALPHABETICAL KEYNOTES IN REPAIR DETAIL CORRESPOND TO "NOTES - CONCRETE REPAIRS: NOTE #4 ENTITLED CONCRETE REPAIR SEQUENCE & CONSTRUCTION NOTES" ON S5.1.
- REFER TO DETAILS 5 & 6 ON S5.2 FOR ADDITIONAL REPAIR DIRECTIVES.
- REPAIR MAY BE USED ON TOP OR BOTTOM SURFACE OF SLAB AND WALLS. SEE NOTES FOR CONCRETE PATCHING MATERIALS FOR HORIZONTAL AND VERTICAL APPLICATIONS.

PLAN



A/E FIRMS PRIME/ARCH: STRATA ARCHITECTURE 1703 OAK STREET, SUITE 100 KANSAS CITY, MO T: 816.474.0900 ENG: SILMAN 211 N 4TH AVE. ANN ARBOR, MI T: 734.800.2460	DESIGNED: KH	SUB SHEET NO. 01 S5.2	TITLE OF SHEET MAURICE BATHHOUSE TYPICAL CONCRETE REPAIR DETAILS REHABILITATE BATHHOUSES HOT SPRINGS NATIONAL PARK	DRAWING NO. 128 182951
	CADD: CM			PMIS/PKG NO. 318915
TECH. REVIEW: NH	DATE: 10.27.2023			109 OF 286

10/26/2023 1:41:28 PM