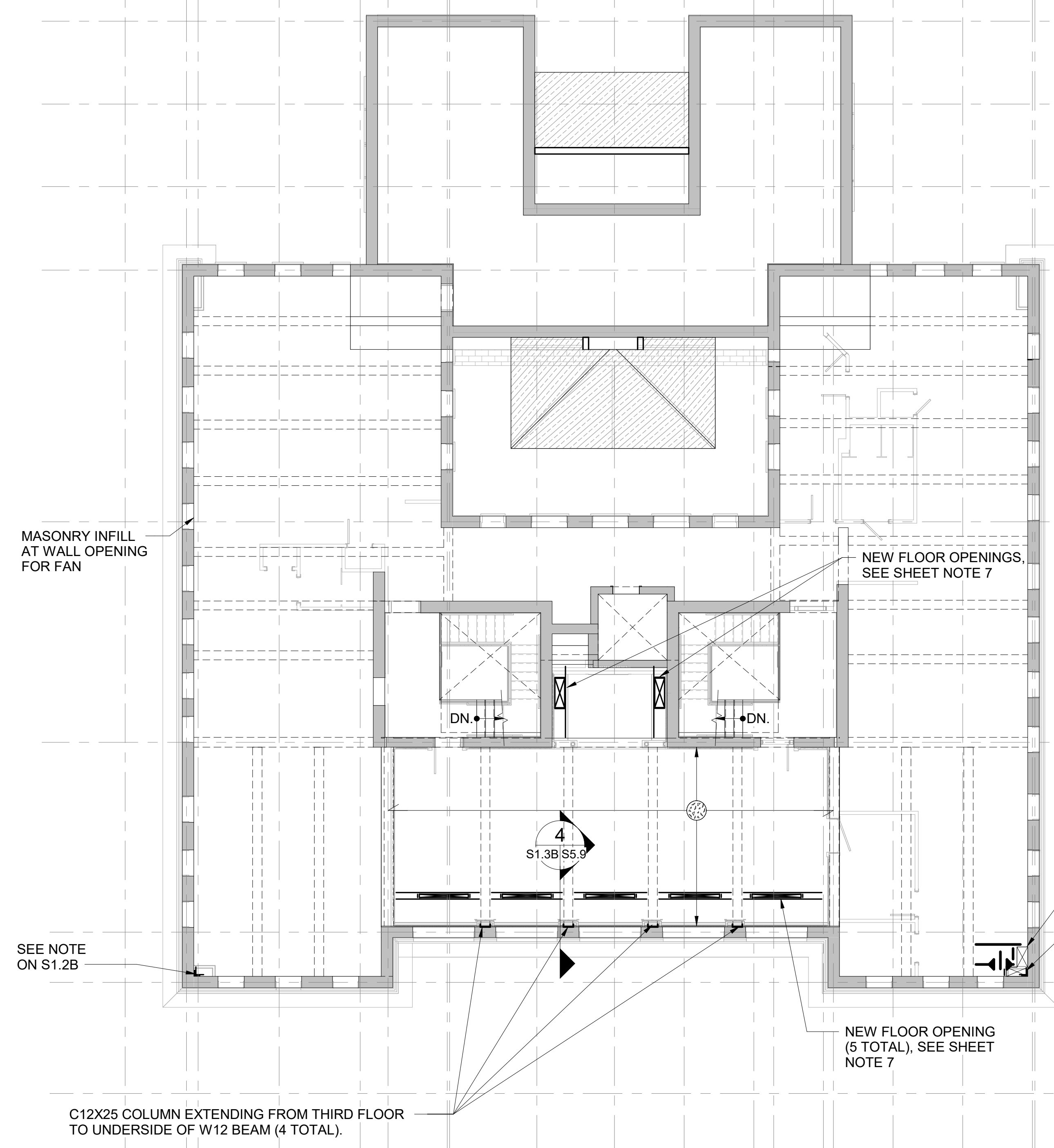


1 2 3 4 5 6 7 8 9 10 11 12 13 14 15 16 17 18 19 20

A
B
C
D
E
F
G
H
I



MASONRY INFILL AT WALL OPENING FOR FAN

NEW FLOOR OPENINGS, SEE SHEET NOTE 7

4
S1.3B/S5.9

SEE NOTE ON S1.2B

NEW FLOOR OPENING, SEE SHEET NOTE 7

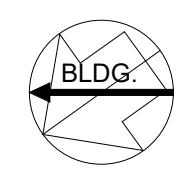
SEE NOTE ON S1.2B

NEW FLOOR OPENING (5 TOTAL), SEE SHEET NOTE 7

C12X25 COLUMN EXTENDING FROM THIRD FLOOR TO UNDERSIDE OF W12 BEAM (4 TOTAL).

SHEET NOTES

1. ALL CONDITIONS SHALL BE FIELD VERIFIED AS ASSUMED PER CONTRACT DOCUMENTS. NOTIFY CONTRACTING OFFICER IMMEDIATELY WITH ANY DISCREPANCIES. CONTRACTOR REVIEW TO OCCUR PRIOR TO REPAIR, NEW FRAMING FABRICATION, AND INSTALLATION; REFER TO REPAIR SHEETS.
2. VERIFY ALL DIMENSIONS IN FIELD, INCLUDING FRAMING SIZES SHOWN ON PLAN. COORDINATE ALL DIMENSIONS WITH ARCHITECT, CIVIL, MEP, AND OTHER PRIME CONTRACTORS.
3. COORDINATE ALL SLAB OPENINGS, SLOPES, SLEEVES, DEPRESSIONS, EDGE DIMENSIONS AND CURBS WITH ARCHITECT, CIVIL, MEP AND OTHER PRIME CONTRACTORS; REFER TO REPAIR SHEETS
4. SEE ARCHITECTURAL DRAWINGS FOR ALL OTHER INFORMATION NOT SHOWN.
5. CONTRACTOR TO PERFORM NON-DESTRUCTIVE EVALUATION TO LOCATE WALL/BEAM REBAR PRIOR TO NEW STEEL MEMBERS OR ASSOCIATED CONNECTION ANCHORAGE INSTALLATION.
6. REFER TO DETAILS ON S5.X SERIES SHEETS FOR APPLICABLE DETAILS.
7. NEW FLOOR AND WALL OPENINGS INDICATED ON PLAN ARE NOT ALL INCLUSIVE. COORDINATE ALL OPENINGS WITH ARCH, CIVIL, AND MEP DRAWINGS. REFER TO GENERAL NOTES AND TYPICAL DETAILS ON S5.7 RELATED TO CORING AND MASONRY LINTELS. REFER TO DETAILS ON S5.4 FOR FLOOR SUPPORT AT NEW OPENINGS; PROVIDE W8X15 MIN. BEAM SIZE.



1 THIRD FLOOR NEW CONSTRUCTION PLAN
S1.3B 1/8" = 1'-0" SCALE (A)

A/E FIRMS PRIME/ARCH: STRATA ARCHITECTURE 1703 OAK STREET, SUITE 100 KANSAS CITY, MO T: 816.474.0900	DESIGNED: KH	SUB SHEET NO. 01 S1.3B	TITLE OF SHEET THIRD FLOOR NEW CONSTRUCTION PLAN	DRAWING NO. 128 182951
	CADD: CM			PMIS/PKG NO. 318915
ENG: SILMAN 211 N 4TH AVE. ANN ARBOR, MI T: 734.800.2460	TECH. REVIEW: NH		REHABILITATE BATHHOUSES HOT SPRINGS NATIONAL PARK	104 OF 286
	DATE: 10.27.2023			