

SHEET NOTES

1. ALL CONDITIONS SHALL BE FIELD VERIFIED AS ASSUMED PER CONTRACT DOCUMENTS. NOTIFY CONTRACTING OFFICER IMMEDIATELY WITH ANY DISCREPANCIES. CONTRACTOR REVIEW TO OCCUR PRIOR TO REPAIR, NEW FRAMING FABRICATION, AND INSTALLATION; REFER TO REPAIR SHEETS.
2. VERIFY ALL DIMENSIONS IN FIELD, INCLUDING FRAMING SIZES SHOWN ON PLAN. COORDINATE ALL DIMENSIONS WITH ARCHITECT, CIVIL, MEP, AND OTHER PRIME CONTRACTORS.
3. COORDINATE ALL SLAB OPENINGS, SLOPES, SLEEVES, DEPRESSIONS, EDGE DIMENSIONS AND CURBS WITH ARCHITECT, CIVIL, MEP AND OTHER PRIME CONTRACTORS; REFER TO REPAIR SHEETS.
4. SEE ARCHITECTURAL DRAWINGS FOR ALL OTHER INFORMATION NOT SHOWN.
5. CONTRACTOR TO PERFORM NON-DESTRUCTIVE EVALUATION TO LOCATE WALL/BEAM REBAR PRIOR TO NEW STEEL MEMBERS OR ASSOCIATED CONNECTION ANCHORAGE INSTALLATION.
6. REFER TO DETAILS ON S5.X SERIES SHEETS FOR APPLICABLE DETAILS.
7. NEW FLOOR AND WALL OPENINGS INDICATED ON PLAN ARE NOT ALL INCLUSIVE. COORDINATE ALL OPENINGS WITH ARCH, CIVIL, AND MEP DRAWINGS. REFER TO GENERAL NOTES AND TYPICAL DETAILS ON S5.7 RELATED TO CORING AND MASONRY LINTELS. REFER TO DETAILS ON S5.4 FOR FLOOR SUPPORT AT NEW OPENINGS; PROVIDE W8X15 MIN. BEAM SIZE.

1 2 3 4 5 6 9 10 11 12 13 14 15 16 17 18 19 20

CHANNEL REINFORCEMENT AT CRACKED EXIST. CONC. BEAM. ATTACH WITH 3/4" DIA. X 4-1/2" EMBED. ADHESIVE ANCHORS AT 18" O.C. ALONG LENGTH, 6" VERTICALLY SPACED. PROVIDE WP-3 END CONNECTION PER 2/S5.4.

INSTALL 1/2" DIA. GALVANIZED TIE-RODS, 3 TOTAL RODS AT SKYLIGHT

GALV. GW-150 STAIR TREADS MANUFACTURED BY MCNICHOLS, OR APPROVED EQUAL (5 TOTAL TREADS).

STEEL LINTEL AT NEW OPENING IN EXISTING MASONRY WALL, APPROXIMATELY 3'-0" WIDE FOR INTERSTITIAL SPACE ACCESS.

NEW L4X3X1/4 LLV. ANCHOR TO EXISTING WALL AT DOOR THRESHOLD

NEW STAIR STRINGER, EACH SIDE. SEE WP-1 PER DETAIL 2 ON S5.4 TO ANCHOR TO EXISTING WALL. SEE TYPICAL DETAIL 1 ON S5.7 FOR TURN-DOWN STRINGER ANCHORAGE TO SLAB

DASHED LINES REPRESENT AHU-2M 4900 LBS

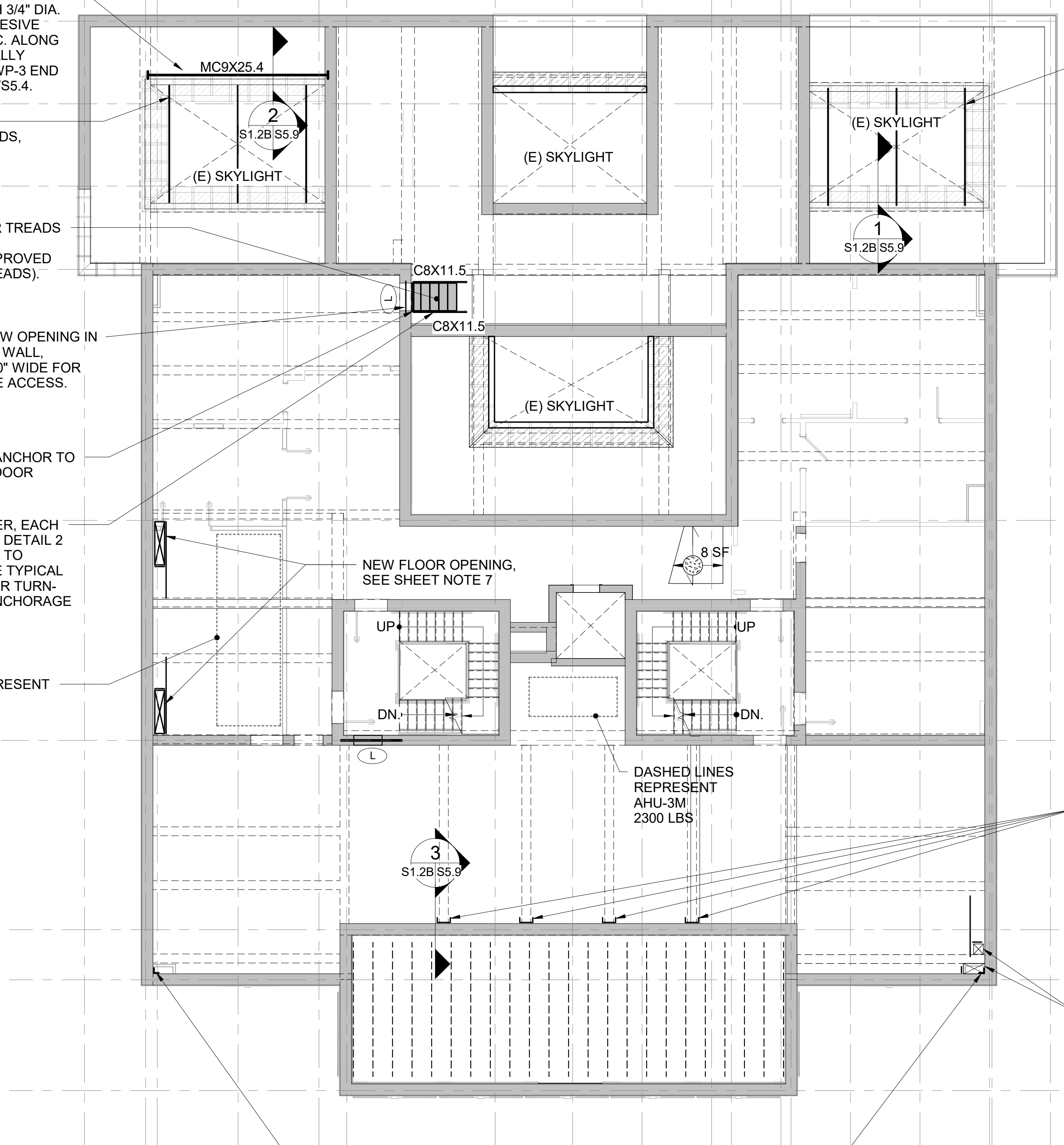
DASHED LINES REPRESENT AHU-3M 2300 LBS

L6X6X3/8 CONTINUOUS VERTICAL ANGLE FROM BASEMENT TO ROOF. ANCHOR BOTH LEGS TO EXIST. CONCRETE PER FLOOR. BETWEEN FLOORS ANCHOR ANGLE LEGS TO EXIST. WALLS AT 48" O.C. STAGGERED. PROVIDE 3/4" THREADED RODS IN ADHESIVE WITH SLEEVES, EMBED. 10"

INSTALL 1/2" DIA. GALVANIZED TIE-RODS, 3 TOTAL RODS AT SKYLIGHT

C12X25 COLUMN EXTENDING FROM SECOND FLOOR TO UNDRSIDE OF THIRD FLOOR CONCRETE BEAMS (4 TOTAL).

NEW FLOOR OPENINGS. SEE SHEET NOTE 7. DO NOT DAMAGE EXIST. BEAM



1 SECOND FLOOR NEW CONSTRUCTION PLAN  
S1.2B 1/8" = 1'-0" SCALE (A)

A/E FIRMS PRIME/ARCH: STRATA ARCHITECTURE 1703 OAK STREET, SUITE 100 KANSAS CITY, MO T: 816.474.0900 ENG: SILMAN 211 N 4TH AVE. ANN ARBOR, MI T: 734.800.2440	DESIGNED: KH CADD: CM TECH. REVIEW: NH DATE: 10.27.2023	SUB SHEET NO. <b>01</b> <b>S1.2B</b>	TITLE OF SHEET MAURICE BATHHOUSE <b>SECOND FLOOR NEW CONSTRUCTION PLAN</b> REHABILITATE BATHHOUSES HOT SPRINGS NATIONAL PARK	DRAWING NO. <b>128</b> <b>182951</b> PMIS/PKG NO. 318915 101 OF 286
--	--	--	--	--