

SHEET NOTES

1. ALL CONDITIONS SHALL BE FIELD VERIFIED AS ASSUMED PER CONTRACT DOCUMENTS. NOTIFY CONTRACTING OFFICER IMMEDIATELY WITH ANY DISCREPANCIES. CONTRACTOR REVIEW TO OCCUR PRIOR TO REPAIR, NEW FRAMING FABRICATION, AND INSTALLATION; REFER TO REPAIR SHEETS.
2. VERIFY ALL DIMENSIONS IN FIELD, INCLUDING FRAMING SIZES SHOWN ON PLAN. COORDINATE ALL DIMENSIONS WITH ARCHITECT, CIVIL, MEP, AND OTHER PRIME CONTRACTORS.
3. COORDINATE ALL SLAB OPENINGS, SLOPES, SLEEVES, DEPRESSIONS, EDGE DIMENSIONS AND CURBS WITH ARCHITECT, CIVIL, MEP AND OTHER PRIME CONTRACTORS; REFER TO REPAIR SHEETS
4. SEE ARCHITECTURAL DRAWINGS FOR ALL OTHER INFORMATION NOT SHOWN.
5. CONTRACTOR TO PERFORM NON-DESTRUCTIVE EVALUATION TO LOCATE WALL/BEAM REBAR PRIOR TO NEW STEEL MEMBERS OR ASSOCIATED CONNECTION ANCHORAGE INSTALLATION.
6. REFER TO DETAILS ON S5.X SERIES SHEETS FOR APPLICABLE DETAILS.
7. NEW FLOOR AND WALL OPENINGS INDICATED ON PLAN ARE NOT ALL INCLUSIVE. COORDINATE ALL OPENINGS WITH ARCH, CIVIL, AND MEP DRAWINGS. REFER TO GENERAL NOTES AND TYPICAL DETAILS ON S5.7 RELATED TO CORING AND MASONRY LINTELS. REFER TO DETAILS ON S5.4 FOR FLOOR SUPPORT AT NEW OPENINGS; PROVIDE W8X15 MIN. BEAM SIZE.

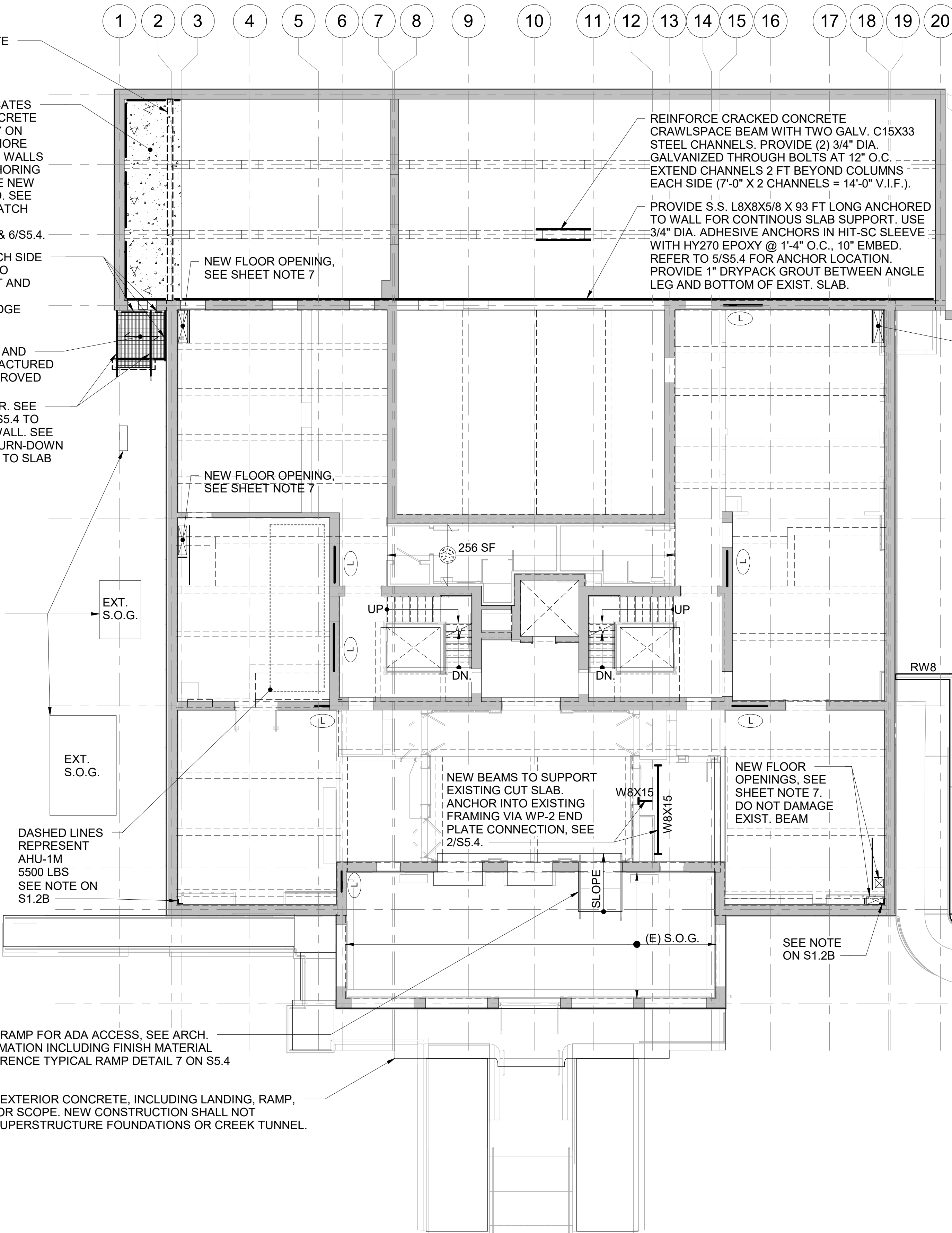
NEW 8" THICK CONCRETE WALL IN CRAWLSPACE BELOW

HATCHED REGION INDICATES NEW REINFORCED CONCRETE SLAB, SEE KEYNOTE C-7 ON S1.1A. TEMPORARILY SHORE EXISTING CRAWLSPACE WALLS DURING SLAB WORK. SHORING MAY BE REMOVED ONCE NEW SLAB HAS FULLY CURED. SEE MEP DWGS FOR NEW HATCH LOCATION(S). REFERENCE DETAILS 5 & 6/S5.4.

GALV. L4X3X1/4 LLV, EACH SIDE OF LANDING. ANCHOR TO EXISTING WALL AT EAST AND SOUTH EDGE; WELD TO STRINGERS AT WEST EDGE

GALV. GW-150 GRATING AND STAIR TREAD(S) MANUFACTURED BY MCNICHOLS, OR APPROVED EQUAL
GALV. C8X11.5 STRINGER. SEE WP-1 PER DETAIL 2 ON S5.4 TO ANCHOR TO EXISTING WALL. SEE DETAIL 1 ON S5.7 FOR TURN-DOWN STRINGER ANCHORAGE TO SLAB

EXTERIOR PAVING AND ON GRADE EQUIPMENT PADS FOR MECHANICAL UNITS AT THE NORTH SIDE OF BUILDING.



NEW FLOOR OPENING, SEE SHEET NOTE 7

REINFORCE CRACKED CONCRETE CRAWLSPACE BEAM WITH TWO GALV. C15X33 STEEL CHANNELS. PROVIDE (2) 3/4" DIA. GALVANIZED THROUGH BOLTS AT 12" O.C. EXTEND CHANNELS 2 FT BEYOND COLUMNS EACH SIDE (7'-0" X 2 CHANNELS = 14'-0" V.I.F.).
PROVIDE S.S. L8X8X5/8 X 93 FT LONG ANCHORED TO WALL FOR CONTINUOUS SLAB SUPPORT. USE 3/4" DIA. ADHESIVE ANCHORS IN HIT-SC SLEEVE WITH HY270 EPOXY @ 1'-4" O.C., 10" EMBED. REFER TO S5.4 FOR ANCHOR LOCATION. PROVIDE 1" DRYPACK GROUT BETWEEN ANGLE LEG AND BOTTOM OF EXIST. SLAB.

EXISTING EXTERIOR SLAB ON GRADE TO BE REPLACED, SEE CIVIL

NEW FLOOR OPENING, SEE SHEET NOTE 7

EXISTING LANDSCAPE SITE WALL. NEW CONSTRUCTION SHALL NOT UNDERMINE WALL OR FOOTING. OTHERWISE, CONTRACTOR SHALL BE RESPONSIBLE FOR EXCAVATION OR TEMPORARY EARTH RETAINING SYSTEM TO AVOID UNDERMINING

EXT. S.O.G.

EXT. S.O.G.

DASHED LINES REPRESENT AHU-1M 5500 LBS SEE NOTE ON S1.2B

NEW BEAMS TO SUPPORT EXISTING CUT SLAB. ANCHOR INTO EXISTING FRAMING VIA WP-2 END PLATE CONNECTION, SEE 2/S5.4.

NEW FLOOR OPENINGS, SEE SHEET NOTE 7. DO NOT DAMAGE EXIST. BEAM

NEW REINFORCED CONCRETE RETAINING WALL. SEE DETAIL 2/S5.8. SEE CIVIL FOR SLAB ON GRADE AT RAMP BETWEEN RETAINING WALLS

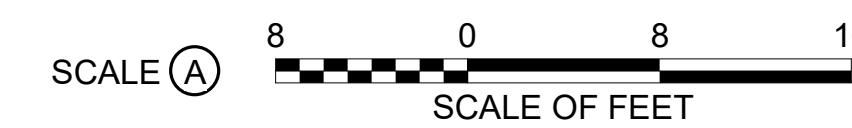
SLOPE

(E) S.O.G.

SEE NOTE ON S1.2B

REMOVE AND REPLACE RAMP FOR ADA ACCESS, SEE ARCH. FOR ADDITIONAL INFORMATION INCLUDING FINISH MATERIAL AND ELEVATIONS. REFERENCE TYPICAL RAMP DETAIL 7 ON S5.4

REMOVE AND REPLACE EXTERIOR CONCRETE, INCLUDING LANDING, RAMP, AND STAIR. SEE CIVIL FOR SCOPE. NEW CONSTRUCTION SHALL NOT UNDERMINE EXISTING SUPERSTRUCTURE FOUNDATIONS OR CREEK TUNNEL.



A/E FIRMS PRIME/ARCH: STRATA ARCHITECTURE 1703 OAK STREET, SUITE 100 KANSAS CITY, MO T: 816.474.0900 ENG: SILMAN 211 N 4TH AVE. ANN ARBOR, MI T: 734.800.2440	DESIGNED: KH CADD: CM TECH. REVIEW: NH DATE: 10.27.2023	SUB SHEET NO. 01 S1.1B	TITLE OF SHEET MAURICE BATHHOUSE FIRST FLOOR NEW CONSTRUCTION PLAN REHABILITATE BATHHOUSES HOT SPRINGS NATIONAL PARK	DRAWING NO. 128 182951 PMIS/PKG NO. 318915 98 OF 286
--	--	--	---	---