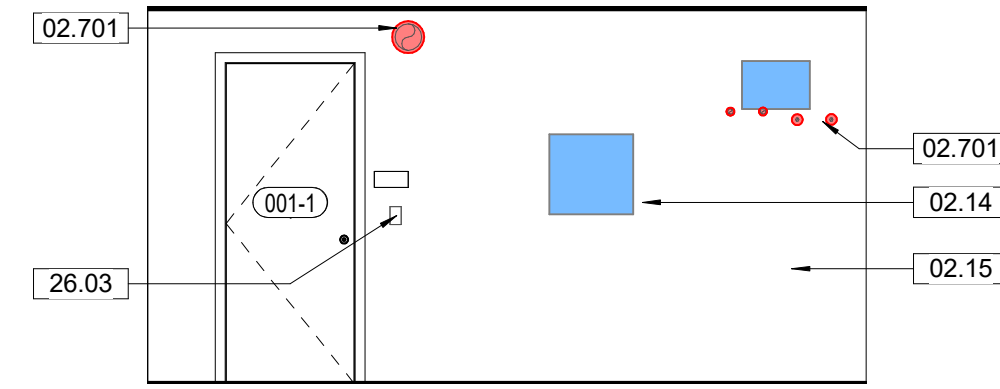
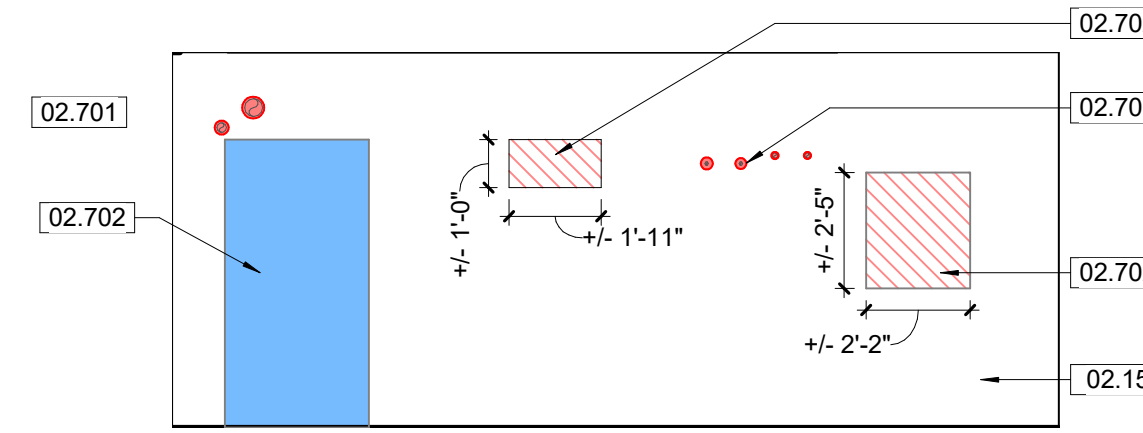


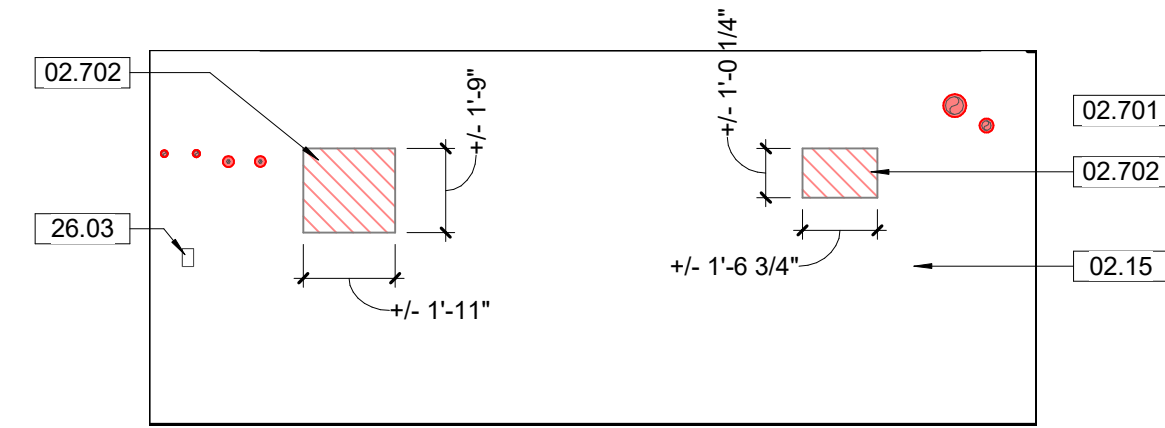
1 (P) B01 Basement Rm. E.
A6.7 1/4" = 1'-0" SCALE (A)



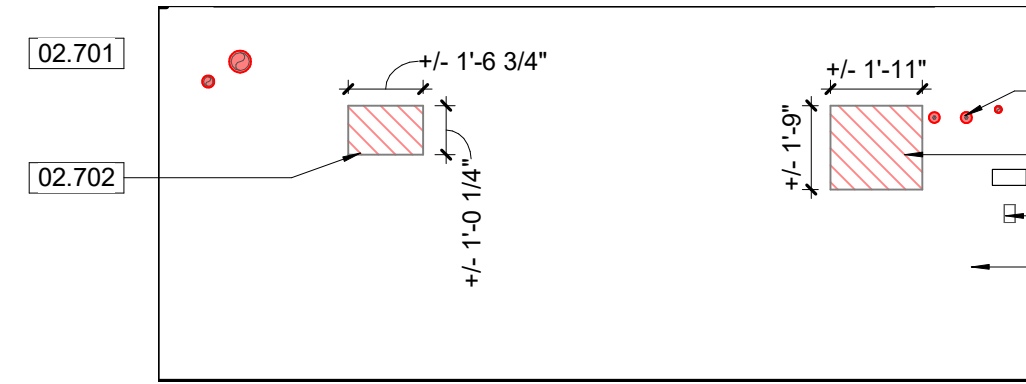
2 (P) B01 Basement Rm. W.
A6.7 1/4" = 1'-0" SCALE (A)



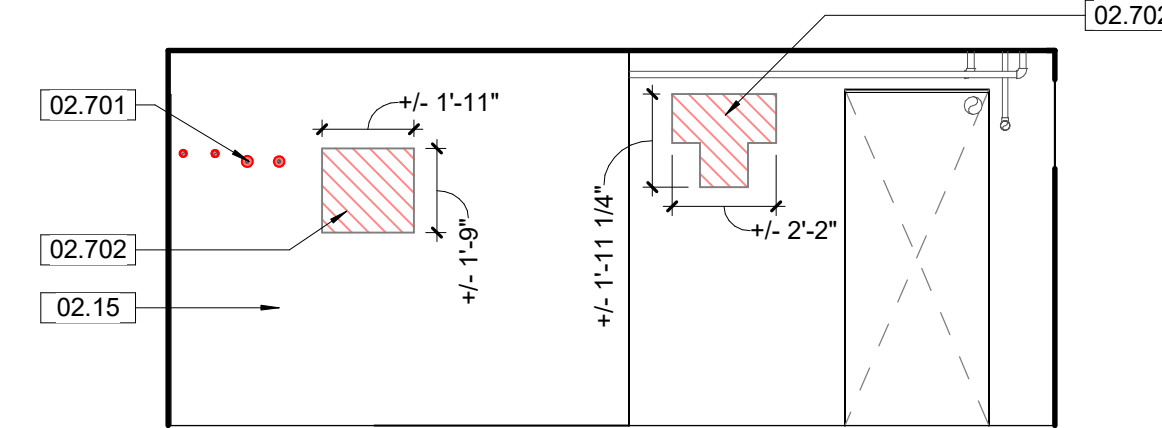
3 (P) B03 Storage E.
A6.7 1/4" = 1'-0" SCALE (A)



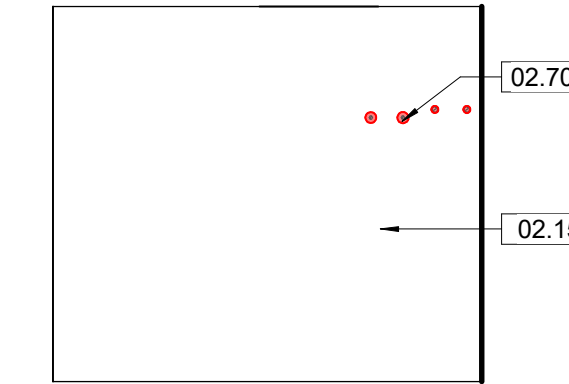
4 (P) B03 Storage W.
A6.7 1/4" = 1'-0" SCALE (A)



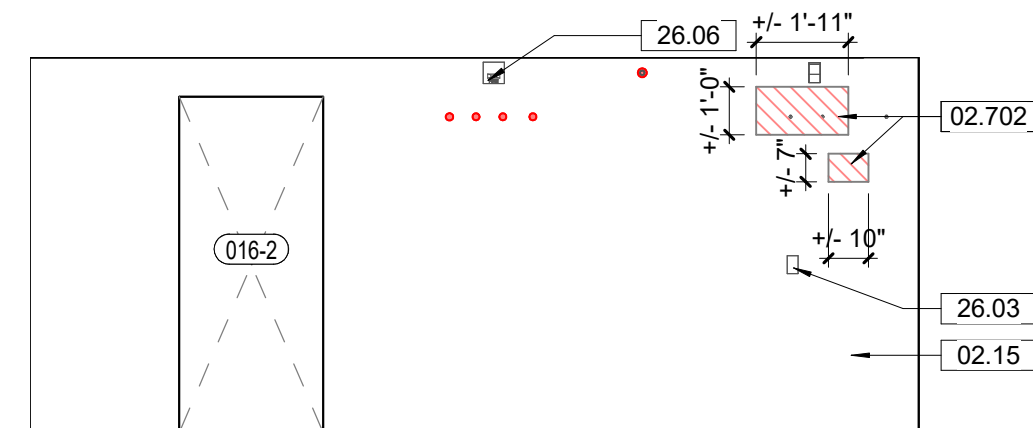
5 (P) B04 Toilet E.
A6.7 1/4" = 1'-0" SCALE (A)



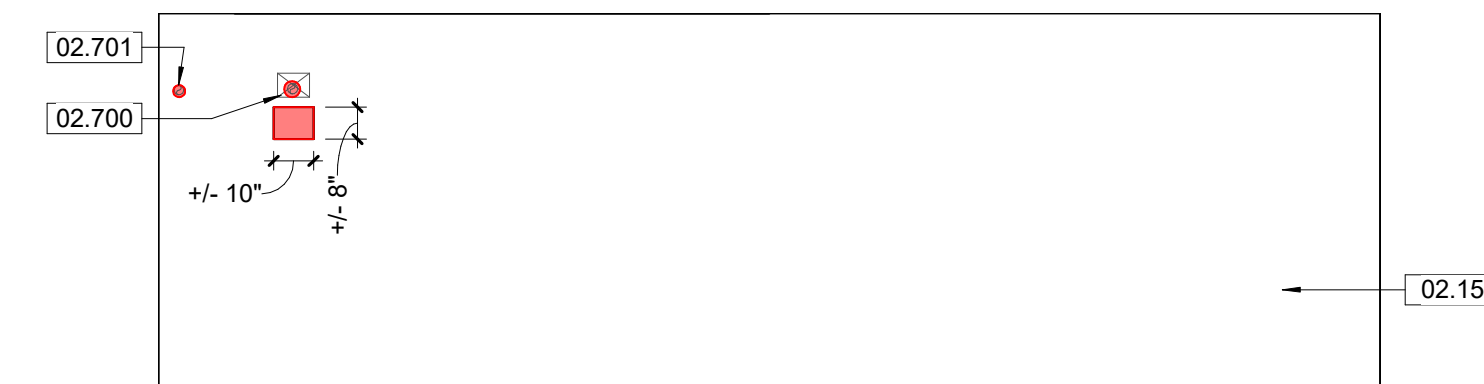
6 (P) B04 Toilet W.
A6.7 1/4" = 1'-0" SCALE (A)



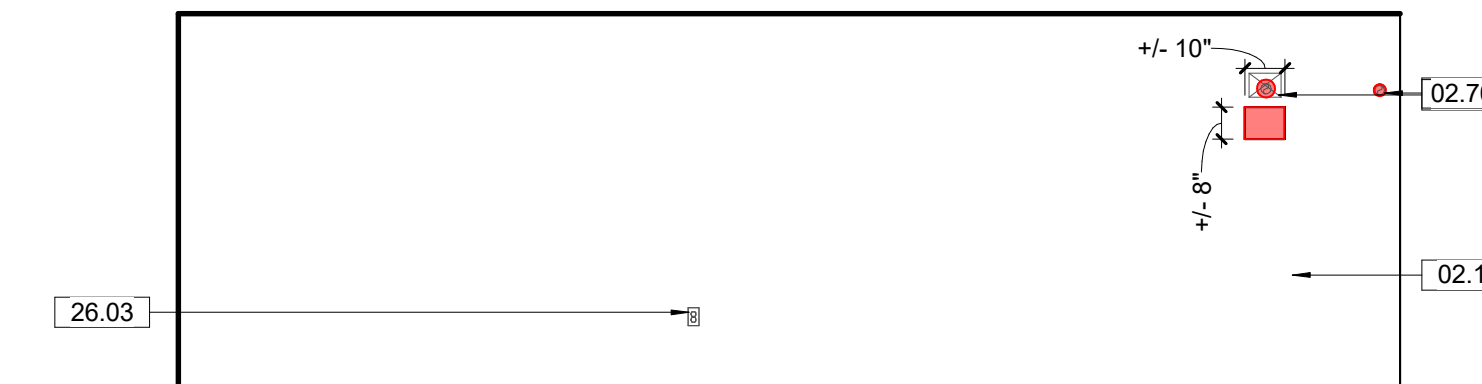
7 (P) B05 Female Attendants E.
A6.7 1/4" = 1'-0" SCALE (A)



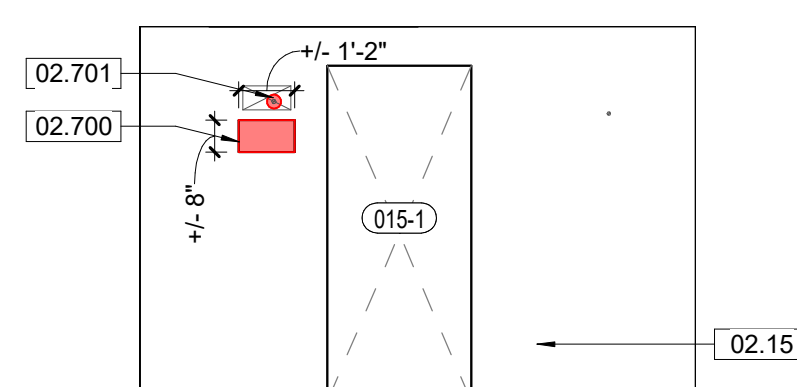
8 (P) B11 Hall E.
A6.7 1/4" = 1'-0" SCALE (A)



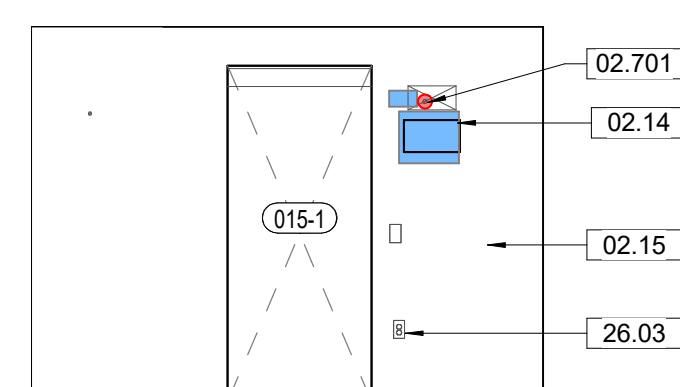
9 (P) B13 Workroom W.
A6.7 1/4" = 1'-0" SCALE (A)



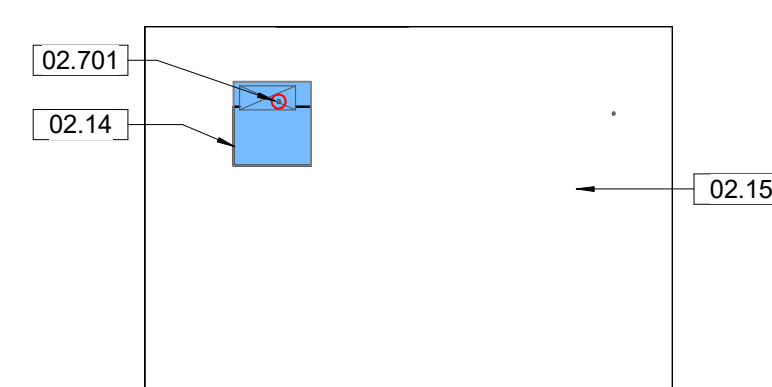
10 (P) B14 Laundry E.
A6.7 1/4" = 1'-0" SCALE (A)



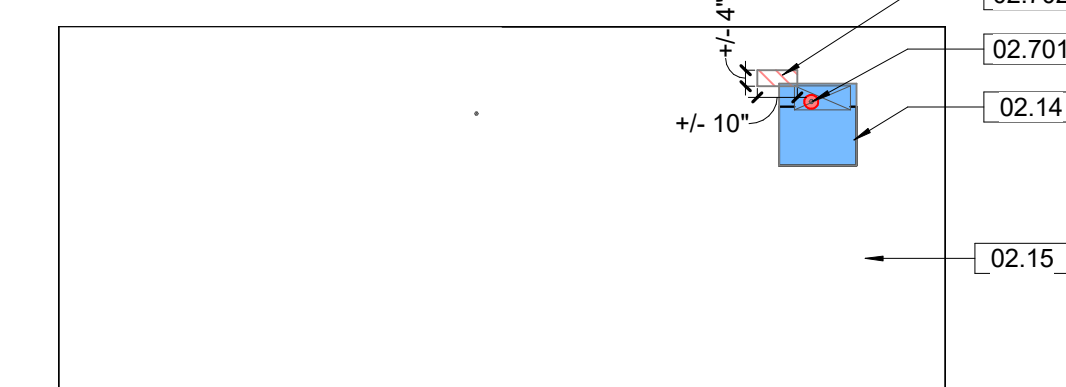
11 (P) B14 Laundry W.
A6.7 1/4" = 1'-0" SCALE (A)



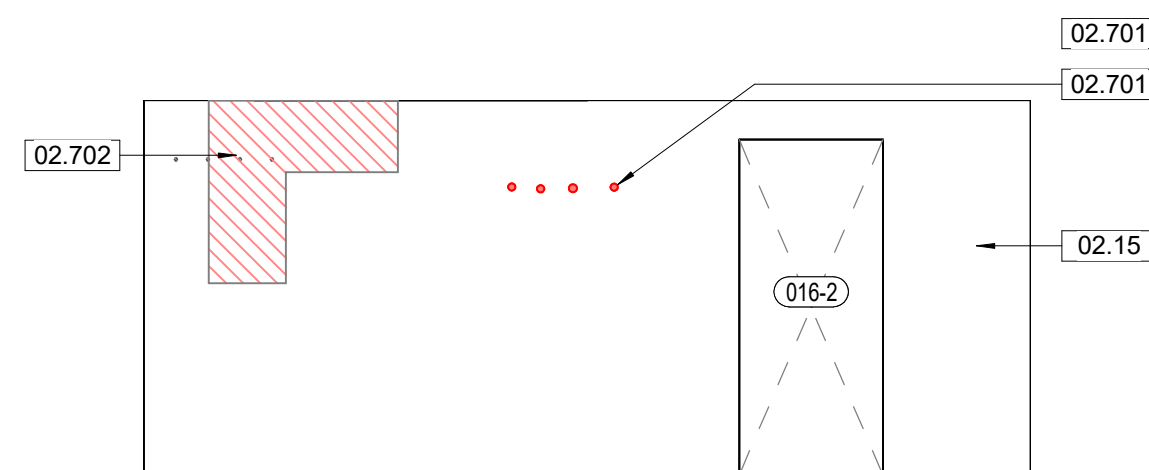
12 (P) B15 Toilet E.
A6.7 1/4" = 1'-0" SCALE (A)



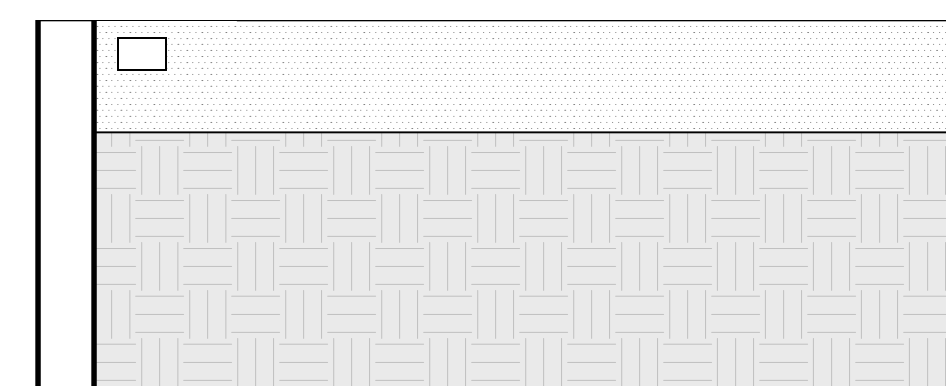
13 (P) B15 Toilet W.
A6.7 1/4" = 1'-0" SCALE (A)



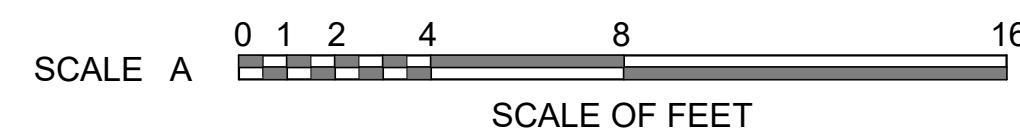
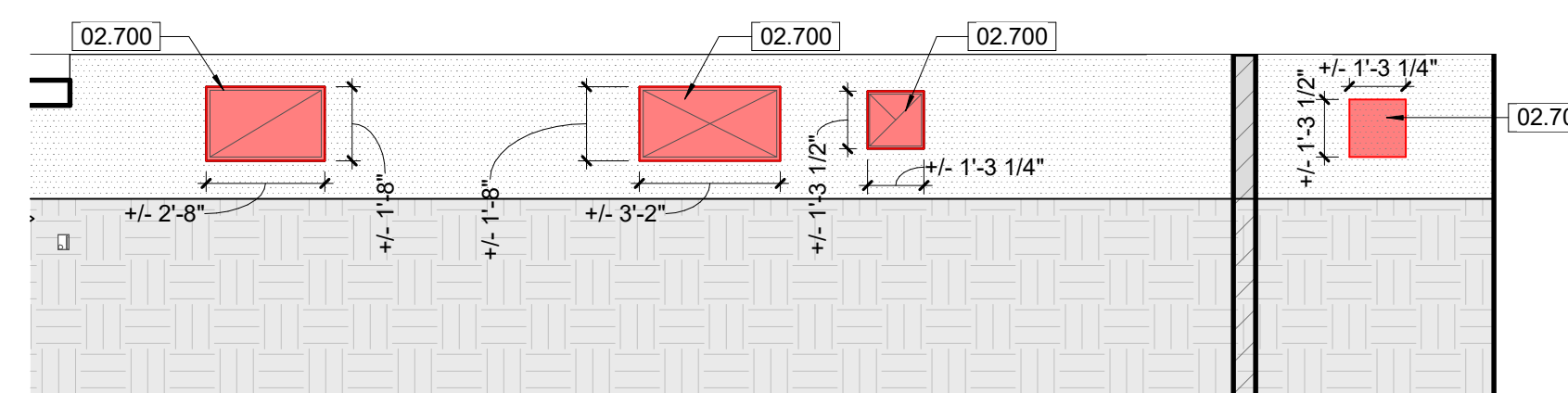
14 (P) B16 Male Attendants E.
A6.7 1/4" = 1'-0" SCALE (A)



15 (P) B16 Male Attendants W.
A6.7 1/4" = 1'-0" SCALE (A)



16 (P) B19 Crawl Space W.
A6.7 1/4" = 1'-0" SCALE (A)



GENERAL NOTES - TREATMENT:

A. DO NOT SCALE FROM THE DRAWINGS. ALL DIMENSIONS ARE APPROXIMATE. ACTUAL FIELD VERIFIED DIMENSIONS SHALL BE OBTAINED BY THE GENERAL CONTRACTOR OR THE APPLICABLE SUB-CONTRACTORS BEFORE SUBMITTING SHOP DRAWINGS, ORDERING MATERIALS, OR THE COMMENCEMENT OF CONSTRUCTION.

B. THE GENERAL CONTRACTOR IS RESPONSIBLE FOR VERIFYING EXISTING CONDITIONS. IDENTIFYING ADDITIONAL TREATMENT WORK THAT MAY BE REQUIRED FOR THE INSTALLATION OF NEW WORK. EXISTING CONDITIONS INCLUDE UTILITY LOCATIONS, EXISTING STRUCTURE LOCATIONS, AND EXISTING FIELD DIMENSIONS. THE ARCHITECT SHALL BE NOTIFIED OF ANY DISCREPANCIES DETRIMENTAL TO THE PROPER EXECUTION OF NEW WORK.

C. ASSUME ALL PAINTED SURFACES CONTAIN LEAD BASED PAINT. TAKE ALL PRECAUTIONS WHEN WORKING WITH PAINTED MATERIALS TO MEET FEDERAL AND STATE REGULATIONS, PER SPECIFICATIONS.

KEYNOTES

02.14	210503 - EXISTING HOLE IN THE WALL TO REMAIN. CREATE SMOKE SEAL AROUND ALL MEP ELEMENTS ENTERING STAIRWELLS.
02.15	EXISTING CONCRETE WALL.
02.700	017329, 024296, 028333 - CUT NEW HOLE IN EXISTING WALL. REFERENCE STRUCTURAL AND MEP DRAWINGS, TYPICAL. ALL DIMENSIONS PROVIDED AT NEW HOLE LOCATIONS ARE ESTIMATES. CONTRACTOR TO COORDINATE REQUIRED HOLE DIMENSIONS WITH SUBCONTRACTORS AND CONTRACTING OFFICER PRIOR TO INSTALLATION.
02.701	017329, 024296, 028333 - CORE NEW HOLE IN EXISTING WALL. REFERENCE STRUCTURAL AND MEP DRAWINGS, TYPICAL. CONTRACTOR TO COORDINATE REQUIRED HOLE DIMENSIONS WITH SUBCONTRACTOR AND CO PRIOR TO INSTALLATION.
02.702	054000, 092300 - INFILL EXISTING OPENING. REFERENCE STRUCTURAL DRAWINGS.
02.703	017329, 024296, 028333 - CUT NEW HOLE IN EXISTING EXTERIOR WALL. REFERENCE STRUCTURAL, MEP, AND CIVIL DRAWINGS. TYPICAL. ALL DIMENSIONS PROVIDED AT NEW HOLE LOCATIONS ARE ESTIMATES. CONTRACTOR TO COORDINATE REQUIRED HOLE DIMENSIONS WITH SUBCONTRACTORS AND CONTRACTING OFFICER PRIOR TO INSTALLATION.
26.03	NEW ELECTRICAL EQUIPMENT AND DEVICES. REFERENCE ELECTRICAL DRAWINGS.
26.06	NEW FIRE ALARM DEVICES. REFERENCE ELECTRICAL DRAWINGS.

INTERIOR ELEVATION LEGEND

	REPLACEMENT MATERIAL INSTALLED		NEW HOLE IN THE EXISTING WALL
	AREA REQUIRING RESTORATION DUE TO SIGNIFICANT MATERIAL DETERIORATION		EXISTING HOLE TO REMAIN
	EXISTING WALLS		NEW WALLS

THIS PAGE WAS PREPARED WITH COLORED LINES AND HATCHES. WHEN PRINTING, USE COLOR.



A/E FIRMS
PRIME/ARCH: STRATA ARCHITECTURE
1701 CHAM STREET, SUITE 100, KANSAS CITY, MO 64106-4700

DESIGNED: CA/AG
CADD: CA/ZA/EM
TECH. REVIEW: AG
DATE: 10.27.2023

SUB SHEET NO.
01
A6.7

TITLE OF SHEET MAURICE BATHHOUSE		DRAWING NO. 128
INTERIOR ELEVATIONS - PENETRATIONS		182951
REHABILITATE BATHHOUSES HOT SPRINGS NATIONAL PARK		PMIS/PKG NO. 318915
		SHEET 84 OF 286