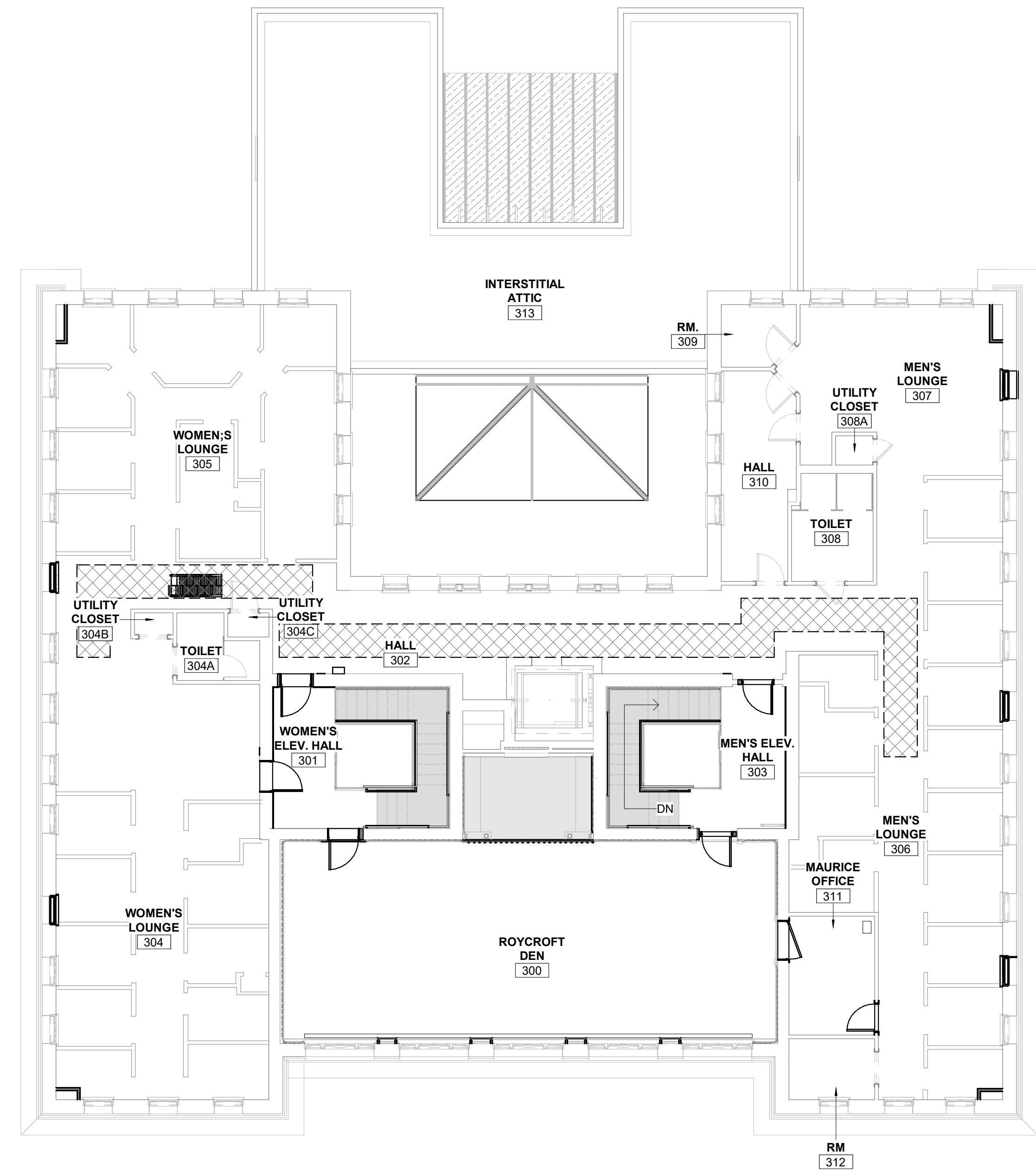
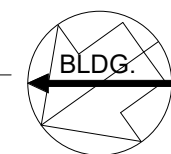
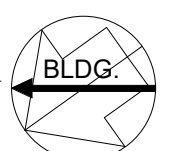


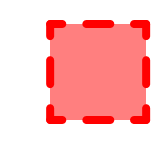
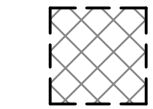
1  
A0.07 ACCESSIBILITY SECOND FLOOR PLAN  
1/8" = 1'-0" SCALE (A)



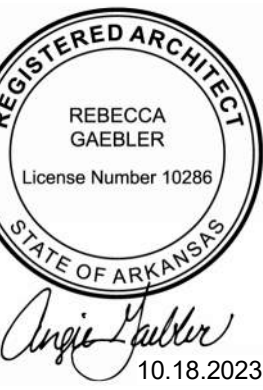
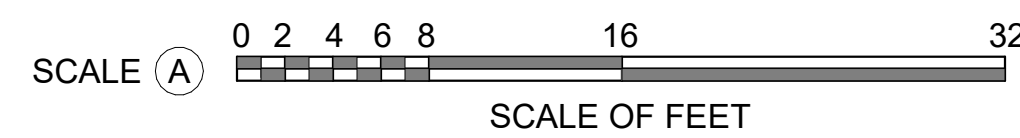
2  
A0.07 ACCESSIBILITY THIRD FLOOR PLAN  
1/8" = 1'-0" SCALE (A)



**ACCESSIBILITY PLAN LEGEND**

-  DOOR CLEARANCE
-  ACCESSIBLE PATH OF TRAVEL

THIS PAGE WAS PREPARED WITH COLORED LINES AND HATCHES. WHEN PRINTING, USE COLOR.



*Rebecca Gaebler*  
10.18.2023

A/E FIRMS PRIME/ARCH: STRATA ARCHITECTURE 1701 CHAK STREET, SUITE 100 KANSAS CITY, MO T: 816.474.0900	DESIGNED: CA/AG	SUB SHEET NO.  <b>01</b> <b>A0.07</b>	TITLE OF SHEET <b>MAURICE BATHHOUSE</b> <b>ACCESSIBILITY PLAN</b>	DRAWING NO. <b>128</b> <b>182951</b>
	CADD: CA/ZA/EM			PMIS/PKG NO. 318915
	TECH. REVIEW: AG		REHABILITATE BATHHOUSES HOT SPRINGS NATIONAL PARK	SHEET 20 OF 286
	DATE: 10.27.2023			