

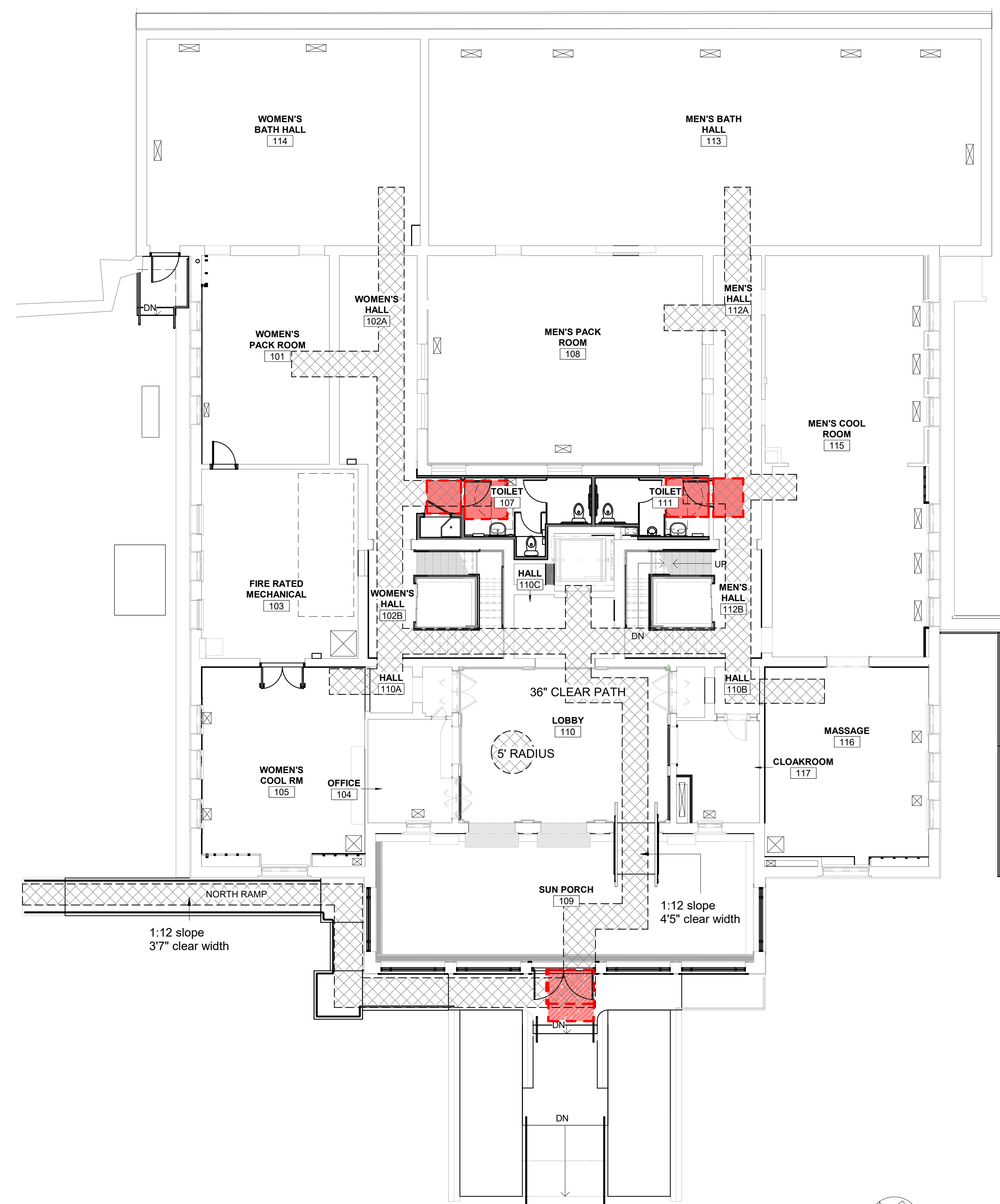


**1** ACCESSIBILITY BASEMENT FLOOR PLAN  
**A0.06** 1/8" = 1'-0" SCALE (A)

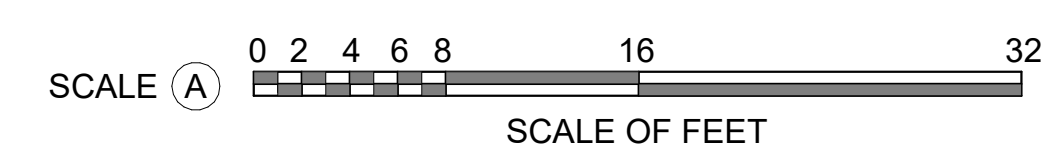
**ACCESSIBILITY PLAN LEGEND**

-  DOOR CLEARANCE
-  ACCESSIBLE PATH OF TRAVEL

THIS PAGE WAS PREPARED WITH COLORED LINES AND HATCHES. WHEN PRINTING, USE COLOR.



**2** ACCESSIBILITY FIRST FLOOR PLAN  
**A0.06** 1/8" = 1'-0" SCALE (A)



A/E FIRMS PRIME/ARCH: STRATA ARCHITECTURE 1701 OAK STREET, SUITE 100 KANSAS CITY, MO T: 816.474.0900	DESIGNED: CA/AG	SUB SHEET NO.  <h1 style="text-align: center;">01</h1> <h1 style="text-align: center;">A0.06</h1>	TITLE OF SHEET <b>MAURICE BATHHOUSE</b> <b>ACCESSIBILITY PLAN</b>  REHABILITATE BATHHOUSES HOT SPRINGS NATIONAL PARK	DRAWING NO. <b>128</b>
	CADD: CA/ZA/EM			PMIS/PKG NO. 318915
	TECH. REVIEW: AG			SHEET 19 OF 286
	DATE: 10.27.2023			

11/8/2023 5:38:18 PM