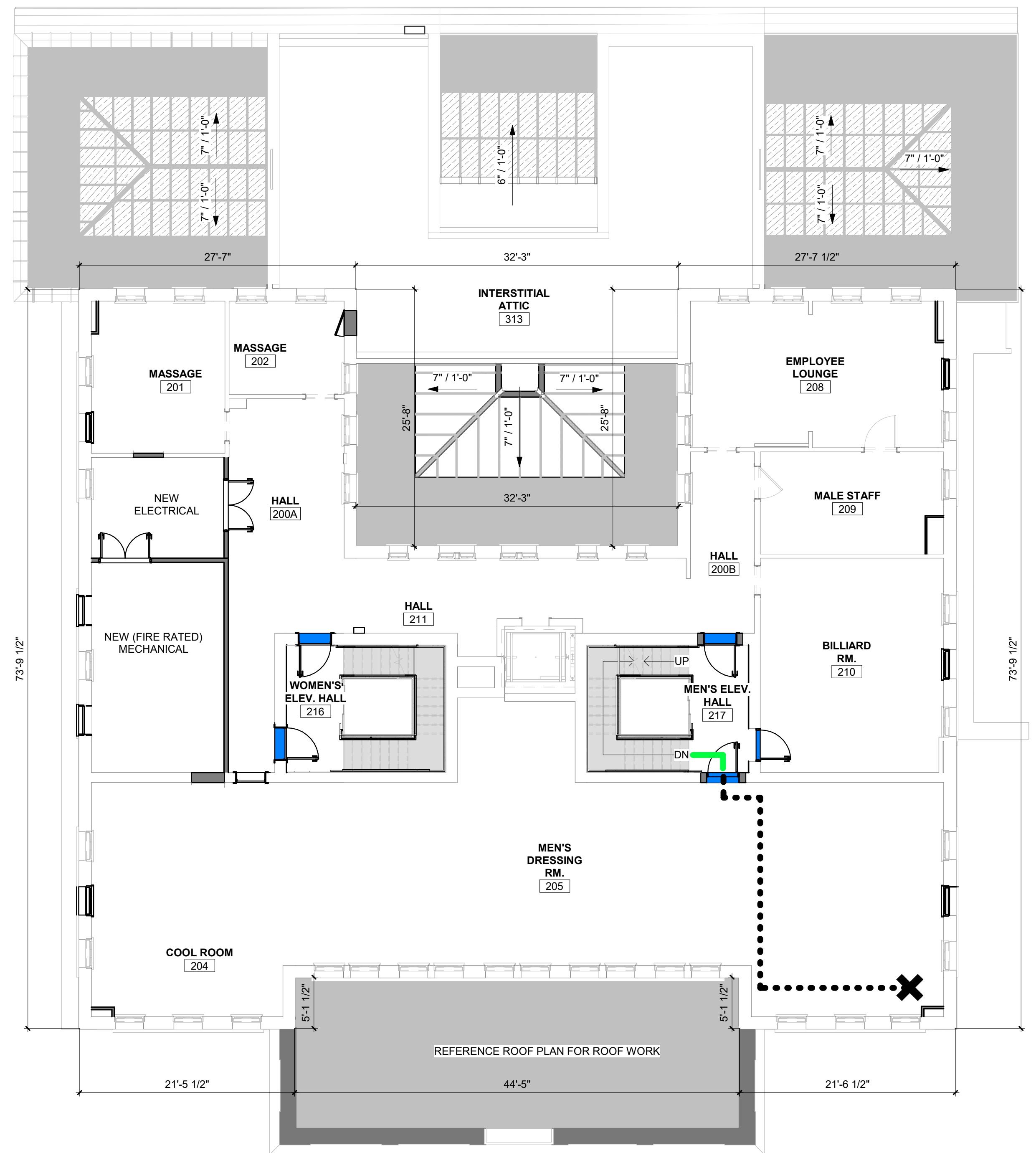


1 CODE ANALYSIS FIRST FLOOR PLAN
A0.04 1/8" = 1'-0" SCALE (A)

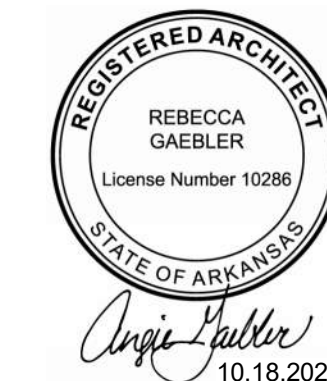


HISTORIC ROOM NAMES HAVE BEEN USED ON THESE DRAWINGS TO ILLUSTRATE THE HISTORIC FUNCTIONS OF THE BATHHOUSE SPACES. THESE ROOM NAMES DO NOT REFLECT THE ANTICIPATED FUTURE USE OF THE ROOMS AS PART OF THIS PHASE OF REHABILITATION WORK.

THIS PROJECT REPRESENTS A PARTIAL WHITE BOX OF THE MAURICE BUILDING, FOCUSING ON THE EXTERIOR REHABILITATION, INSTALLATION OF NEW UTILITIES, STRUCTURAL STABILIZATION, INSTALLATION OF NEW MECHANICAL, ELECTRICAL, PLUMBING, AND FIRE PROTECTION SYSTEMS, AND REHABILITATION OF CRITICAL PRIMARY SPACES. THE BUILDING WILL NOT BE OCCUPIABLE UPON COMPLETION OF THIS FIRST PHASE OF REHABILITATION. A FUTURE LEASEHOLDER WILL DETERMINE THE FINAL USE AND OCCUPANCY FOR THE BUILDING AND WILL COMPLETE PROPOSED REHABILITATION PLANS, INCLUDING UPDATED CODE AND LIFE SAFETY REVIEW, FOR THE NPS REGIONAL AHJ APPROVAL. THAT SCOPE OF WORK WILL INCLUDE INTERIOR REHABILITATION AND CUSTOMIZATION OF THE MECHANICAL, ELECTRICAL, PLUMBING, AND FIRE PROTECTION SYSTEMS TO ADDRESS THE NEW USE AND INTERIOR LAYOUT.

- CODE PLAN LEGEND**
- SMOKE SEALS/GASKETING REQUIRED AT DOOR
 - TRAVEL DISTANCE AND COMMON PATH OF TRAVEL
 - 1 HR FIRE RATED
 - COMMON PATH OF TRAVEL
- THIS PAGE WAS PREPARED WITH COLORED LINES AND HATCHES. WHEN PRINTING, USE COLOR.

2 CODE ANALYSIS SECOND FLOOR PLAN
A0.04 1/8" = 1'-0" SCALE (A)



A/E FIRMS
PRIME/ARCH:
STRATA ARCHITECTURE
1701 OAK STREET,
SUITE 100
KANSAS CITY, MO
T: 816.474.0900

DESIGNED: CA/AG
CADD: CA/ZA/EM
TECH. REVIEW: AG
DATE: 10.27.2023

SUB SHEET NO.
01
A0.04

TITLE OF SHEET
MAURICE BATHHOUSE
CODE ANALYSIS

REHABILITATE BATHHOUSES
HOT SPRINGS NATIONAL PARK

DRAWING NO.
128
182951

PMIS/PKG NO.
318915

SHEET
17 OF 286