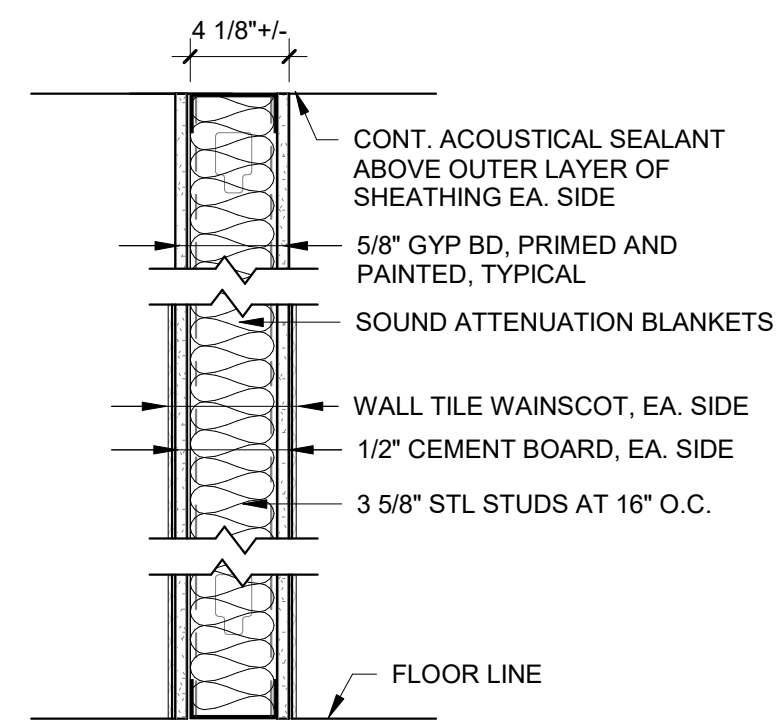
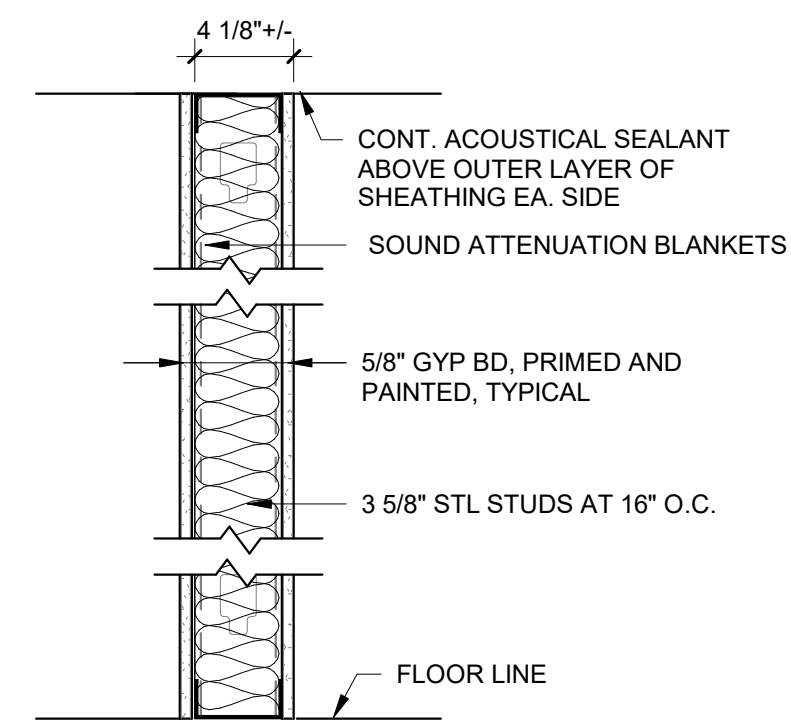


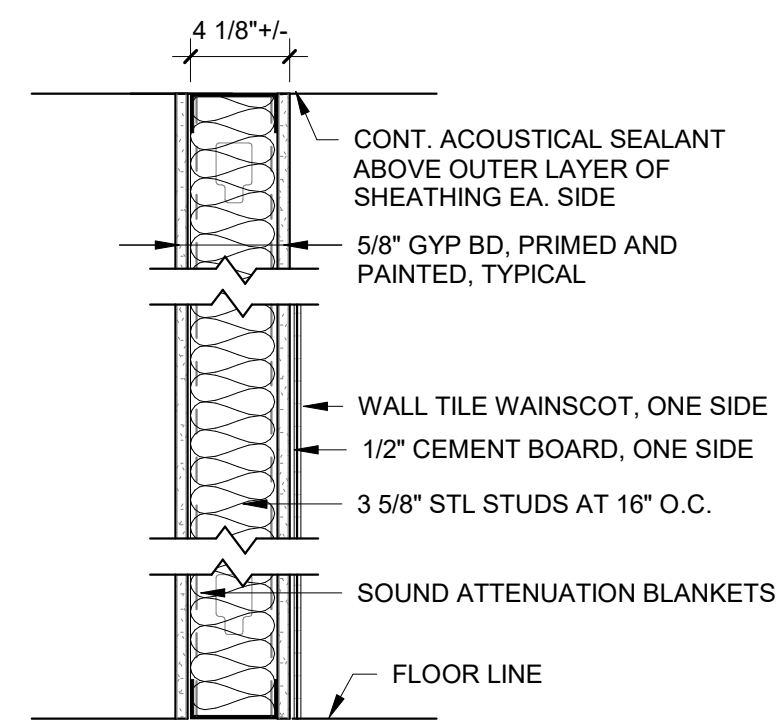
PARTITION TYPE LEGEND



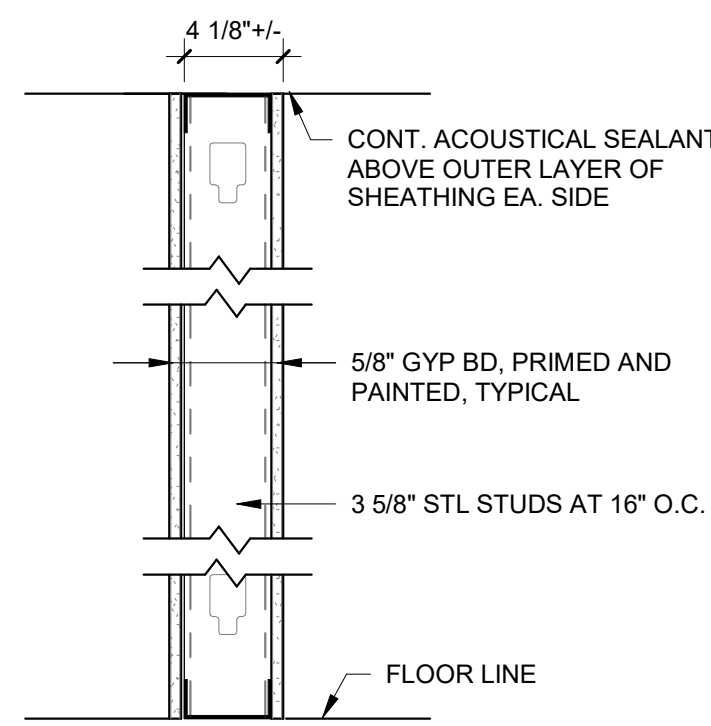
A1 ACOUSTIC GYPSUM BOARD ASSEMBLY



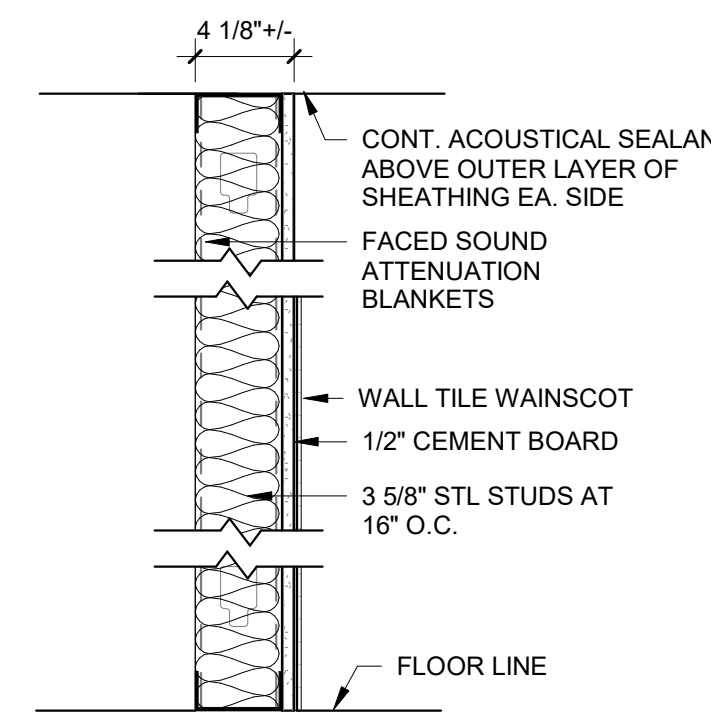
A2 ACOUSTIC GYPSUM BOARD ASSEMBLY



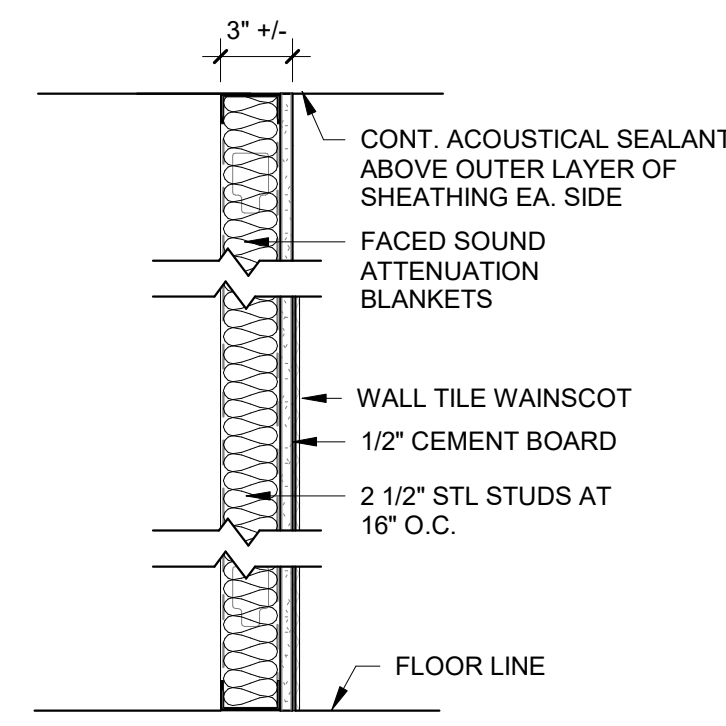
A3 ACOUSTIC GYPSUM BOARD ASSEMBLY



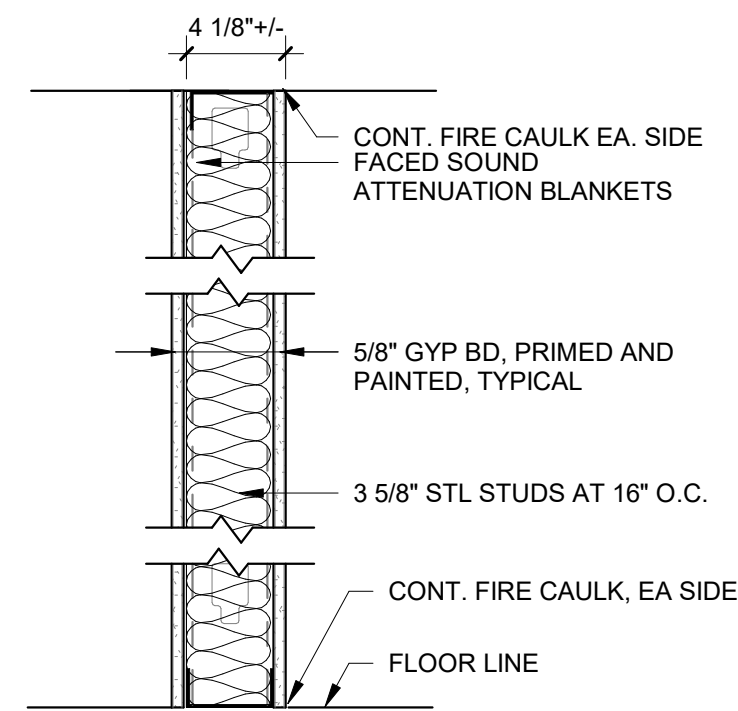
B1 GYPSUM BOARD ASSEMBLY



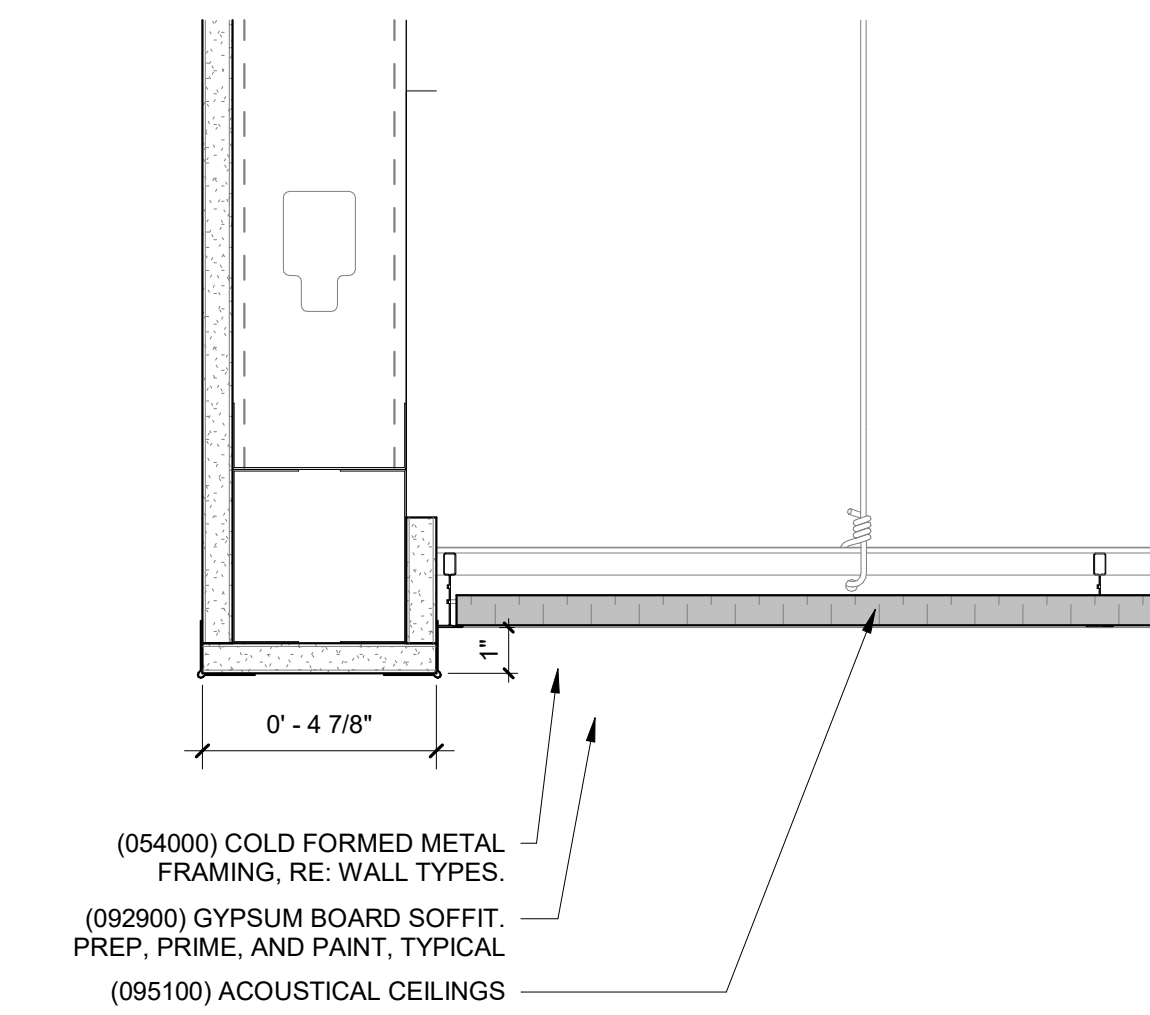
O1 ACOUSTIC GYPSUM BOARD ASSEMBLY



O2 ACOUSTIC GYPSUM BOARD ASSEMBLY



F1 (1 HOUR) FIRE RATED PARTITION



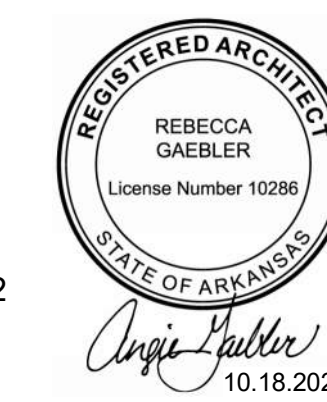
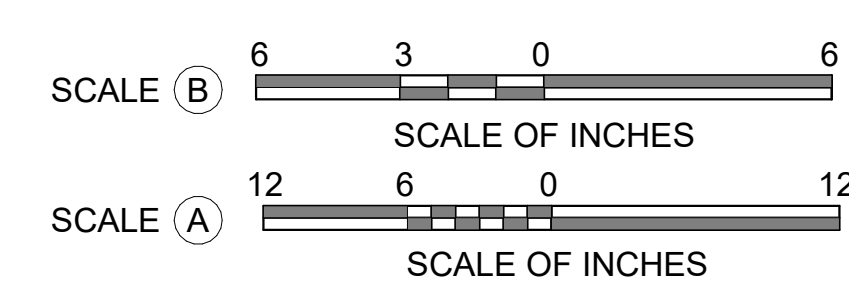
1 Soffit Detail
A0.02 3" = 1'-0" SCALE (A)

SYMBOLS LEGEND

(X)	STRUCTURAL/COLUMN GRID
DESCRIPTION 000'-0"	ELEVATION HEIGHT TAG
0'-0"	SPOT ELEVATION
X00 A000	EXTERIOR ELEVATION
Room name 101	ROOM TAG
000-0	DOOR TAG
XX	WALL TYPE
(X)	WINDOW TYPE
SF - A	STOREFRONT WINDOW
10' - 6 1/2"	CEILING HEIGHT
00.00	KEYED NOTE
X00 A000	INTERIOR ELEVATION
X00 A000 SIM	SECTION CALLOUT
X00 A000	DETAIL CALLOUT

PARTITION TYPES GENERAL NOTES
A. INSTALL NEW RESILIENT WALL BASE ON ALL NEW WALLS, TYPICAL.

11/6/2023 3:30:09 PM



A/E FIRMS	DESIGNED:	SUB SHEET NO.
PRIME/ARCH: STRATA ARCHITECTURE 1701 OAK STREET, SUITE 100 KANSAS CITY, MO T: 816.474.0900	CA/AG CADD: CA/ZA/EM TECH. REVIEW: AG DATE: 10.27.2023	01 A0.02

TITLE OF SHEET MAURICE BATHHOUSE GENERAL NOTES	DRAWING NO. 128 182951
REHABILITATE BATHHOUSES HOT SPRINGS NATIONAL PARK	PMIS/PKG NO. 318915
	SHEET 15 OF 286