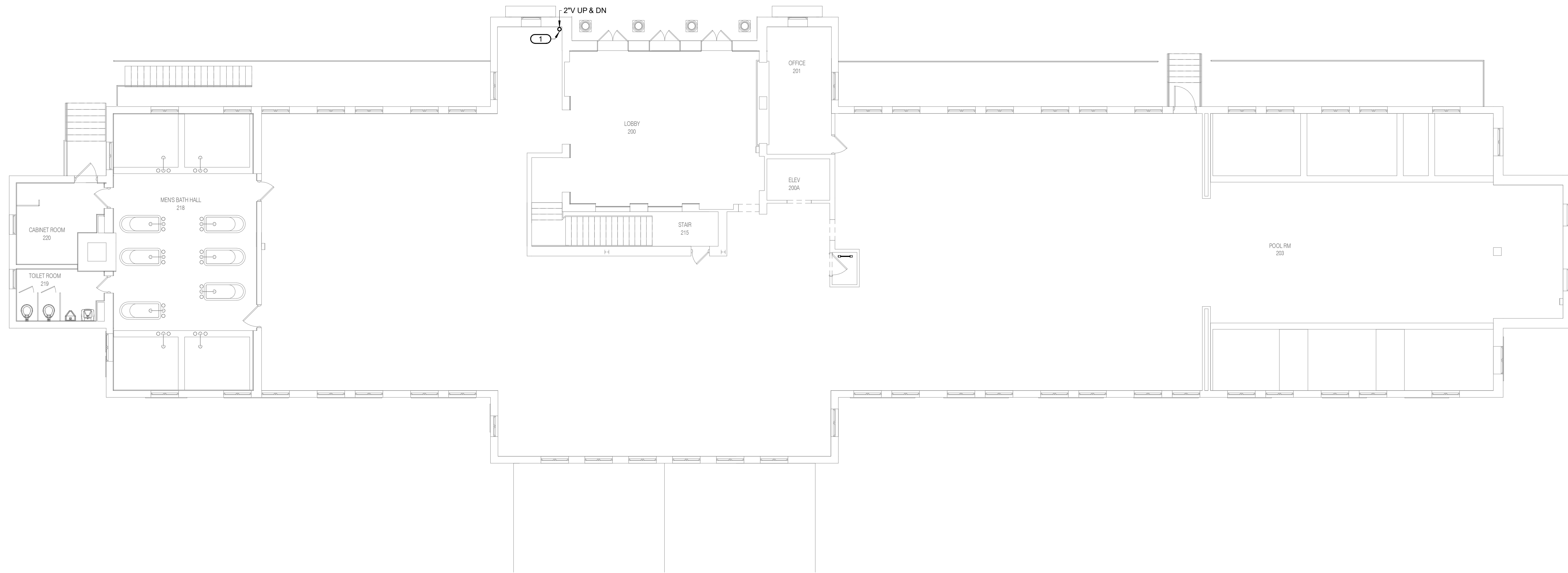


SHEET NOTES:

- ROUTING OF PIPING SHALL BE VERY CAREFULLY COORDINATED WITH EXISTING CONDITIONS, PRESERVATION ZONES AND HISTORIC NATURE OF BUILDING TO CONFORM WITH THE SECRETARY OF THE INTERIOR'S REHABILITATION REQUIREMENTS AND PRESERVATION BRIEFS RELATED TO MEP DESIGN AND INSTALLATION.

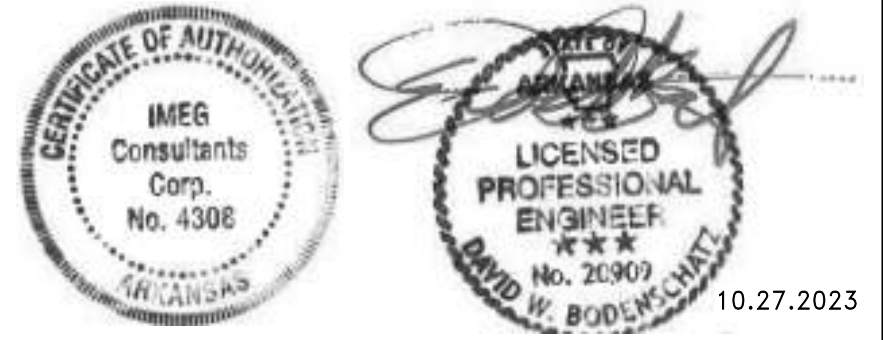
KEYNOTES: #

- ROUTE 2" VENT PIPE UP THROUGH ATTIC LEVEL AND UP THROUGH ROOF. CONTRACTOR TO FIELD COORDINATE FINAL ROOF PENETRATION LOCATION AND ROUTING REQUIREMENTS.



1 UPPER LEVEL PLAN - PLUMBING
P1.2 1/8" = 1'-0"

 1/8" = 1'-0" SCALE OF FEET



A/E FIRMS ARCH: QUINN EVANS 219 1/2 N. MAIN STREET ANN ARBOR, MI T: 734.663.5888 MEP/ENG: IMEG CORP. 1600 BALTIMORE STREET, SUITE 300 KANSAS CITY, MO T: 816.842.8437	DESIGNED: SGB	SUB SHEET NO. <div style="font-size: 2em; font-weight: bold;">02</div> <div style="font-size: 3em; font-weight: bold;">P1.2</div>	TITLE OF SHEET LIBBEY BATHHOUSE UPPER LEVEL PLAN - PLUMBING REHABILITATE BATHHOUSES HOT SPRINGS NATIONAL PARK	DRAWING NO. 128
	CADD: WMM			182951
	TECH. REVIEW: SGB			PMIS/PKG NO. 318915
	DATE: 10.27.2023			SHEET 230 OF 286

10/27/2023 11:50:46 AM