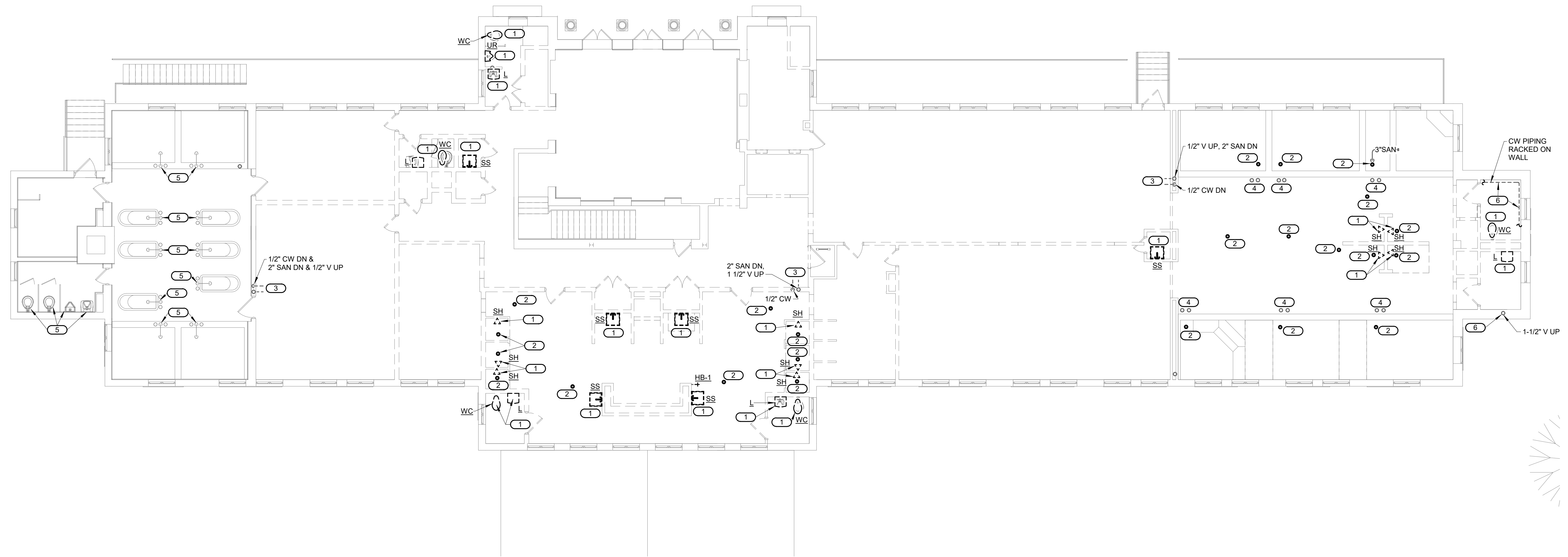


SHEET NOTES:

1. DEMO ALL EXISTING PLUMBING EQUIPMENT, FIXTURES, PIPING AND SUPPORTS UNLESS NOTED OTHERWISE.
2. HAZARDOUS MATERIALS ARE PRESENT IN/ON SELECT EXISTING MATERIALS - REFER TO HAZARDOUS MATERIAL REPORT FOR LOCATIONS, REFER TO SPECIFICATIONS FOR ABATEMENT, REMOVAL AND DISPOSAL.

KEYNOTES: #

1. DISCONNECT AND REMOVE EXISTING PLUMBING FIXTURE AND ASSOCIATED SANITARY WASTE, VENT, COLD AND HOT WATER PIPING. PATCH FLOOR PENETRATIONS TO MATCH EXISTING FLOOR.
2. DISCONNECT AND REMOVE EXISTING FLOOR DRAIN AND GROUT OPENING FLUSH WITH FLOOR.
3. DISCONNECT AND REMOVE COLD WATER, SANITARY AND VENT PIPING FROM REMOVED DRINKING FOUNTAINS.
4. DISCONNECT AND REMOVE EXISTING HOT AND COLD WATER ROUGH-INS FROM REMOVED POOL FILLER MIXING VALVES. PATCH FLOOR TO MATCH EXISTING.
5. EXISTING TO REMAIN.
6. DISCONNECT AND REMOVE EXISTING PIPING AND ASSOCIATED SUPPORTS.



1
PX1.2
UPPER LEVEL DEMOLITION PLAN - PLUMBING
 1/8" = 1'-0"

 1/8" = 1'-0" SCALE OF FEET

10.27.2023

A/E FIRMS ARCH: QUINN EVANS 219 1/2 N. MAIN STREET ANN ARBOR, MI T: 734.663.5888 MEP/ENG: IMEG CORP. 1400 BALTIMORE STREET, SUITE 300 KANSAS CITY, MO T: 816.842.8437	DESIGNED: SCB	SUB SHEET NO. 02 PX1.2	TITLE OF SHEET LIBBEY BATHHOUSE UPPER LEVEL DEMOLITION PLAN - PLUMBING REHABILITATE BATHHOUSES HOT SPRINGS NATIONAL PARK	DRAWING NO. 128 182951
	CADD: WMM			PMIS/PKG NO. 318915
	TECH. REVIEW: SCB			SHEET 228 OF 286
	DATE: 10.27.2023			

10/27/2023 11:50:51 AM