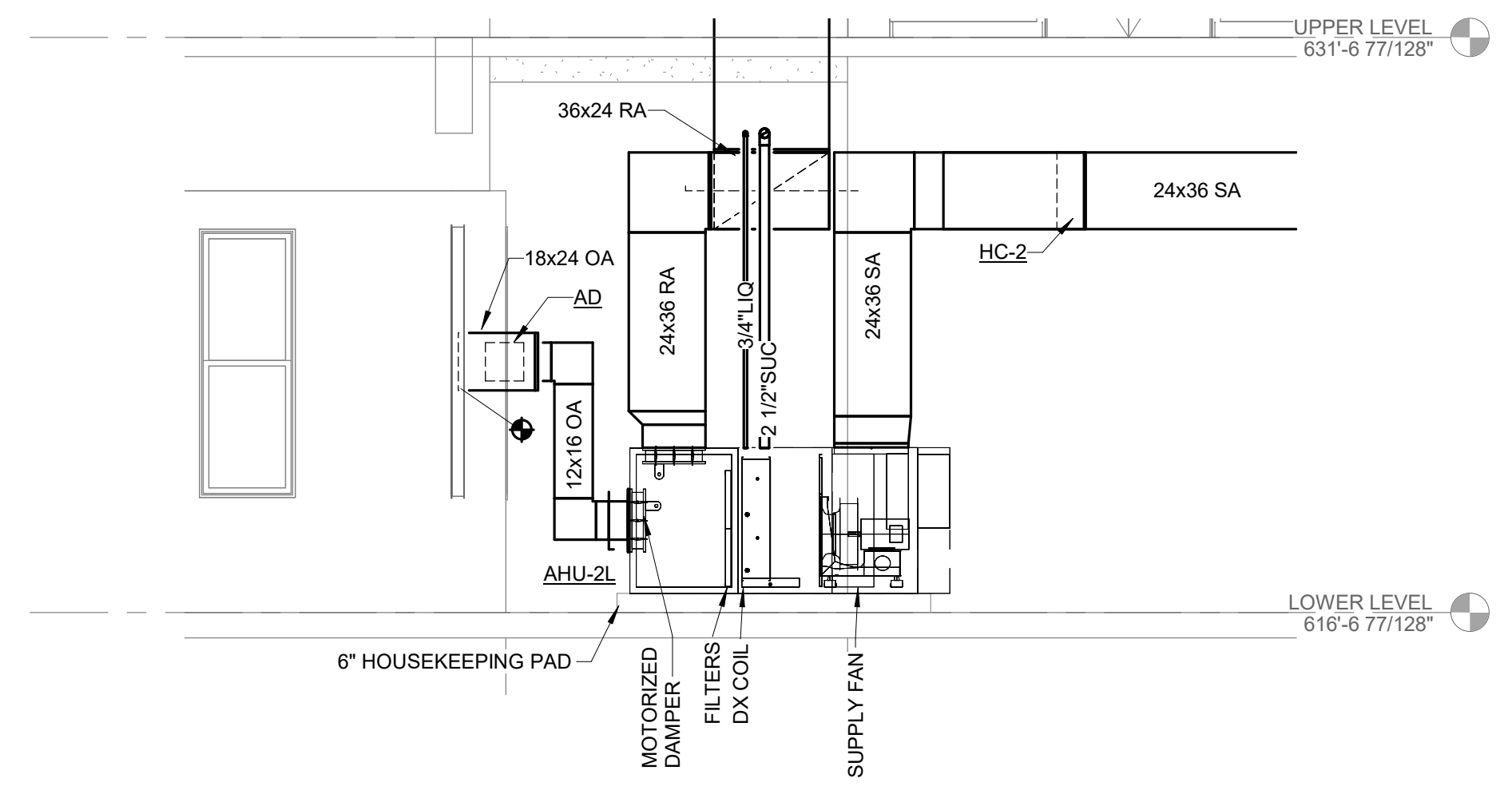


2 AHU-1L SECTION
1/4" = 1'-0"



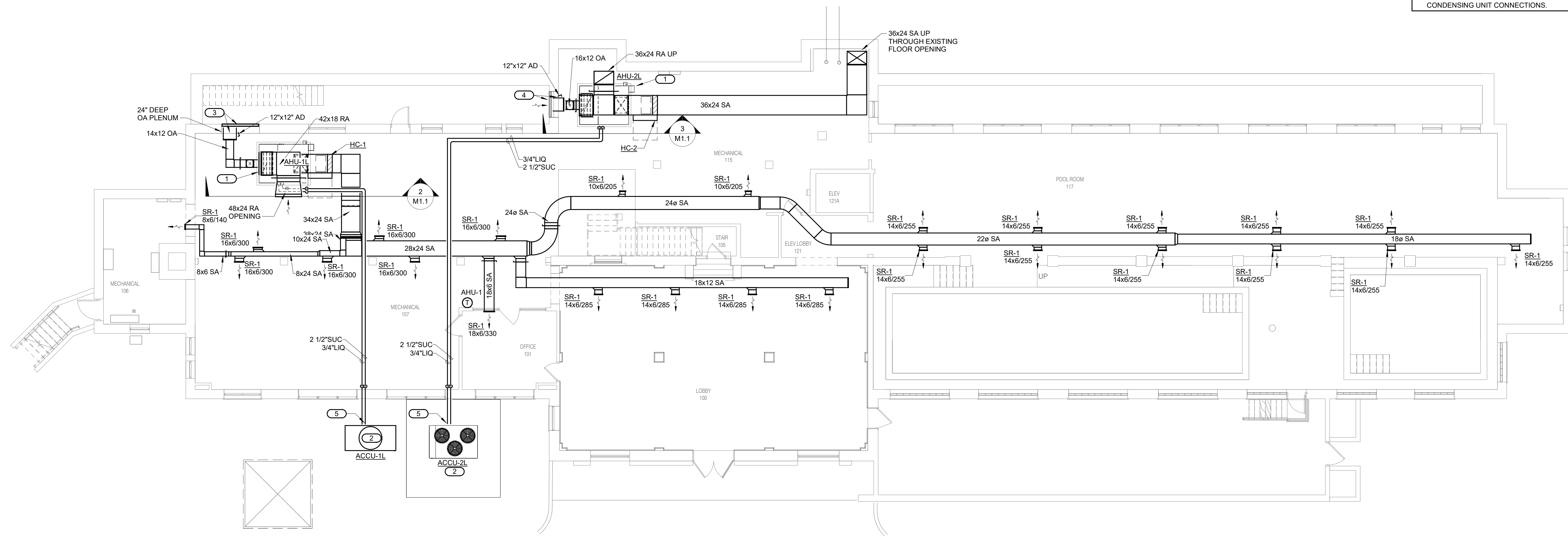
3 AHU-2L SECTION
1/4" = 1'-0"

SHEET NOTES:

- ROUTING OF TERMINAL EQUIPMENT, DUCTWORK AND PIPING SHALL BE VERY CAREFULLY COORDINATED WITH EXISTING CONDITIONS, PRESERVATION ZONES AND HISTORIC NATURE OF BUILDING TO CONFORM WITH THE SECRETARY OF THE INTERIOR'S REHABILITATION REQUIREMENTS AND PRESERVATION BRIEFS RELATED TO MEP DESIGN AND INSTALLATION.

KEYNOTES: #

- AIR HANDLING UNIT WITH MIN. OA, MERV 8 FILTRATION, AIRFOIL PLENUM SUPPLY FAN AND ELECTRIC DUCT HEATING COIL WITH SCR CONTROL SET UNIT ON 6" MIN. HIGH CONCRETE HOUSEKEEPING PAD. PROVIDE WITH INTEGRAL CONTROLLER AND 7-DAY PROGRAMMABLE THERMOSTAT.
- CONDENSING UNIT ANCHORED TO CONCRETE PADS WITH ISOLATION MOUNTS. ROUTE REFRIGERANT PIPING TO AIR HANDLING UNIT. PROVIDE REFRIGERANT PIPING RAIN SHIELDS AT PIPING PENETRATIONS OF EXTERIOR WALL.
- INSTALL NEW 5'-9"x7'-1" RUSKIN ELF 375 DX OR EQUAL LOUVER FULL SIZE OF EXISTING WINDOW OPENING. FIELD VERIFY EXISTING OPENING SIZE. PROVIDE 24" DEEP INSULATED OA PLENUM CONNECTED TO LOUVER. BLANK OFF UNUSED PORTION OF LOUVER WITH INSULATED SHEET METAL SANDWICH PANEL.
- CONNECT NEW INSULATED 24" DEEP PLENUM TO EXISTING LOUVER. BLANK OFF UNUSED PORTION OF LOUVER WITH INSULATED SHEET METAL SANDWICH PANEL.
- PROVIDE HOT GAS BYPASS SYSTEM AT CONDENSING UNIT CONNECTIONS.



1 LOWER LEVEL PLAN - MECHANICAL
M1.1
1/8" = 1'-0"
8' 0' 8' 16'
1/8" = 1'-0" SCALE OF FEET

CERTIFICATE OF AUTHORIZATION
IMEG Consultants Corp. No. 4306
LICENSED PROFESSIONAL ENGINEER
No. 26309
10.27.2023

A/E FIRMS ARCH: QUINN EVANS 219 1/2 N. MAIN STREET ANN ARBOR, MI T: 734.663.5888 MEP/ENG: IMEG CORP. 1400 BALTIMORE STREET, SUITE 300 KANSAS CITY, MO T: 816.842.8437	DESIGNED: SGB CADD: WMM TECH. REVIEW: SGB DATE: 10.27.2023	SUB SHEET NO. 02 M1.1	TITLE OF SHEET LIBBEY BATHHOUSE LOWER LEVEL PLAN - MECHANICAL REHABILITATE BATHHOUSES HOT SPRINGS NATIONAL PARK	DRAWING NO. 128 182951 PMIS/PKG NO. 318915 SHEET 193 OF 286
--	---	---------------------------------	--	---

10/27/2023 11:50:36 AM