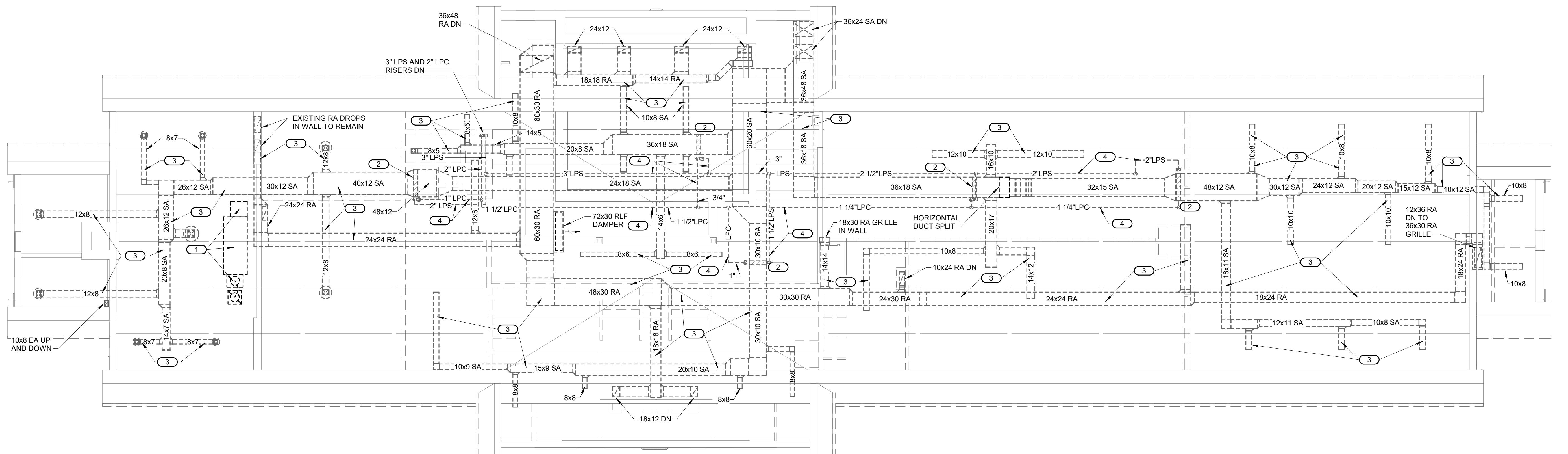


- SHEET NOTES:**
1. DEMO ALL EXISTING MECHANICAL EQUIPMENT, DUCTWORK, PIPING AND SUPPORTS UNLESS NOTED OTHERWISE.
 2. ALL DARK AND DASHED EQUIPMENT, DUCTWORK, PIPING AND ASSOCIATED SUPPORTS ARE TO BE REMOVED IN ITS ENTIRETY AND EXISTING PENETRATIONS PATCHED. PIPING SHOWN LIGHTLY IS TO REMAIN.
 3. HAZARDOUS MATERIALS ARE PRESENT IN/ON SELECT EXISTING MATERIALS - REFER TO HAZARDOUS MATERIAL REPORT FOR LOCATIONS. REFER TO SPECIFICATIONS FOR ABATEMENT, REMOVAL AND DISPOSAL.

- KEYNOTES: (#)**
1. DISCONNECT AND REMOVE EXISTING DX FAN COIL UNIT AND ALL ASSOCIATED DUCTWORK, REFRIGERANT PIPING TO CONDENSING UNIT, CONTROLS AND SUPPORTS.
 2. DISCONNECT AND REMOVE EXISTING STEAM HEATING COIL AND ASSOCIATED LPS AND LPC PIPING.
 3. DISCONNECT AND REMOVE EXISTING DUCTWORK AND ASSOCIATED DIFFUSERS AND SUPPORTS.
 4. DISCONNECT AND REMOVE EXISTING PIPING AND ASSOCIATED VALVES AND SUPPORTS.



1
MX1.3 ATTIC DEMOLITION PLAN - MECHANICAL
1/8" = 1'-0"

8' 0' 8' 16'
1/8" = 1'-0" SCALE OF FEET

10.27.2023

A/E FIRMS ARCH: QUINN EVANS 219 1/2 N. MAIN STREET ANN ARBOR, MI T: 734.663.5888 MEP/ENG: IMEG CORP. 1400 BALTIMORE STREET SUITE 300 KANSAS CITY, MO T: 816.842.8437	DESIGNED: SGB	SUB SHEET NO. 02 MX1.3	TITLE OF SHEET LIBBEY BATHHOUSE ATTIC DEMOLITION PLAN - MECHANICAL REHABILITATE BATHHOUSES HOT SPRINGS NATIONAL PARK	DRAWING NO. 128 182951
	CADD: WMM			PMIS/PKG NO. 318915
TECH. REVIEW: SGB	DATE: 10.27.2023			SHEET 234 OF 286

10/27/2023 11:50:43 AM