

1 FIRE BARRIER PENETRATION

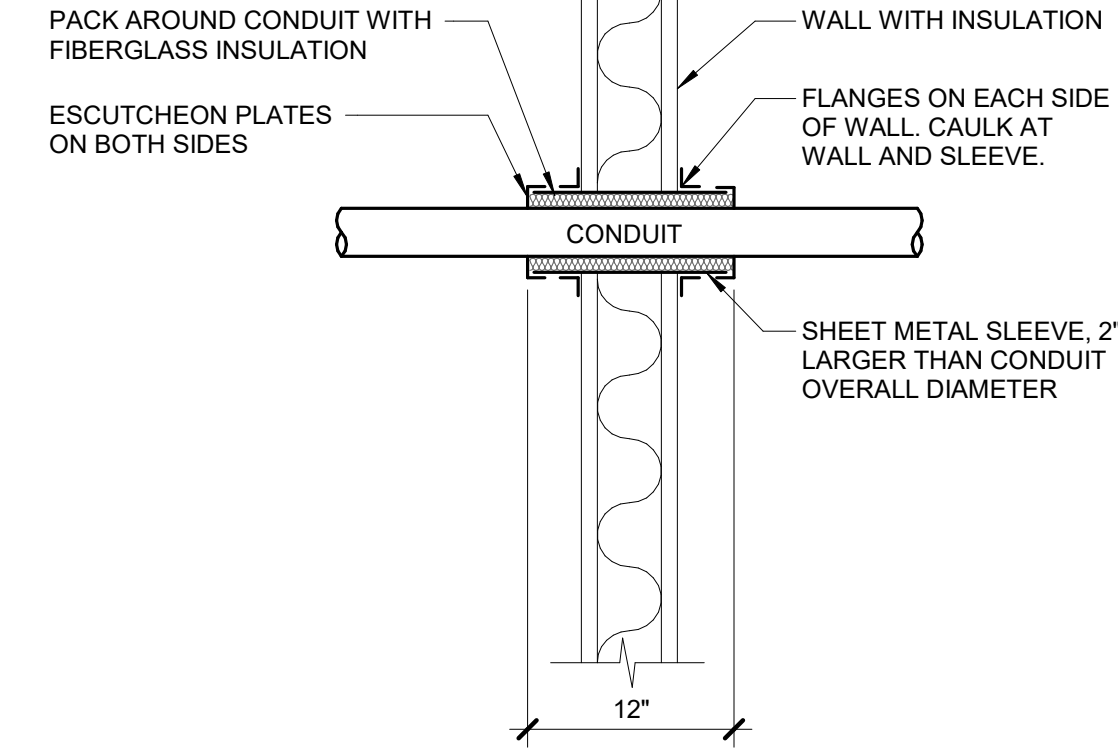
NO SCALE

NOTES:

1. THIS GENERAL DETAIL APPLIES TO ALL ITEMS PENETRATING FIRE RATED WALLS OR FLOORS. THE INTENT IS TO MAINTAIN THE FIRE RATING AND TO ALLOW LONGITUDINAL MOVEMENT. REFER TO SPECIFICATION FOR ADDITIONAL INFORMATION.

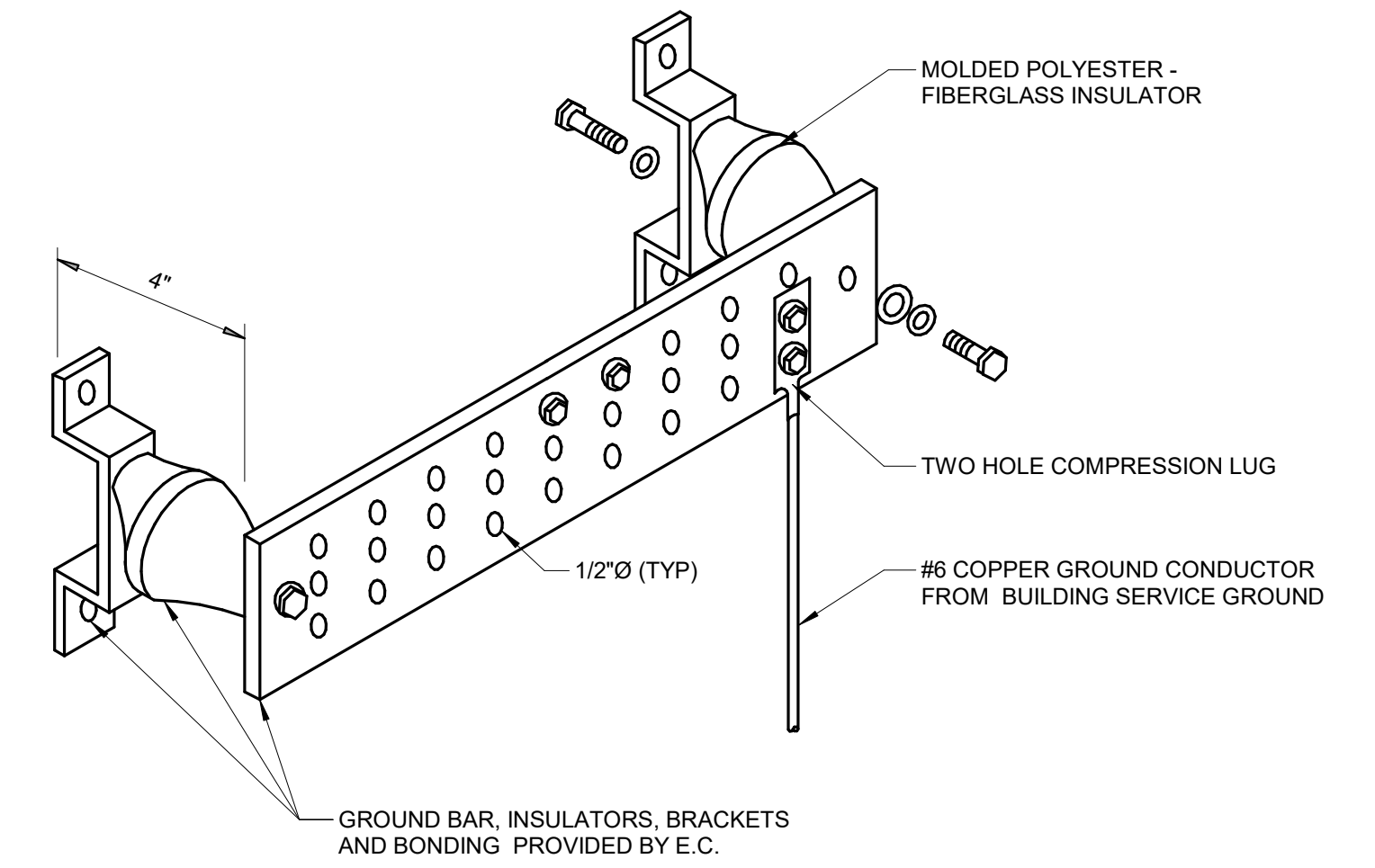
KEYNOTES: #

1. SCHEDULE 5 PIPE SLEEVE EMBEDDED IN WALL OR FLOOR, OR SMOOTH CORE DRILL. EACH CONTRACTOR FURNISHES SLEEVE TO G.C., COORDINATES SLEEVE LOCATIONS AND DEBURS SLEEVE. G.C. BUILDS SLEEVE INTO WALL OR FLOOR ALLOWING NO GAP AROUND SLEEVE. IF SLEEVE IS NOT PROVIDED WHEN WALL OR FLOOR IS BUILT, CONTRACTOR SHALL INSTALL SLEEVE. SLEEVE SIZE SHALL ALLOW ANNULAR SPACE REQUIRED BY THE SELECTED FIRE STOP SYSTEM.
2. INSTALL BACKING MATERIAL, SUCH AS MINERAL WOOL SAFING, AS REQUIRED FOR FIRE STOP SYSTEM. INSTALL IN ACCORDANCE WITH FIRE STOP SYSTEM APPLICATION LISTING. SECURE TO WALL OR FLOOR TO ALLOW LONGITUDINAL MOVEMENT OF PENETRATING ITEM WITHOUT MOVEMENT OF FIRE BARRIER.
3. WATER-TIGHT WELDED 1"x1" 20 GAUGE MINIMUM GALVANIZED SHEET METAL ANGLE FRAME, BY CONTRACTOR IN EQUIPMENT ROOMS FOR WATER STOP. PLACE A BEAD OF WATERPROOF SEALANT BETWEEN FLOOR AND BOTTOM OF ANGLE FRAME. SECURE TO FLOOR WITH MASONRY ANCHORS IN CORNERS AND ON 12" MAXIMUM CENTERS. MULTIPLE PENETRATING ITEMS MAY BE ENCLOSED IN ONE FRAME.



2 CONDUIT WALL PENETRATION

NO SCALE

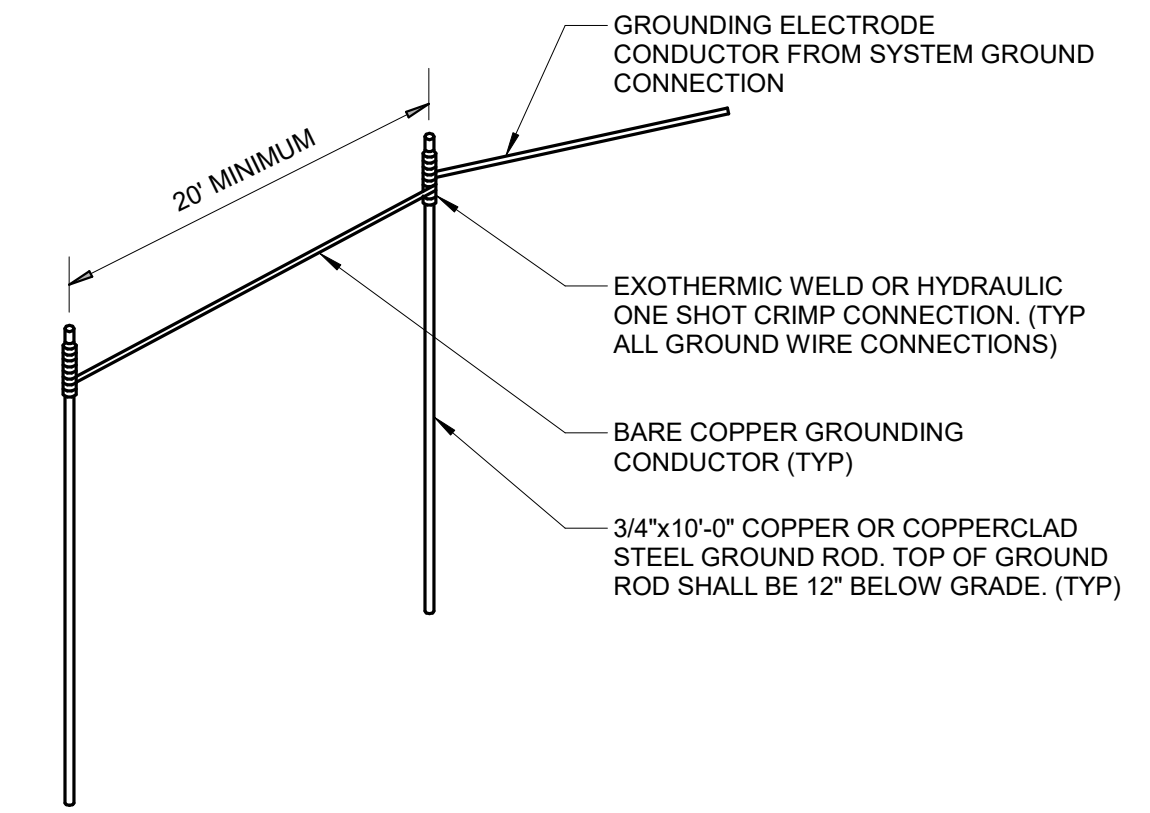


3 GROUND BAR (GB) AND INTERSYSTEM BONDING TERMINAL (IBT) DETAIL

NO SCALE

NOTES:

1. MOUNT BAR AT +6'-6" A.F.F.
2. STANDOFF INSULATORS MUST BE PROVIDED WHEN ZONING THE BAR.



4 GROUND GRID DETAIL

NO SCALE



10.27.2023

A/E FIRMS ARCH: QUINN EVANS 219 1/2 N. MAIN STREET ANN ARBOR, MI T: 734.663.5888 MEP/ENG: IMEG CORP. 1400 BALTIMORE STREET, SUITE 300 KANSAS CITY, MO T: 816.842.8437	DESIGNED: ZMB	SUB SHEET NO. 02 E5.0	TITLE OF SHEET LIBBEY BATHHOUSE ELECTRICAL DETAILS REHABILITATE BATHHOUSES HOT SPRINGS NATIONAL PARK	DRAWING NO. 128 182951
	CADD: WMM			PMIS/PKG NO. 318915
TECH. REVIEW: PIP	DATE: 10.27.2023			SHEET 248 OF 286