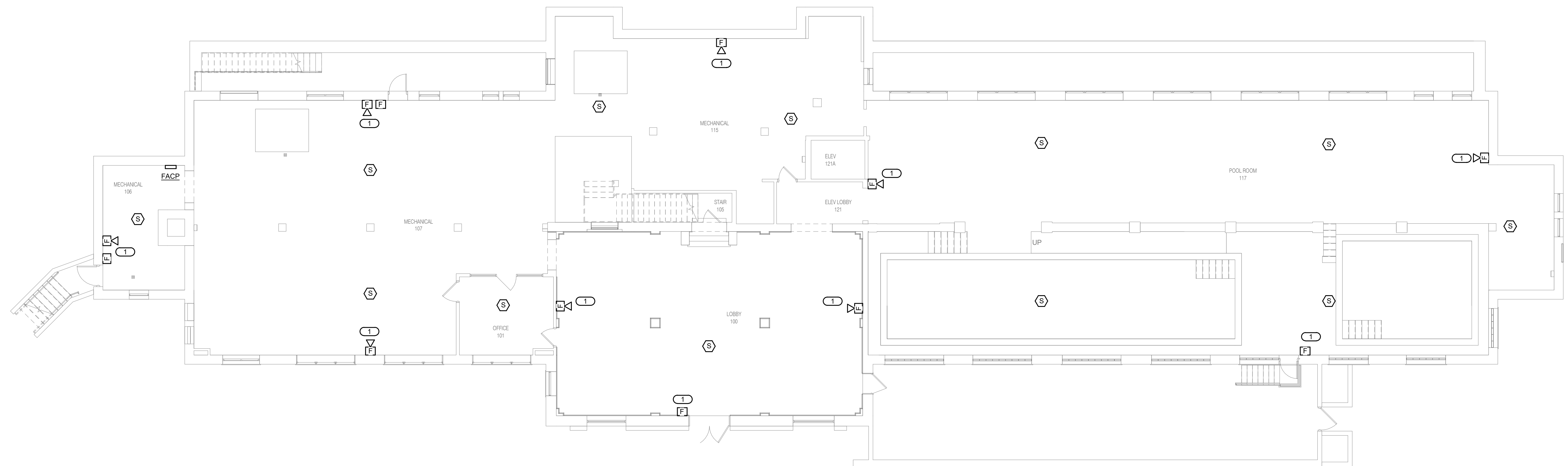


**SHEET NOTES:**

1. REFER TO SHEET E0.0 AND E0.1 FOR GENERAL NOTES AND SYMBOLS.
2. ROUTING OF WIRE AND CONDUIT AND MOUNTING OF FIXTURES AND DEVICES SHALL BE VERY CAREFULLY COORDINATED WITH EXISTING CONDITIONS, PRESERVATION ZONES, AND HISTORIC NATURE OF BUILDING AND SHALL CONFORM WITH THE NATIONAL PARKS REQUIREMENTS AND GUIDELINES.
3. ALL CONDUIT SHALL BE INSTALLED PARALLEL AND PERPENDICULAR TO BUILDING STRUCTURE.
4. ALL FIRE ALARM WIRING SHALL BE INSTALLED IN CONDUIT.

**KEYNOTES:** #

1. SURFACE MOUNT DEVICE(S) FOR EASY INSTALLATION AND FUTURE REMOVAL.



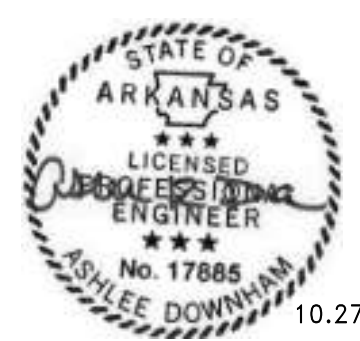
1  
EF1.1

LOWER LEVEL PLAN - FIRE ALARM

1/8" = 1'-0"

8' 0' 8' 16'

1/8" = 1'-0" SCALE OF FEET



10.27.2023

A/E FIRMS ARCH: <b>QUINN EVANS</b> 219 1/2 N. MAIN STREET ANN ARBOR, MI T: 734.663.5888 MEP/ENG: <b>IMEG CORP.</b> 1400 BALTIMORE STREET, SUITE 300 KANSAS CITY, MO T: 816.842.8437	DESIGNED: ZMB	SUB SHEET NO.  <b>02</b> <b>EF1.1</b>	TITLE OF SHEET <b>LIBBEY BATHHOUSE</b> <b>LOWER LEVEL PLAN - FIRE ALARM</b>  REHABILITATE BATHHOUSES HOT SPRINGS NATIONAL PARK	DRAWING NO. <b>128</b> <b>182951</b>
	CADD: WMM			PMIS/PKG NO. 318915
DATE: 10.27.2023	TECH. REVIEW: PIP	SHEET 246 OF 286		