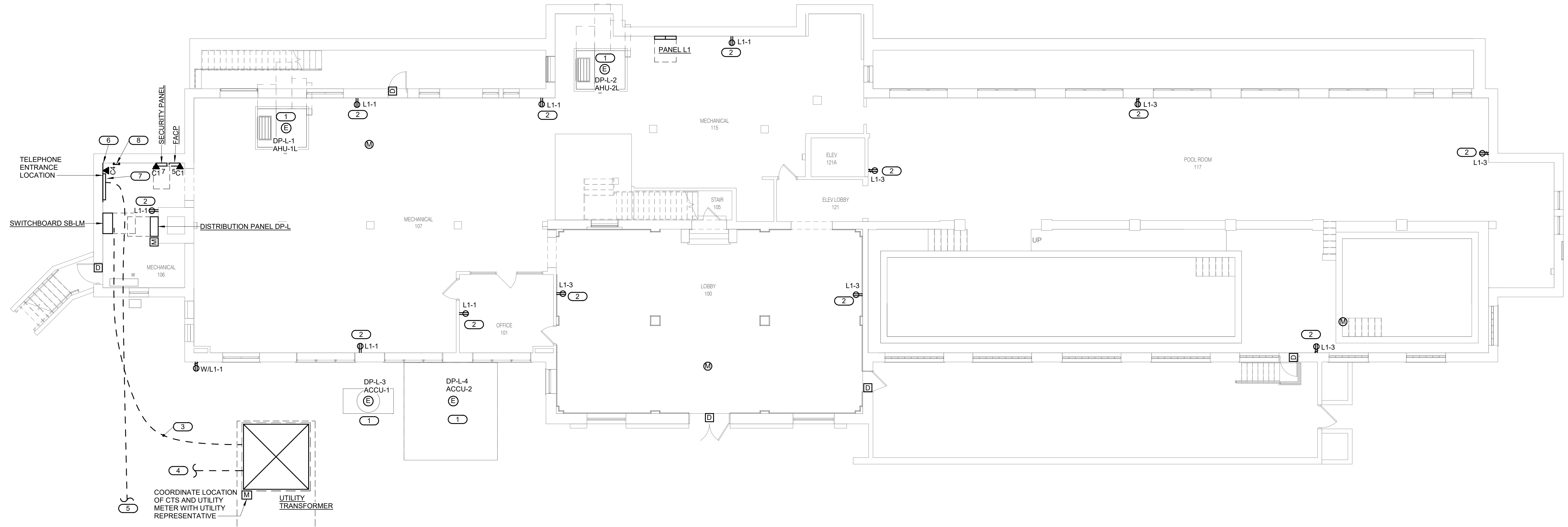
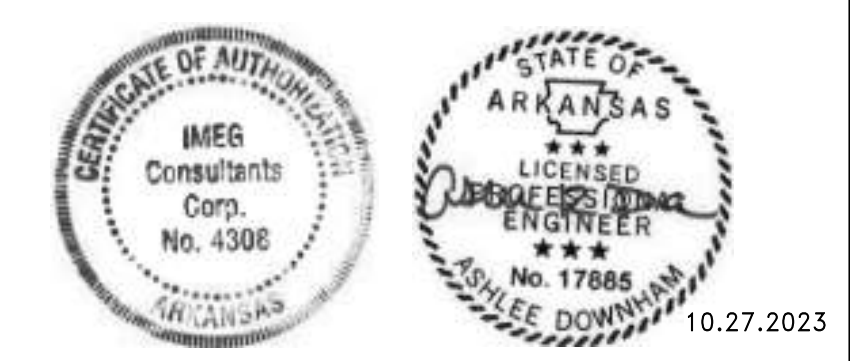


- SHEET NOTES:**
1. REFER TO SHEET E0.0 AND E0.1 FOR GENERAL NOTES AND SYMBOLS.
 2. ROUTING OF WIRE AND CONDUIT AND MOUNTING OF FIXTURES AND DEVICES SHALL BE VERY CAREFULLY COORDINATED WITH EXISTING CONDITIONS, PRESERVATION ZONES, AND HISTORIC NATURE OF BUILDING AND SHALL CONFORM WITH THE NATIONAL PARKS REQUIREMENTS AND GUIDELINES.
 3. ALL CONDUIT SHALL BE INSTALLED PARALLEL AND PERPENDICULAR TO BUILDING STRUCTURE.
 4. ALL POWER CIRCUITS ON THIS SHEET SHALL BE CONNECTED TO PANEL L1, UNLESS NOTED OTHERWISE.
 5. ALL POWER, SECURITY AND LOW-VOLTAGE WIRING SHALL BE INSTALLED IN CONDUIT.

- KEYNOTES: #**
1. CONNECT TO NEW EQUIPMENT AND DISCONNECT AS REQUIRED.
 2. SURFACE MOUNT DEVICE(S) FOR EASY INSTALLATION AND FUTURE REMOVAL.
 3. PROPOSED MAIN SERVICE CONDUIT ROUTING. SEE RISER DIAGRAM FOR MORE INFORMATION.
 4. PROPOSED ELECTRICAL SERVICE CONDUIT ROUTING. SEE RISER DIAGRAM FOR MORE INFORMATION. COORDINATE EXACT ROUTING WITH CIVIL ENGINEER AND UTILITY REPRESENTATIVE.
 5. PROPOSED 4" TELECOMMUNICATION CONDUIT ROUTING TO PROPERTY LINE. COORDINATE EXACT ROUTING WITH CIVIL ENGINEER AND AT&T REPRESENTATIVE.
 6. 3/4" FIRE RETARDANT PLYWOOD, INSTALL AT 3'-6" AFF TO 7'-6" AFF.
 7. AT&T NEW TELEPHONE EQUIPMENT. COORDINATE INSTALLATION WITH AT&T REPRESENTATIVE.
 8. TELECOMMUNICATIONS GROUND BUSBAR (TGB), MOUNT AT 7'-0" AFF.



1 LOWER LEVEL PLAN - POWER
 EP1.1
 1/8" = 1'-0"
 8' 0' 8' 16'
 1/8" = 1' - 0" SCALE OF FEET



A/E FIRMS ARCH: QUINN EVANS 219 1/2 N. MAIN STREET ANN ARBOR, MI T: 734.663.5888 MEP/ENG: IMEG CORP. 1400 BALTIMORE STREET, SUITE 300 KANSAS CITY, MO T: 816.842.8437	DESIGNED: ZMB	SUB SHEET NO. 02 EP1.1	TITLE OF SHEET LIBBEY BATHHOUSE LOWER LEVEL PLAN - POWER REHABILITATE BATHHOUSES HOT SPRINGS NATIONAL PARK	DRAWING NO. 128 182951
	CADD: WMM			PMIS/PKG NO. 318915
TECH. REVIEW: PIP	DATE: 10.27.2023			SHEET 244 OF 286

10/27/2023 11:50:28 AM