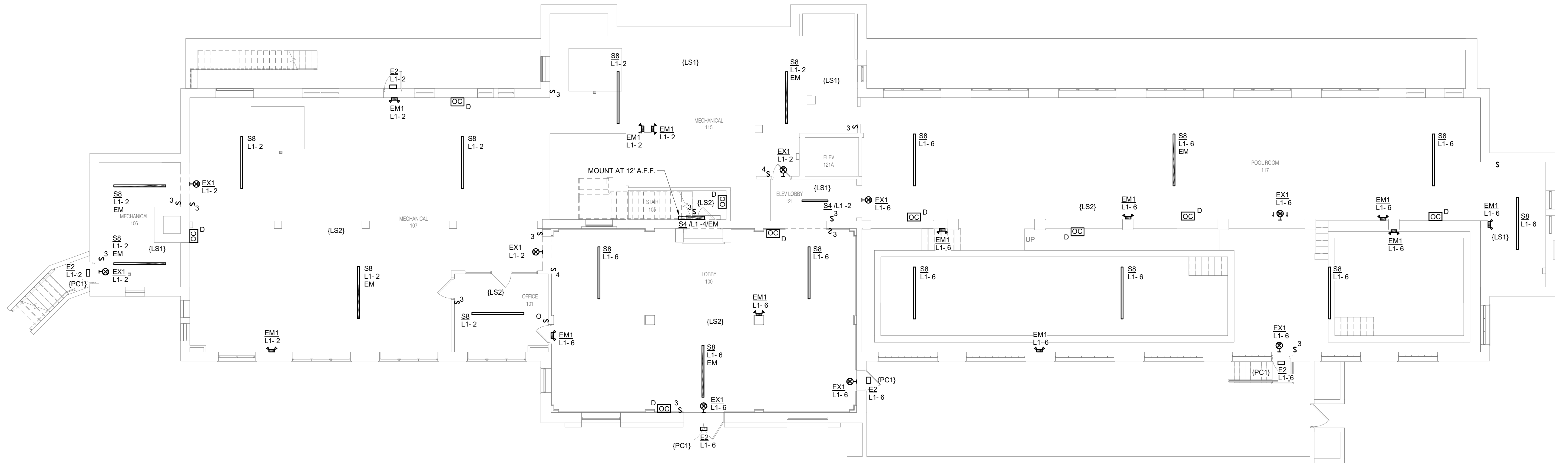


- SHEET NOTES:**
1. REFER TO SHEET E0.0 AND E0.1 FOR GENERAL NOTES AND SYMBOLS.
 2. ROUTING OF WIRE AND CONDUIT AND MOUNTING OF FIXTURES AND DEVICES SHALL BE VERY CAREFULLY COORDINATED WITH EXISTING CONDITIONS, PRESERVATION ZONES, AND HISTORIC NATURE OF BUILDING AND SHALL CONFORM WITH THE NATIONAL PARKS REQUIREMENTS AND GUIDELINES.
 3. SURFACE MOUNT SWITCHES FOR EASY INSTALLATION AND FUTURE REMOVAL.
 4. ALL CONDUIT SHALL BE INSTALLED PARALLEL AND PERPENDICULAR TO BUILDING STRUCTURE.
 5. ALL LIGHTING CIRCUITS ON THIS SHEET SHALL BE CONNECTED TO PANEL L1, UNLESS NOTED OTHERWISE.



1
EL1.1 LOWER LEVEL PLAN - LIGHTING
1/8" = 1'-0"

1/8" = 1'-0" SCALE OF FEET



10.27.2023

A/E FIRMS ARCH: QUINN EVANS 219 1/2 N. MAIN STREET ANN ARBOR, MI T: 734.663.5888 MEPI/ENG: IMEG CORP. 1400 BALTIMORE STREET, SUITE 300 KANSAS CITY, MO T: 816.842.8437	DESIGNED: ZMB	SUB SHEET NO. 02 EL1.1	TITLE OF SHEET LIBBEY BATHHOUSE LOWER LEVEL PLAN - LIGHTING REHABILITATE BATHHOUSES HOT SPRINGS NATIONAL PARK	DRAWING NO. 128 182951
	CADD: WMM			PMIS/PKG NO. 318915
TECH. REVIEW: PIP	DATE: 10.27.2023			SHEET 242 OF 286

10/27/2023 11:50:26 AM