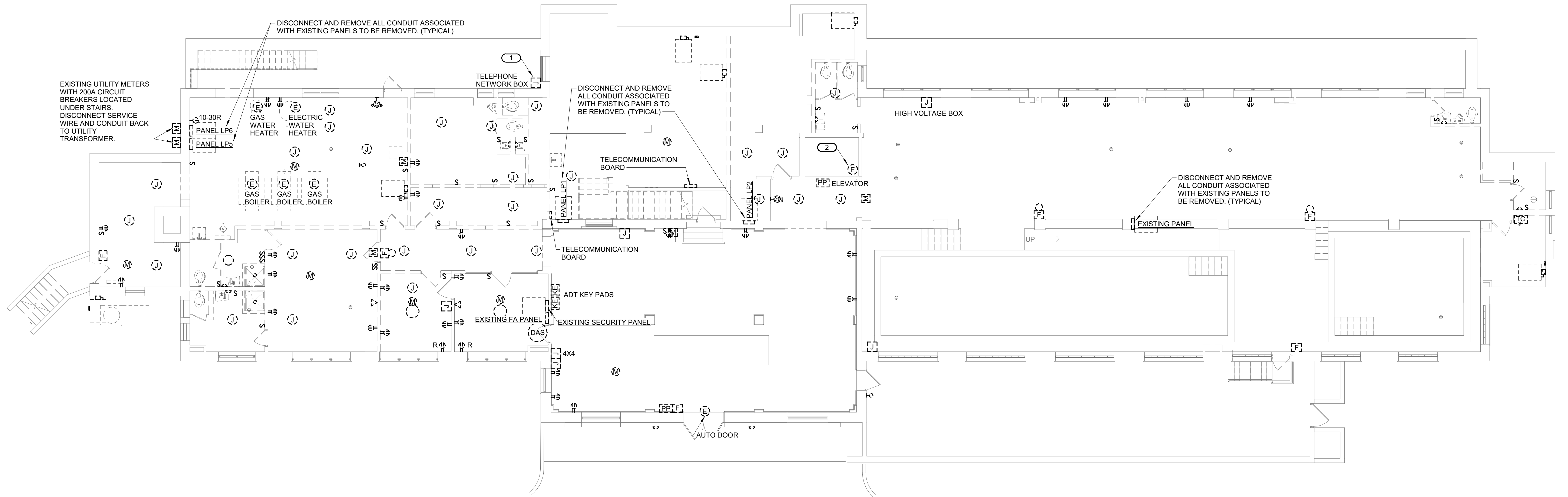


- SHEET NOTES:**
1. REFER TO SHEET E0.0 AND E0.1 FOR GENERAL NOTES AND SYMBOLS.
 2. DEMOLITION SHALL BE VERY CAREFULLY COORDINATED WITH EXISTING CONDITIONS, PRESERVATION ZONES, AND HISTORIC NATURE OF BUILDING AND SHALL CONFORM WITH THE NATIONAL PARKS REQUIREMENTS AND GUIDELINES.
 3. DISCONNECT AND REMOVE POWER, LIGHTING AND FIRE ALARM DEVICES AND LIGHTING FIXTURES SHOWN AS DEMOLISHED AND ALL ASSOCIATED WIRE AND CONDUIT, JUNCTION BOXES AND CABLES. ALL EXISTING CONDUIT TO BE REMOVED IS NOT SHOWN ON PLANS.
 4. HAZARDOUS MATERIALS ARE PRESENT IN/ON SELECT EXISTING MATERIALS - REFER TO HAZARDOUS MATERIAL REPORT FOR LOCATIONS. REFER TO SPECIFICATIONS FOR ABATEMENT, REMOVAL AND DISPOSAL.

- KEYNOTES: #**
1. COORDINATE REMOVAL OF EXISTING FIBER EQUIPMENT WITH AT&T. AT&T WILL REMOVE THEIR EQUIPMENT PRIOR TO DEMOLITION.
 2. EXISTING ELEVATOR CONNECTION AND ALL EXISTING ELEVATOR EQUIPMENT SHALL BE DISCONNECTED AND REMOVED.



1
EX1.1 LOWER LEVEL DEMOLITION PLAN - ELECTRICAL
1/8" = 1'-0"
8' 0' 8' 16'
1/8" = 1'-0" SCALE OF FEET



A/E FIRMS ARCH: QUINN EVANS 219 1/2 N. MAIN STREET ANN ARBOR, MI T: 734.663.5888 MEP/ENG: IMEG CORP. 1400 BALTIMORE STREET, SUITE 300 KANSAS CITY, MO T: 816.842.8437	DESIGNED: ZMB	SUB SHEET NO. 02 EX1.1	TITLE OF SHEET LIBBEY BATHHOUSE LOWER LEVEL DEMOLITION PLAN - ELECTRICAL REHABILITATE BATHHOUSES HOT SPRINGS NATIONAL PARK	DRAWING NO. 128 182951
	CADD: WMM			PMIS/PKG NO. 318915
TECH. REVIEW: PIP	DATE: 10.27.2023			SHEET 240 OF 286

10/27/2023 11:50:32 AM